



Ohio Department of Rehabilitation and Correction

John R. Kasich, Governor

www.drc.ohio.gov

Gary C. Mohr, Director

TO: ALL CONCERNED

FROM: SENARATH DASSANAYAKA, SENIOR RESEARCHER
BUREAU OF RESEARCH AND EVALUATION
OFFICE OF POLICY

DATE: 9/12/2016

SUBJECT: CALENDAR YEAR 2016 SUMMARY OF INSTITUTION STATISTICS

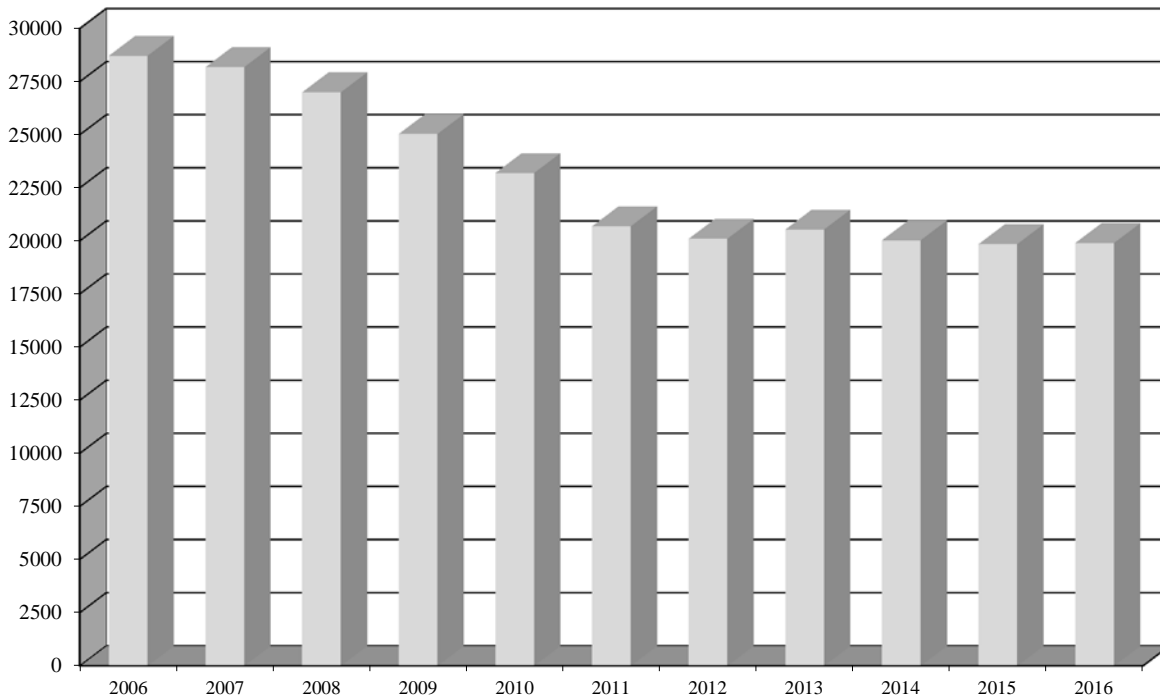
TOTAL COURT COMMITMENTS TO THE OHIO DEPARTMENT OF REHABILITATION AND CORRECTION:

OFFICIAL COMMITMENT TOTALS	2016	Percent		2016	Percent
CRC RECEPTION - MALE	9,822	49.37%	MALE INTAKE	16,863	84.76%
LORCI RECEPTION - MALE	7,041	35.39%	FEMALE INTAKE	3,032	15.24%
ORW RECEPTION - FEMALE	3,032	15.24%	TOTAL	19,895	100.00%
TOTAL	19,895	100.00%			

COURT COMMITMENTS TO THE DEPARTMENT CY 2004-2016

Year	2006	2007	2008	2009	2010	2011	2012	2013	2014	2015	2016
Total commitments	28714	28178	26993	25031	23191	20682	20094	20528	20023	19844	19895
% Diff. from Prev. year	11.1%	-1.9%	-4.2%	-7.3%	-7.4%	-10.8%	-2.8%	2.2%	-2.5%	-0.9%	0.3%

FIGURE 1. COURT COMMITMENTS TO THE DEPARTMENT CY 2006- 2016



NUMBER OF COMMITMENTS TO THE DEPARTMENT**								
CY 2016*	CRC	LORCI	MALE	MALE	ORW	FEMALE	TOTAL	TOTAL
	MALE	MALE	N	%	FEMALE	%	N	%
1ST COMMITMENT	4,797	3,332	8,129	48.21%	2,217	73.12%	10,346	52.00%
2ND COMMITMENT	2,142	1,518	3,660	21.70%	507	16.72%	4,167	20.94%
3 OR MORE COMMITMENTS	2,883	2,191	5,074	30.09%	308	10.16%	5,382	27.05%
TOTAL	9,822	7,041	16,863	100.00%	3,032	100.00%	19,895	100.00%

NUMBER OF COMMITMENTS TO THE DEPARTMENT**								
CY 2015*	CRC	LORCI	MALE	MALE	ORW	FEMALE	TOTAL	TOTAL
	MALE	MALE	N	%	FEMALE	%	N	%
1ST COMMITMENT	4,749	3,297	8,046	47.75%	2,161	72.23%	10,207	51.44%
2nd COMMITMENT	2,193	1,597	3,790	22.49%	520	17.38%	4,310	21.72%
3rd COMMITMENT	2,774	2,242	5,016	29.77%	311	10.39%	5,327	26.84%
TOTAL	9,716	7,136	16,852	100.00%	2,992	100.00%	19,844	100.00%

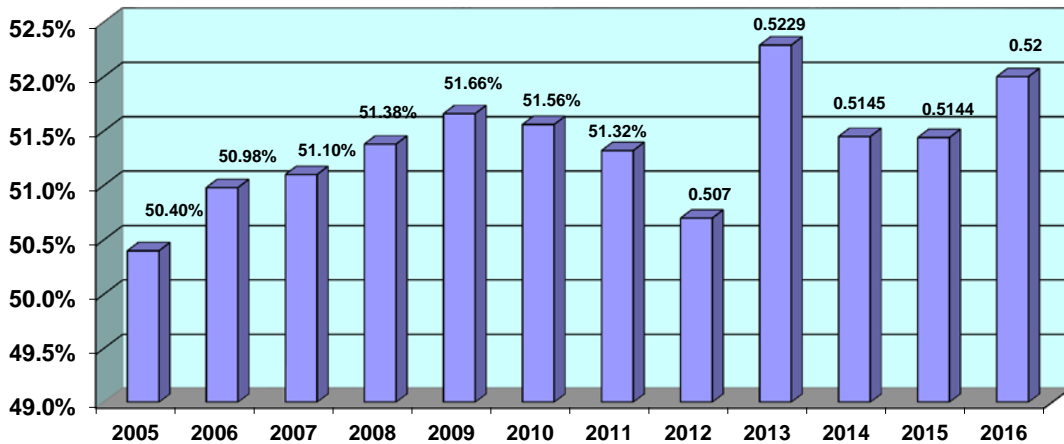
NUMBER OF COMMITMENTS TO THE DEPARTMENT**								
CY 2014*	CRC	LORCI	MALE	MALE	ORW	FEMALE	TOTAL	TOTAL
	MALE	MALE	N	%	FEMALE	%	N	%
1ST COMMITMENT	5,089	3,176	8,265	48.08%	2,037	71.88%	10,302	51.45%
2ND COMMITMENT	2,240	1,565	3,805	22.14%	475	16.76%	4,280	21.38%
3 OR MORE COMMITMENTS	2,882	2,237	5,119	29.78%	322	11.36%	5,441	27.17%
TOTAL	10,211	6,978	17,189	100.00%	2,834	100.00%	20,023	100.00%

* THIS TABLE IS PRODUCED FROM A DOTS SUMMARY OF PRIOR OHIO COMMITMENTS.

FIGURE 2. DISTRIBUTION OF COURT COMMITMENTS CY 2016

3 OR MORE COMMITMENTS, 27.05%

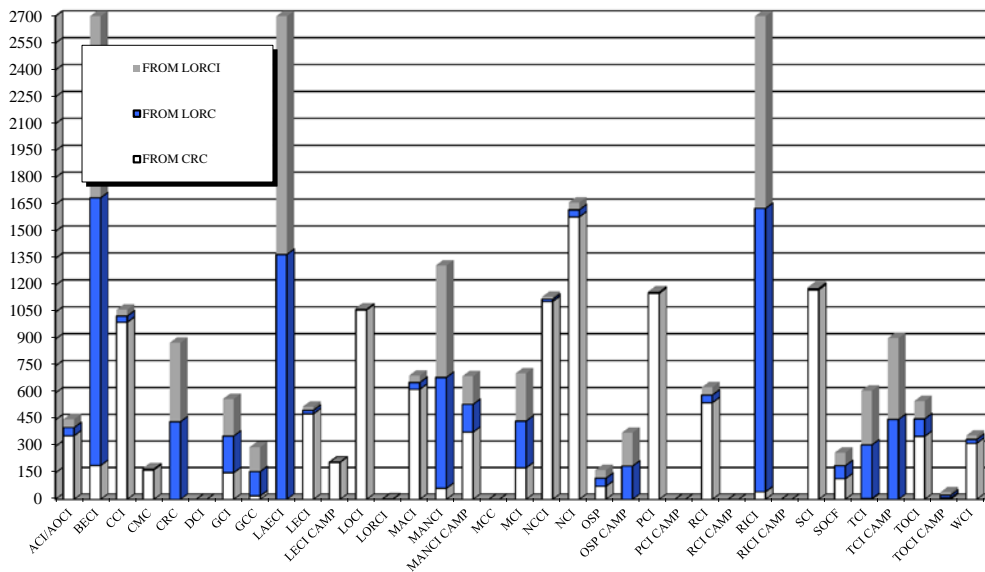
FIGURE 3. PERCENT OF INMATES SERVING A FIRST COMMITMENT CY 2005-2016



INMATE TRANSFERS FROM MALE RECEPTION CENTERS:

INS.	FROM CRC RECEPTION TO:				FROM LORCI RECEPTION TO:			
	2016	2015	2014	2013	2016	2015	2014	2013
ACI/AOCI	360	192	157	47	47	31	36	41
BECI	192	88	580	490	1496	1,506	891	1232
CCI	994	736	760	771	35	3	4	2
CMC	167	108	42	5	5	65	1	1
CRC	0	0	0	0	440	377	448	306
DCI	0	12	0	8	0	2	0	0
GCI	151	182	117	143	208	170	52	171
GCC	20	0	0	29	138	24	90	51
HCF	0	0	0	90	0	0	0	0
LAECI	0	0	0	0	1372	1,302	742	1447
LECI	484	832	583	595	20	37	12	57
LECI CAMP	210	174	58	78	0	0	8	0
LOCI	1063	795	785	851	4	5	22	24
LORCI	2	2	3	5	0	0	0	0
MACI	621	1,213	1464	1227	38	3	20	194
MANCI	63	67	14	13	624	577	552	423
MANCI CAMP	381	1	34	99	156	449	405	389
MCC	0	0	0	0	0	57	0	0
MCI	179	79	91	7	265	677	677	827
NCCI	1110	1,598	1584	1686	13	42	8	6
NCI	1581	2,241	2363	2244	40	4	4	19
OSP	74	1	3	2	46	21	3	9
OSP CAMP	0	0	0	0	189	0	1	0
PCI	1155	1,035	1241	1319	6	25	36	35
PCI CAMP	0	113	0	0	0	2	3	1
RCI	546	338	534	521	43	61	18	45
RCI CAMP	0	21	0	0	0	0	0	0
RICI	43	14	54	0	1586	1,574	1504	1663
RICI CAMP	0	2	0	0	0	0	0	4
SCI	1175	1,187	961	964	8	25	31	47
SOCF	117	78	81	36	74	38	37	20
TCI	5	14	11	4	304	381	269	337
TCI CAMP	0	5	0	0	453	401	432	357
TOCI	357	44	73	4	99	18	5	75
TOCI CAMP	8	0	0	0	16	0	0	40
WCI	318	402	414	261	22	11	4	13
TOTAL	11376	11,574	12007	11499	7747	7,888	7030	7836

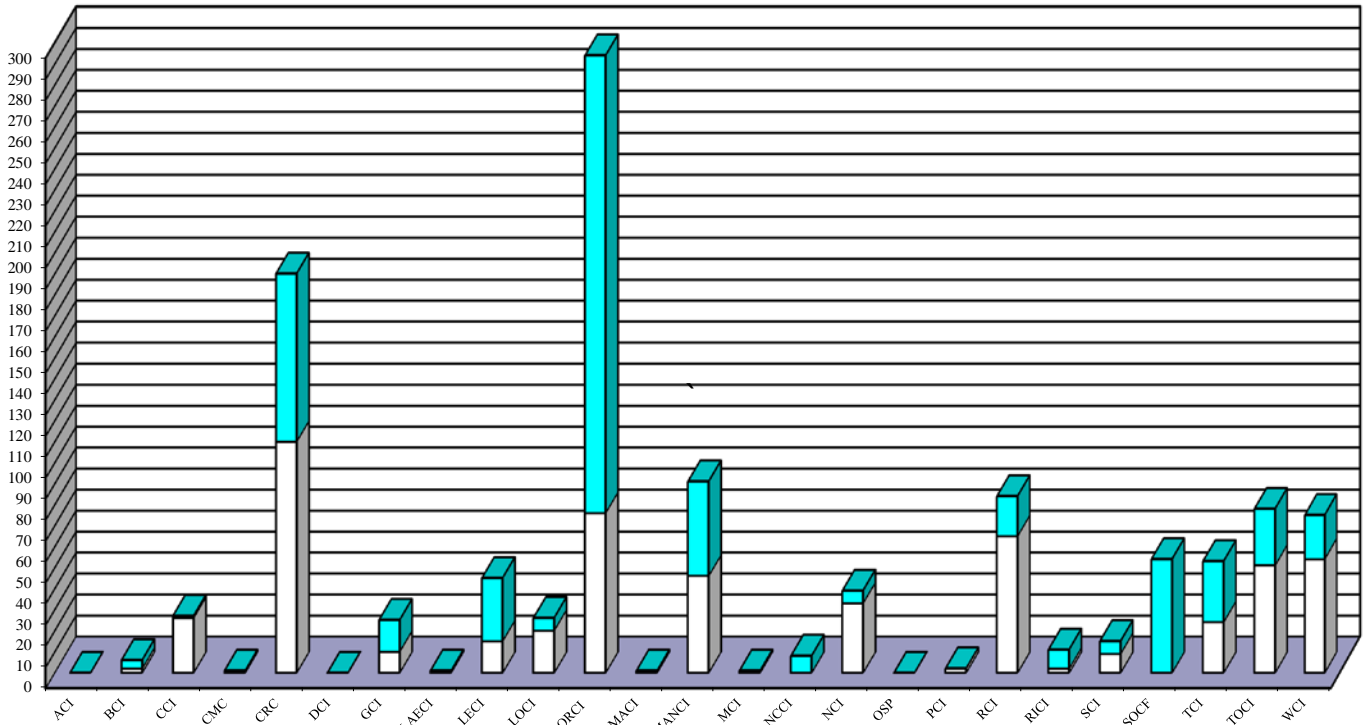
FIGURE 4. INMATES RECEIVED FROM CRC AND LORCI CY 2016



DISCIPLINARY AND ADMINISTRATIVE TRANSFERS:

	FROM LESSER CUSTODY TO:				FROM HIGHER TO LESSER CUSTODY			
	LEVEL 5		LEVEL 4		LEVEL 5		LEVEL 4	
	(OSP)		(SOCF)		(OSP)		(SOCF)	
	2016	2015	2016	2015	2016	2015	2016	2015
ACI/AOCI	0	2	0	3	0	0	0	0
BECI	4	1	2	0	10	2	0	0
CCI	1	0	26	2	2	0	0	0
CMC	0	0	1	0	0	0	1	0
CRC	80	1	110	3	9	4	7	38
DCI	0	0	0	0	0	0	0	0
GCI	15	0	10	0	5	0	1	0
LaECI	0	1	1	1	1	1	0	0
LECI	30	18	15	22	5	1	36	79
LOCI	6	9	20	4	0	0	0	0
LORCI	218	11	76	46	3	0	1	0
MACI	0	0	1	3	1	0	19	1
MANCI	45	46	46	42	18	6	37	61
MCI	0	0	1	3	1	0	0	0
NCCI	8	1	0	6	0	0	0	0
NCI	6	6	33	5	0	7	0	7
OSP	0	0	0	0	0	0	0	0
PCI	0	0	2	3	0	0	0	0
RCI	19	25	65	66	4	3	62	56
RICI	9	16	2	5	2	4	0	1
SCI	6	4	9	1	1	1	1	0
SOCF	54	44	0	0	67	151	0	0
TCI	29	29	24	38	4	0	13	23
TOCI	27	28	51	53	9	71	48	74
WCI	21	25	54	61	4	11	36	40
TOTAL	578	267	549	367	146	262	262	380

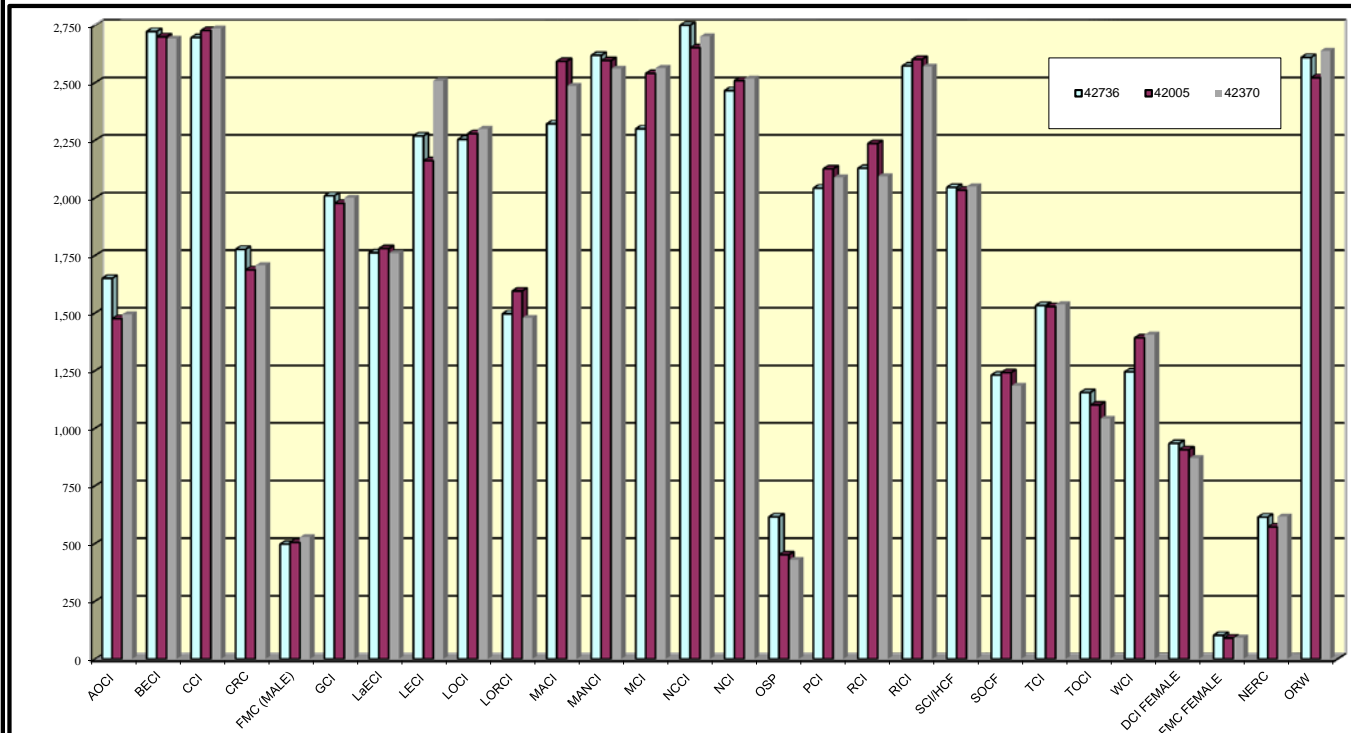
FIGURE 5. TRANSFERS TO LEVEL 5 AND LEVEL 4 CUSTODY IN CY 2016 (SORTED BY SENDING PRISON)



**END OF CALENDAR YEAR INSTITUTIONAL POPULATION COUNT:
INSTITUTION POPULATION TREND (PREVIOUS YEAR COMPARISON)**

MALE INSTITUTIONS		1/1/2017	1/1/2016	DIFFERENCE	
ACI/AOCI	(Allen Oakwood Correctional Institution)	1,651	1494	157	10.5%
BECI	(Belmont Correctional Institution)	2,723	2691	32	1.2%
CCI	(Chillicothe Correctional Institution)	2,696	2735	-39	-1.4%
CRC	(Correctional Reception Center)	1,777	1707	70	4.1%
FMC (MALE)	(Franklin Medical Center)	497	528	-31	-5.9%
GCI	(Grafton Correctional Institution)	2,010	2001	9	0.4%
LaECI	(Lake Erie Correctional Institution)	1,762	1760	2	0.1%
LECI	(Lebanon Correctional Institution)	2,269	2509	-240	-9.6%
LOCI	(London Correctional Institution)	2,254	2299	-45	-2.0%
LORCI	(Lorain Correctional Institution)	1,497	1479	18	1.2%
MACI	(Madison Correctional Institution)	2,322	2486	-164	-6.6%
MANCI	(Mansfield Correctional Institution)	2,619	2561	58	2.3%
MCI	(Marion Correctional Institution)	2,300	2564	-264	-10.3%
NCCI	(North Central Correctional Institution)	2,881	2701	180	6.7%
NCI	(Noble Correctional Institution)	2,466	2518	-52	-2.1%
OSP	(Ohio State Penitentiary)	616	429	187	43.6%
PCI	(Pickaway Correctional Institution)	2,043	2088	-45	-2.2%
RCI	(Ross Correctional Institution)	2,128	2094	34	1.6%
RICI	(Richland Correctional Institution)	2,573	2570	3	0.1%
SCI/HCF	(Southeastern Correctional Institution)	2,046	2050	-4	-0.2%
SOCF	(Southern Ohio Correctional Facility)	1,231	1184	47	4.0%
TCI	(Trumbull Correctional Institution)	1,533	1538	-5	-0.3%
TOCI	(Toledo Correctional Institution)	1,155	1041	114	11.0%
WCI	(Warren Correctional Institution)	1,245	1406	-161	-11.5%
MALE TOTAL		46,294	46433	-139	-0.3%
FEMALE INSTITUTIONS					
FMC FEMAL	(Franklin Medical Center)	103	92	11	12.0%
DCI	(Dayton Correctional Institution)	934	870	64	7.4%
NERC	(Northeast Reintegration Center)	615	617	-2	-0.3%
ORW	(Ohio Reformatory for Women)	2,610	2639	-29	-1.1%
FEMALE TOTAL		4,262	4218	44	1.0%
COMBINED MALE / FEMALE TOTAL		50,556	50651	-95	-0.2%

**FIGURE 6.
COMPARISON OF INSTITUTION POPULATION COUNT ON 1/1/17 and 1/1/16**



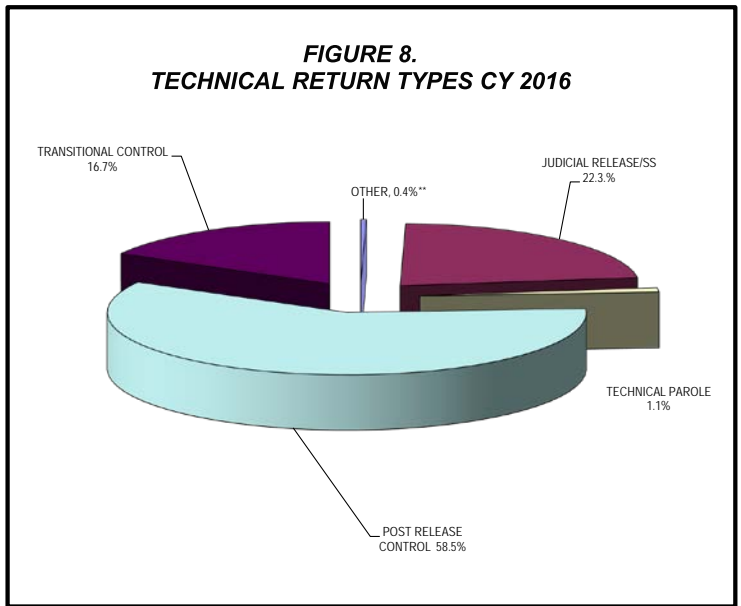
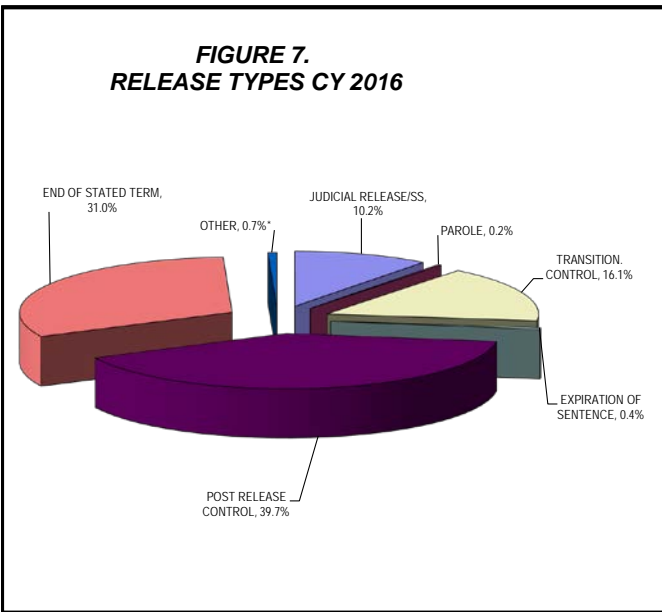
RELEASES AND RETURNS:

INSTITUTIONAL STATISTICS

	CY 2016			CY 2015	CY 2014	CY 2013	CY 2012
	Female	Male	TOTAL	TOTAL	TOTAL	TOTAL	TOTAL
RELEASED BY:							
SUSPENDED SENTENCE	9	20	29	15	5	12	1
VACATED SENTENCE	0	1	1	3	0	0	9
REGULAR PAROLE	0	56	56	53	49	60	144
SHOCK PAROLE	0	0	0	0	0	0	0
JUDICIAL RELEASE	574	1818	2392	2438	2337	2,250	2,418
POST RELEASE CONTROL	600	8872	9472	8508	8640	8,529	8,241
TRANSITIONAL CONTROL	724	3118	3842	4080	3441	2,894	3,037
EXPIRATION OF SENTENCE	2	88	90	76	60	38	219
END OF STATED TERM	1337	6066	7403	7706	8125	7,598	8,041
APPEALS BOND	4	21	25	19	20	16	12
ESCAPES/WALKAWAYS (numbers provided by the Office of Prisons)	0	0	0	0	0	3	0
DEATHS (numbers provided by the Bureau of Medical Services)	2	131	133	135	108	124	130
TT RELEASED	134	269	403	0	0	0	0
TOTAL RELEASED	3386	20460	23846	23033	22,785	21,524	22,252
TECHNICAL RETURNED BY:							
PAROLE VIOLATION ¹	0	36	36	71	121	70	56
JUDICIAL RELEASE VIOLATION	162	561	723	699	681	738	617
POST RELEASE CONTROL VIOLATION ¹	86	1810	1896	1869	1319	959	750
TRANSITIONAL CONTROL VIOLATION	102	440	542	422	356	337	367
REACTIVATED SUSPENDED SENTENCE	0	0	0	0	3	2	1
ESCAPES RETURNED	0	1	1	0	3*	3	11
APPEALS BOND	2	9	11	10	17	13	11
TT RETURNED	16	19	35	0	0	0	0
TOTAL RETURNED	368	2,876	3,244	3071	2500	2,122	1,813
<i>1. Numbers taken from DOTS. PRC and Parole offenders being held at reception prior to a violation hearing have caused errors in the monthly report totals, so they are not summed for this report.</i>							
<i>*This number is corrected from previous record</i>							
PAROLE VIOLATORS RECOMMISSIONED ^{2,3}	0	5	5	9	15	30	60
PRC FELONY VIOLATOR ^{2,3}	52	1,840	1892	1,628	1707	1,413	1,095

2. PVR and PRC Felony Violator numbers from DOTS. PRC Felony Violator counts are being determined in an improved way for CY 2008 and after.

3. These totals are counted as part of "commitments from court" reported on page 1



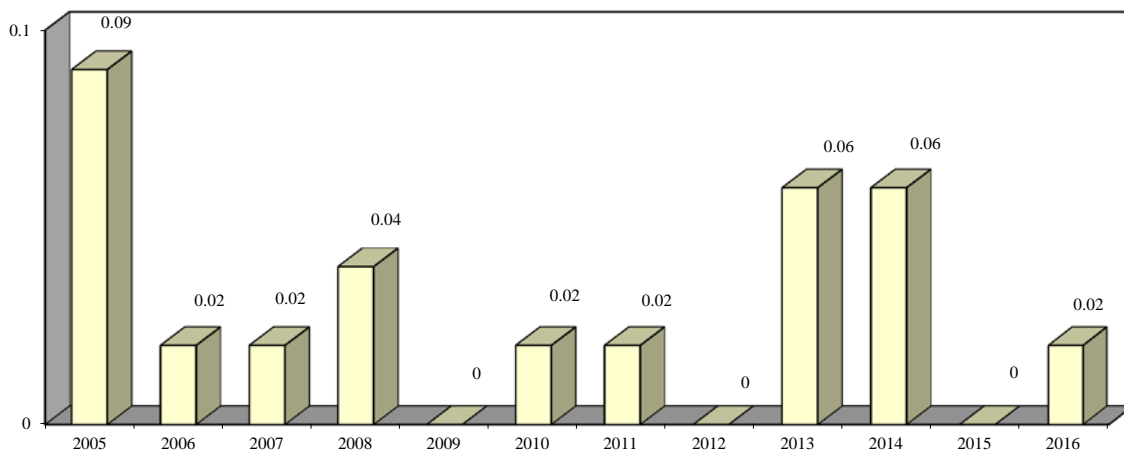
*Other includes the following releases: vacated sentences, appeals bond, escapes and deaths.

**Other includes returns for the following:
Return from appeals bond
and captured escapees.

ESCAPES/WALKAWAYS AND RATES OF ESCAPES/WALKAWAYS												
	2005	2006	2007	2008	2009	2010	2011	2012	2013	2014	2015	2016
ACI	0	0	0	0	0	0	0	0	0	3	0	0
BECI	0	0	0	0	0	0	0	0	0	0	0	0
CCI	0	0	0	0	0	0	0	0	0	0	0	0
CMC	0	0	0	0	0	0	0	0	1	0	0	0
CRC	0	0	0	0	0	0	0	0	0	0	0	0
DCI	1	0	0	0	0	0	0	0	0	0	0	0
FPRC	0	0	0	0	0	0	0	0	0	0	0	0
GCI	0	0	0	0	0	0	0	0	0	0	0	0
HCI	0	0	0	0	0	0	0	0	0	0	0	0
LAECI	0	0	0	0	0	0	0	0	0	0	0	0
LCI	0	0	0	0	0	0	0	0	0	0	0	0
LECI	0	1	0	0	0	0	0	0	0	0	0	0
LOCI	0	0	0	0	0	0	0	0	1	0	0	0
LORCI	0	0	0	1	0	0	0	0	0	0	0	0
MACI	0	0	0	0	0	0	0	0	0	0	0	0
MANCI	0	0	0	0	0	0	1	0	1	0	0	0
MCI	0	0	0	0	0	0	0	0	0	0	0	0
MEPRC	0	0	0	0	0	0	0	0	0	0	0	0
NEPRC	0	0	0	0	0	0	0	0	0	0	0	0
NCCI	0	0	0	0	0	0	0	0	0	0	0	0
NCCTF	0	0	0	0	0	0	0	0	0	0	0	0
NCI	0	0	0	0	0	0	0	0	0	0	0	0
OAKCI	0	0	0	0	0	0	0	0	0	0	0	0
ORW	0	0	0	0	0	0	0	0	0	0	0	0
OSP	1	0	0	0	0	0	0	0	0	0	0	0
PCI	2	0	0	0	0	0	0	0	0	0	0	0
RCI	0	0	0	1	0	0	0	0	0	0	0	0
RICI	0	0	0	0	0	0	0	0	0	0	0	0
SCI	0	0	1	0	0	0	0	0	0	0	0	1
SOCF	0	0	0	0	0	1	0	0	0	0	0	0
TCI	0	0	0	0	0	0	0	0	0	0	0	0
TOCI	0	0	0	0	0	0	0	0	0	0	0	0
WCI	0	0	0	0	0	0	0	0	0	0	0	0
TOTAL	4	1	1	2	0	1	1	0	3	3	0	1

AVG. SYSTEM POPULATION												
FOR YEAR	2005	2006	2007	2008	2009	2010	2011	2012	2013	2014	2015	2016
	44142	46861	49345	50381	50969	51020	50504	49817	50293	50584	50396	50764
RATE OF ESCAPES/WALKAWAYS PER 1000 INMATE												
	0.09	0.02	0.02	0.04	0.00	0.02	0.02	0.00	0.06	0.06	0.00	0.02

FIGURE 9. RATES OF ESCAPES/WALKAWAYS - CY 2005-2016

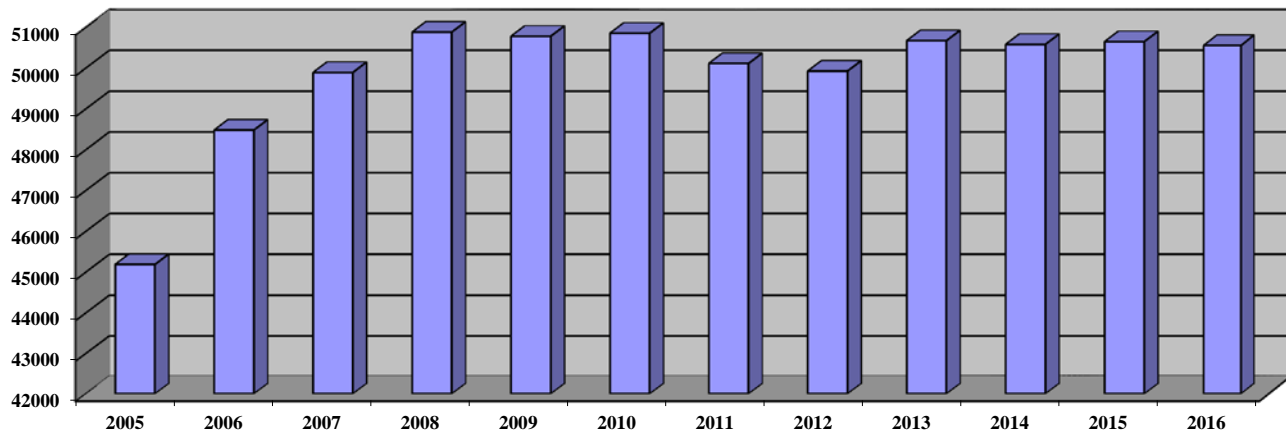


INSTITUTION POPULATION TRENDS:

END OF THE YEAR INSTITUTIONAL POPULATION TREND FOR 12/31/05 THROUGH 12/31/16

	2005	2006	2007	2008	2009	2010	2011	2012	2013	2014	2015	2016
ACI/AOCI	1,323	1,331	1,329	1,317	1,378	1331	1533	1566	1620	1476	1,494	1651
BECI	2,495	2,636	2,707	2,718	2,703	2689	2698	2697	2741	2700	2,691	2723
CCI	2,720	2,890	2,824	2,904	2,908	2895	2622	2679	2828	2727	2,735	2696
CMC Male	111	113	126	128	129	120	44	394	434	505	528	497
CMC Femal	7	5	3	5	4	4	78	98	90	91	92	103
CRC	1,782	1,766	1,726	1,685	1,517	1586	1813	1833	1817	1688	1,707	1777
DCI Male	420	481	474	468	815	785	0	0	0	0	0	0
DCI Female	0	0	0	0	0	0	870	863	925	907	870	934
FPRC Male	478	488	479	452	480	477	474	0	0	0	0	0
GCI	1,417	1,412	1,509	1,501	1,518	1520	1305	1951	1997	1977	2,001	2010
HCI/HCF	461	462	484	486	482	475	479	443	0	0	0	0
LaECI	1,474	1,474	1,481	1,484	1,503	1499	1500	1789	1769	1780	1,760	1762
LCI	0	0	0	0	0	0	0	0	0	0	0	0
LECI	2,117	2,251	2,498	2,653	2,761	2768	2742	2578	2586	2161	2,509	2269
LOCI	2,079	2,218	2,108	2,530	2,516	2507	2282	2251	2290	2279	2,299	2254
LORCI	1,655	1,624	1,896	1,881	1,682	1679	1338	1591	1302	1596	1,479	1497
MACI	2,009	2,076	2,314	2,195	2,307	2312	2302	2342	2327	2593	2,486	2322
MANCI	2,207	2,295	2,382	2,460	2,519	2492	2482	2493	2516	2596	2,561	2619
MCI	1,727	2,061	2,161	2,210	2,290	2293	2632	2571	2580	2540	2,564	2300
MEPRC	338	341	332	323	0	0	0	0	0	0	0	0
NCCI	2,294	2,291	2,321	2,311	2,321	2332	2199	2610	2681	2652	2,701	2881
NCCTF	601	606	657	649	692	687	657	0	0	0	0	0
NCI	2,307	2,308	2,337	2,480	2,462	2408	2510	2500	2560	2509	2,518	2466
NEPRC	562	577	566	546	579	496	539	546	442	572	617	615
OAKCI Fem	109	132	117	127	171	130	0	0	0	0	0	0
OAKCI Mal	5	4	4	6	5	8	0	0	0	0	0	0
OCI	0	0	0	0	0	0	0	0	0	0	0	0
ORW Femal	1,845	2,228	2,298	2,477	2,521	2591	2325	2350	2565	2522	2,639	2610
OSP	560	519	517	541	520	562	644	466	457	451	429	616
PCI	1,995	2,345	2,342	2,419	2,048	2114	2176	2106	2195	2126	2,088	2043
RCI	2,217	2,516	2,530	2,586	2,547	2583	2261	2049	2044	2236	2,094	2128
RICI	2,307	2,464	2,531	2,522	2,533	2528	2568	2521	2546	2602	2,570	2573
SCI	1,437	1,512	1,515	1,628	1,537	1553	1590	1583	2062	2034	2,050	2046
SOCF	1,087	1,327	1,487	1,388	1,415	1470	1400	1352	1233	1242	1,184	1231
TCI Male	941	971	957	952	1,047	1060	1063	1064	1520	1528	1,538	1533
TCI Female	293	345	374	361	319	312	0	0	0	0	0	0
TOCI	750	1,083	1,113	1,093	1,148	1200	1575	1237	1143	1101	1,041	1155
WCI	1059	1330	1395	1398	1406	1391	1413	1405	1404	1392	1,406	1245
TOTAL	45189	48482	49894	50884	50783	50857	50114	49928	50674	50583	50,651	50556

FIGURE 10. INSTITUTION POPULATION TREND 12/31/2005- 12/31/2016



END OF THE YEAR INSTITUTIONAL POPULATION TREND FOR 12/31/95 THROUGH 12/31/2004

	1995	1996	1997	1998	1999	2000	2001	2002	2003	2004
ACI/AOCI	1415	1336	1381	1397	1406	1175	1122	1067	1239	1,301
BECI	1891	2,283	2,433	2,533	2427	1981	2017	2051	2094	2,160
CCI	2621	2,580	2,714	2,731	2,244	2192	2187	2315	2633	2,695
CMC Male	154	149	150	140	151	101	99	106	108	116
CMC Female	4	6	4	4	2	2	4	6	4	7
CRC	2074	1,971	2,267	1,982	1,840	1777	1513	1900	1521	1,649
DCI	484	485	489	467	460	445	456	468	415	418
EDP	0	0	0	0	0	0	0	0	0	0
FPRC	500	489	475	453	407	394	436	479	473	472
GCI	1590	1,622	1,658	1,587	1,601	1358	1354	1343	1369	1,416
HCF	436	432	446	441	438	396	400	418	455	465
LaECI	0	0	0	0	0	1369	1382	1387	1369	1,382
LCI	2110	2,082	2,009	1,907	1,530	1500	1467	1543	458	0
LECI	2198	2,105	2,273	2,221	1,976	1778	1666	1706	1912	1,938
LOCI	2366	1,896	1,877	1,901	1,885	1947	2057	2033	2048	2,078
LORCI	1863	2,003	2,062	2,053	1,606	1568	1467	1899	1521	1,454
MACI	2311	2,530	2,545	2,613	2,290	2060	1899	2083	2113	1,945
MANCI	2637	2,598	2,669	2,637	2,469	2286	2308	2297	2349	2,374
MCI	2093	2,109	21,111	2,206	1,918	1803	1763	1694	1659	1,846
MEPRC	349	324	347	340	306	305	292	318	337	339
NCCI	2274	2,216	2,316	2,314	2,258	1938	1916	1889	2213	2,281
NCCTF	0	0	0	0	0	549	542	540	532	547
NCI	0	1,452	2,377	2,344	1,854	1832	1763	2060	2086	2,095
NEPRC	645	633	643	592	546	569	606	625	623	531
OAKCI Fema	0	9	7	7	6	144	175	161	123	125
OAKCI Male	229	162	163	173	158	4	10	6	2	5
OCI	2245	2,139	2,039	2,000	1,917	1908	1636	0	0	0
ORW Female	1594	1,642	1,682	1,830	1,845	1774	1696	1767	1754	1,954
ORW Male	0	0	0	0	0	0	0	0	0	0
OSP	0	0	0	492	643	593	512	491	468	455
PCI	1923	1,919	1,920	1,940	1,883	1785	1834	2136	2149	2,084
RCI	2618	2,767	2,797	2,805	2,398	2289	2202	2248	2236	2,269
RICI	0	0	0	102	2,267	2073	2016	2258	2254	2,316
SCI/SOTC	1751	1,819	1,742	1,726	1,679	1368	1352	1383	1590	1,534
SOCF	1076	1304	1,425	1,425	1,456	1435	1449	1382	1047	959
TCI MALE	1375	1,424	1,446	1,447	1,409	1327	1408	1371	1380	964
TCI FEMALE	0	0	0	0	0	0	0	0	134	134
TOCI	0	0	0	0	0	222	718	779	791	792
WCI	1512	1476	1336	1361	1344	1258	1144	1075	1025	1042
TOTAL	44338	45962	47808	48171	46619	45505	44868	45284	44484	44142

FIGURE 11. INSTITUTION POPULATION TREND 12/31/1995-12/31/2004

