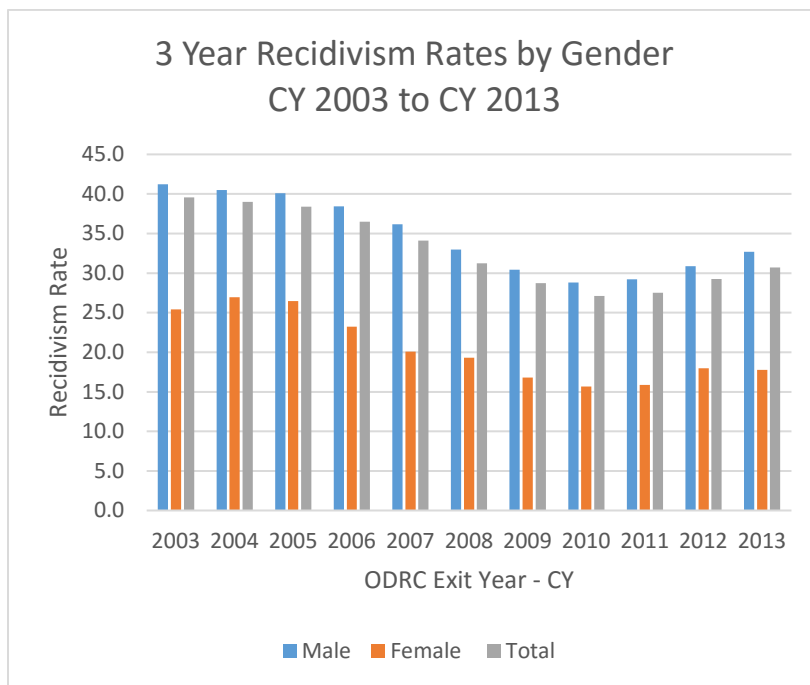


The overall 3-year recidivism rate for inmates released from Ohio prisons in 2013 is 30.73%, up nearly 1.5 percentage points from the 3-year rate for 2012 releases (29.26%). Table 1 shows the rate, by gender, for the years 2003-2013. The female rate declined about a quarter of a point (17.99% to 17.76%), while the increase among males was 1.85 points (30.86% to 32.71%), in contrast to increased rates reported for both groups in the 2012 release cohort. The overall rate exceeds 30% for the first time in five years.

Table 1.



Scope of Report

This report describes recidivism rates for all inmates released from an incarceration status in Ohio in CY 2013. This includes releases to post-release control (PRC), releases at the end of stated term (EST), judicial releases, expiration of indeterminate sentences, and discretionary releases onto parole. Rates are shown by gender, type of return, release type, age at release, major offense category, and the original county of commitment.

Measuring Recidivism

Recidivism, as used in this report, is defined as a return to incarceration in an Ohio prison for conviction of a new criminal offense or a technical violation of the conditions of post-release supervision. The recidivism *rate* refers to the percent of inmates released in a calendar year who are returned for either of these reasons within three years of the date of their release. Transitional Control releases are not tracked until the end date of their stated term, placement onto post-release control, or date of judicial release.

Table 2 shows the number of released inmates on which annual recidivism rates are calculated (for more detail, see section above). In CY 2013, the release cohort consisted of 21,022 inmates, 56.5% of whom were release to supervision. The percent placed on supervision post release has exceeded 50% since 2012 after dropping to a recent low point of just over 40% in 2010 (see Table 3).

Table 2.

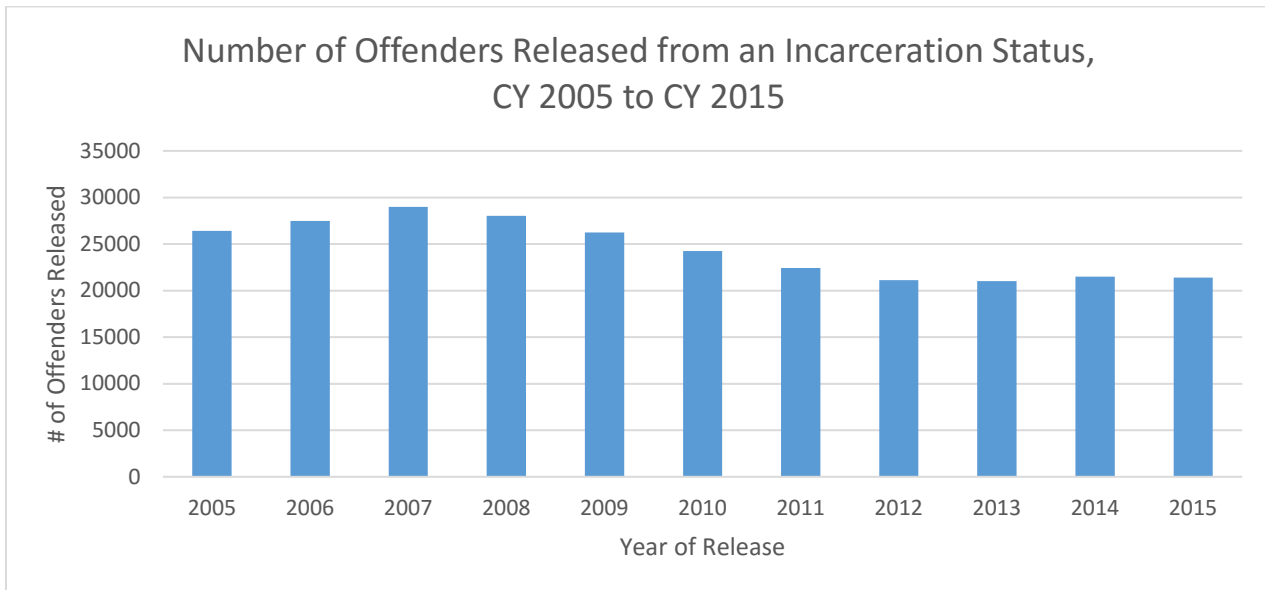


Table 3.



Table 4.

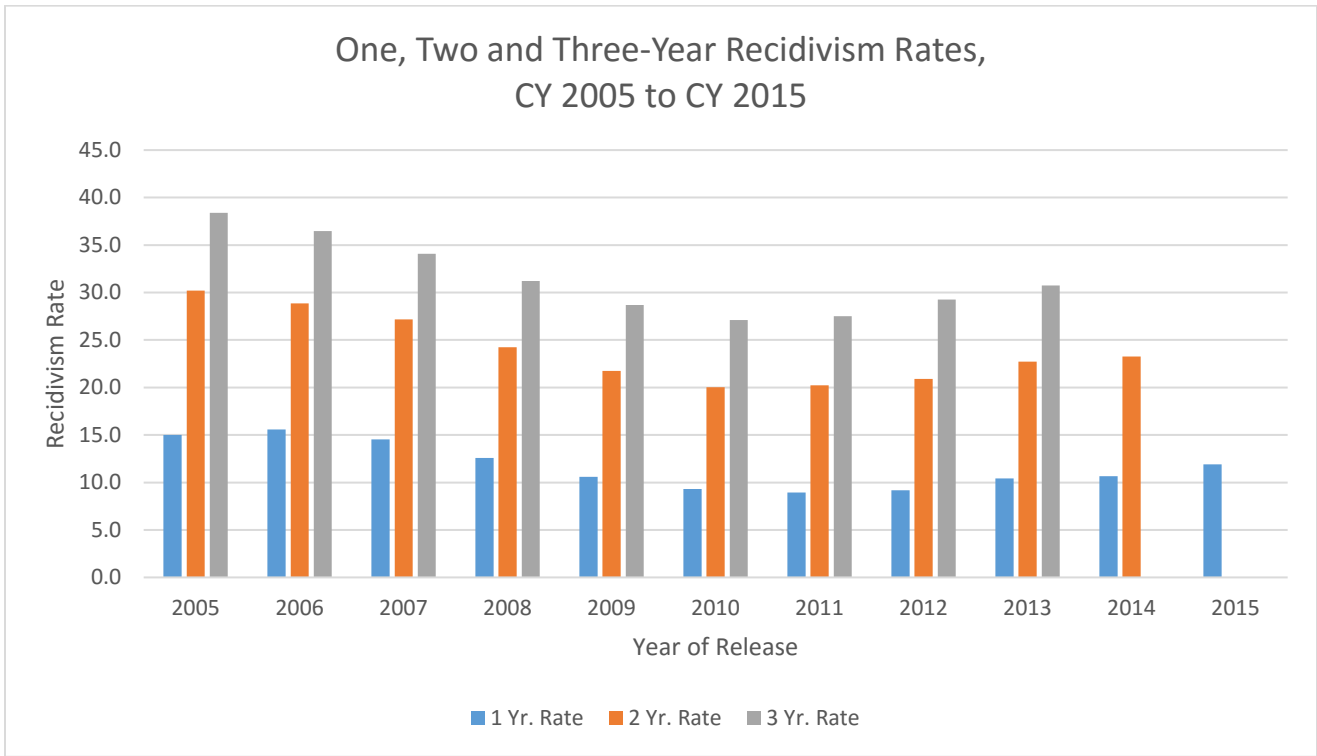
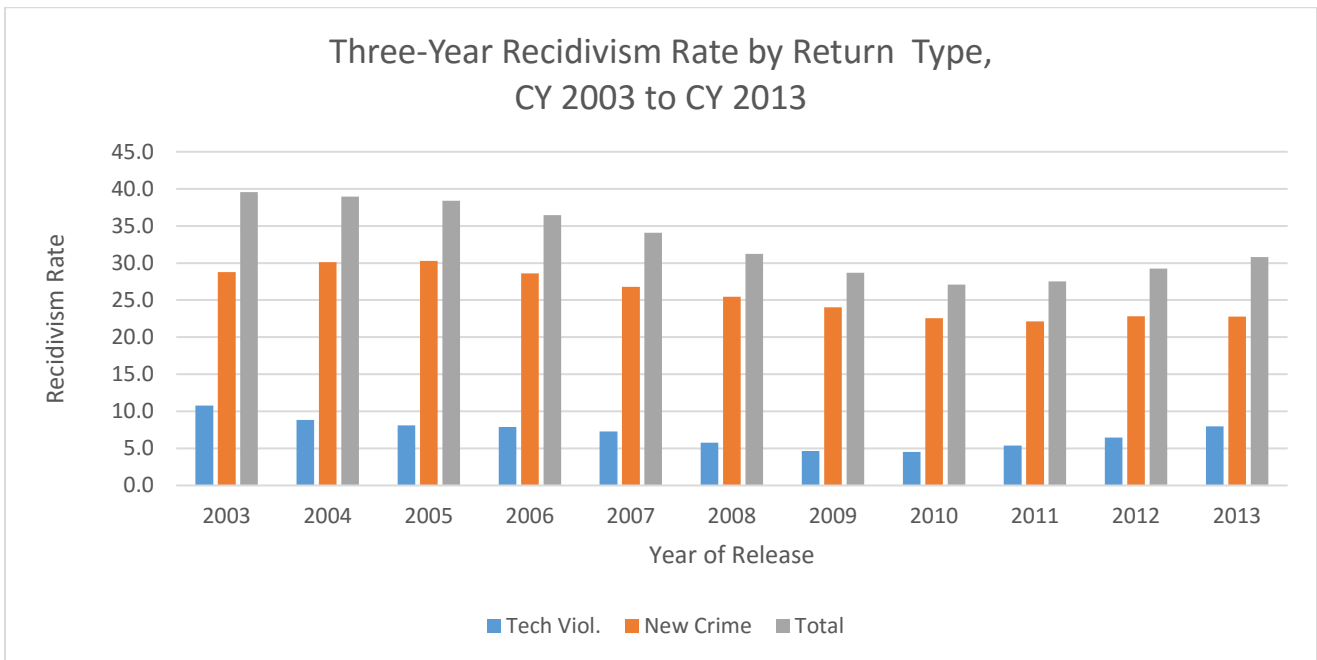


Table 5.



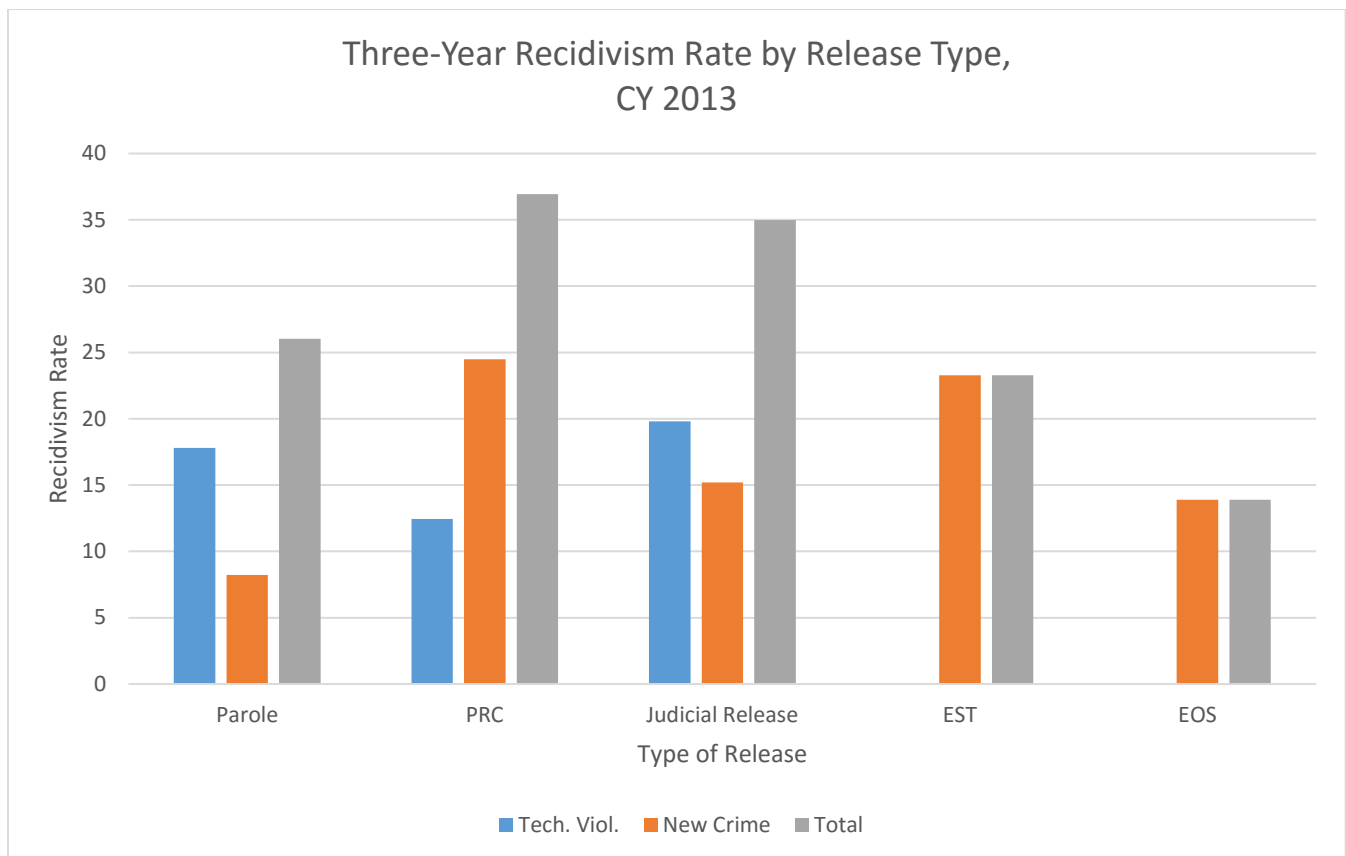
In Table 4, the recidivism rates are broken down by 1, 2, and 3-year follow-up periods for the 2005-2015 release cohorts. All three rates increased slightly in 2013, though the magnitude of the 1-year increase is slightly greater compared to 2012 releases.

Three-year recidivism rates for the 2003-2013 period, by type of return, are shown in Table 5. Returns for technical violations of supervision rules increased 1.5 percentage points in 2013, while the rate of return for new crimes remained unchanged, following an increase of less than one point in 2012. This is the fourth year in a row that the 3-year new crime recidivism rate has remained relatively stable in the historically low 22-23% range.

Table 6 shows the overall 3-year rate for 2013 broken down by type of release. Comparing the two main release types, the new crime rate among PRC releases was just over one point higher than the same rate among those released at end of stated term (EST) without supervision (24.49% compared to 23.29%). After an increase of nearly three percentage points in 2012, the 2013 rates reflect a small decline for PRC, but a small increase among releases at EST.

The bulk of the 1.5-point overall increase in 2013 is concentrated among PRC technical returns. This is contrast to the year before, when the increase was more widely distributed among PRC new crimes, technical returns, and judicial release returns. The 3-year PRC prison sanction rate increased nearly three percentage points and now exceeds 12% (Table 6), the highest rate reported in seven years.

Table 6.



In Tables 7, 8, and 9 the 2013 rates are shown by age, offense category, and county of commitment, respectively. Those under age 25 at the time of release had the highest rates of both technical and new-crime returns compared to any other age group (Table 7). Property offenders had recidivism rates approaching 35%, the highest among any of the major offense categories (Table 8).

Table 7.

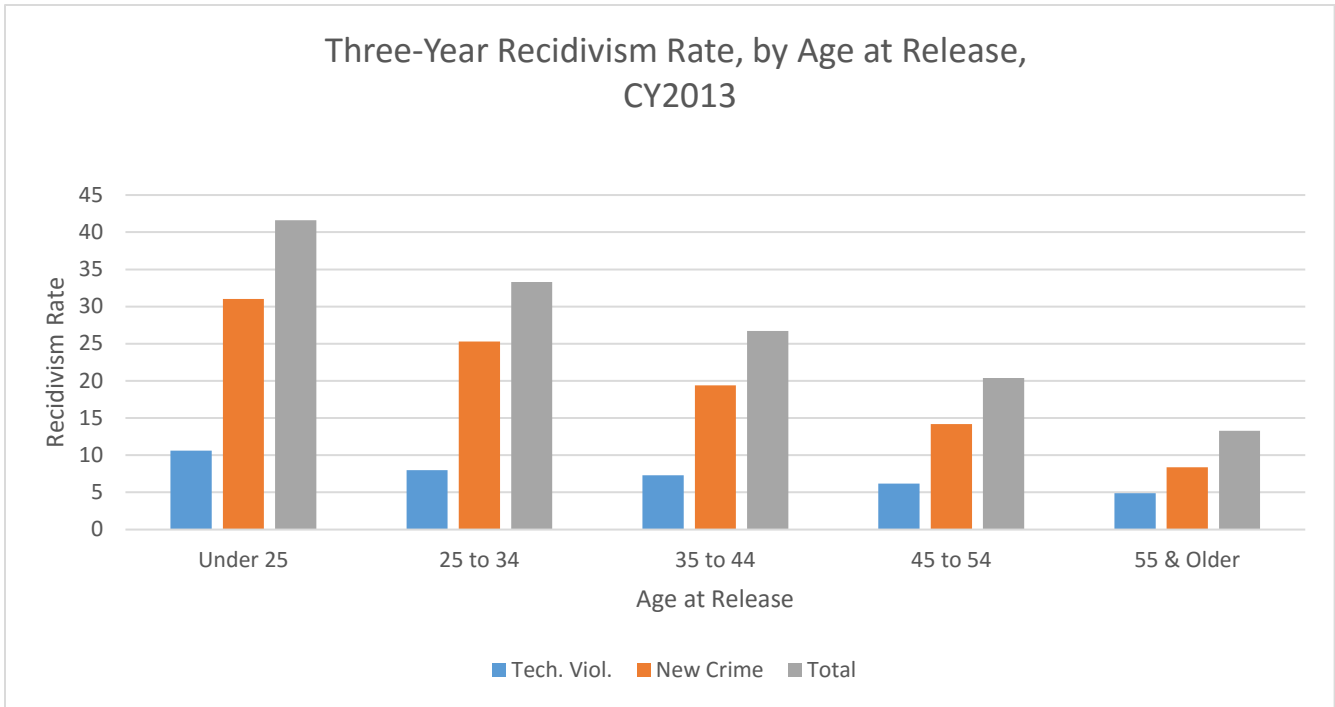


Table 8.

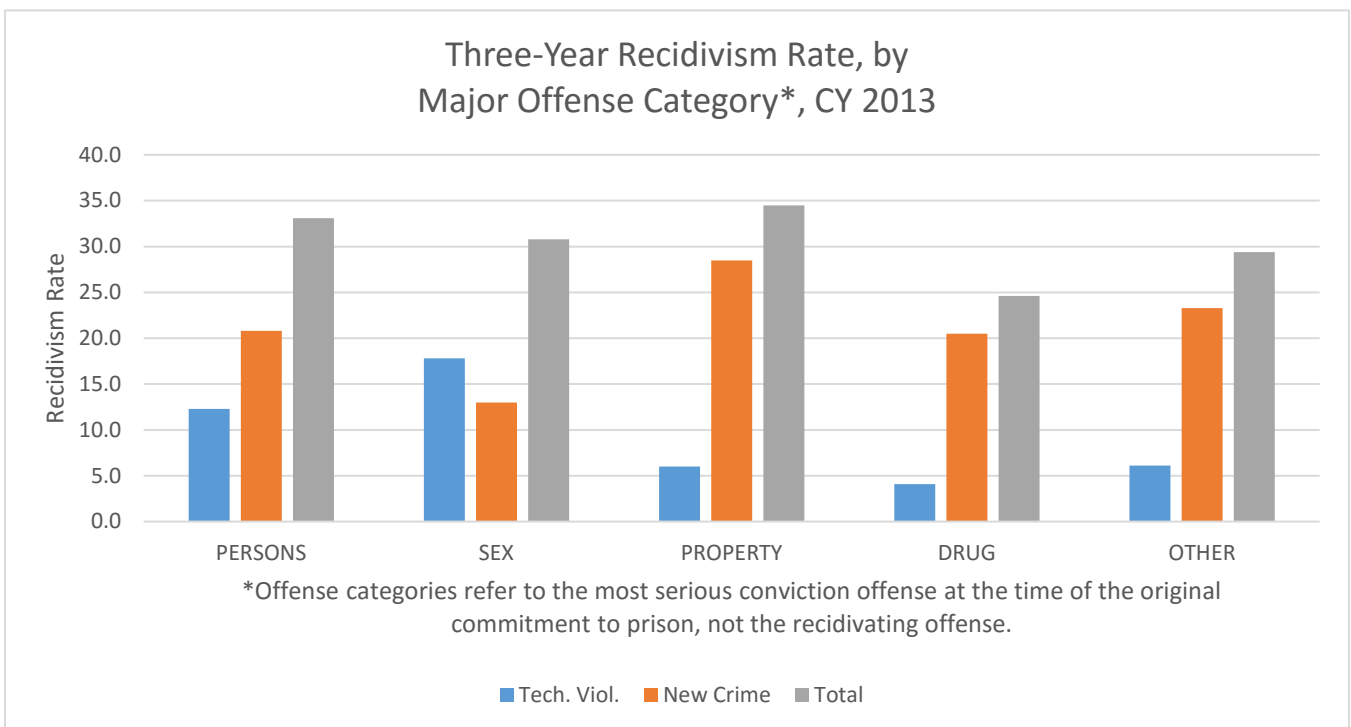


Table 9. County of Commitment	2013 DRC Exits – 3 Year Recidivism Rate						Total N	2013 Total Recidivism Rate	2012 Total Recidivism Rate	Percentage Points Change
	No Recidivism		Technical Violation		New Crime					
	N	%	N	%	N	%				
ADAMS	48	71.6%	5	7.5%	14	20.9%	67	28.36%	24.4%	4.0%
ALLEN	110	74.3%	12	8.1%	26	17.6%	148	25.68%	27.2%	-1.5%
ASHLAND	48	80.0%	1	1.7%	11	18.3%	60	20.00%	22.2%	-2.2%
ASHTABULA	60	66.7%	5	5.6%	25	27.8%	90	33.33%	24.5%	8.8%
ATHENS	74	66.7%	13	11.7%	24	21.6%	111	33.33%	37.0%	-3.7%
AUGLAIZE	68	78.2%	5	5.7%	14	16.1%	87	21.84%	25.3%	-3.5%
BELMONT	42	84.0%	3	6.0%	5	10.0%	50	16.00%	41.2%	-25.2%
BROWN	81	71.7%	7	6.2%	25	22.1%	113	28.32%	27.7%	0.6%
BUTLER	392	69.3%	40	7.1%	134	23.7%	566	30.74%	30.4%	0.3%
CARROLL	12	75.0%	0	0.0%	4	25.0%	16	25.00%	37.0%	-12.0%
CHAMPAIGN	69	71.9%	5	5.2%	22	22.9%	96	28.13%	25.0%	3.1%
CLARK	190	67.1%	13	4.6%	80	28.3%	283	32.86%	30.5%	2.4%
CLERMONT	297	75.6%	26	6.6%	70	17.8%	393	24.43%	25.0%	-0.6%
CLINTON	83	60.6%	6	4.4%	48	35.0%	137	39.42%	29.4%	10.0%
COLUMBIANA	111	76.6%	2	1.4%	32	22.1%	145	23.45%	14.7%	8.7%
COSHOCTON	40	66.7%	7	11.7%	13	21.7%	60	33.33%	31.7%	1.6%
CRAWFORD	33	45.8%	10	13.9%	29	40.3%	72	54.17%	51.1%	3.1%
CUYAHOGA	2520	69.8%	273	7.6%	815	22.6%	3608	30.16%	28.5%	1.7%
DARKE	26	68.4%	3	7.9%	9	23.7%	38	31.58%	21.4%	10.2%
DEFIANCE	64	58.2%	19	17.3%	27	24.5%	110	41.82%	35.3%	6.5%
DELAWARE	131	74.9%	11	6.3%	33	18.9%	175	25.14%	24.7%	0.4%
ERIE	140	64.5%	34	15.7%	43	19.8%	217	35.48%	37.9%	-2.4%
FAIRFIELD	137	67.2%	21	10.3%	46	22.5%	204	32.84%	38.6%	-5.8%
FAYETTE	73	62.4%	9	7.7%	35	29.9%	117	37.61%	38.8%	-1.2%
FRANKLIN	1165	69.5%	185	11.0%	326	19.5%	1676	30.49%	28.3%	2.2%
FULTON	63	75.9%	6	7.2%	14	16.9%	83	24.10%	28.8%	-4.7%
GALLIA	65	86.7%	2	2.7%	8	10.7%	75	13.33%	23.5%	-10.2%
GEAUGA	25	80.6%	2	6.5%	4	12.9%	31	19.35%	22.2%	-2.8%
GREENE	188	70.9%	20	7.5%	57	21.5%	265	29.06%	30.3%	-1.2%
GUERNSEY	63	70.8%	6	6.7%	20	22.5%	89	29.21%	25.5%	3.7%
HAMILTON	1381	72.0%	117	6.1%	419	21.9%	1917	27.96%	27.2%	0.8%
HANCOCK	78	75.7%	6	5.8%	19	18.4%	103	24.27%	23.2%	1.1%
HARDIN	30	60.0%	8	16.0%	12	24.0%	50	40.00%	48.9%	-8.9%
HARRISON	11	78.6%	0	0.0%	3	21.4%	14	21.43%	25.0%	-3.6%
HENRY	21	56.8%	6	16.2%	10	27.0%	37	43.24%	17.9%	25.3%
HIGHLAND	67	64.4%	4	3.8%	33	31.7%	104	35.58%	34.6%	1.0%
HOCKING	47	61.8%	9	11.8%	20	26.3%	76	38.16%	37.0%	1.2%
HOLMES	45	86.5%	2	3.8%	5	9.6%	52	13.46%	19.5%	-6.0%
HURON	67	68.4%	7	7.1%	24	24.5%	98	31.63%	31.6%	0.0%
JACKSON	36	64.3%	5	8.9%	15	26.8%	56	35.71%	32.8%	2.9%
JEFFERSON	63	73.3%	11	12.8%	12	14.0%	86	26.74%	34.5%	-7.8%
KNOX	45	73.8%	0	0.0%	16	26.2%	61	26.23%	39.0%	-12.8%
LAKE	197	71.9%	16	5.8%	61	22.3%	274	28.10%	29.9%	-1.8%
LAWRENCE	170	73.0%	25	10.7%	38	16.3%	233	27.04%	22.6%	4.4%
LICKING	217	72.6%	27	9.0%	55	18.4%	299	27.42%	28.3%	-0.9%
LOGAN	30	53.6%	5	8.9%	21	37.5%	56	46.43%	35.6%	10.8%
LORAIN	270	68.7%	40	10.2%	83	21.1%	393	31.30%	29.5%	1.8%
LUCAS	453	71.9%	57	9.0%	120	19.0%	630	28.10%	26.5%	1.6%
MADISON	64	75.3%	2	2.4%	19	22.4%	85	24.71%	18.5%	6.2%

Table 9. County of Commitment	2013 DRC Exits – 3 Year Recidivism Rate						Total N	2013 Total Recidivism Rate	2012 Total Recidivism Rate	Percentage Points Change
	No Recidivism		Technical Violation		New Crime					
	N	%	N	%	N	%				
MAHONING	331	74.7%	9	2.0%	103	23.3%	443	25.28%	26.5%	-1.2%
MARION	173	61.3%	29	10.3%	80	28.4%	282	38.65%	38.0%	0.7%
MEDINA	154	72.0%	4	1.9%	56	26.2%	214	28.04%	25.5%	2.5%
MEIGS	22	61.1%	2	5.6%	12	33.3%	36	38.89%	30.9%	8.0%
MERCER	32	56.1%	7	12.3%	18	31.6%	57	43.86%	29.6%	14.3%
MIAMI	143	70.1%	9	4.4%	52	25.5%	204	29.90%	33.3%	-3.4%
MONROE	18	72.0%	1	4.0%	6	24.0%	25	28.00%	20.0%	8.0%
MONTGOMERY	709	63.5%	133	11.9%	275	24.6%	1117	36.53%	31.7%	4.8%
MORGAN	8	72.7%	0	0.0%	3	27.3%	11	27.27%	36.4%	-9.1%
MORROW	20	71.4%	1	3.6%	7	25.0%	28	28.57%	27.0%	1.6%
MUSKINGUM	113	67.3%	11	6.5%	44	26.2%	168	32.74%	25.0%	7.7%
NOBLE	5	62.5%	1	12.5%	2	25.0%	8	37.50%	42.9%	-5.4%
OTTAWA	15	78.9%	1	5.3%	3	15.8%	19	21.05%	25.0%	-3.9%
PAULDING	27	58.7%	4	8.7%	15	32.6%	46	41.30%	33.3%	8.0%
PERRY	34	87.2%	0	0.0%	5	12.8%	39	12.82%	24.1%	-11.3%
PICKAWAY	82	57.3%	8	5.6%	53	37.1%	143	42.66%	38.7%	4.0%
PIKE	20	64.5%	3	9.7%	8	25.8%	31	35.48%	24.4%	11.1%
PORTAGE	122	71.3%	7	4.1%	42	24.6%	171	28.65%	21.3%	7.4%
PREBLE	40	64.5%	4	6.5%	18	29.0%	62	35.48%	29.8%	5.7%
PUTNAM	30	69.8%	6	14.0%	7	16.3%	43	30.23%	28.6%	1.6%
RICHLAND	218	58.4%	38	10.2%	117	31.4%	373	41.55%	38.5%	3.1%
ROSS	116	61.1%	21	11.1%	53	27.9%	190	38.95%	31.2%	7.7%
SANDUSKY	40	74.1%	4	7.4%	10	18.5%	54	25.93%	19.8%	6.1%
SCIOTO	247	77.7%	30	9.4%	41	12.9%	318	22.33%	27.9%	-5.6%
SENECA	68	68.7%	7	7.1%	24	24.2%	99	31.31%	30.0%	1.3%
SHELBY	62	66.0%	5	5.3%	27	28.7%	94	34.04%	33.8%	0.2%
STARK	428	63.0%	59	8.7%	192	28.3%	679	36.97%	30.6%	6.4%
SUMMIT	746	65.1%	100	8.7%	300	26.2%	1146	34.90%	33.3%	1.6%
TRUMBULL	190	73.4%	5	1.9%	64	24.7%	259	26.64%	26.7%	-0.1%
TUSCARAWAS	35	66.0%	5	9.4%	13	24.5%	53	33.96%	22.2%	11.8%
UNION	34	87.2%	1	2.6%	4	10.3%	39	12.82%	18.3%	-5.5%
VAN WERT	35	74.5%	4	8.5%	8	17.0%	47	25.53%	23.6%	1.9%
VINTON	14	43.8%	11	34.4%	7	21.9%	32	56.25%	25.0%	31.3%
WARREN	175	68.4%	24	9.4%	57	22.3%	256	31.64%	28.6%	3.0%
WASHINGTON	58	77.3%	7	9.3%	10	13.3%	75	22.67%	25.0%	-2.3%
WAYNE	55	74.3%	5	6.8%	14	18.9%	74	25.68%	27.1%	-1.4%
WILLIAMS	66	80.5%	4	4.9%	12	14.6%	82	19.51%	24.8%	-5.3%
WOOD	142	83.0%	4	2.3%	25	14.6%	171	16.96%	20.4%	-3.4%
WYANDOT	21	84.0%	2	8.0%	2	8.0%	25	16.00%	29.2%	-13.2%
Other	3	100.0%	0	0.0%	0	0.0%	3	0.00%	0.0%	0.0%
Total	14561	69.3%	1674	8.0%	4787	22.8%	21022	30.73%	29.3%	1.4%

***Based on the original county of commitment. Released offenders may or may not return to reside in the same county of commitment.**

****Offenders with multiple conviction counties are listed in each County Category. For the TOTAL line offenders are counted a single time; therefore, the totals are not sums of the columns above.**