



Ohio Department of Rehabilitation and Correction

1050 Freeway Drive North
Columbus, OH 43229

Bob Taft, Governor

www.drc.state.oh.us

Reginald A. Wilkinson, Director

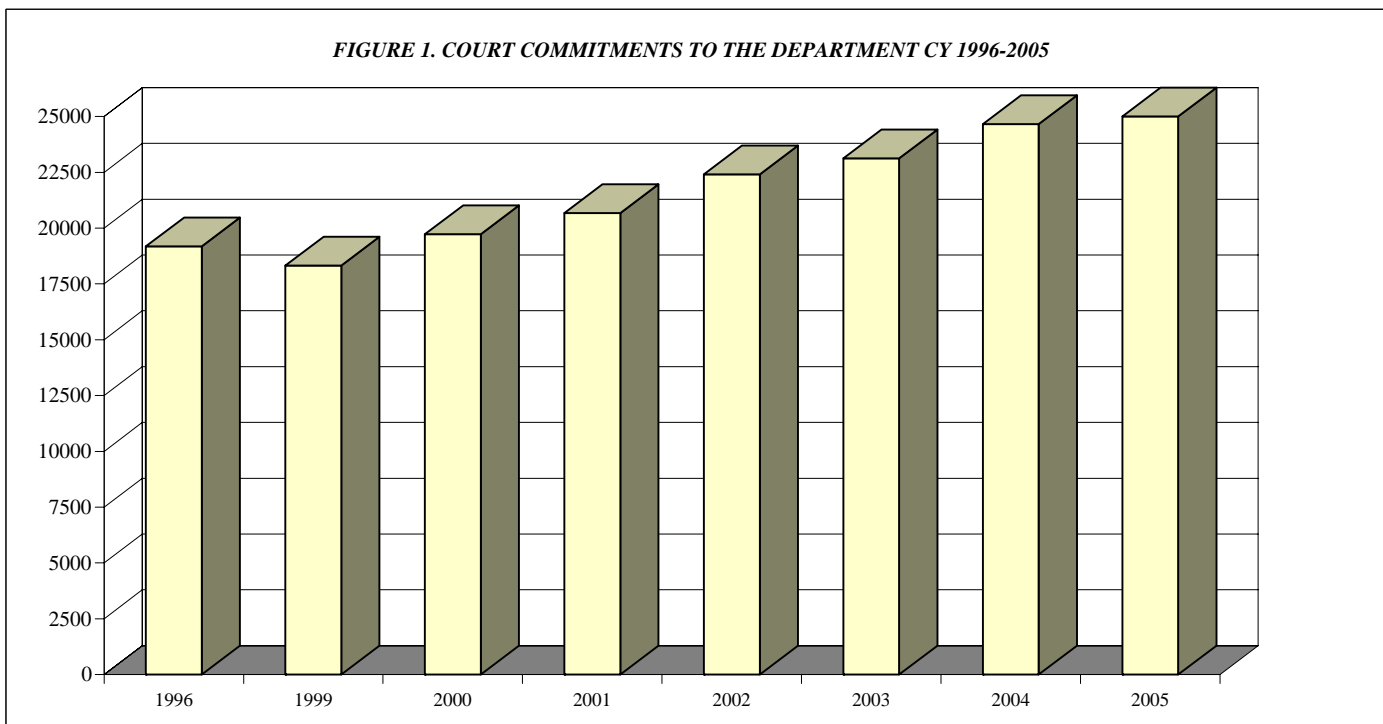
TO: ALL CONCERNED
FROM: SENARATH DASSANAYAKA, SENIOR RESEARCHER
 BUREAU OF RESEARCH
 OFFICE OF POLICY
DATE: 3/30/2006
SUBJECT: CALENDAR YEAR 2005 SUMMARY OF INSTITUTION STATISTICS

TOTAL COURT COMMITMENTS TO THE OHIO DEPARTMENT OF REHABILITATION AND CORRECTION:

OFFICIAL COMMITMENT TOTALS			
CRC RECEPTION - MALE	12,877	MALE INTAKE	22,646
LORCI RECEPTION - MALE	9,769	FEMALE INTAKE	3,195
ORW RECEPTION - FEMALE	3,195	TOTAL	25,841
TOTAL	25,841		

COURT COMMITMENTS TO THE DEPARTMENT CY 1996-2005									
1996	1997	1998	1999	2000	2001	2002	2003	2004	2005
19,184	17,600	18,252	18,325	19,721	20,669	22,411	23,126	24,662	25,841

FIGURE 1. COURT COMMITMENTS TO THE DEPARTMENT CY 1996-2005



NUMBER OF COMMITMENTS TO THE DEPARTMENT**								
CY 2005*	CRC MALE	LORCI MALE	MALE N	MALE %	ORW FEMALE	FEMALE %	TOTAL N	TOTAL %
1ST COMMITMENT	6,584	4,334	10,918	48.21%	2,116	66.23%	13,034	50.44%
2ND COMMITMENT	2,885	2,262	5,147	22.73%	579	18.12%	5,726	22.16%
3 OR MORE COMMITMENTS	3,408	3,173	6,581	29.06%	500	15.65%	7,081	27.40%
TOTAL	12,877	9,769	22,646	100.00%	3,195	100.00%	25,841	100.00%

NUMBER OF COMMITMENTS TO THE DEPARTMENT								
CY 2004*	CRC MALE	LORCI MALE	MALE N	MALE %	ORW FEMALE	FEMALE %	TOTAL N	TOTAL %
1ST COMMITMENT	6,394	4,260	10,654	49.42%	2,102	67.68%	12,756	51.72%
2ND COMMITMENT	2,694	2,285	4,979	23.10%	520	16.74%	5,499	22.30%
3 OR MORE COMMITMENTS	2,906	3,017	5,923	27.48%	484	15.58%	6,407	25.98%
TOTAL	11,994	9,562	21,556	100.00%	3,106	100.00%	24,662	100.00%

NUMBER OF COMMITMENTS TO THE DEPARTMENT								
CY 2003*	CRC MALE	LORCI MALE	MALE N	MALE %	ORW FEMALE	FEMALE %	TOTAL N	TOTAL %
1ST COMMITMENT	5,846	4,412	10,258	50.13%	1,757	66.00%	12,015	51.95%
2ND COMMITMENT	2,612	2,232	4,844	23.67%	443	16.64%	5,287	22.86%
3 OR MORE COMMITMENTS	2,704	2,658	5,362	26.20%	462	17.36%	5,824	25.18%
TOTAL	11,162	9,302	20,464	100.00%	2,662	100.00%	23,126	100.00%

* THIS TABLE IS PRODUCED FROM A DOTS SUMMARY OF PRIOR OHIO COMMITMENTS.

** Percentages may not total 100 due to rounding

FIGURE 2. DISTRIBUTION OF COURT COMMITMENTS CY 2005

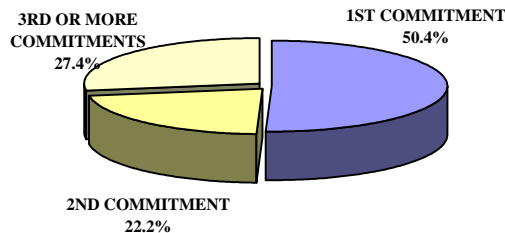
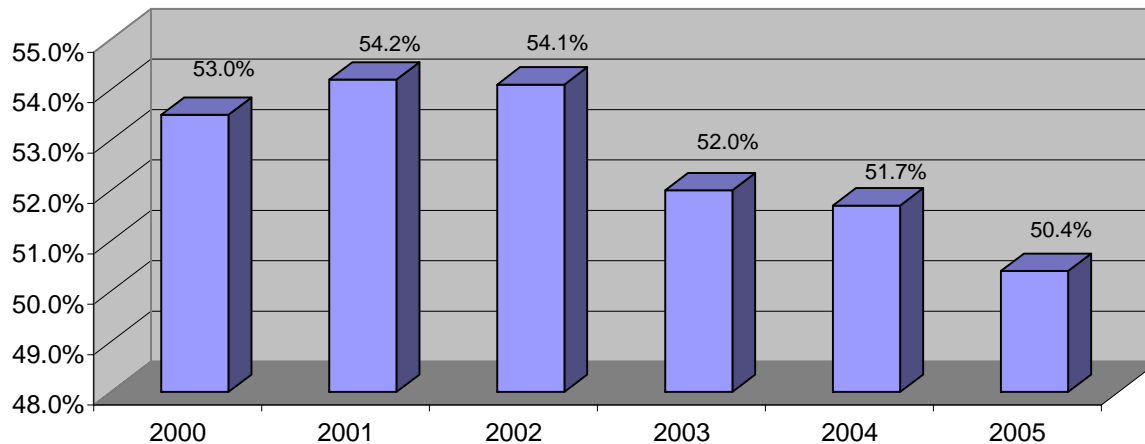


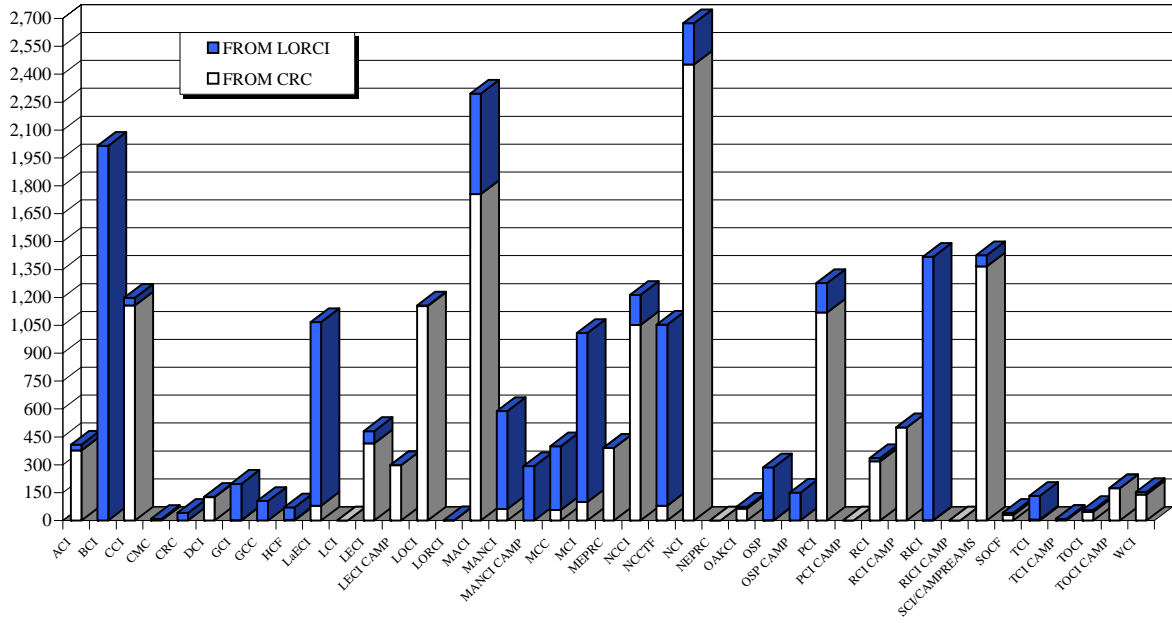
FIGURE 3. PERCENT OF INMATES SERVING A FIRST COMMITMENT CY 2000-2005



INMATE TRANSFERS FROM MALE RECEPTION CENTERS

	FROM CRC RECEPTION TO:				FROM LORCI RECEPTION TO:			
	2005	2004	2003	2002	2005	2004	2003	2002
ACI	377	381	383	297	31	37	39	32
BCI	0	26	1	1	2,015	1,488	1,249	1,104
CCI	1,157	1,000	1,140	523	40	50	36	48
CMC	4	4	3	28	4	3	1	12
CRC	0	0	0	0	42	14	16	27
DCI	126	139	196	277	2	1	13	3
GCI	2	4	0	43	195	219	286	106
GCC	0	0	0	0	105	0	0	0
HCI	3	36	91	70	68	114	59	45
LAECI	80	62	0	9	987	365	701	720
LCI	0	0	77	756	0	365	0	15
LECI	414	458	558	477	67	19	15	8
LECI CAMP	298	83	0	40	0	0	0	0
LOCI	1,153	1,022	662	629	3	4	7	4
LORCI	0	2	3	11	1	1	0	0
MACI	1,756	1,629	1,724	1,228	540	752	848	679
MANCI	62	33	34	64	526	643	870	571
MANCI CAMP	0	0	1	3	292	269	94	275
MCC	57	0	0	0	342	337	60	352
MCI	100	1	4	8	908	1,206	1,187	603
MEPRC	391	475	480	504	0	0	0	1
NCCI	1,051	1,186	892	366	162	18	22	60
NCCTF	80	61	245	404	973	810	712	705
NCI	2,452	1,513	1,538	1,318	222	544	214	247
OCF	0	0	45	38	0	10	14	28
OCI	63	30	0	2	11	0	0	4
OSP	2	1	1	1	284	324	411	177
OSP CAMP	0	0	0	0	149	105	62	310
PCI	1,119	1,661	1,921	1,747	158	210	525	915
PCI CAMP	0	7	0	38	0	0	0	0
RCI	318	663	810	616	18	23	34	26
RCI CAMP	500	224	23	76	0	0	0	0
RICI	2	15	0	15	1,416	1,440	1,235	1,135
RICI CAMP	0	0	0	0	0	0	0	13
SCU/CAMPREAMS	1,367	1,445	1,106	786	59	263	253	281
SOCF	30	17	16	22	12	9	24	45
TCI	5	4	14	6	127	345	741	435
TCI CAMP	8	0	0	0	0	183	86	322
TOCI	47	170	280	291	9	13	28	6
TOCI CAMP	174	72	0	23	0	1	0	8
WCI	140	119	89	184	13	9	2	6
TOTAL	13,338	12,543	12,337	10,901	9,781.00	10,194	9,844	9,328

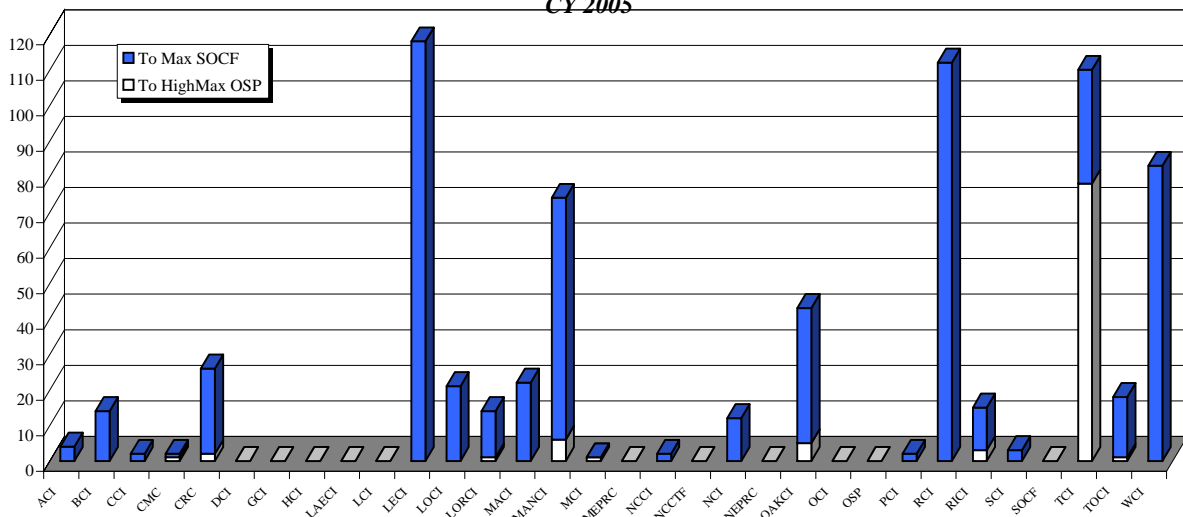
FIGURE 4. INMATES RECEIVED FROM CRC AND LORCI CY 2005



DISCIPLINARY AND ADMINISTRATIVE TRANSFERS

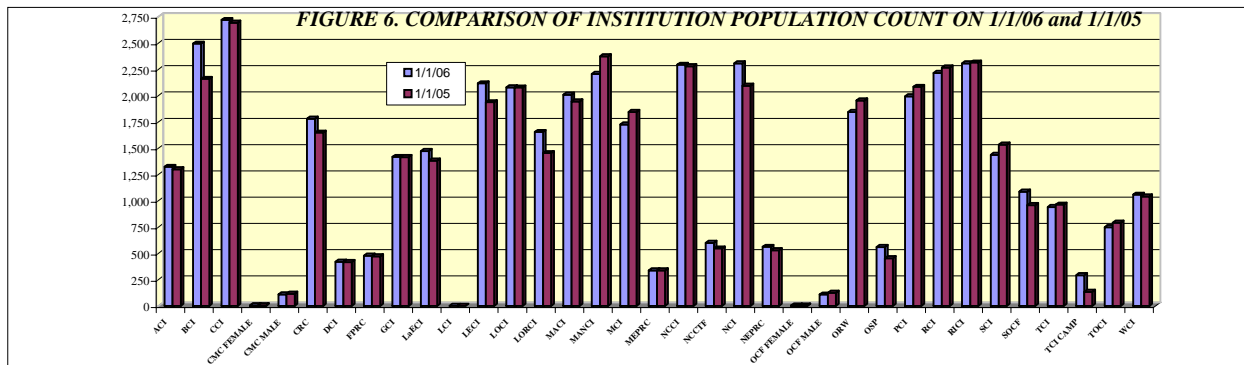
	FROM LESSER CUSTODY TO:				FROM HIGHER TO LESSER CUSTODY			
	HI MAX (LEVEL 5) (OSP)		MAXIMUM (LEVEL 4) (SOCF)		HI MAX (LEVEL 5) (OSP)		MAXIMUM (LEVEL 4) (SOCF)	
	2005	2004	2005	2004	2005	2004	2005	2004
ACI	0	0	4	1	0	0	0	0
BCI	0	0	14	19	0	0	10	13
CCI	0	0	2	5	0	0	1	0
CMC	1	1	1	0	0	2	1	3
CRC	2	2	24	16	3	2	21	20
DCI	0	0	0	0	0	0	0	0
GCI	0	0	0	0	0	0	0	0
HCI	0	0	0	0	0	0	0	0
LaECI	0	0	0	0	0	0	0	0
LCI	0	0	0	0	0	0	0	0
LECI	0	3	118	87	5	8	67	114
LOCI	0	0	21	19	0	1	6	4
LORCI	1	0	13	9	0	0	1	0
MACI	0	0	22	5	0	0	1	4
MANCI	6	3	68	98	13	17	27	35
MCI	1	0	0	1	0	0	0	0
MEPRC	0	0	0	0	0	0	0	0
NCCI	0	0	2	4	1	0	0	1
NCCTF	0	0	0	0	0	0	0	0
NCI	0	0	12	1	0	0	2	1
OCF	5	0	0	28	5	0	27	38
OCI	0	0	38	0	0	0	0	2
OSP	0	0	0	0	0	0	0	0
PCI	0	0	2	4	0	0	0	0
RCI	0	1	112	71	7	12	82	101
RICI	3	0	12	16	0	1	4	2
SCI	0	0	3	3	0	0	0	2
SOCF	0	78	0	0	48	49	0	0
TCI	78	17	32	26	15	11	15	23
TOCI	1	4	17	23	18	8	14	13
WCI	0	2	83	64	6	2	65	70
TOTAL	98	111	600	500	121	113	344	446

FIGURE 5. TRANSFERS TO HIGH MAX (LEVEL 5) AND MAXIMUM (LEVEL 4) CUSTODY IN CY 2005



END OF CALENDAR YEAR INSTITUTIONAL POPULATION COUNT:

INSTITUTION POPULATION TREND (PREVIOUS YEAR COMPARISON)		1/1/2006	1/1/2005	DIFFERENCE	
ACI	(Allen Correctional Institution)	1,323	1,301	22	1.7%
BCI	(Belmont Correctional Institution)	2,495	2,160	335	15.5%
CCI	(Chillicothe Correctional Institution)	2,720	2,695	25	0.9%
CMC MALE	(Correctional Medical Center)	111	116	-5	-4.3%
CRC	(Correctional Reception Center)	1,782	1,649	133	8.1%
DCI	(Dayton Correctional Institution)	420	418	2	0.5%
GCI	(Grafton Correctional Institution)	1,417	1,416	1	0.1%
HCI	(Hocking Correctional Institution)	461	465	-4	-0.9%
LaECI	(Lake Erie Correctional Institution)	1,474	1,382	92	6.7%
LECI	(Lebanon Correctional Institution)	2,117	1,938	179	9.2%
LOCI	(London Correctional Institution)	2,079	2,078	1	0.0%
LORCI	(Lorain Correctional Institution)	1,655	1,454	201	13.8%
MACI	(Madison Correctional Institution)	2,009	1,945	64	3.3%
MANCI	(Mansfield Correctional Institution)	2,207	2,374	-167	-7.0%
MCI	(Marion Correctional Institution)	1,727	1,846	-119	-6.4%
MEPRC	(Montgomery Education & Pre-Release Center)	338	339	-1	-0.3%
NCCI	(North Central Correctional Institution)	2,294	2,281	13	0.6%
NCCTF	(North Coast Correctional Treatment Facility)	601	547	54	9.9%
NCI	(Noble Correctional Institution)	2,307	2,095	212	10.1%
OCF MALE	(Oakwood Correctional Facility)	109	125	-16	-12.8%
OSP	(Ohio State Penitentiary)	560	455	105	23.1%
PCI	(Pickaway Correctional Institution)	1,995	2,084	-89	-4.3%
RCI	(Ross Correctional Institution)	2,217	2,269	-52	-2.3%
RICI	(Richland Correctional Institution)	2,307	2,316	-9	-0.4%
SCI	(Southeastern Correctional Institution)	1,437	1,534	-97	-6.3%
SOCF	(Southern Ohio Correctional Facility)	1,087	959	128	13.3%
TCI	(Trumbull Correctional Institution)	941	964	-23	-2.4%
TOCI	(Toledo Correctional Institution)	750	792	-42	-5.3%
WCI	(Warren Correctional Institution)	1,059	1,042	17	1.6%
MALE TOTAL		41,999	41,039	960	2.3%
CMC FEMALE	(Correctional Medical Center)	7	7	0	0.0%
FPRC	(Franklin Pre-Release Center)	478	472	6	1.3%
NEPRC	(Northeast Pre-Release Center)	562	531	31	5.8%
OCF FEMALE	(Oakwood Correctional Facility)	5	5	0	0.0%
ORW	(Ohio Reformatory for Women)	1,845	1,954	-109	-5.6%
TCI CAMP	(Trumbull Corr. Institution Camp)	293	134	159	118.7%
FEMALE TOTAL		3,190	3,103	87	2.8%
COMBINED MALE / FEMALE TOTAL		45,189	44,142	1,047	2.4%



RELEASES AND RETURNS:

INSTITUTIONAL STATISTICS

	CY 2005	CY 2005	CY 2005	CY 2004	CY 2003 TOTAL
	Male	Female	TOTAL	TOTAL	
RELEASED BY:					
SUSPENDED SENTENCE	32	1	33	19	34
VACATED SENTENCE	8	0	8	15	5
REGULAR PAROLE	2,434	88	2,522	3,950	4,964
SHOCK PAROLE	0	0	0	6	2
JUDICIAL RELEASE	1,360	390	1,750	1,691	1,685
POST RELEASE CONTROL	6,508	731	7,239	7,587	8,537
TRANSITIONAL CONTROL	2,179	253	2,432	2,279	1,472
EXPIRATION OF SENTENCE	277	104	381	479	734
END OF STATED TERM	10,622	1,547	12,169	11,981	10,154
APPEALS BOND	14	3	17	30	25
ESCAPES (numbers provided by the Office of Prisons)	4	0	4	7	3
DEATHS (numbers provided by the Bureau of Medical Services)	118	4	122	133	106
TOTAL RELEASED	23,556	3,121	26,677	28,177	27,721

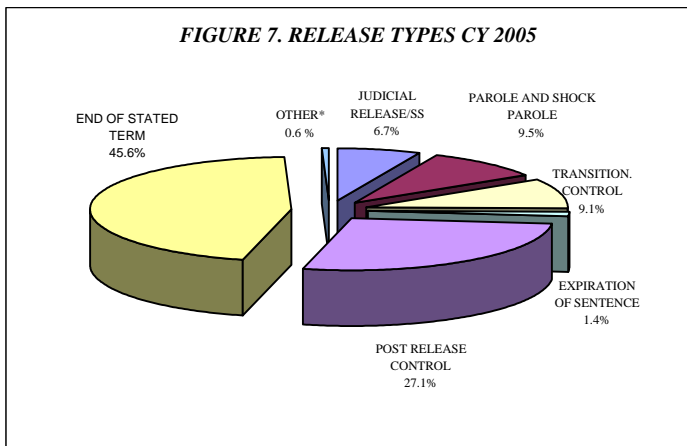
RETURNED BY:

PAROLE VIOLATION (TECH.) ¹	612	19	631	897	930
JUDICIAL RELEASE VIOLATION	636	184	820	709	780
POST RELEASE CONTROL VIOLATION ¹	1,469	77	1,546	1,976	1,634
TRANSITIONAL CONTROL VIOLATION	195	52	247	174	195
REACTIVATED SUSPENDED SENTENCE	17	5	22	30	20
ESCAPES RETURNED (numbers provided by the Office of Prisons)	5	0	5	7	3
APPEALS BOND	9	5	14	16	15
TOTAL RETURNED	2,943	342	3,285	3,809	3,577

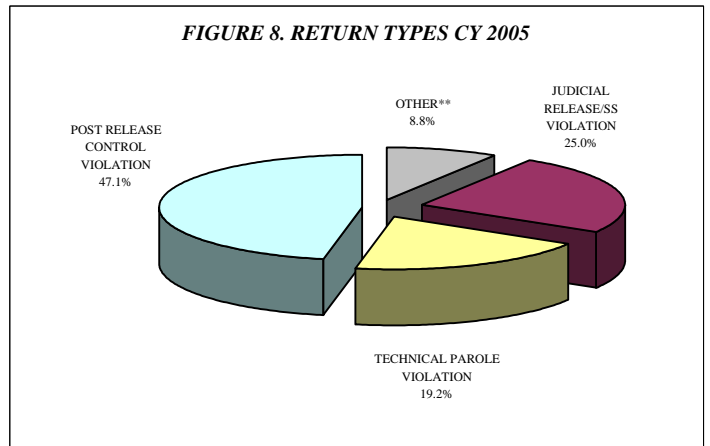
¹ Numbers taken from DOTS. PRC and Parole offenders being held at reception prior to a violation hearing have caused errors in the monthly report totals, so they are not summed for this report.

PAROLE VIOLATORS RECOMMISSIONED²	713	13	726	781	695
PRC FELONY VIOLATOR²	900	53	953	920	1,252

² PVR and PRC Felony Violator numbers from DOTS.



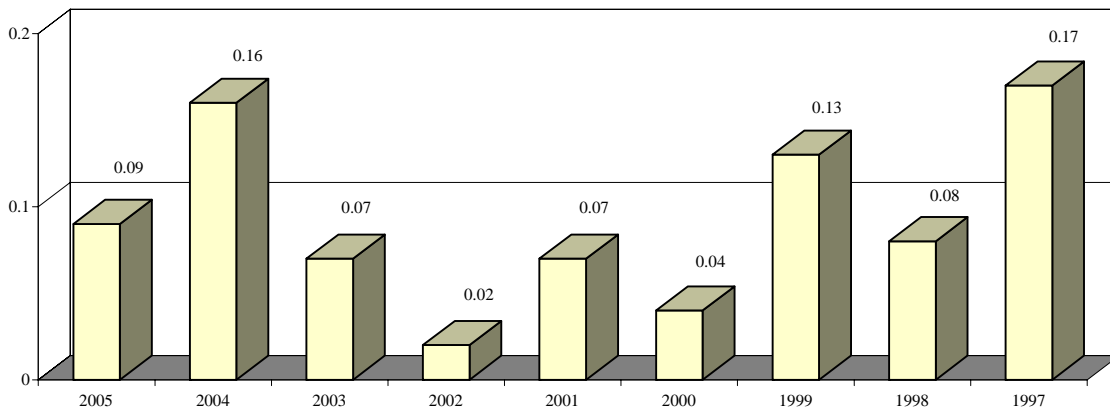
*Other includes the following releases: vacated sentences, appeals bond, escapes and deaths.



**Other includes returns for the following: transitional control violation, return from appeals bond and captured escapees.

ESCAPES AND RATES OF ESCAPE										
	2005	2004	2003	2002	2001	2000	1999	1998	1997	
ACI	0	0	0	0	0	0	0	0	0	0
BCI	0	0	0	0	0	0	0	0	0	0
CCI	0	0	0	0	0	0	0	2	0	0
CMC	0	0	0	0	0	0	0	0	0	0
CRC	0	0	0	0	0	0	0	0	0	0
DCI	1	0	0	0	0	0	0	0	0	0
FPRC	0	0	0	0	0	0	0	0	0	0
GCI	0	0	0	0	1	0	0	0	1	0
HCI	0	0	0	0	0	0	0	0	0	0
LAECI	0	0	0	0	0	0	0	0	0	0
LCI	0	0	0	0	0	0	0	0	0	0
LECI	0	0	0	0	1	0	0	0	0	0
LOCI	0	0	0	0	0	2	0	0	0	2
LORCI	0	0	0	0	0	0	0	0	0	0
MACI	0	0	0	0	0	0	1	0	0	0
MANCI	0	2	0	0	0	0	1	0	0	2
MCI	0	0	0	0	0	0	0	0	0	2
MEPRC	0	1	0	0	0	0	0	0	0	0
NEPRC	0	0	0	0	0	0	0	0	0	0
NCCI	0	0	0	0	0	0	0	0	0	0
NCCTF	0	0	0	0	0	0	0	0	0	0
NCI	0	0	0	0	0	0	0	0	0	0
OCF	0	0	0	0	0	0	0	0	0	0
OCI	0	0	0	0	0	0	0	0	0	0
ORW	0	0	0	0	0	0	0	0	0	0
OSP	1	0	0	0	0	0	0	0	0	0
PCI	2	2	1	0	0	0	1	1	1	1
RCI	0	2	1	0	0	0	0	1	0	0
RICI	0	0	0	0	0	0	0	0	0	0
SCI	0	0	1	1	1	0	1	1	1	1
SOCF	0	0	0	0	0	0	0	0	0	0
TCI	0	0	0	0	0	0	0	0	0	0
TOCI	0	0	0	0	0	0	0	0	0	0
WCI	0	0	0	0	0	0	0	0	0	0
TOTAL	4	7	3	1	3	2	6	4	8	
AVG. SYSTEM POPULATION FOR YEAR	44,142	44,100	45,084	45,005	45,196	46,196	47,039	48,581	46,965	
RATE OF ESCAPE PER 1000 INMATES	0.09	0.16	0.07	0.02	0.07	0.04	0.13	0.08	0.17	

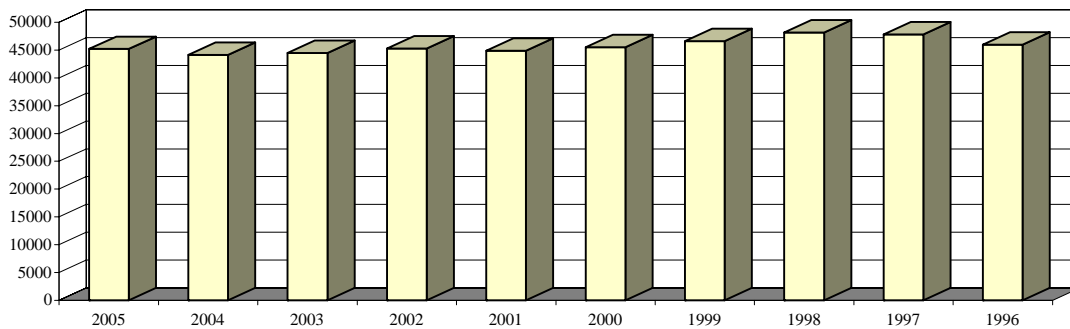
FIGURE 9. RATES OF ESCAPE CY 2005-1997



INSTITUTION POPULATION TRENDS:

END OF THE YEAR INSTITUTIONAL POPULATION TREND FOR 12/31/05 THROUGH 12/31/96										
	2005	2004	2003	2002	2001	2000	1999	1998	1997	1996
ACI	1,323	1,301	1,239	1,067	1,122	1,175	1,406	1,397	1,381	1,336
BCI	2,495	2,160	2,094	2,051	2,017	1,981	2,427	2,533	2,433	2,283
CCI	2,720	2,695	2,633	2,315	2,187	2,192	2,244	2,731	2,714	2,580
CMC MALE	111	116	108	106	99	101	151	140	150	149
CMC FEMALE	7	7	4	6	4	2	2	4	4	6
CRC	1,782	1,649	1,521	1,900	1,513	1,777	1,840	1,982	2,267	1,971
DCI	420	418	415	468	456	445	460	467	489	485
FPRC	478	472	473	479	436	394	407	453	475	489
GCI	1,417	1,416	1,369	1,343	1,354	1,358	1,601	1,587	1,658	1,622
HCI/HCF	461	465	455	418	400	396	438	441	446	432
LaECI	1,474	1,382	1,369	1,387	1,382	1,369	0	0	0	0
LCI	0	0	458	1,543	1,467	1,500	1,530	1,907	2,009	2,082
LECI	2,117	1,938	1,912	1,706	1,666	1,778	1,976	2,221	2,273	2,105
LOCI	2,079	2,078	2,048	2,033	2,057	1,947	1,885	1,901	1,877	1,896
LORCI	1,655	1,454	1,521	1,899	1,467	1,568	1,606	2,053	2,062	2,003
MACI	2,009	1,945	2,113	2,083	1,899	2,060	2,290	2,613	2,545	2,530
MANCI	2,207	2,374	2,349	2,297	2,308	2,286	2,469	2,637	2,669	2,598
MCI	1,727	1,846	1,659	1,694	1,763	1,803	1,918	2,206	2,111	2,109
MEPRC	338	339	337	318	292	305	306	340	347	324
NCCI	2,294	2,281	2,213	1,889	1,916	1,938	2,258	2,314	2,316	2,216
NCCTF	601	547	532	540	542	549	0	0	0	0
NCI	2,307	2,095	2,086	2,060	1,763	1,832	1,854	2,344	2,377	1,452
NEPRC	562	531	623	625	606	569	546	592	643	633
OCF MALE	109	125	123	161	175	144	158	173	168	162
OCF FEMALE	5	5	2	6	10	4	6	7	7	9
OCI	0	0	0	0	1,636	1,908	1,917	2,000	2,039	2,139
ORW FEMALE	1,845	1,954	1,754	1,767	1,696	1,774	1,845	1,830	1,682	1,642
ORW MALE	0	0	0	0	0	0	0	0	0	0
OSP	560	455	468	491	512	593	643	492	0	0
PCI	1,995	2,084	2,149	2,136	1,834	1,785	1,883	1,940	1,920	1,919
RCI	2,217	2,269	2,236	2,248	2,202	2,289	2,398	2,805	2,797	2,767
RICI	2,307	2,316	2,254	2,258	2,016	2,073	2,267	102	0	0
SCI	1,437	1,534	1,590	1,383	1,352	1,368	1,679	1,726	1,742	1,819
SOCF	1,087	959	1,047	1,382	1,449	1,435	1,456	1,425	1,425	1,304
TCI	941	964	1,380	1,371	1,408	1,327	1,409	1,447	1,446	1,424
TCI FEMALE	293	134	134	0	0	0	0	0	0	0
TOCI	750	792	791	779	718	222	0	0	0	0
WCI	1,059	1,042	1,025	1,075	1,144	1,258	1,344	1,361	1,336	1,476
TOTAL	45,189	44,142	44,484	45,284	44,868	45,505	46,619	48,171	47,808	45,962

FIGURE 10. INSTITUTION POPULATION TREND 12/31/ 2005-1996



END OF THE YEAR INSTITUTIONAL POPULATION TREND FOR 12/31/95 THROUGH 12/31/87										
	1995	1994	1993	1992	1991	1990	1989	1988	1987	
ACI	1415	1,481	1,355	1,105	1,007	975	885	712	635	
BCI	1891	224	0	0	0	0	0	0	0	
CCI	2621	2,780	2,821	2,802	2,634	2,460	2,217	1,976	1,886	
CLEV. P.R.	0	0	0	0	0	0	0	0	43	
CMC MALE	154	150	139	0	0	0	0	0	0	
CMC FEMALE	4	6	7	0	0	0	0	0	0	
CRC	2074	2,204	2,318	2,207	2,223	1,423	1,540	1,333	873	
DCI	484	478	484	485	481	454	469	473	435	
EDP	0	0	0	0	0	343	385	193	0	
FPRC	500	435	429	364	354	1,012	925	167	0	
GCI	1590	1,596	1,435	1,289	1,161	0	0	0	0	
HCI/HCF	436	417	446	395	392	396	321	327	319	
LaECI	0	0	0	0	0	0	0	0	0	
LCI	2110	2,051	1,954	1,902	1,909	1,848	1,726	1,719	1,546	
LECI	2198	2,139	2,196	2,188	1,939	1,948	1,935	1,861	1,871	
LOCI	2366	2,335	2,400	2,394	2,447	1,484	0	0	0	
LORCI	1863	2,327	2,329	2,175	1,905	2,250	2,173	1,829	1,987	
MACI	2311	2,315	2,312	2,069	1,942	1,696	1,697	1,360	820	
MANCI	2637	2,320	2,455	2,341	2,119	1,411	0	0	0	
MCI	2093	2,207	2,307	2,104	1,856	1,775	1,937	1,941	1,961	
MEPRC	349	337	0	0	0	0	0	0	0	
NCCI	2274	724	0	0	0	0	0	0	0	
NCCTF	0	0	0	0	0	0	0	0	0	
NCI	0	0	0	0	0	0	0	0	0	
NEPRC	645	613	659	611	491	340	413	173	0	
OCF MALE	229	97	0	0	0	0	0	0	0	
OCF FEMALE	0	0	0	0	0	0	0	0	0	
OCI	2245	2,340	2,280	2,257	2,266	2,135	2,053	1,709	1,578	
ORW FEMALE	1594	1,490	1,443	1,389	1,412	1,213	1,569	1,280	1,183	
ORW MALE	0	209	249	0	0	0	0	0	0	
OSP	0	0	0	0	0	0	2,131	2,188	2,317	
PCI	1923	1,942	1,942	1,912	1,792	1,536	1,518	1,265	1,575	
RCI	2618	2,813	2,892	2,646	2,372	2,222	1,920	1,584	1,305	
RICI	0	0	0	0	0	0	0	0	0	
SCI/SOTC	1751	2,044	1,905	2,018	1,705	1,533	1,466	1,528	1,453	
SOCF	1076	1,060	1,093	1,831	1,637	1,829	2,133	2,101	2,156	
TCI	1375	973	948	83	0	0	0	0	0	
WCI	1,512	1,502	1,455	1,424	1,402	1,218	887	142	0	
TOTAL	44338	41,609	40,253	37,991	35,446	31,501	30,300	25,861	23,943	

