



# Ohio Department of Rehabilitation and Correction

John R. Kasich, Governor

www.drc.ohio.gov

Gary C. Mohr, Director

**TO:** ALL CONCERNED

**FROM:** SENARATH DASSANAYAKA, SENIOR RESEARCHER  
BUREAU OF RESEARCH  
OFFICE OF POLICY

**DATE:** 5/12/2015

**SUBJECT:** CALENDAR YEAR 2014 SUMMARY OF INSTITUTION STATISTICS

**TOTAL COURT COMMITMENTS TO THE OHIO DEPARTMENT OF REHABILITATION AND CORRECTION:**

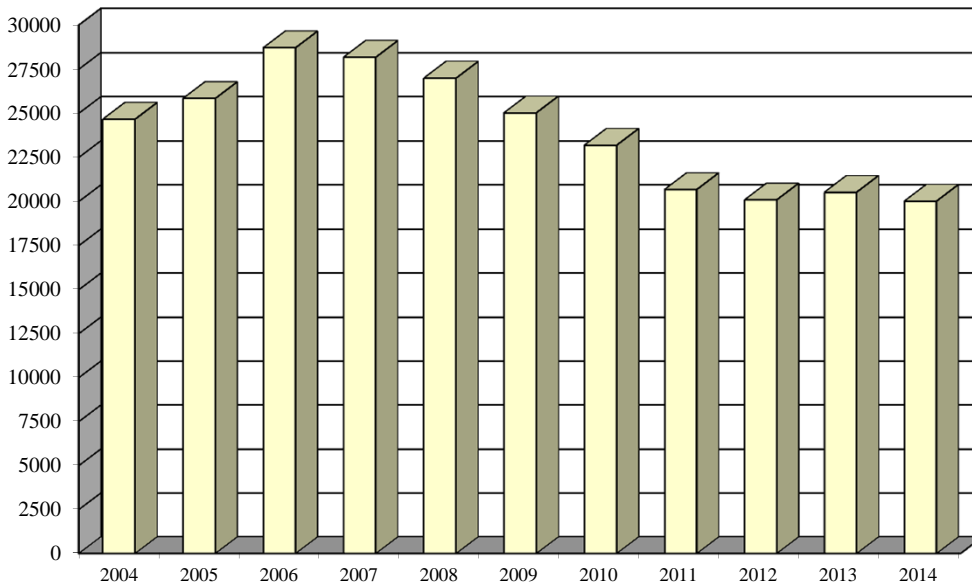
**OFFICIAL COMMITMENT TOTALS**

CRC RECEPTION - MALE	10,211	MALE INTAKE	17,189
LORCI RECEPTION - MALE	6,978	FEMALE INTAKE	2,834
ORW RECEPTION - FEMALE	2,834	<b>TOTAL</b>	<b>20,023</b>
<b>TOTAL</b>	<b>20,023</b>		

**COURT COMMITMENTS TO THE DEPARTMENT CY 2004-2014**

Year	2004	2005	2006	2007	2008	2009	2010	2011	2012	2013	2014	
Total commitments	24662	25841	28714	28178	26993	25031	23191	20682	20094	20528	20023	
% Diff. from Prev. year		6.20%	4.8%	11.1%	-1.9%	-4.2%	-7.3%	-7.4%	-10.8%	-2.8%	2.2%	-2.5%

**FIGURE 1. COURT COMMITMENTS TO THE DEPARTMENT CY 2004- 2014**



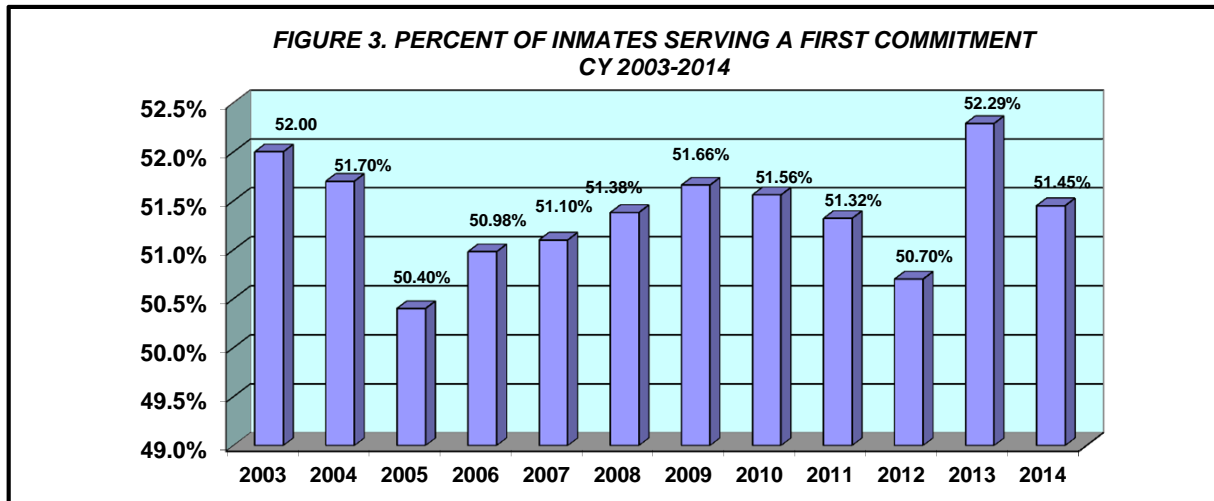
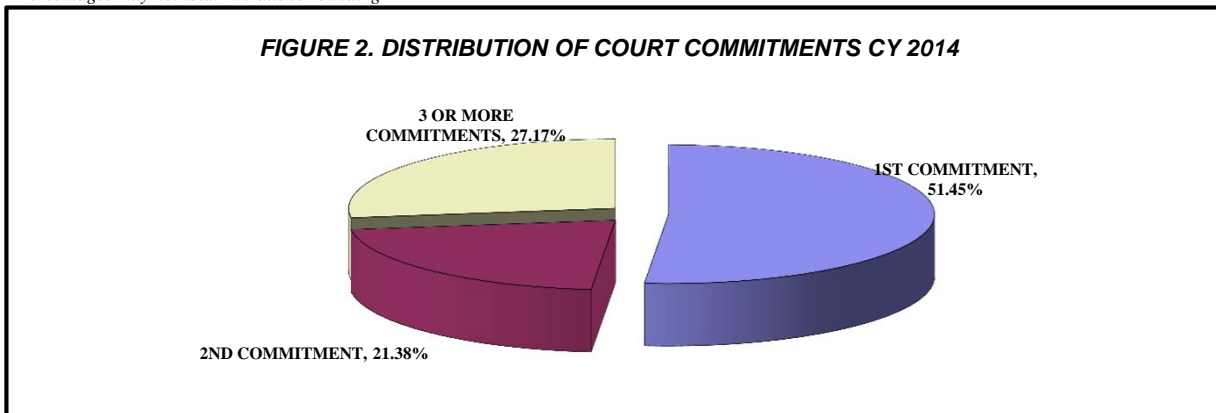
NUMBER OF COMMITMENTS TO THE DEPARTMENT**								
CY 2014*	CRC MALE	LORCI MALE	MALE N	MALE %	ORW FEMALE	FEMALE %	TOTAL N	TOTAL %
1ST COMMITMENT	5,089	3,176	8,265	48.08%	2,037	71.88%	10,302	51.45%
2ND COMMITMENT	2,240	1,565	3,805	22.14%	475	16.76%	4,280	21.38%
3 OR MORE COMMITMENTS	2,882	2,237	5,119	29.78%	322	11.36%	5,441	27.17%
<b>TOTAL</b>	<b>10,211</b>	<b>6,978</b>	<b>17,189</b>	<b>100.00%</b>	<b>2,834</b>	<b>100.00%</b>	<b>20,023</b>	<b>100.00%</b>

NUMBER OF COMMITMENTS TO THE DEPARTMENT**								
CY 2013*	CRC MALE	LORCI MALE	MALE N	MALE %	ORW FEMALE	FEMALE %	TOTAL N	TOTAL %
1ST COMMITMENT	5,343	3,304	8,647	50.31%	2,088	73.68%	10,735	52.29%
2ND COMMITMENT	2,321	1,544	3,865	22.49%	465	16.41%	4,330	21.09%
3 OR MORE COMMITMENTS	2,843	2,319	5,162	30.03%	301	10.62%	5,463	26.61%
<b>TOTAL</b>	<b>10,507</b>	<b>7,167</b>	<b>17,674</b>	<b>102.82%</b>	<b>2,854</b>	<b>100.71%</b>	<b>20,528</b>	<b>100.00%</b>

NUMBER OF COMMITMENTS TO THE DEPARTMENT**								
CY 2012*	CRC MALE	LORCI MALE	MALE N	MALE %	ORW FEMALE	FEMALE %	TOTAL N	TOTAL %
1ST COMMITMENT	5,013	3,389	8,402	47.97%	1,786	69.22%	10,188	50.70%
2ND COMMITMENT	2,215	1,637	3,852	21.99%	454	17.60%	4,306	21.43%
3 OR MORE COMMITMENTS	2,865	2,395	5,260	30.03%	340	13.18%	5,600	27.87%
<b>TOTAL</b>	<b>10,093</b>	<b>7,421</b>	<b>17,514</b>	<b>100.00%</b>	<b>2,580</b>	<b>100.00%</b>	<b>20,094</b>	<b>100.00%</b>

\* THIS TABLE IS PRODUCED FROM A DOTS SUMMARY OF PRIOR OHIO COMMITMENTS.

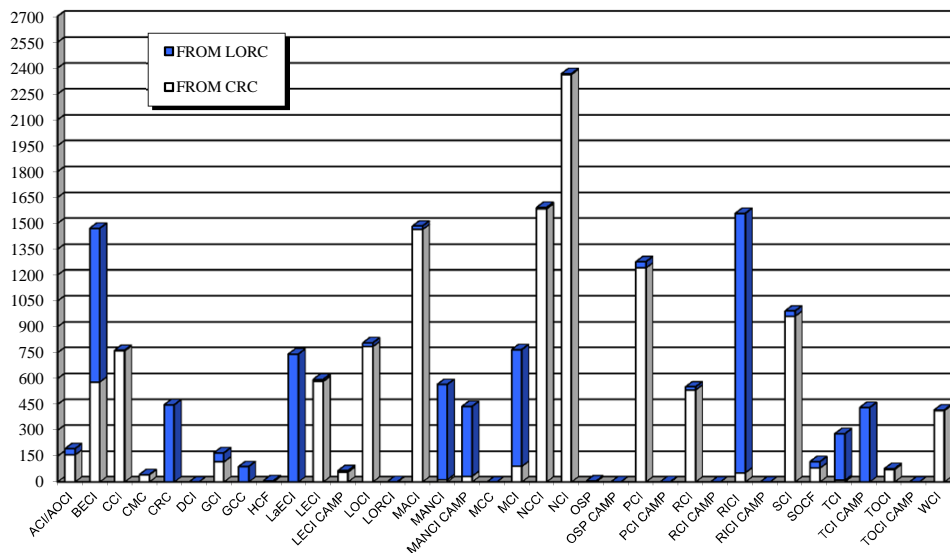
\*\* Percentages may not total 100 due to rounding



**INMATE TRANSFERS FROM MALE RECEPTION CENTERS**

	FROM CRC RECEPTION TO:				FROM LORCI RECEPTION TO:			
	2014	2013	2012	2011	2014	2013	2012	2011
ACI/AOCI	157	47	179	163	36	41	22	18
BECI	580	490	498	1034	891	1232	1507	989
CCI	760	771	253	500	4	2	7	6
CMC	42	5	2	1	1	1	0	1
CRC	0	0	0	0	448	306	17	13
DCI	0	8	0	20	0	0	0	0
FPRC	0	0	152	152	0	0	0	0
GCI	117	143	37	1	52	171	50	62
GCC	0	29	0	0	90	51	0	0
HCI	0	90	24	76	0	0	16	9
LAECI	0	0	0	0	742	1447	1302	806
LECI	583	595	306	435	12	57	24	26
LECI CAMP	58	78	63	94	8	0	0	0
LOCI	785	851	713	657	22	24	48	6
LORCI	3	5	3	0	0	0	0	0
MACI	1464	1227	1287	1241	20	194	375	486
MANCI	14	13	5	11	552	423	409	269
MANCI CAMP	34	99	0	0	405	389	400	344
MCC	0	0	0	0	0	0	103	0
MCI	91	7	14	4	677	827	871	758
NCCI	1584	1686	959	218	8	6	45	947
NCCTF	0	0	0	36	0	0	0	734
NCI	2363	2244	2134	2367	4	19	120	4
OCF	0	0	2	17	0	0	0	4
OSP	3	2	6	1	3	9	1	7
OSP CAMP	0	0	0	12	1	0	74	295
PCI	1241	1319	1295	1069	36	35	12	26
PCI CAMP	0	0	0	0	3	1	1	0
RCI	534	521	663	334	18	45	65	12
RCI CAMP	0	0	0	51	0	0	0	0
RICI	54	0	0	3	1504	1663	1721	1480
RICI CAMP	0	0	0	0	0	4	24	3
SCI	961	964	1129	1199	31	47	56	59
SOCF	81	36	22	15	37	20	32	17
TCI	11	4	7	16	269	337	296	133
TCI CAMP	0	0	0	0	432	357	0	0
TOCI	73	4	61	143	5	75	38	152
TOCI CAMP	0	0	0	13	0	40	1	0
WCI	414	261	197	189	4	13	17	10
<b>TOTAL</b>	<b>12007</b>	<b>11499</b>	<b>10011</b>	<b>10072</b>	<b>7030</b>	<b>7836</b>	<b>7654</b>	<b>7676</b>

**FIGURE 4. INMATES RECEIVED FROM CRC AND LORCI CY 2014**

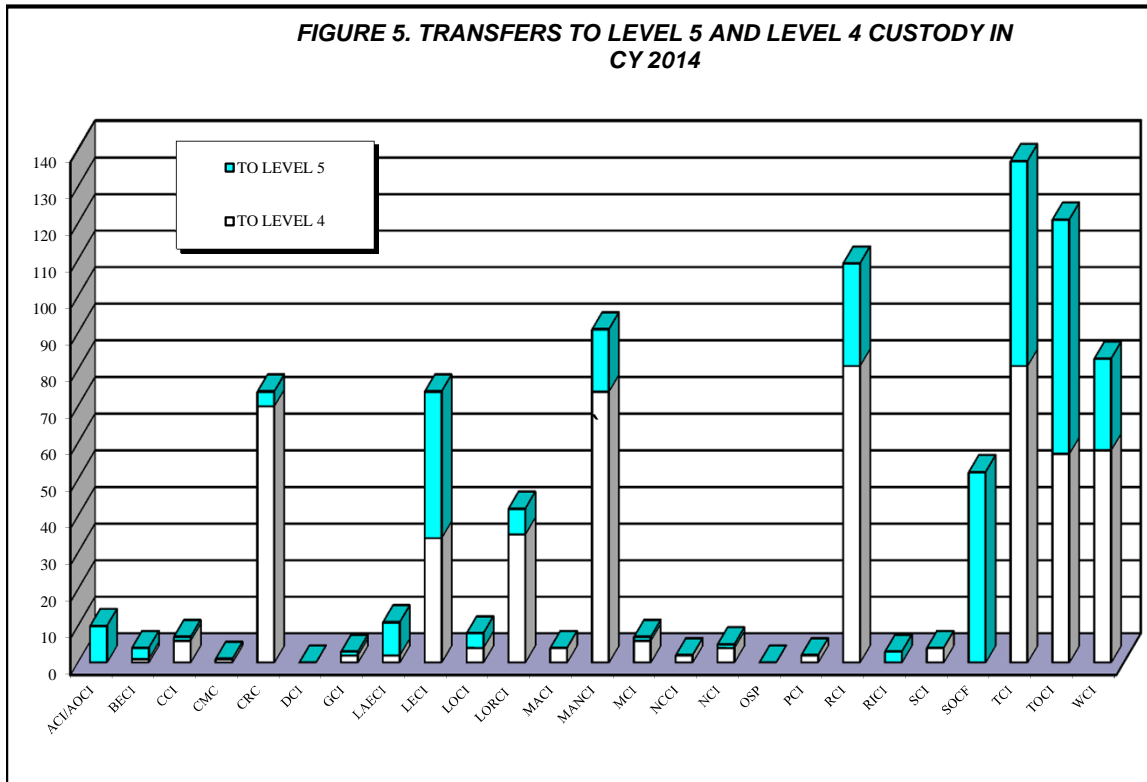


**FROM LESSER CUSTODY TO:**

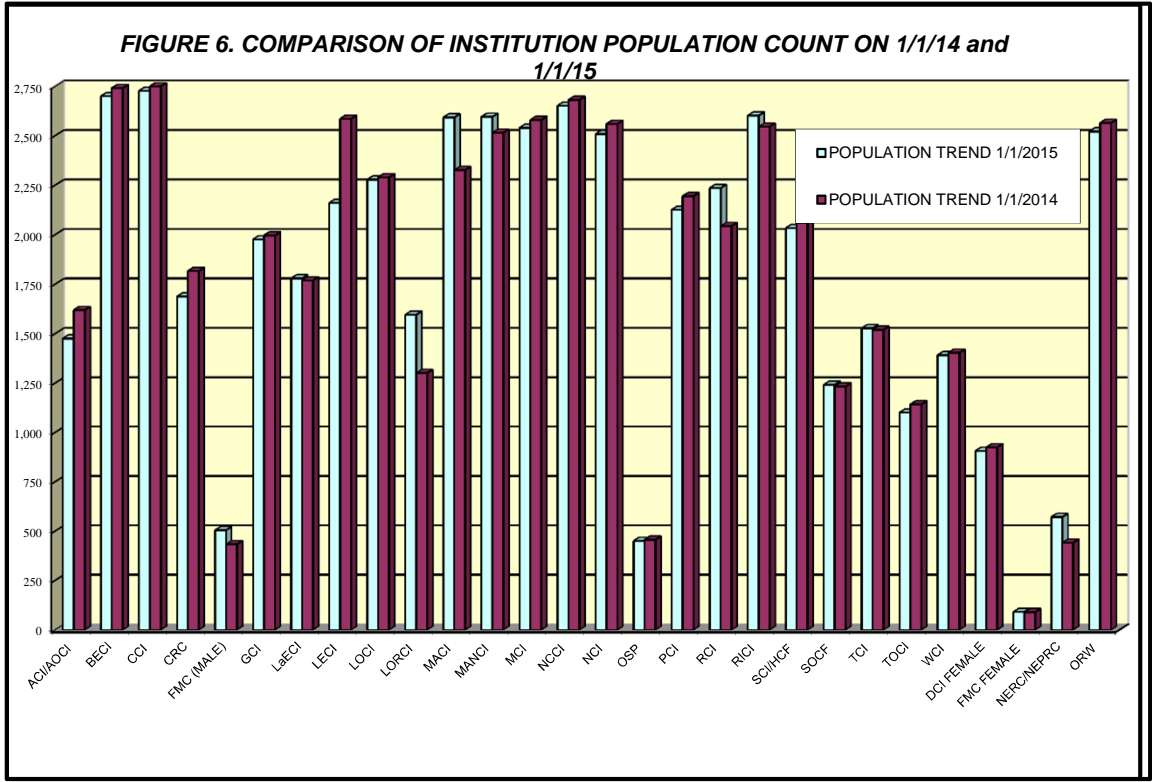
**FROM HIGHER TO LESSER CUSTO**

	LEVEL 5		LEVEL 4		LEVEL 5		LEVEL 4	
	(OSP)		(SOCF)		(OSP)		(SOCF)	
	2014	2013	2014	2013	2014	2013	2014	2013
ACI/AOCI	10	0	0	0	1	0	0	0
BECI	3	0	1	8	0	0	0	0
CCI	1	0	6	6	0	1	0	0
CMC	0	1	1	0	1	1	0	2
CRC	4	2	70	35	5	4	26	18
DCI	0	0	0	0	0	0	0	0
GCI	1	0	2	0	0	1	0	0
LaECI	9	25	2	4	0	0	0	0
LECI	40	20	34	70	8	5	56	49
LOCI	4	1	4	5	0	0	0	0
LORCI	7	10	35	20	7	4	0	0
MACI	0	0	4	6	0	1	0	0
MANCI	17	27	74	119	14	29	49	68
MCI	1	1	6	5	0	0	0	0
NCCI	0	0	2	1	0	0	0	0
NCI	1	2	4	17	1	0	0	0
OSP	0	0	0	2	0	0	0	4
PCI	0	0	2	8	0	0	0	0
RCI	28	30	81	43	1	2	92	42
RICI	3	7	0	1	3	3	0	0
SCI	0	0	4	1	0	0	0	0
SOCF	52	48	0	0	38	35	0	0
TCI	56	22	81	32	12	4	29	23
TOCI	64	48	57	29	155	123	37	7
WCI	25	24	58	22	11	16	60	51
<b>TOTAL</b>	<b>326</b>	<b>268</b>	<b>528</b>	<b>434</b>	<b>257</b>	<b>229</b>	<b>349</b>	<b>264</b>

**FIGURE 5. TRANSFERS TO LEVEL 5 AND LEVEL 4 CUSTODY IN CY 2014**



END OF CALENDAR YEAR INSTITUTIONAL POPULATION COUNT:					
INSTITUTION POPULATION TREND (PREVIOUS YEAR COMPARISON)					
MALE INSTITUTIONS		1/1/2015	1/1/2014	DIFFERENCE	
ACI/AOCI	(Allen Correctional/Allen Oakwood Correctional Institution)	1476	1620	-144	-9.8%
BECI	(Belmont Correctional Institution)	2700	2741	-41	-1.5%
CCI	(Chillicothe Correctional Institution)	2727	2828	-101	-3.7%
CRC	(Correctional Reception Center)	1688	1817	-129	-7.6%
FMC (MALE)	(Franklin Medical Center)	505	434	71	14.1%
GCI	(Grafton Correctional Institution)	1977	1997	-20	-1.0%
LaECI	(Lake Erie Correctional Institution)	1780	1769	11	0.6%
LECI	(Lebanon Correctional Institution)	2161	2586	-425	-19.7%
LOCI	(London Correctional Institution)	2279	2290	-11	-0.5%
LORCI	(Lorain Correctional Institution)	1596	1302	294	18.4%
MACI	(Madison Correctional Institution)	2593	2327	266	10.3%
MANCI	(Mansfield Correctional Institution)	2596	2516	80	3.1%
MCI	(Marion Correctional Institution)	2540	2580	-40	-1.6%
NCCI	(North Central Correctional Institution)	2652	2681	-29	-1.1%
NCI	(Noble Correctional Institution)	2509	2560	-51	-2.0%
OSP	(Ohio State Penitentiary)	451	457	-6	-1.3%
PCI	(Pickaway Correctional Institution)	2126	2195	-69	-3.2%
RCI	(Ross Correctional Institution)	2236	2044	192	8.6%
RICI	(Richland Correctional Institution)	2602	2546	56	2.2%
SCI/HCF	(Southeastern Correctional Institution)	2034	2062	-28	-1.4%
SOCF	(Southern Ohio Correctional Facility)	1242	1233	9	0.7%
TCI	(Trumbull Correctional Institution)	1528	1520	8	0.5%
TOCI	(Toledo Correctional Institution)	1101	1143	-42	-3.8%
WCI	(Warren Correctional Institution)	1392	1404	-12	-0.9%
<b>MALE TOTAL</b>		<b>46491</b>	<b>46652</b>	<b>-161</b>	<b>-0.3%</b>
FEMALE INSTITUTIONS					
FMC FEMALE	(Franklin Medical Center)	91	90	1	1.1%
NERC/NEPRC	(Northeast Reintegration Center/Northeast Pre-Release Center)	572	442	130	22.7%
ORW	(Ohio Reformatory for Women)	2522	2565	-43	-1.7%
DCI	(Dayton Correctional Institution)	907	925	-18	-2.0%
<b>FEMALE TOTAL</b>		<b>4092</b>	<b>4022</b>	<b>70</b>	<b>1.7%</b>
<b>COMBINED MALE / FEMALE TOTAL</b>		<b>50583</b>	<b>50674</b>	<b>-91</b>	<b>-0.2%</b>



**RELEASES AND RETURNS:**  
**INSTITUTIONAL STATISTICS**

RELEASED BY:	CY 2014			CY 2011	CY 2011	CY 2011	CY 2010
	Female	Male	TOTAL	TOTAL	TOTAL	TOTAL	TOTAL
SUSPENDED SENTENCE	1	4	5	12	1	4	5
VACATED SENTENCE	0	0	0	0	9	12	13
REGULAR PAROLE	7	42	49	60	144	142	526
SHOCK PAROLE	0	0	0	0	0	2	8
JUDICIAL RELEASE	510	1,827	2,337	2,250	2,418	2,202	2,172
POST RELEASE CONTROL	596	8,044	8,640	8,529	8,241	6,351	5,687
TRANSITIONAL CONTROL	553	2,888	3,441	2,894	3,037	2,577	2,481
EXPIRATION OF SENTENCE	1	59	60	38	219	179	219
END OF STATED TERM	1,316	6,809	8,125	7,598	8,041	10,971	13,179
APPEALS BOND	5	15	20	16	12	20	19
ESCAPES/WALKAWAYS (numbers provided by the Office of Prisons)	0	0	0	3	0	1	1
DEATHS (numbers provided by the Bureau of Medical Services)	13	95	108	124	130	106	132
<b>TOTAL RELEASED</b>	<b>3,002</b>	<b>19,783</b>	<b>22,785</b>	<b>21,524</b>	<b>22,252</b>	<b>22,567</b>	<b>24,442</b>

**TECHNICAL RETURNED BY:**

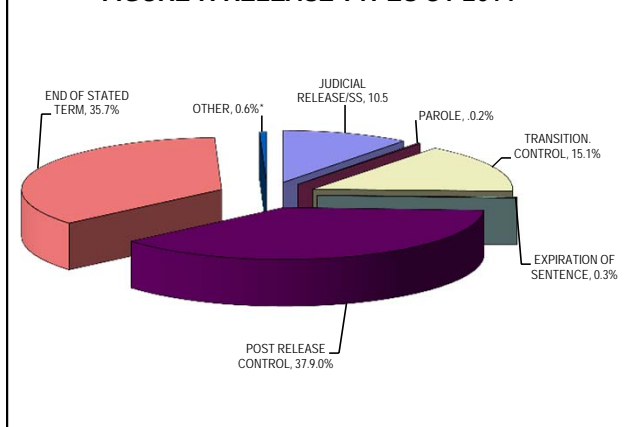
PAROLE VIOLATION <sup>1</sup>	2	119	121	70	56	137	185
JUDICIAL RELEASE VIOLATION	119	562	681	738	617	688	793
POST RELEASE CONTROL VIOLATION <sup>1</sup>	60	1,259	1,319	959	750	564	829
TRANSITIONAL CONTROL VIOLATION	54	302	356	337	367	227	169
REACTIVATED SUSPENDED SENTENCE	0	3	3	2	1	5	5
ESCAPES RETURNED	1	5	6	3	11	5	9
APPEALS BOND	1	16	17	13	11	14	13
<b>TOTAL RETURNED</b>	<b>237</b>	<b>2,266</b>	<b>2,503</b>	<b>2,122</b>	<b>1,813</b>	<b>1,640</b>	<b>1,514</b>

1. Numbers taken from DOTS. PRC and Parole offenders being held at reception prior to a violation hearing have caused errors in the monthly report totals, so they are not summed for this report.

PAROLE VIOLATORS RECOMMISSIONED <sup>2,3</sup>	0	15	15	30	60	137	204
PRC FELONY VIOLATOR <sup>2,3</sup>	60	1,647	1,707	1,413	1,095	825	748

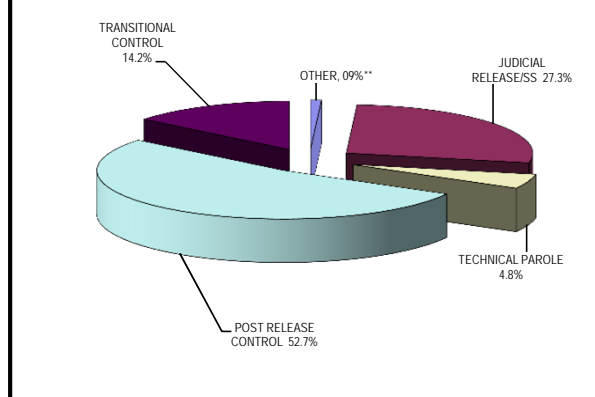
2. PVR and PRC Felony Violator numbers from DOTS PRC Felony Violator counts are being determined in an improved way for CY 2008 and after.  
3. These totals are counted as part of "commitments from court" reported on page 1

**FIGURE 7. RELEASE TYPES CY 2014**



\*Other includes the following releases: vacated sentences, appeals bond, escapes and deaths.

**FIGURE 8. TECHNICAL RETURN TYPES CY 2014**

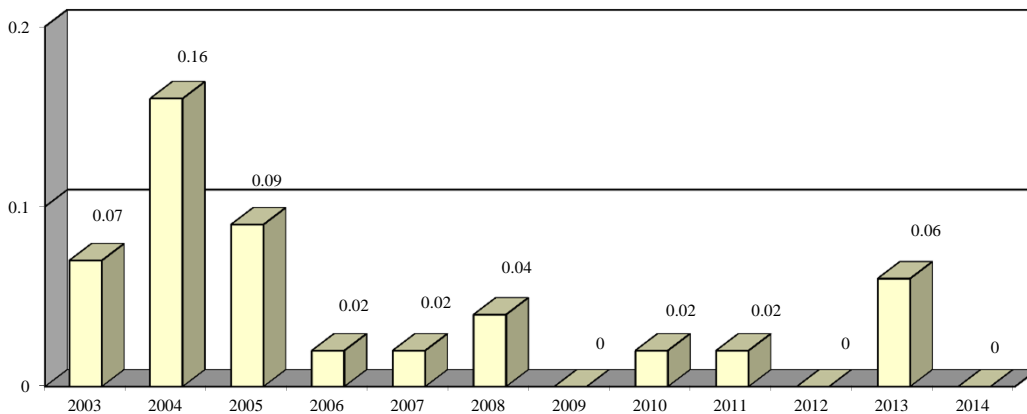


\*\*Other includes returns for the following: return from appeals bond and captured escapees.

ESCAPES/WALKAWAYS AND RATES OF ESCAPES/WALKAWAYS												
	2003	2004	2005	2006	2007	2008	2009	2010	2011	2012	2013	2014
ACI	0	0	0	0	0	0	0	0	0	0	0	0
BECI	0	0	0	0	0	0	0	0	0	0	0	0
CCI	0	0	0	0	0	0	0	0	0	0	0	0
CMC	0	0	0	0	0	0	0	0	0	0	1	0
CRC	0	0	0	0	0	0	0	0	0	0	0	0
DCI	0	0	1	0	0	0	0	0	0	0	0	0
FPRC	0	0	0	0	0	0	0	0	0	0	0	0
GCI	0	0	0	0	0	0	0	0	0	0	0	0
HCI	0	0	0	0	0	0	0	0	0	0	0	0
LAECI	0	0	0	0	0	0	0	0	0	0	0	0
LCI	0	0	0	0	0	0	0	0	0	0	0	0
LECI	0	0	0	1	0	0	0	0	0	0	0	0
LOCI	0	0	0	0	0	0	0	0	0	0	1	0
LORCI	0	0	0	0	0	1	0	0	0	0	0	0
MACI	0	0	0	0	0	0	0	0	0	0	0	0
MANCI	0	2	0	0	0	0	0	0	1	0	1	0
MCI	0	0	0	0	0	0	0	0	0	0	0	0
MEPRC	0	1	0	0	0	0	0	0	0	0	0	0
NEPRC	0	0	0	0	0	0	0	0	0	0	0	0
NCCI	0	0	0	0	0	0	0	0	0	0	0	0
NCCTF	0	0	0	0	0	0	0	0	0	0	0	0
NCI	0	0	0	0	0	0	0	0	0	0	0	0
OAKCI	0	0	0	0	0	0	0	0	0	0	0	0
ORW	0	0	0	0	0	0	0	0	0	0	0	0
OSP	0	0	1	0	0	0	0	0	0	0	0	0
PCI	1	2	2	0	0	0	0	0	0	0	0	0
RCI	1	2	0	0	0	1	0	0	0	0	0	0
RICI	0	0	0	0	0	0	0	0	0	0	0	0
SCI	1	0	0	0	1	0	0	0	0	0	0	0
SOCF	0	0	0	0	0	0	0	1	0	0	0	0
TCI	0	0	0	0	0	0	0	0	0	0	0	0
TOCI	0	0	0	0	0	0	0	0	0	0	0	0
WCI	0	0	0	0	0	0	0	0	0	0	0	0
<b>TOTAL</b>	<b>3</b>	<b>7</b>	<b>4</b>	<b>1</b>	<b>1</b>	<b>2</b>	<b>0</b>	<b>1</b>	<b>1</b>	<b>0</b>	<b>3</b>	<b>0</b>

AVG. SYSTEM	
POPULATION	
FOR YEAR	<b>45084</b> <b>44100</b> <b>44142</b> <b>46861</b> <b>49345</b> <b>50381</b> <b>50969</b> <b>51020</b> <b>50504</b> <b>49817</b> <b>50293</b> <b>50584</b>
RATE OF ESCAPES/ WALKAWAYS PER 1000 INMATES	<b>0.07</b> <b>0.16</b> <b>0.09</b> <b>0.02</b> <b>0.02</b> <b>0.04</b> <b>0.00</b> <b>0.02</b> <b>0.02</b> <b>0.00</b> <b>0.06</b> <b>0.00</b>

FIGURE 9. RATES OF ESCAPES/WALKAWAYS - CY 2003-2014

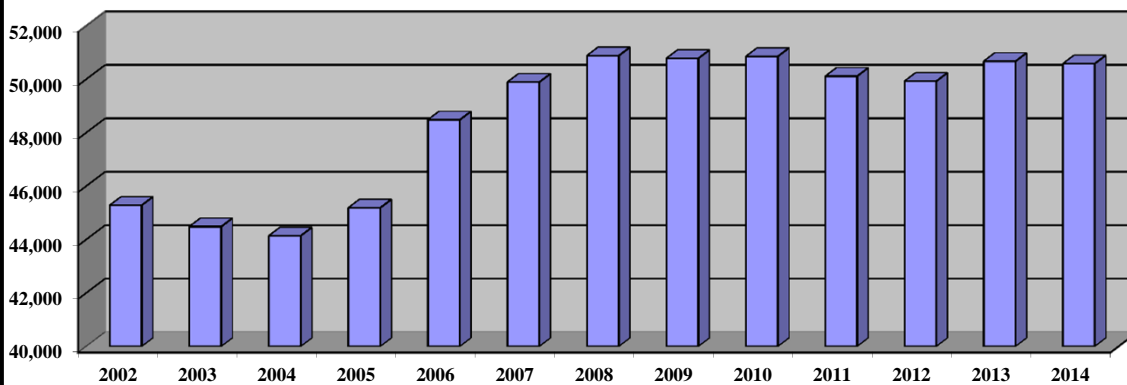


**INSTITUTION POPULATION TRENDS:**

**END OF THE YEAR INSTITUTIONAL POPULATION TREND FOR 12/31/02 THROUGH 12/31/14**

	2002	2003	2004	2005	2006	2007	2008	2009	2010	2011	2012	2013	2014
ACI/AOCI	1067	1239	1,301	1,323	1,331	1,329	1,317	1,378	1331	1533	1566	1620	1476
BECI	2051	2094	2,160	2,495	2,636	2,707	2,718	2,703	2689	2698	2697	2741	2700
CCI	2315	2633	2,695	2,720	2,890	2,824	2,904	2,908	2895	2622	2679	2828	2727
CMC Male	106	108	116	111	113	126	128	129	120	44	394	434	505
CMC Female	6	4	7	7	5	3	5	4	4	78	98	90	91
CRC	1900	1521	1,649	1,782	1,766	1,726	1,685	1,517	1586	1813	1833	1817	1688
DCI Male	468	415	418	420	481	474	468	815	785	0	0	0	0
DCI Female	0	0	0	0	0	0	0	0	0	870	863	925	907
FPRC Male	479	473	472	478	488	479	452	480	477	474	0	0	0
GCI	1343	1369	1,416	1,417	1,412	1,509	1,501	1,518	1520	1305	1951	1997	1977
HCI/HCF	418	455	465	461	462	484	486	482	475	479	443	0	0
LaECI	1387	1369	1,382	1,474	1,474	1,481	1,484	1,503	1499	1500	1789	1769	1780
LCI	1543	458	0	0	0	0	0	0	0	0	0	0	0
LECI	1706	1912	1,938	2,117	2,251	2,498	2,653	2,761	2768	2742	2578	2586	2161
LOCI	2033	2048	2,078	2,079	2,218	2,108	2,530	2,516	2507	2282	2251	2290	2279
LORCI	1899	1521	1,454	1,655	1,624	1,896	1,881	1,682	1679	1338	1591	1302	1596
MACI	2083	2113	1,945	2,009	2,076	2,314	2,195	2,307	2312	2302	2342	2327	2593
MANCI	2297	2349	2,374	2,207	2,295	2,382	2,460	2,519	2492	2482	2493	2516	2596
MCI	1694	1659	1,846	1,727	2,061	2,161	2,210	2,290	2293	2632	2571	2580	2540
MEPRC	318	337	339	338	341	332	323	0	0	0	0	0	0
NCCI	1889	2213	2,281	2,294	2,291	2,321	2,311	2,321	2332	2199	2610	2681	2652
NCCTF	540	532	547	601	606	657	649	692	687	657	0	0	0
NCI	2060	2086	2,095	2,307	2,308	2,337	2,480	2,462	2408	2510	2500	2560	2509
NEPRC	625	623	531	562	577	566	546	579	496	539	546	442	572
OAKCI Female	161	123	125	109	132	117	127	171	130	0	0	0	0
OAKCI Male	6	2	5	5	4	4	6	5	8	0	0	0	0
OCI	0	0	0	0	0	0	0	0	0	0	0	0	0
ORW Female	1767	1754	1,954	1,845	2,228	2,298	2,477	2,521	2591	2325	2350	2565	2522
OSP	491	468	455	560	519	517	541	520	562	644	466	457	451
PCI	2136	2149	2,084	1,995	2,345	2,342	2,419	2,048	2114	2176	2106	2195	2126
RCI	2248	2236	2,269	2,217	2,516	2,530	2,586	2,547	2583	2261	2049	2044	2236
RICI	2258	2254	2,316	2,307	2,464	2,531	2,522	2,533	2528	2568	2521	2546	2602
SCI	1383	1590	1,534	1,437	1,512	1,515	1,628	1,537	1553	1590	1583	2062	2034
SOCF	1382	1047	959	1,087	1,327	1,487	1,388	1,415	1470	1400	1352	1233	1242
TCI Male	1371	1380	964	941	971	957	952	1,047	1060	1063	1064	1520	1528
TCI Female	0	134	134	293	345	374	361	319	312	0	0	0	0
TOCI	779	791	792	750	1,083	1,113	1,093	1,148	1200	1575	1237	1143	1101
WCI	1075	1025	1042	1059	1330	1395	1398	1406	1391	1413	1405	1404	1392
<b>TOTAL</b>	<b>45284</b>	<b>44484</b>	<b>44142</b>	<b>45189</b>	<b>48482</b>	<b>49894</b>	<b>50884</b>	<b>50783</b>	<b>50857</b>	<b>50114</b>	<b>49928</b>	<b>50674</b>	<b>50583</b>

**FIGURE 10. INSTITUTION POPULATION TREND 12/31/2002- 12/31/2014**





**END OF THE YEAR INSTITUTIONAL POPULATION TREND FOR 12/31/90 THROUGH 12/31/2001**

	1990	1991	1992	1993	1994	1995	1996	1997	1998	1999	2000	2001
ACI/AOCI	975	1007	1105	1355	1481	1415	1336	1381	1397	1406	1175	1122
BECI	0	0	0	0	224	1891	2,283	2,433	2,533	2427	1981	2017
CCI	2,460	2,634	2,802	2,821	2,780	2621	2,580	2,714	2,731	2,244	2192	2187
CMC Male	0	0	0	139	150	154	149	150	140	151	101	99
CMC Female	0	0	0	7	6	4	6	4	4	2	2	4
CRC	1,423	2,223	2,207	2,318	2,204	2074	1,971	2,267	1,982	1,840	1777	1513
DCI	454	481	485	484	478	484	485	489	467	460	445	456
EDP	343	0	0	0	0	0	0	0	0	0	0	0
FPRC	1,012	354	364	429	435	500	489	475	453	407	394	436
GCI	0	1,161	1,289	1,435	1,596	1590	1,622	1,658	1,587	1,601	1358	1354
HCF	396	392	395	446	417	436	432	446	441	438	396	400
LaECI	0	0	0	0	0	0	0	0	0	0	1369	1382
LCI	1,848	1,909	1,902	1,954	2,051	2110	2,082	2,009	1,907	1,530	1500	1467
LECI	1,948	1,939	2,188	2,196	2,139	2198	2,105	2,273	2,221	1,976	1778	1666
LOCI	1,484	2,447	2,394	2,400	2,335	2366	1,896	1,877	1,901	1,885	1947	2057
LORCI	2,250	1,905	2,175	2,329	2,327	1863	2,003	2,062	2,053	1,606	1568	1467
MACI	1,696	1,942	2,069	2,312	2,315	2311	2,530	2,545	2,613	2,290	2060	1899
MANCI	1,411	2,119	2,341	2,455	2,320	2637	2,598	2,669	2,637	2,469	2286	2308
MCI	1,775	1,856	2,104	2,307	2,207	2093	2,109	21,111	2,206	1,918	1803	1763
MEPRC	0	0	0	0	337	349	324	347	340	306	305	292
NCCI	0	0	0	0	724	2274	2,216	2,316	2,314	2,258	1938	1916
NCCTF	0	0	0	0	0	0	0	0	0	0	549	542
NCI	0	0	0	0	0	0	1,452	2,377	2,344	1,854	1832	1763
NEPRC	340	491	611	659	613	645	633	643	592	546	569	606
OAKCI Female	0	0	0	0	0	0	9	7	7	6	144	175
OAKCI Male	0	0	0	0	97	229	162	163	173	158	4	10
OCI	2,135	2,266	2,257	2,280	2,340	2245	2,139	2,039	2,000	1,917	1908	1636
ORW Female	1,213	1,412	1,389	1,443	1,490	1594	1,642	1,682	1,830	1,845	1774	1696
ORW Male	0	0	0	249	209	0	0	0	0	0	0	0
OSP	0	0	0	0	0	0	0	0	492	643	593	512
PCI	1,536	1,792	1,912	1,942	1,942	1923	1,919	1,920	1,940	1,883	1785	1834
RCI	2,222	2,372	2,646	2,892	2,813	2618	2,767	2,797	2,805	2,398	2289	2202
RICI	0	0	0	0	0	0	0	0	102	2,267	2073	2016
SCI/SOTC	1,533	1,705	2,018	1,905	2,044	1751	1,819	1,742	1,726	1,679	1368	1352
SOCF	1,829	1,637	1,831	1,093	1,060	1076	1304	1,425	1,425	1,456	1435	1449
TCI MALE	0	0	83	948	973	1375	1,424	1,446	1,447	1,409	1327	1408
TCI FEMALE	0	0	0	0	0	0	0	0	0	0	0	0
TOCI	0	0	0	0	0	0	0	0	0	0	222	718
WCI	1218	1402	1424	1455	1502	1512	1476	1336	1361	1344	1258	1144
<b>TOTAL</b>	<b>31501</b>	<b>35446</b>	<b>37991</b>	<b>40253</b>	<b>41609</b>	<b>44338</b>	<b>45962</b>	<b>47808</b>	<b>48171</b>	<b>46619</b>	<b>45505</b>	<b>44868</b>

**FIGURE 11. INSTITUTION POPULATION TREND 12/31/1990-12/31/2001**

