



# Ohio Department of Rehabilitation and Correction

770 West Broad Street  
Columbus, OH 43222

Ted Strickland, Governor

[www.drc.ohio.gov](http://www.drc.ohio.gov)

Ernie L. Moore, Director

**FROM:** SENARATH DASSANAYAKA, SENIOR RESEARCHER  
BUREAU OF RESEARCH  
OFFICE OF POLICY

**DATE:** 5/26/2010

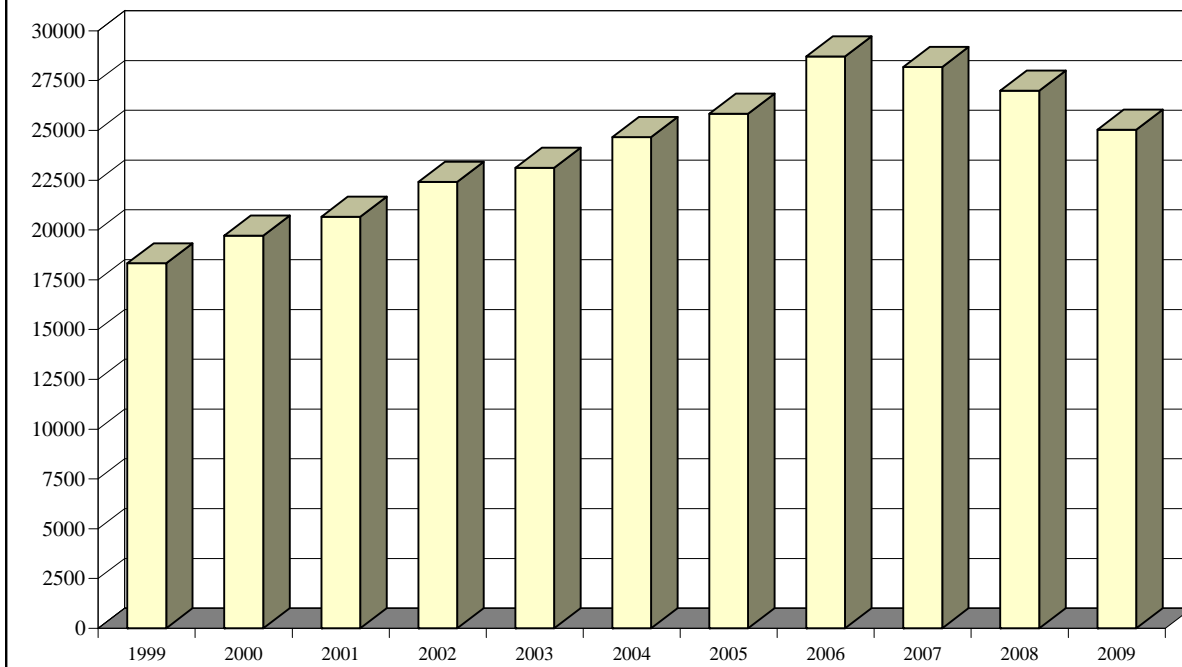
**SUBJECT:** CALENDAR YEAR 2009 SUMMARY OF INSTITUTION STATISTICS

***TOTAL COURT COMMITMENTS TO THE OHIO DEPARTMENT OF REHABILITATION AND CORRECTION:***

<b><i>OFFICIAL COMMITMENT TOTALS</i></b>			
CRC RECEPTION - MALE	12,458	MALE INTAKE	21,778
LORCI RECEPTION - MALE	9,320	FEMALE INTAKE	3,253
ORW RECEPTION - FEMALE	3,253	<b>TOTAL</b>	<b>25,031</b>
<b>TOTAL</b>	<b>25,031</b>		

<b><i>COURT COMMITMENTS TO THE DEPARTMENT CY 1999-2009</i></b>										
1999	2000	2001	2002	2003	2004	2005	2006	2007	2008	2009
18,325	19,721	20,669	22,411	23,126	24,662	25,841	28,714	28,178	26,993	<b>25,031</b>

**FIGURE 1. COURT COMMITMENTS TO THE DEPARTMENT CY 1999- 2009**



<b>NUMBER OF COMMITMENTS TO THE DEPARTMENT**</b>								
<b>CY 2009*</b>	<b>CRC MALE</b>	<b>LORCI MALE</b>	<b>MALE N</b>	<b>MALE %</b>	<b>ORW FEMALE</b>	<b>FEMALE %</b>	<b>TOTAL N</b>	<b>TOTAL %</b>
1ST COMMITMENT	6,402	4,228	10,630	48.81%	2,302	70.77%	12,932	51.66%
2ND COMMITMENT	2,748	2,082	4,830	22.18%	529	16.26%	5,359	21.41%
3 OR MORE COMMITME	3,308	3,010	6,318	29.01%	422	12.97%	6,740	26.93%
<b>TOTAL</b>	<b>12,458</b>	<b>9,320</b>	<b>21,778</b>	<b>100.00%</b>	<b>3,253</b>	<b>100.00%</b>	<b>25,031</b>	<b>100.00%</b>

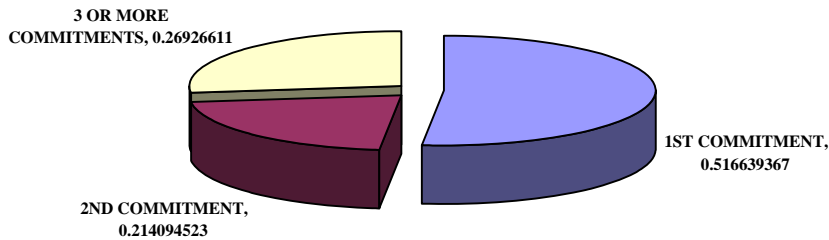
<b>NUMBER OF COMMITMENTS TO THE DEPARTMENT**</b>								
<b>CY 2008*</b>	<b>CRC MALE</b>	<b>LORCI MALE</b>	<b>MALE N</b>	<b>MALE %</b>	<b>ORW FEMALE</b>	<b>FEMALE %</b>	<b>TOTAL N</b>	<b>TOTAL %</b>
1ST COMMITMENT	7,076	4,413	11,489	48.91%	2,380	67.90%	13,869	51.38%
2ND COMMITMENT	2,985	2,152	5,137	21.87%	583	16.63%	5,720	21.19%
3 OR MORE COMMITME	3,591	3,271	6,862	29.21%	542	15.46%	7,404	27.43%
<b>TOTAL</b>	<b>13,652</b>	<b>9,836</b>	<b>23,488</b>	<b>100.00%</b>	<b>3,505</b>	<b>100.00%</b>	<b>26,993</b>	<b>100.00%</b>

<b>NUMBER OF COMMITMENTS TO THE DEPARTMENT**</b>								
<b>CY 2007*</b>	<b>CRC MALE</b>	<b>LORCI MALE</b>	<b>MALE N</b>	<b>MALE %</b>	<b>ORW FEMALE</b>	<b>FEMALE %</b>	<b>TOTAL N</b>	<b>TOTAL %</b>
1ST COMMITMENT	7,226	4,617	11,843	48.39%	2,555	68.94%	14,398	51.10%
2ND COMMITMENT	3,309	2,477	5,786	23.64%	638	17.22%	6,424	22.80%
3 OR MORE COMMITME	3,523	3,320	6,843	27.96%	513	13.84%	7,356	26.11%
<b>TOTAL</b>	<b>14,058</b>	<b>10,414</b>	<b>24,472</b>	<b>100.00%</b>	<b>3,706</b>	<b>100.00%</b>	<b>28,178</b>	<b>100.00%</b>

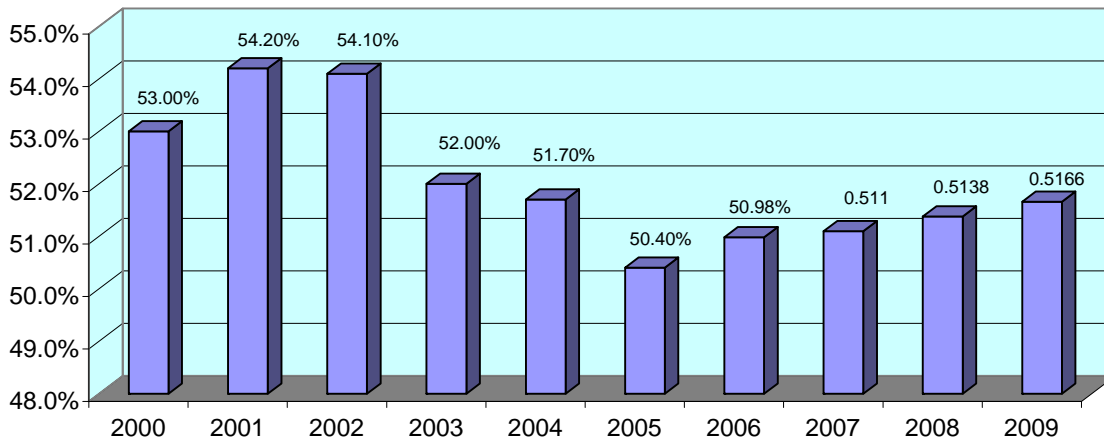
\* THIS TABLE IS PRODUCED FROM A DOTS SUMMARY OF PRIOR OHIO COMMITMENTS.

\*\* Percentages may not total 100 due to rounding

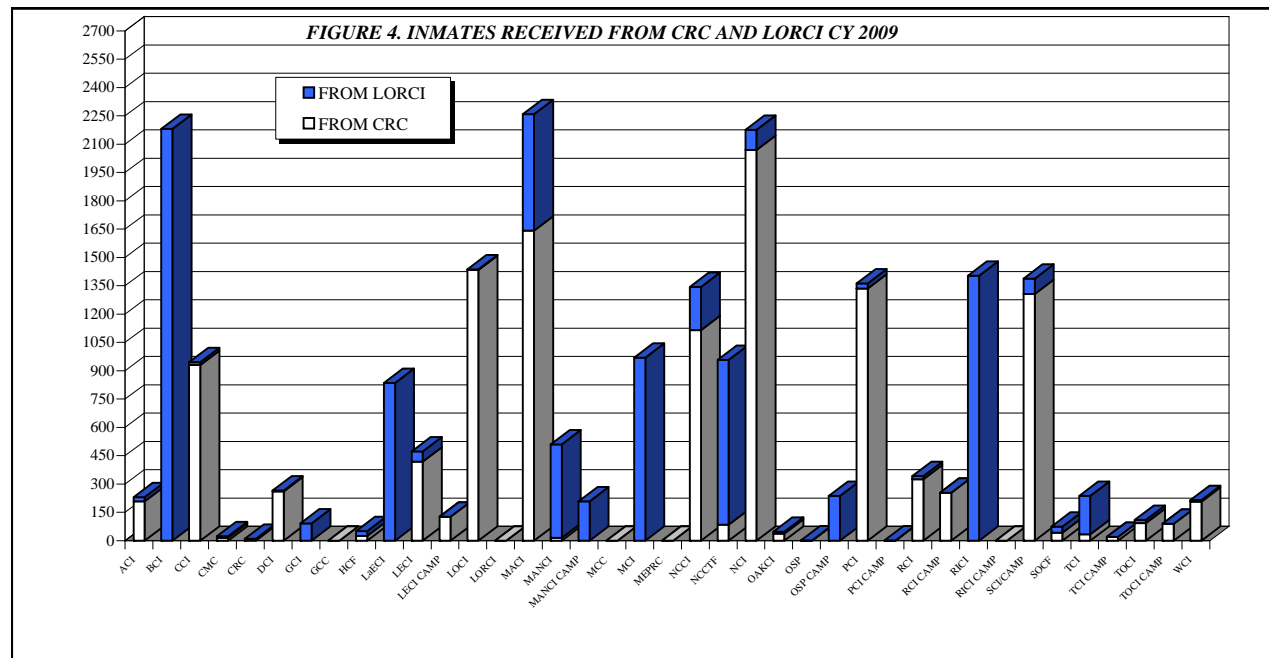
**FIGURE 2. DISTRIBUTION OF COURT COMMITMENTS CY 2009**



**FIGURE 3. PERCENT OF INMATES SERVING A FIRST COMMITMENT  
CY 2000-2009**



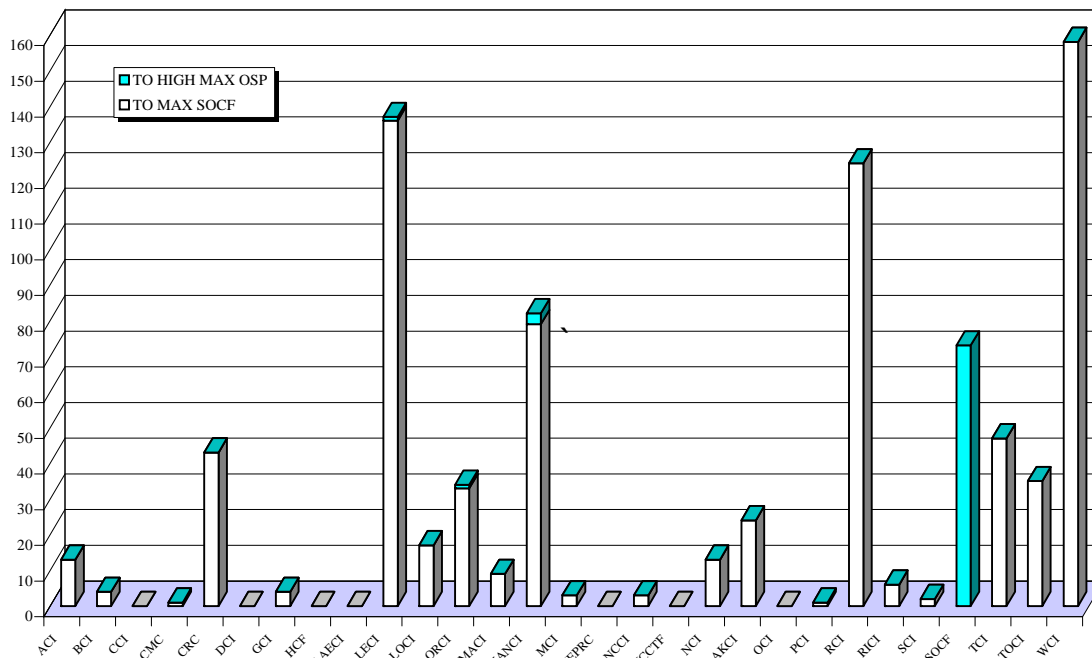
<b>INMATE TRANSFERS FROM MALE RECEPTION CENTERS</b>								
	<b>FROM CRC RECEPTION TO:</b>				<b>FROM LORCI RECEPTION TO:</b>			
	<b>2009</b>	<b>2008</b>	<b>2007</b>	<b>2006</b>	<b>2009</b>	<b>2008</b>	<b>2007</b>	<b>2006</b>
ACI	208	269	282	258	22	34	39	55
BCI	0	0	0	1	2,182	2,114	2,265	2,101
CCI	930	1,010	1,109	1,246	16	16	49	41
CMC	16	5	6	5	8	3	2	3
CRC	0	0	0	0	11	9	22	30
DCI	261	292	158	148	5	1	1	3
GCI	0	1	0	0	91	72	93	164
GCC	0	0	0	0	0	0	0	18
HCI	25	79	74	70	26	54	82	61
LAECI	0	0	0	0	836	837	1,047	1,035
LECI	418	387	377	367	55	61	75	14
LECI CAMP	127	160	263	310	0	0	0	0
LOCI	1,434	1,883	1,239	1,392	3	104	41	1
LORCI	0	0	0	0	0	56	13	21
MACI	1,642	1,597	1,912	1,764	618	574	616	655
MANCI	15	29	57	42	496	522	350	752
MANCI CAMP	0	0	0	5	209	400	409	143
MCC	0	0	0	7	0	4	1	158
MCI	0	19	3	24	969	1,273	1,681	1,633
MEPRC	0	249	431	437	0	0	0	0
NCCI	1,115	985	1,235	1,091	229	154	67	67
NCCTF	84	120	125	108	873	816	918	939
NCI	2,069	1,606	2,214	2,211	107	540	2	199
OCF	37	31	49	42	10	5	7	4
OSP	0	4	2	3	1	2	58	360
OSP CAMP	0	0	0	0	237	304	308	83
PCI	1,336	1,729	1,764	1,568	26	62	106	301
PCI CAMP	0	0	0	0	1	0	0	0
RCI	326	393	552	1,080	16	12	37	55
RCI CAMP	254	271	348	380	0	0	0	0
RICI	0	1	3	18	1,404	1,426	1,728	1,697
RICI CAMP	0	0	0	0	0	0	0	0
SCI/CAMPREAMS	1,307	1,591	1,615	1,524	82	80	47	32
SOCF	42	49	67	53	32	23	52	39
TCI	34	1	7	3	203	162	162	178
TCI CAMP	20	0	5	0	0	0	0	0
TOCI	93	118	114	107	18	37	19	146
TOCI CAMP	90	131	150	166	0	0	0	0
WCI	206.0	249.0	298.0	214.0	10.0	4.0	7.0	8.0
<b>TOTAL</b>	<b>12,089</b>	<b>13,259</b>	<b>14,459</b>	<b>14,644</b>	<b>8,796</b>	<b>9,761</b>	<b>10,304</b>	<b>10,996</b>



**DISCIPLINARY AND ADMINISTRATIVE TRANSFERS**

	FROM LESSER CUSTODY TO:				FROM HIGHER TO LESSER CUSTODY			
	LEVEL 5 (OSP)		LEVEL 4 (SOCF)		LEVEL 5 (OSP)		LEVEL 4 (SOCF)	
	2009	2008	2009	2008	2009	2008	2009	2008
ACI	0	0	13	3	0	0	1	1
BCI	0	0	4	10	0	0	0	5
CCI	0	0	0	3	0	0	1	3
CMC	0	0	1	0	1	0	2	0
CRC	0	3	43	46	3	2	7	3
DCI	0	0	0	0	0	0	2	0
GCI	0	0	4	0	0	0	0	0
HCI	0	0	0	0	0	0	0	1
LaECI	0	0	0	0	0	0	0	0
LECI	1	5	136	85	0	5	34	84
LOCI	0	0	17	12	0	0	8	2
LORCI	1	1	33	26	0	0	2	0
MACI	0	0	9	6	0	0	10	5
MANCI	3	11	79	80	3	3	35	29
MCI	0	0	3	5	0	1	9	4
MEPRC	0	0	0	0	0	0	0	0
NCCI	0	0	3	2	0	0	3	1
NCCTF	0	0	0	0	0	0	0	0
NCI	0	0	13	23	1	0	6	11
OCF	0	0	24	16	0	0	47	26
OSP	0	0	0	3	0	0	0	0
PCI	0	1	1	1	0	0	3	1
RCI	0	0	124	63	5	3	46	43
RICI	0	0	6	2	0	0	1	0
SCI	0	0	2	5	0	0	2	1
SOCF	73	64	0	0	40	32	0	0
TCI	0	1	47	21	10	12	62	25
TOCI	0	2	35	12	17	7	80	33
WCI	0	3	158	134	6	6	116	107
<b>TOTAL</b>	<b>78</b>	<b>91</b>	<b>755</b>	<b>558</b>	<b>86</b>	<b>71</b>	<b>477</b>	<b>385</b>

**FIGURE 5. TRANSFERS TO LEVEL 5 AND LEVEL 4 CUSTODY IN CY 2009**

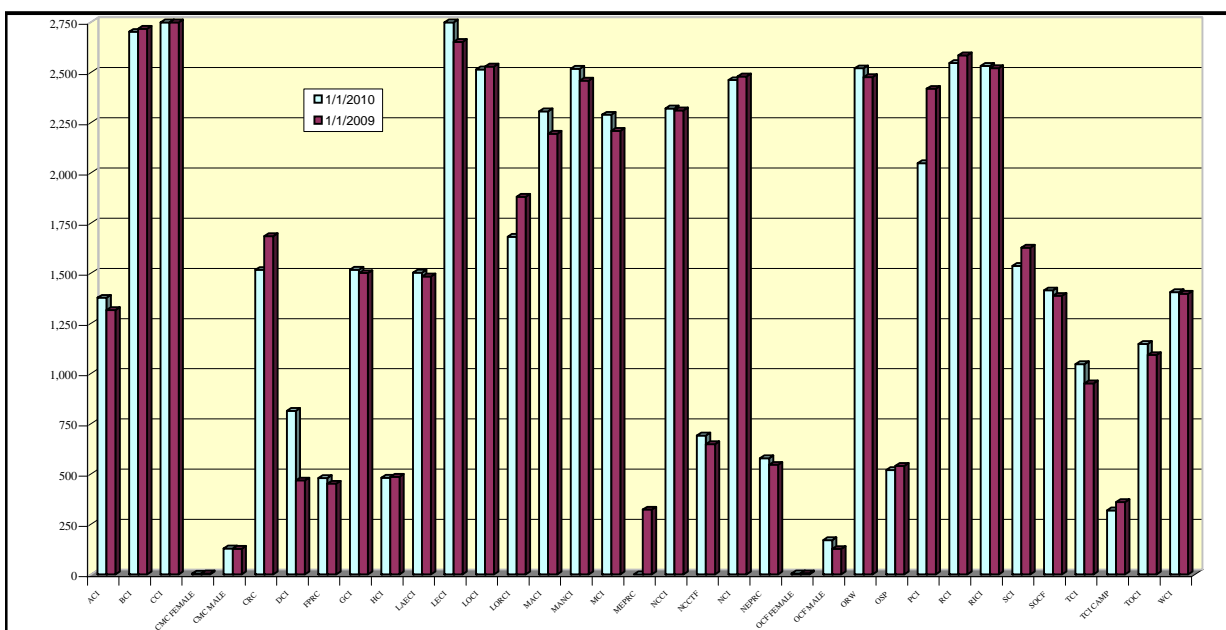


**END OF CALENDAR YEAR INSTITUTIONAL POPULATION COUNT:**

<b>INSTITUTION POPULATION TREND (PREVIOUS YEAR COMPARISON)</b>					
		<b>1/1/2010</b>	<b>1/1/2009</b>	<b>DIFFERENCE</b>	
ACI	(Allen Correctional Institution)	1,378	1,317	61	4.6%
BCI	(Belmont Correctional Institution)	2,703	2,718	-15	-0.6%
CCI	(Chillicothe Correctional Institution)	2,908	2,904	4	0.1%
CMC MALE	(Correctional Medical Center)	129	128	1	0.8%
CRC	(Correctional Reception Center)	1,517	1,685	-168	-10.0%
DCI	(Dayton Correctional Institution)	815	468	347	74.1%
GCI	(Grafton Correctional Institution)	1,518	1,501	17	1.1%
HCI	(Hocking Correctional Institution)	482	486	-4	-0.8%
LaECI	(Lake Erie Correctional Institution)	1,503	1,484	19	1.3%
LECI	(Lebanon Correctional Institution)	2,761	2,653	108	4.1%
LOCI	(London Correctional Institution)	2,516	2,530	-14	-0.6%
LORCI	(Lorain Correctional Institution)	1,682	1,881	-199	-10.6%
MACI	(Madison Correctional Institution)	2,307	2,195	112	5.1%
MANCI	(Mansfield Correctional Institution)	2,519	2,460	59	2.4%
MCI	(Marion Correctional Institution)	2,290	2,210	80	3.6%
MEPRC	(Montgomery Education & Pre-Release Center)	0	323	-323	-100.0%
NCCI	(North Central Correctional Institution)	2,321	2,311	10	0.4%
NCCTF	(North Coast Correctional Treatment Facility)	692	649	43	6.6%
NCI	(Noble Correctional Institution)	2,462	2,480	-18	-0.7%
OCF MALE	(Oakwood Correctional Facility)	171	127	44	34.6%
OSP	(Ohio State Penitentiary)	520	541	-21	-3.9%
PCI	(Pickaway Correctional Institution)	2,048	2,419	-371	-15.3%
RCI	(Ross Correctional Institution)	2,547	2,586	-39	-1.5%
RICI	(Richland Correctional Institution)	2,533	2,522	11	0.4%
SCI	(Southeastern Correctional Institution)	1,537	1,628	-91	-5.6%
SOCF	(Southern Ohio Correctional Facility)	1,415	1,388	27	1.9%
TCI	(Trumbull Correctional Institution)	1,047	952	95	10.0%
TOCI	(Toledo Correctional Institution)	1,148	1,093	55	5.0%
WCI	(Warren Correctional Institution)	1,406	1,398	8	0.6%
<b>MALE TOTAL</b>		<b>46,875</b>	<b>47,037</b>	<b>-162</b>	<b>-0.3%</b>
<b>CMC FEMAL</b> (Correctional Medical Center)		<b>4</b>	<b>5</b>	<b>-1</b>	<b>-20.0%</b>
FPRC (Franklin Pre-Release Center)		480	452	28	6.2%
NEPRC (Northeast Pre-Release Center)		579	546	33	6.0%
OCF FEMAL (Oakwood Correctional Facility)		5	6	-1	-16.7%
ORW (Ohio Reformatory for Women)		2,521	2,477	44	1.8%
TCI CAMP (Trumbull Corr. Institution Camp)		319	361	-42	-11.6%
<b>FEMALE TOTAL</b>		<b>3,908</b>	<b>3,847</b>	<b>61</b>	<b>1.6%</b>
				0	#DIV/0!
<b>COMBINED MALE / FEMALE TOTAL</b>		<b>50,783</b>	<b>50,884</b>	<b>-101</b>	<b>-0.2%</b>

TOTAL

**FIGURE 6. COMPARISON OF INSTITUTION POPULATION COUNT ON 1/1/10 and 1/1/09**



**RELEASES AND RETURNS:**

<b>INSTITUTIONAL STATISTICS</b>					
	CY 2009	CY 2009	CY 2009	CY 2008	CY 2007
	Female	Male	TOTAL	TOTAL	TOTAL
<b>RELEASED BY:</b>					
SUSPENDED SENTENCE	1	6	7	0	2
VACATED SENTENCE	0	3	3	4	2
REGULAR PAROLE	36	935	971	1,238	1,572
SHOCK PAROLE	0	0	0	0	1
JUDICIAL RELEASE	605	1,688	2,293	2,178	2,035
POST RELEASE CONTROL	707	6,851	7,558	8,616	9,212
TRANSITIONAL CONTROL	206	2,038	2,244	2,394	2,368
EXPIRATION OF SENTENCE	48	228	276	234	233
END OF STATED TERM	1,620	11,085	12,705	13,249	13,436
APPEALS BOND	3	26	29	18	26
ESCAPES (numbers provided by the Office of Prisons)	0	0	0	2	1
DEATHS (numbers provided by the Bureau of Medical Services)	7	118	125	106	126
<b>TOTAL RELEASED</b>	<b>3,233</b>	<b>22,978</b>	<b>26,211</b>	<b>28,039</b>	<b>29,014</b>

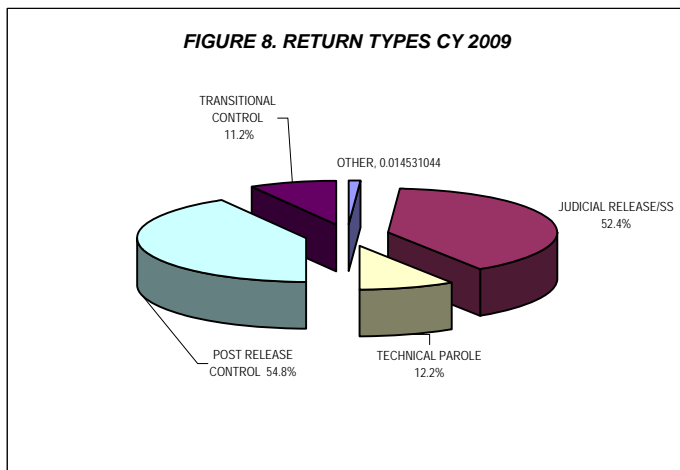
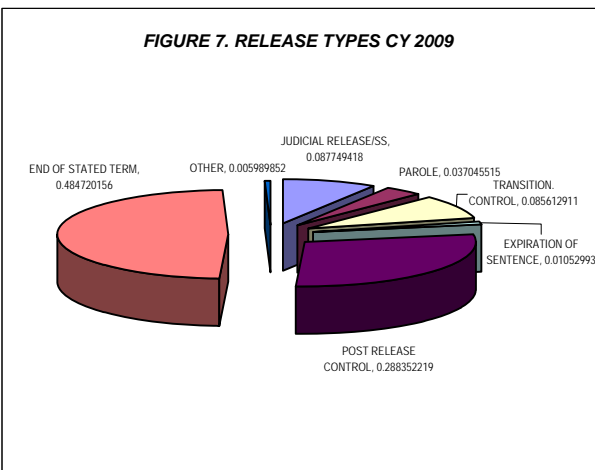
<b>RETURNED BY:</b>					
PAROLE VIOLATION (TECH.) <sup>1</sup>	6	179	185	343	492
JUDICIAL RELEASE VIOLATION	130	663	793	905	907
POST RELEASE CONTROL VIOLATION <sup>1</sup>	39	790	829	1,362	1,452
TRANSITIONAL CONTROL VIOLATION	28	141	169	169	188
REACTIVATED SUSPENDED SENTENCE	0	5	5	6	9
ESCAPES RETURNED	0	9	9	14	1
APPEALS BOND	1	12	13	23	13
<b>TOTAL RETURNED</b>	<b>204</b>	<b>1,310</b>	<b>1,514</b>	<b>2,822</b>	<b>3,062</b>

<sup>1</sup> Numbers taken from DOTS. PRC and Parole offenders being held at reception prior to a violation hearing have caused errors in the monthly report totals, so they are not summed for this report.

<b>PAROLE VIOLATORS RECOMMISSIONED<sup>2</sup></b>	<b>7</b>	<b>270</b>	<b>277</b>	<b>417</b>	<b>574</b>
<b>PRC FELONY VIOLATOR<sup>2</sup></b>	<b>50</b>	<b>1,118</b>	<b>1,168</b>	<b>1,695</b>	<b>*</b>

<sup>2</sup> PVR and PRC Felony Violator numbers from DOTS.

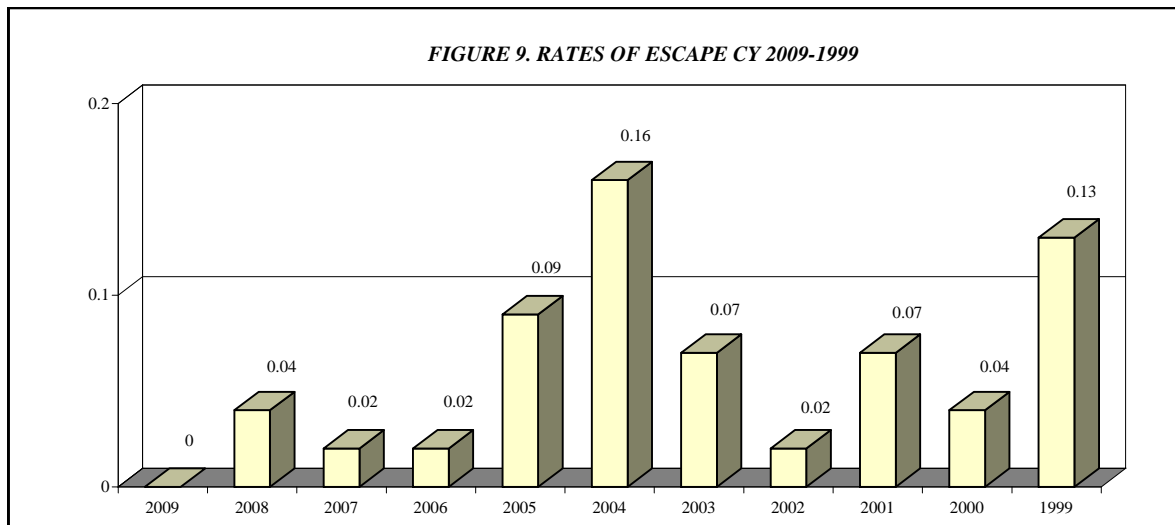
\* PRC Felony Violator counts are being determined in an improved way for CY 2008 and after. Revised numbers for earlier years will be published later.



\*Other includes the following releases: vacated sentences, appeals bond, escapes and deaths.

\*\*Other includes returns for the following: return from appeals bond and captured escapees.

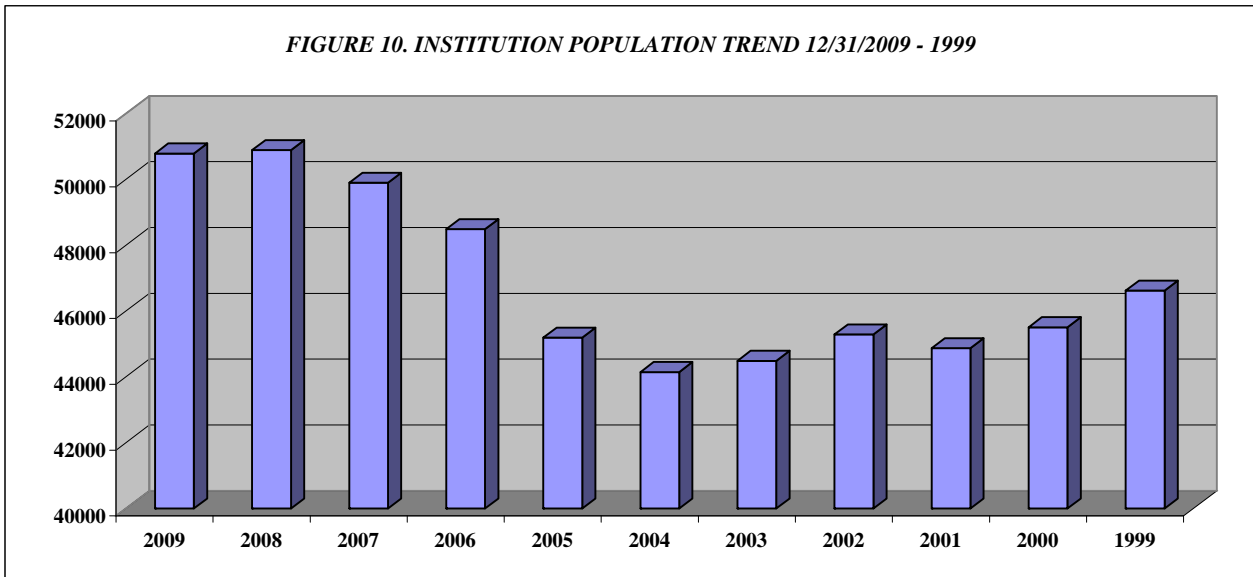
<b>ESCAPES AND RATES OF ESCAPE</b>											
	2009	2008	2007	2006	2005	2004	2003	2002	2001	2000	1999
ACI	0	0	0	0	0	0	0	0	0	0	0
BCI	0	0	0	0	0	0	0	0	0	0	0
CCI	0	0	0	0	0	0	0	0	0	0	2
CMC	0	0	0	0	0	0	0	0	0	0	0
CRC	0	0	0	0	0	0	0	0	0	0	0
DCI	0	0	0	0	1	0	0	0	0	0	0
FPRC	0	0	0	0	0	0	0	0	0	0	0
GCI	0	0	0	0	0	0	0	0	1	0	0
HCI	0	0	0	0	0	0	0	0	0	0	0
LAECI	0	0	0	0	0	0	0	0	0	0	0
LCI	0	0	0	0	0	0	0	0	0	0	0
LECI	0	0	0	1	0	0	0	0	1	0	0
LOCI	0	0	0	0	0	0	0	0	0	2	0
LORCI	0	1	0	0	0	0	0	0	0	0	0
MACI	0	0	0	0	0	0	0	0	0	0	1
MANCI	0	0	0	0	0	2	0	0	0	0	1
MCI	0	0	0	0	0	0	0	0	0	0	0
MEPRC	0	0	0	0	0	1	0	0	0	0	0
NEPRC	0	0	0	0	0	0	0	0	0	0	0
NCCI	0	0	0	0	0	0	0	0	0	0	0
NCCTF	0	0	0	0	0	0	0	0	0	0	0
NCI	0	0	0	0	0	0	0	0	0	0	0
OCF	0	0	0	0	0	0	0	0	0	0	0
ORW	0	0	0	0	0	0	0	0	0	0	0
OSP	0	0	0	0	1	0	0	0	0	0	0
PCI	0	0	0	0	2	2	1	0	0	0	1
RCI	0	1	0	0	0	2	1	0	0	0	0
RICI	0	0	0	0	0	0	0	0	0	0	0
SCI	0	0	1	0	0	0	1	1	1	0	1
SOCF	0	0	0	0	0	0	0	0	0	0	0
TCI	0	0	0	0	0	0	0	0	0	0	0
TOCI	0	0	0	0	0	0	0	0	0	0	0
WCI	0	0	0	0	0	0	0	0	0	0	0
	0										
<b>TOTAL</b>	<b>0</b>	<b>2</b>	<b>1</b>	<b>1</b>	<b>4</b>	<b>7</b>	<b>3</b>	<b>1</b>	<b>3</b>	<b>2</b>	<b>6</b>
<b>AVG. SYSTEM POPULATION FOR YEAR</b>											
	50,969	50,381	49,345	46,861	44,142	44,100	45,084	45,005	45,196	46,196	47,039
<b>RATE OF ESCAPE PER 1000 INMATE</b>											
	0.00	0.04	0.02	0.02	0.09	0.16	0.07	0.02	0.07	0.04	0.13



**INSTITUTION POPULATION TRENDS:**

<b>END OF THE YEAR INSTITUTIONAL POPULATION TREND FOR 12/31/09 THROUGH 12/31/99</b>											
	<b>2009</b>	<b>2008</b>	<b>2007</b>	<b>2006</b>	<b>2005</b>	<b>2004</b>	<b>2003</b>	<b>2002</b>	<b>2001</b>	<b>2000</b>	<b>1999</b>
ACI	1,378	1,317	1,329	1,331	1,323	1,301	1,239	1,067	1,122	1,175	1,406
BCI	2,703	2,718	2,707	2,636	2,495	2,160	2,094	2,051	2,017	1,981	2,427
CCI	2,908	2,904	2,824	2,890	2,720	2,695	2,633	2,315	2,187	2,192	2,244
CMC Male	129	128	126	113	111	116	108	106	99	101	151
CMC Female	4	5	3	5	7	7	4	6	4	2	2
CRC	1,517	1,685	1,726	1,766	1,782	1,649	1,521	1,900	1,513	1,777	1,840
DCI	815	468	474	481	420	418	415	468	456	445	460
FPRC	480	452	479	488	478	472	473	479	436	394	407
GCI	1,518	1,501	1,509	1,412	1,417	1,416	1,369	1,343	1,354	1,358	1,601
HCI/HCF	482	486	484	462	461	465	455	418	400	396	438
LaECI	1,503	1,484	1,481	1,474	1,474	1,382	1,369	1,387	1,382	1,369	0
LCI	0	0	0	0	0	0	458	1,543	1,467	1,500	1,530
LECI	2,761	2,653	2,498	2,251	2,117	1,938	1,912	1,706	1,666	1,778	1,976
LOCI	2,516	2,530	2,108	2,218	2,079	2,078	2,048	2,033	2,057	1,947	1,885
LORCI	1,682	1,881	1,896	1,624	1,655	1,454	1,521	1,899	1,467	1,568	1,606
MACI	2,307	2,195	2,314	2,076	2,009	1,945	2,113	2,083	1,899	2,060	2,290
MANCI	2,519	2,460	2,382	2,295	2,207	2,374	2,349	2,297	2,308	2,286	2,469
MCI	2,290	2,210	2,161	2,061	1,727	1,846	1,659	1,694	1,763	1,803	1,918
MEPRC	0	323	332	341	338	339	337	318	292	305	306
NCCI	2,321	2,311	2,321	2,291	2,294	2,281	2,213	1,889	1,916	1,938	2,258
NCCTF	692	649	657	606	601	547	532	540	542	549	0
NCI	2,462	2,480	2,337	2,308	2,307	2,095	2,086	2,060	1,763	1,832	1,854
NEPRC	579	546	566	577	562	531	623	625	606	569	546
OCF Male	171	127	117	132	109	125	123	161	175	144	158
OCF Female	5	6	4	4	5	5	2	6	10	4	6
OCI	0	0	0	0	0	0	0	0	1,636	1,908	1,917
ORW Female	2,521	2,477	2,298	2,228	1,845	1,954	1,754	1,767	1,696	1,774	1,845
ORW Male	0	0	0	0	0	0	0	0	0	0	0
OSP	520	541	517	519	560	455	468	491	512	593	643
PCI	2,048	2,419	2,342	2,345	1,995	2,084	2,149	2,136	1,834	1,785	1,883
RCI	2,547	2,586	2,530	2,516	2,217	2,269	2,236	2,248	2,202	2,289	2,398
RICI	2,533	2,522	2,531	2,464	2,307	2,316	2,254	2,258	2,016	2,073	2,267
SCI	1,537	1,628	1,515	1,512	1,437	1,534	1,590	1,383	1,352	1,368	1,679
SOCF	1,415	1,388	1,487	1,327	1,087	959	1,047	1,382	1,449	1,435	1,456
TCI Male	1,047	952	957	971	941	964	1,380	1,371	1,408	1,327	1,409
TCI Female	319	361	374	345	293	134	134	0	0	0	0
TOCI	1,148	1,093	1,113	1,083	750	792	791	779	718	222	0
WCI	1,406	1,398	1,395	1,330	1,059	1,042	1,025	1,075	1,144	1,258	1,344
<b>TOTAL</b>	<b>50,783</b>	<b>50,884</b>	<b>49,894</b>	<b>48,482</b>	<b>45,189</b>	<b>44,142</b>	<b>44,484</b>	<b>45,284</b>	<b>44,868</b>	<b>45,505</b>	<b>46,619</b>

**FIGURE 10. INSTITUTION POPULATION TREND 12/31/2009 - 1999**





<b>END OF THE YEAR INSTITUTIONAL POPULATION TREND FOR 12/31/99 THROUGH 12/31/89</b>											
	<b>1999</b>	<b>1998</b>	<b>1997</b>	<b>1996</b>	<b>1995</b>	<b>1994</b>	<b>1993</b>	<b>1992</b>	<b>1991</b>	<b>1990</b>	<b>1989</b>
ACI	1,406	1,397	1,381	1,336	1415	1,481	1,355	1,105	1,007	975	885
BCI	2427	2,533	2,433	2,283	1891	224	0	0	0	0	0
CCI	2,244	2,731	2,714	2,580	2621	2,780	2,821	2,802	2,634	2,460	2,217
CMC Male	151	140	150	149	154	150	139	0	0	0	0
CMC Female	2	4	4	6	4	6	7	0	0	0	0
CRC	1,840	1,982	2,267	1,971	2074	2,204	2,318	2,207	2,223	1,423	1,540
DCI	460	467	489	485	484	478	484	485	481	454	469
EDP	0	0	0	0	0	0	0	0	0	343	385
FPRC	407	453	475	489	500	435	429	364	354	1,012	925
GCI	1,601	1,587	1,658	1,622	1590	1,596	1,435	1,289	1,161	0	0
HCI/HCF	438	441	446	432	436	417	446	395	392	396	321
LaECI	0	0	0	0	0	0	0	0	0	0	0
LCI	1,530	1,907	2,009	2,082	2110	2,051	1,954	1,902	1,909	1,848	1,726
LECI	1,976	2,221	2,273	2,105	2198	2,139	2,196	2,188	1,939	1,948	1,935
LOCI	1,885	1,901	1,877	1,896	2366	2,335	2,400	2,394	2,447	1,484	0
LORCI	1,606	2,053	2,062	2,003	1863	2,327	2,329	2,175	1,905	2,250	2,173
MACI	2,290	2,613	2,545	2,530	2311	2,315	2,312	2,069	1,942	1,696	1,697
MANCI	2,469	2,637	2,669	2,598	2637	2,320	2,455	2,341	2,119	1,411	0
MCI	1,918	2,206	21,111	2,109	2093	2,207	2,307	2,104	1,856	1,775	1,937
MEPRC	306	340	347	324	349	337	0	0	0	0	0
NCCI	2,258	2,314	2,316	2,216	2274	724	0	0	0	0	0
NCCTF	0	0	0	0	0	0	0	0	0	0	0
NCI	1,854	2,344	2,377	1,452	0	0	0	0	0	0	0
NEPRC	546	592	643	633	645	613	659	611	491	340	413
OCF Female	158	173	7	9	0	0	0	0	0	0	0
OCF Male	6	7	163	162	229	97	0	0	0	0	0
OCI	1,917	2,000	2,039	2,139	2245	2,340	2,280	2,257	2,266	2,135	2,053
ORW Female	1,845	1,830	1,682	1,642	1594	1,490	1,443	1,389	1,412	1,213	1,569
ORW Male	0	0	0	0	0	209	249	0	0	0	0
OSP	643	492	0	0	0	0	0	0	0	0	2,131
PCI	1,883	1,940	1,920	1,919	1923	1,942	1,942	1,912	1,792	1,536	1,518
RCI	2,398	2,805	2,797	2,767	2618	2,813	2,892	2,646	2,372	2,222	1,920
RICI	2,267	102	0	0	0	0	0	0	0	0	0
SCI/SOTC	1,679	1,726	1,742	1,819	1751	2,044	1,905	2,018	1,705	1,533	1,466
SOCF	1,456	1,425	1,425	1304	1076	1,060	1,093	1,831	1,637	1,829	2,133
TCI MALE	1,409	1,447	1,446	1,424	1375	973	948	83	0	0	0
TCI FEMALE	0	0	0	0	0	0	0	0	0	0	0
TOCI	0	0	0	0	0	0	0	0	0	0	0
WCI	1,344	1,361	1,336	1,476	1,512	1,502	1,455	1,424	1,402	1,218	887
<b>TOTAL</b>	<b>46,619</b>	<b>48,171</b>	<b>47,808</b>	<b>45,962</b>	<b>44,338</b>	<b>41,609</b>	<b>40,253</b>	<b>37,991</b>	<b>35,446</b>	<b>31,501</b>	<b>30,300</b>

**FIGURE 11. INSTITUTION POPULATION TREND 1999-1989**

