



# Ohio Department of Rehabilitation and Correction

1050 Freeway Drive North  
Columbus, Ohio 43229

Bob Taft, Governor

[www.drc.state.oh.us](http://www.drc.state.oh.us)

Reginald A. Wilkinson, Director

**TO:** ALL CONCERNED  
**FROM:** CORETTA PETTWAY & SENARATH DASSANAYAKA, RESEARCHERS  
 BUREAU OF RESEARCH  
 OFFICE OF POLICY  
**DATE:** 4/18/2003  
**SUBJECT:** FISCAL YEAR 2002 SUMMARY OF INSTITUTION STATISTICS

**TOTAL COURT COMMITMENTS TO THE OHIO DEPARTMENT OF REHABILITATION AND CORRECTION:**

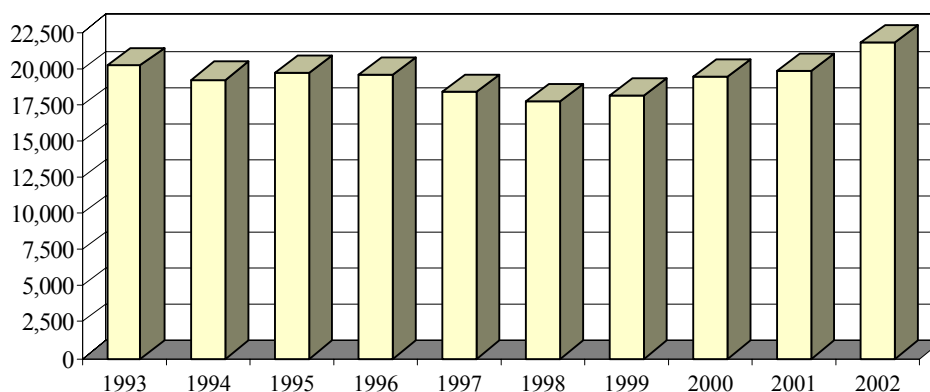
<b>OFFICIAL COMMITMENT TOTALS</b>			
CRC RECEPTION - MALE	10,001	MALE INTAKE	19,250
LORCI RECEPTION - MALE	8,796	FEMALE INTAKE	2,537
ORW RECEPTION - FEMALE	2,537	<b>TOTAL</b>	<b>21,787</b>
RECEIVED AT OTHER INSTITUTIONS	453		
<b>TOTAL</b>	<b>21,787</b>		

<b>SENATE BILL 2 COMMITMENTS*</b>		
	MOST SERIOUS OFFENSE IS A SB2 OFFENSE	MOST SERIOUS OFFENSE IS A PRE-SB2 OFFENSE
MALE INTAKE	18,944	306
FEMALE INTAKE	2,459	78
<b>TOTAL</b>	<b>21,403</b>	<b>384</b>

\* THESE TOTALS ARE INCLUDED IN THE OFFICIAL COMMITMENT TOTALS.

<b>COURT COMMITMENTS TO THE DEPARTMENT FY 1993-2002</b>									
1993	1994	1995	1996	1997	1998	1999	2000	2001	2002
20,199	19,243	19,669	19,566	18,404	17,681	18,165	19,418	19,801	21,787

**FIGURE 1. COURT COMMITMENTS TO THE DEPARTMENT FY 1993-2002**



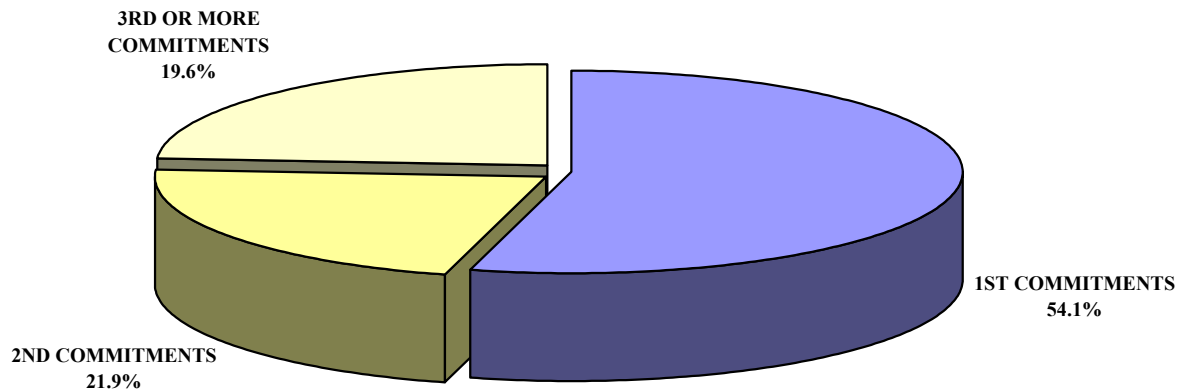
<b>NUMBER OF COMMITMENTS TO THE DEPARTMENT</b>								
<b>FY 2002*</b>	<b>CRC MALE</b>	<b>LORCI MALE</b>	<b>MALE N</b>	<b>MALE %</b>	<b>ORW FEMALE</b>	<b>FEMALE %</b>	<b>TOTAL N</b>	<b>TOTAL %</b>
1ST COMMITMENTS	5,662	4,454	10,116	52.6%	1681	66.3%	11,797	54.1%
2ND COMMITMENTS	2,213	2,144	4,357	22.6%	413	16.3%	4,770	21.9%
3RD OR MORE COMMIT.	2,229	2,548	4,777	24.8%	443	17.5%	5,220	24.0%
<b>TOTAL</b>	<b>10,104</b>	<b>9,146</b>	<b>19,250</b>	<b>100.0%</b>	<b>2,537</b>	<b>100.0%</b>	<b>21,787</b>	<b>100.0%</b>

<b>NUMBER OF COMMITMENTS TO THE DEPARTMENT</b>								
<b>FY 2001*</b>	<b>CRC MALE</b>	<b>LORCI MALE</b>	<b>MALE N</b>	<b>MALE %</b>	<b>ORW FEMALE</b>	<b>FEMALE %</b>	<b>TOTAL N</b>	<b>TOTAL %</b>
1ST COMMITMENTS	5,166	4,282	9,448	54.3%	1,511	63.2%	10,959	55.3%
2ND COMMITMENTS	1,952	1,903	3,855	22.1%	443	18.5%	4,298	21.7%
3RD OR MORE COMMIT.	2,008	2,101	4,109	23.6%	435	18.2%	4,544	22.9%
<b>TOTAL</b>	<b>9,126</b>	<b>8,286</b>	<b>17,412</b>	<b>100.0%</b>	<b>2,389</b>	<b>100.0%</b>	<b>19,801</b>	<b>100.0%</b>

<b>NUMBER OF COMMITMENTS TO THE DEPARTMENT</b>								
<b>FY 2000*</b>	<b>CRC MALE</b>	<b>LORCI MALE</b>	<b>MALE N</b>	<b>MALE %</b>	<b>ORW FEMALE</b>	<b>FEMALE %</b>	<b>TOTAL N</b>	<b>TOTAL %</b>
1ST COMMITMENTS	5,200	4,351	9,551	55.9%	1,511	65.1%	11,062	57.0%
2ND COMMITMENTS	1,935	1,910	3,845	22.5%	415	17.9%	4,260	21.9%
3RD OR MORE COMMIT.	1,780	1,922	3,702	21.7%	394	17.0%	4,096	21.1%
<b>TOTAL</b>	<b>8,915</b>	<b>8,183</b>	<b>17,098</b>	<b>100.0%</b>	<b>2,320</b>	<b>100.0%</b>	<b>19,418</b>	<b>100.0%</b>

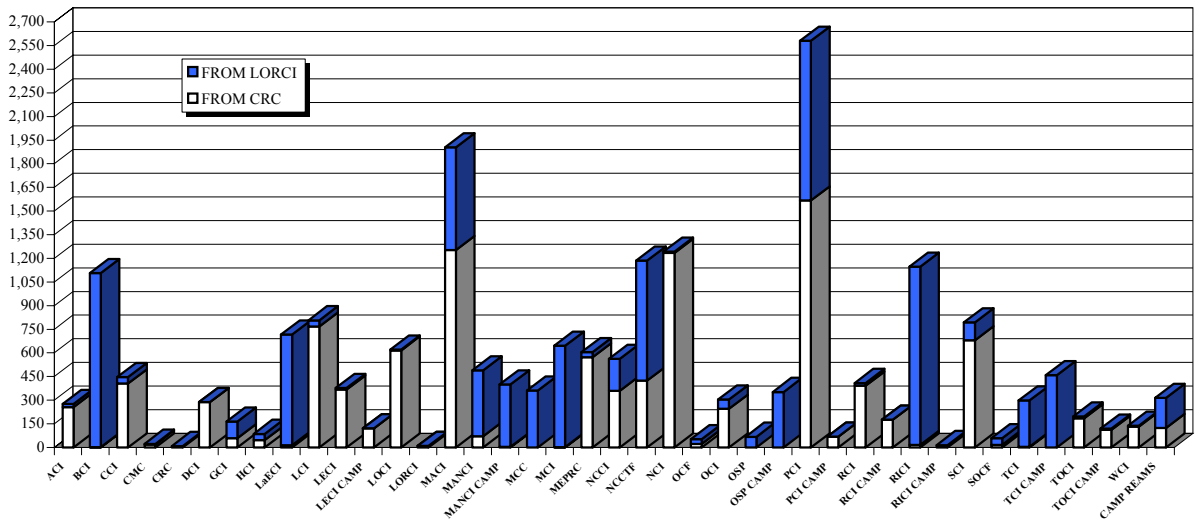
\* THIS TABLE IS PRODUCED FROM A DOTS SUMMARY OF PRIOR OHIO COMMITMENTS.

**FIGURE 2. DISTRIBUTION OF COURT COMMITMENTS FY 2002**



<b>INMATE TRANSFERS FROM MALE RECEPTION CENTERS</b>								
	<b>FROM CRC RECEPTION TO:</b>				<b>FROM LORCI RECEPTION TO:</b>			
	<b>2002</b>	<b>2001</b>	<b>2000</b>	<b>1999</b>	<b>2002</b>	<b>2001</b>	<b>2000</b>	<b>1999</b>
ACI	255	85	165	258	21	22	31	83
BCI	2	2	1	1	1,104	1,184	990	1,485
CCI	406	546	271	503	41	12	9	9
CMC	19	1	9	8	4	3	8	1
CRC	0	0	0	0	9	22	28	26
DCI	288	228	196	255	0	0	0	0
GCI	59	10	15	17	106	39	44	79
HCI	46	58	45	123	40	46	77	67
LaECI	14	34	0	0	702	643	547	0
LCI	768	674	560	357	39	5	100	196
LECI	368	246	369	571	10	3	21	6
LECI CAMP	122	162	0	0	0	0	0	0
LOCI	616	803	729	557	5	1	28	83
LORCI	10	12	25	44	0	41	21	2
MACI	1,252	1,247	1,219	1,073	652	703	907	766
MANCI	71	23	8	10	418	263	220	621
MANCI CAMP	4	0	0	0	396	329	157	131
MCC	0	1	1	0	362	386	435	187
MCI	3	7	1	4	643	623	540	526
MEPRC	573	440	488	524	32	30	0	0
NCCI	359	310	261	148	203	57	169	196
NCCTF	424	426	281	0	762	665	246	0
NCI	1,235	1,096	1,069	1,435	7	113	255	0
OCF	22	28	31	10	30	15	25	14
OCI	245	558	740	516	59	85	102	123
OSP	0	0	27	0	68	53	78	69
OSP CAMP	0	0	0	17	352	271	218	239
PCI	1,567	1,434	1,497	1,253	1,014	1,038	880	838
PCI CAMP	69	20	7	0	0	0	0	0
RCI	391	334	468	628	18	28	50	77
RCI CAMP	176	163	40	0	0	0	0	0
RICI	16	12	0	0	1,131	1,065	1,155	728
RICI CAMP	0	11	11	0	15	12	266	215
SCI	680	459	776	582	114	124	213	310
SOCF	17	39	52	79	41	52	37	66
TCI	5	0	1	1	293	228	200	590
TCI CAMP	0	12	26	0	458	477	436	169
TOCI	185	204	0	0	11	77	0	0
TOCI CAMP	112	72	0	0	8	58	0	0
WCI	131	106	39	179	7	17	2	13
CAMP REAMS	123	196	247	50	191	98	185	247
<b>TOTAL</b>	<b>10,633</b>	<b>10,059</b>	<b>9,675</b>	<b>9,203</b>	<b>9,366</b>	<b>8,888</b>	<b>8,680</b>	<b>8,162</b>

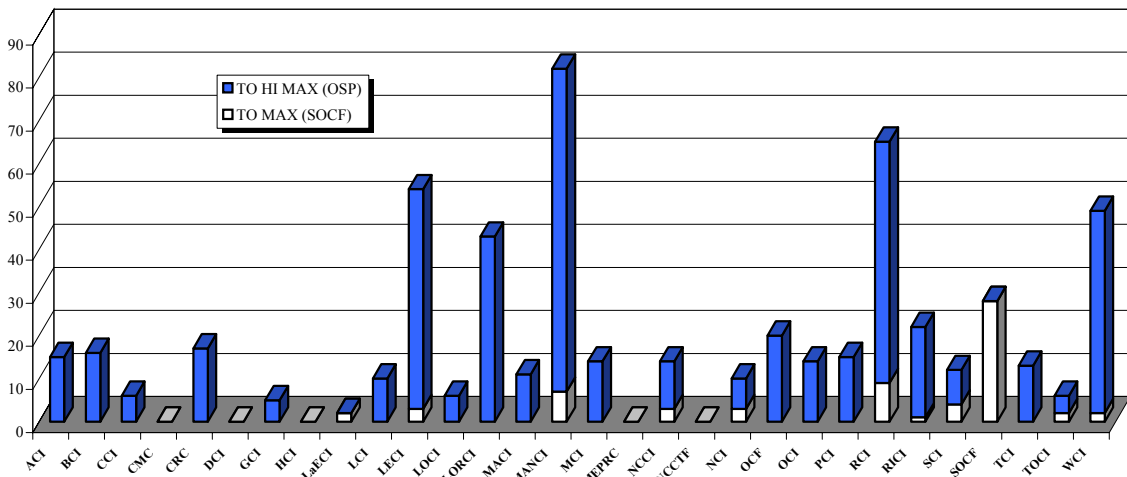
**FIGURE 3. INMATES RECEIVED FROM CRC AND LORCI FY 2002**



**DISCIPLINARY AND ADMINISTRATIVE TRANSFERS**

	FROM LESSER CUSTODY TO:				FROM HIGHER TO LESSER CUSTODY				
	HI MAX (OSP)		MAXIMUM (SOCF)		HI MAX (OSP)		MAXIMUM (SOCF)		
	2002	2001	2002	2001	2002	2001	2002	2001	2000
ACI	0	1	15	4	0	0	1	0	0
BCI	0	0	16	3	0	0	7	0	0
CCI	0	0	6	9	0	0	1	0	0
CMC	0	0	0	2	1	0	2	2	0
CRC	0	0	17	37	3	0	9	2	0
DCI	0	0	0	0	0	0	0	0	0
GCI	0	0	5	0	0	0	1	0	0
HCI	0	0	0	0	0	0	0	1	4
LaECI	2	0	0	0	0	0	1	0	0
LCI	0	0	10	1	0	0	0	0	0
LECI	3	13	51	68	4	8	52	75	114
LOCI	0	2	6	1	0	0	0	0	0
LORCI	0	1	43	23	0	0	11	0	0
MACI	0	0	11	26	0	0	0	3	7
MANCI	7	12	75	79	3	5	65	45	64
MCI	0	1	14	14	0	0	2	8	4
MEPRC	0	0	0	0	0	0	0	0	0
NCCI	3	2	11	2	0	0	2	0	0
NCCTF	0	0	0	0	0	0	0	0	0
NCI	3	6	7	7	2	0	4	0	1
OCF	0	0	20	15	0	0	20	21	20
OCI	0	3	14	8	0	0	1	0	0
PCI	0	1	15	2	0	0	1	0	0
RCI	9	7	56	50	0	0	198	195	116
RICI	1	1	21	8	0	0	6	0	0
SCI	4	0	8	9	2	0	1	5	0
SOCF	28	19	0	0	113	124	0	0	0
TCI	0	2	13	12	0	0	54	24	74
TOCI	2	0	4	0	1	0	20	3	0
WCI	2	5	47	67	2	0	51	65	109
<b>TOTAL</b>	<b>64</b>	<b>76</b>	<b>485</b>	<b>447</b>	<b>131</b>	<b>137</b>	<b>510</b>	<b>449</b>	<b>513</b>

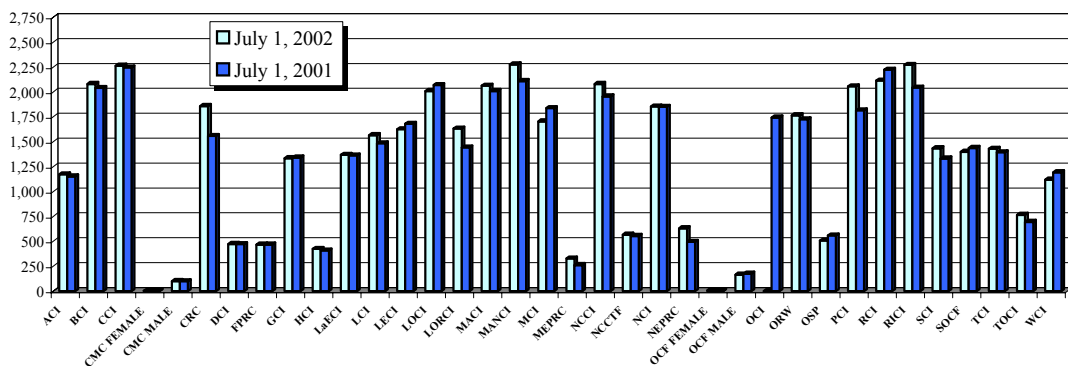
**FIGURE 4. TRANSFERS TO HIGH MAX AND MAXIMUM CUSTODY IN FY 2002**



**END OF FISCAL YEAR INSTITUTIONAL POPULATION COUNT:**

<b>INSTITUTION POPULATION TREND (PREVIOUS YEAR COMPARISON)</b>					
		7/1/2002	7/1/2001	DIFFERENCE	
ACI	(Allen Correctional Institution)	1,173	1,152	21	1.8%
BCI	(Belmont Correctional Institution)	2,080	2,040	40	2.0%
CCI	(Chillicothe Correctional Institution)	2,264	2,246	18	0.8%
CMC MALE	(Correctional Medical Center)	101	99	2	2.0%
CRC	(Correctional Reception Center)	1,858	1,558	300	19.3%
DCI	(Dayton Correctional Institution)	474	472	2	0.4%
GCI	(Grafton Correctional Institution)	1,334	1,342	-8	-0.6%
HCI	(Hocking Correctional Institution)	423	408	15	3.7%
LaECI	(Lake Erie Correctional Institution)	1,369	1,362	7	0.5%
LCI	(Lima Correctional Institution)	1,566	1,485	81	5.5%
LECI	(Lebanon Correctional Institution)	1,625	1,680	-55	-3.3%
LOCI	(London Correctional Institution)	2,009	2,069	-60	-2.9%
LORCI	(Lorain Correctional Institution)	1,632	1,443	189	13.1%
MACI	(Madison Correctional Institution)	2,063	2,009	54	2.7%
MANCI	(Mansfield Correctional Institution)	2,276	2,109	167	7.9%
MCI	(Marion Correctional Institution)	1,705	1,837	-132	-7.2%
MEPRC	(Montgomery Education & Pre-Release Center)	327	262	65	24.8%
NCCI	(North Central Correctional Institution)	2,080	1,955	125	6.4%
NCCTF	(North Coast Correctional Treatment Facility)	567	554	13	2.3%
NCI	(Noble Correctional Institution)	1,854	1,850	4	0.2%
OCF MALE	(Oakwood Correctional Facility)	165	175	-10	-5.7%
OCI	(Orient Correctional Institution)	0	1,743	-1,743	-100.0%
OSP	(Ohio State Penitentiary)	508	558	-50	-9.0%
PCI	(Pickaway Correctional Institution)	2,057	1,815	242	13.3%
RCI	(Ross Correctional Institution)	2,114	2,224	-110	-4.9%
RICI	(Richland Correctional Institution)	2,271	2,043	228	11.2%
SCI	(Southeastern Correctional Institution)	1,434	1,332	102	7.7%
SOCF	(Southern Ohio Correctional Facility)	1,399	1,438	-39	-2.7%
TCI	(Trumbull Correctional Institution)	1,429	1,395	34	2.4%
TOCI	(Toledo Correctional Institution)	766	696	70	10.1%
WCI	(Warren Correctional Institution)	1,120	1,194	-74	-6.2%
<b>MALE TOTAL</b>		<b>42,043</b>	<b>42,545</b>	<b>-502</b>	<b>-1.2%</b>
CMC FEMALE	(Correctional Medical Center)	2	5	-3	-60.0%
FPRC	(Franklin Pre-Release Center)	468	468	0	0.0%
NEPRC	(Northeast Pre-Release Center)	631	495	136	27.5%
OCF FEMALE	(Oakwood Correctional Facility)	8	5	3	60.0%
ORW	(Ohio Reformatory for Women)	1,765	1,726	39	2.3%
<b>FEMALE TOTAL</b>		<b>2,874</b>	<b>2,699</b>	<b>175</b>	<b>6.5%</b>
<b>COMBINED MALE / FEMALE TOTAL</b>		<b>44,917</b>	<b>45,244</b>	<b>-327</b>	<b>-0.7%</b>

**FIGURE 5. COMPARISON OF INSTITUTION POPULATION COUNT ON 7/1/02 and 7/1/01**

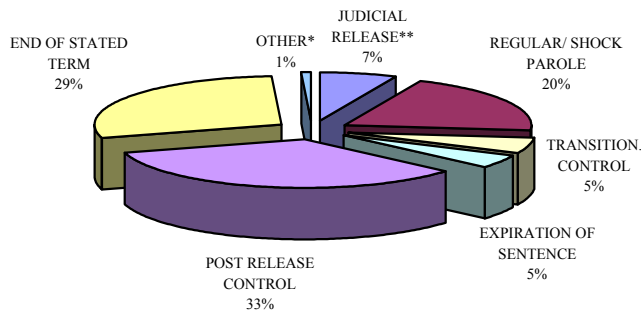


**RELEASES AND RETURNS:**

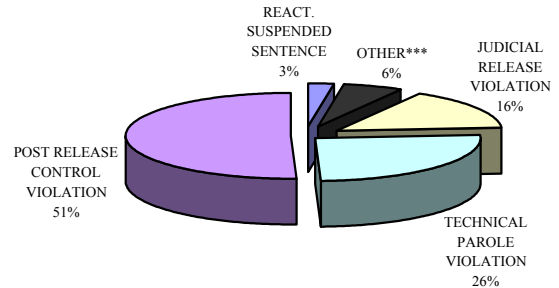
<b><u>INSTITUTIONAL STATISTICS</u></b>					
	<b>FY 2002 FEMALE</b>	<b>FY 2002 MALE</b>	<b>FY 2002 TOTAL</b>	<b>FY 2001 TOTAL</b>	<b>FY 2000 TOTAL</b>
<b><u>RELEASED BY:</u></b>					
<i>SUSPENDED SENTENCE</i>	15	59	74	153	278
<i>VACATED SENTENCE</i>	3	17	20	26	35
<i>REGULAR PAROLE</i>	159	5,026	5,185	5,479	5,562
<i>SHOCK PAROLE</i>	2	5	7	54	70
<i>JUDICIAL RELEASE</i>	353	1,306	1,659	1,561	1,630
<i>POST RELEASE CONTROL</i>	664	8,146	8,810	8,107	6,314
<i>TRANSITIONAL CONTROL</i>	220	1,084	1,304	1,228	1,005
<i>EXPIRATION OF SENTENCE</i>	64	1,155	1,219	1,236	1,879
<i>END OF STATED TERM</i>	1,181	6,238	7,419	7,218	6,543
<i>APPEALS BOND</i>	12	28	40	27	26
<i>ESCAPES (from the Office of Prisons)</i>	0	2	2	1	2
<i>DEATHS (from the Bureau of Medical Services)</i>	2	125	127	121	138
<b>TOTAL RELEASED</b>	<b>2,675</b>	<b>23,191</b>	<b>25,866</b>	<b>25,211</b>	<b>23,482</b>

<b><u>RETURNED BY:</u></b>					
<i>PAROLE VIOLATION (TECH.)</i>	35	943	978	1,782	2,463
<i>JUDICIAL RELEASE VIOLATION</i>	87	510	597	629	524
<i>POST RELEASE CONTROL VIOLATION</i>	71	1,871	1,942	1,842	1,255
<i>TRANSITIONAL CONTROL VIOLATION</i>	34	173	207	91	81
<i>REACTIVATED SUSPENDED SENTENCE</i>	14	84	98	154	264
<i>ESCAPES RETURNED</i>	0	2	2	1	2
<i>APPEALS BOND</i>	2	15	17	15	13
<b>TOTAL RETURNED</b>	<b>243</b>	<b>3,598</b>	<b>3,841</b>	<b>4,514</b>	<b>4,602</b>

**FIGURE 6. RELEASE TYPES FY 2002**



**FIGURE 7. RETURN TYPES FY 2002**

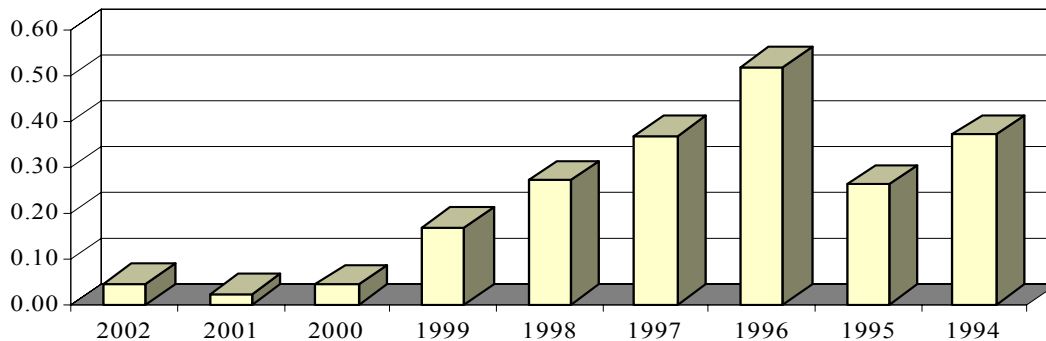


\*Other includes the following releases: vacated sentence, appeals bond, escapes and deaths.

\*\*Percent released on suspended sentence (.3%) is included with the percent released on judicial release.

\*\*\*Other includes returns for the following: transitional control violation, return from appeals bond and captured escapes.

<b>ESCAPES AND RATES OF ESCAPE</b>									
	2002	2001	2000	1999	1998	1997	1996	1995	1994
ACI	0	0	0	0	2	0	0	0	0
BCI	0	0	0	0	0	1	0	0	0
CCI	0	0	0	2	0	0	0	1	0
CMC	0	0	0	0	0	0	0	0	0
CRC	0	0	0	0	0	0	0	0	0
DCI	0	0	0	0	0	0	0	0	0
FPRC	0	0	0	0	0	0	0	0	0
GCI	0	1	0	1	1	2	0	1	2
HCI	0	0	0	0	0	0	0	0	0
LaECI	0	0	0	0	0	0	0	0	0
LCI	0	0	0	0	0	0	0	0	0
LECI	1	0	0	0	0	0	0	0	1
LOCI	0	0	1	0	2	0	2	0	0
LORCI	0	0	0	0	0	0	0	0	0
MACI	0	0	0	1	0	1	2	0	0
MANCI	0	0	0	1	2	5	6	3	1
MCI	0	0	0	0	1	1	0	1	0
MEPRC	0	0	0	0	0	0	0	0	0
NEPRC	0	0	0	0	0	1	1	0	2
NCCI	0	0	0	0	0	0	0	0	0
NCCTF	0	0	0	0	0	0	0	0	0
NCI	0	0	0	0	0	0	0	0	0
OCF	0	0	0	0	0	0	0	0	0
OCI	0	0	0	0	0	0	0	1	6
ORW	0	0	0	0	0	0	0	0	0
OSP	0	0	0	0	0	0	0	0	0
PCI	0	0	1	1	1	2	2	1	0
RCI	0	0	0	1	2	1	5	1	2
RICI	0	0	0	0	0	0	0	0	0
SCI	1	0	0	1	2	2	1	0	1
SOCF	0	0	0	0	0	0	0	2	0
TCI	0	0	0	0	0	1	4	0	0
TOCI	0	0	0	0	0	0	0	0	0
WCI	0	0	0	0	0	0	0	0	0
<b>TOTAL</b>	<b>2</b>	<b>1</b>	<b>2</b>	<b>8</b>	<b>13</b>	<b>17</b>	<b>23</b>	<b>11</b>	<b>15</b>
<b>AVG. SYSTEM POPULATION FOR YEAR</b>	<b>44,980</b>	<b>45,609</b>	<b>46,690</b>	<b>47,988</b>	<b>47,899</b>	<b>46,031</b>	<b>44,359</b>	<b>41,919</b>	<b>40,355</b>
<b>RATE OF ESCAPE PER 1000 INMATES</b>	<b>0.04</b>	<b>0.02</b>	<b>0.04</b>	<b>0.17</b>	<b>0.27</b>	<b>0.37</b>	<b>0.52</b>	<b>0.26</b>	<b>0.37</b>

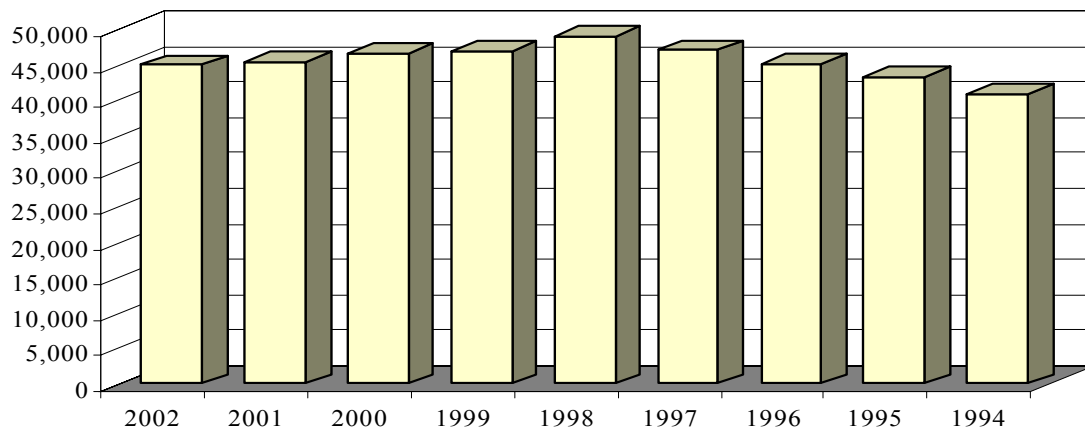


**FIGURE 8. RATES OF ESCAPE FY 2002-1994**

**INSTITUTION POPULATION TRENDS:**

<b>END OF THE YEAR INSTITUTIONAL POPULATION TREND FOR JULY 1, 2002 THROUGH JUNE 30, 1994</b>									
	<b>2002</b>	<b>2001</b>	<b>2000</b>	<b>1999</b>	<b>1998</b>	<b>1997</b>	<b>1996</b>	<b>1995</b>	<b>1994</b>
ACI	1,173	1,152	1,328	1,401	1,421	1,375	1,294	1,404	1,417
BCI	2,080	2,040	1,901	2,423	2,650	2355	2,252	283	0
CCI	2,264	2,246	2,195	2,448	2,854	2,628	2,582	2,620	2,791
CMC MALE	101	99	146	132	146	135	153	147	148
CMC FEMALE	2	5	2	3	5	5	8	5	0
CRC	1,858	1,558	1,733	1,667	2,304	2,155	2,142	2,240	2,182
DCI	474	472	473	474	483	486	485	484	481
FPRC	468	468	438	459	474	479	490	471	456
GCI	1,334	1,342	1,450	1,593	1,699	1,635	1,621	1,575	1,620
HCI/HCF	423	408	417	436	447	433	440	435	449
LaECI	1,369	1,362	999	0	0	0	0	0	0
LCI	1,566	1,485	1,549	1,650	1,937	1,990	2,125	1,926	1,897
LECI	1,625	1,680	1,875	2,192	2,307	2,225	2,103	2,188	2,202
LOCI	2,009	2,069	1,915	1,857	1,946	1,904	2,350	2,311	2,366
LORCI	1,632	1,443	1,548	1,676	2,116	2,041	1,993	2,071	2,337
MACI	2,063	2,009	2,093	2,471	2,601	2,483	2,552	2,589	2,599
MANCI	2,276	2,109	2,319	2,671	2,696	2,655	2,588	2,230	2,380
MCI	1,705	1,837	1,782	1,911	2,222	2,144	2,087	2,224	2,284
MEPRC	327	262	328	322	347	331	349	342	208
NEPRC	631	495	590	583	634	638	631	655	638
NCCI	2,080	1,955	2,145	2,280	2,312	2,226	2,252	2,262	0
NCCTF	567	554	549	0	0	0	0	0	0
NCI	1,854	1,850	2,014	2,054	2,397	2,128	0	0	0
OCF MALE	165	175	130	156	141	150	145	211	48
OCF FEMALE	8	5	8	9	5	0	0	0	0
OCI	0	1,743	1,920	1,935	2,038	2,056	2,242	2,430	2,396
ORW	1,765	1,726	1,807	1,802	1,780	1,716	1,673	1,531	1,418
ORW MALES	0	0	0	0	0	0	0	190	249
OSP	508	558	610	616	285	0	0	0	0
PCI	2,057	1,815	1,903	1,920	1,959	1,950	1,956	1,906	1,890
RCI	2,114	2,224	2,359	2,508	2,751	2,771	2,731	2,828	2,834
RICI	2,271	2,043	2,183	1,238	0	0	0	0	0
SCI	1,434	1,332	1,718	1,677	1,769	1,743	1,755	1,797	1,801
SOCF	1,399	1,438	1,409	1,436	1,481	1,410	1,176	1,009	1,160
TCI	1,429	1,395	1,411	1,429	1,457	1,442	1,389	1,272	955
TOCI	766	696	0	0	0	0	0	0	0
WCI	1,120	1,194	1,290	1,377	1,365	1,306	1,472	1,522	1,578
<b>TOTAL</b>	<b>44,917</b>	<b>45,244</b>	<b>46,537</b>	<b>46,806</b>	<b>49,029</b>	<b>46,995</b>	<b>45,036</b>	<b>43,158</b>	<b>40,784</b>

**FIGURE 9. INSTITUTION POPULATION TREND FY 2002-1994**





<b>END OF THE YEAR INSTITUTIONAL POPULATION TREND FOR JULY 1, 1993 THROUGH JUNE 30, 1985</b>									
	<b>1993</b>	<b>1992</b>	<b>1991</b>	<b>1990</b>	<b>1989</b>	<b>1988</b>	<b>1987</b>	<b>1986</b>	<b>1985</b>
ACI	1,171	1,111	979	917	753	644	59	0	0
CCF/OP	0	0	0	0	0	0	0	0	0
CCI	2,794	2,625	2,456	2,325	2,064	1,864	2,975	2,935	2,523
CLEV. P.R.	0	0	0	0	0	49	41	0	0
CRC	2,331	2,198	2,009	1,683	1,534	1,005	0	0	0
DCI	493	480	468	467	480	456	464	0	0
EDP	0	0	0	0	0	0	0	0	0
FPRC	428	364	356	344	322	0	0	0	0
GCI	1,317	1,307	1,121	1,054	793	0	0	0	0
HCI/HCF	441	397	405	328	317	322	323	323	322
LCI	1,974	1,923	1,878	1,840	1,702	1,611	1,721	1,704	1,706
LECI	2,192	1,911	1,942	1,937	1,939	1,868	1,851	2,095	2,113
LOCI	2,426	2,459	2,281	2,172	2,086	1,864	2,211	2,178	2,142
LORCI	2,313	2,163	1,886	1,520	0	0	0	0	0
MACI	2,111	2,088	1,898	1,705	1,416	1,313	68	0	0
MANCI	2,542	2,306	1,830	0	0	0	0	0	0
MCI	2,210	1,789	1,788	1,951	1,951	1,964	2,162	2,121	2,047
NEPRC	651	530	380	458	368	33	0	0	0
OCI	2,285	2,266	2,169	2,146	1,820	1,625	2,071	1,903	1,470
ORW	1,374	1,458	1,334	1,261	1,375	1,261	1,193	919	808
ORW MALES	241	0	0	0	0	0	0	0	0
OSR	0	0	0	1,128	2,359	2,339	2,738	2,680	2,379
PCI	2,028	1,972	1,542	1,712	1,420	1,393	1,242	1,250	1,150
RCI	2,687	2,506	2,278	2,108	1,688	1,475	313	0	0
SCI/SOTC	1,912	1,999	1,477	1,517	1,436	1,468	1,445	1,137	909
SOCF	1,073	1,832	1,552	2,202	2,107	2,106	2,412	2,376	2,295
TCI	940	0	0	0	0	0	0	0	0
WCAC	0	0	0	0	0	0	0	0	0
WCI	1,462	1,432	1,324	1,087	146	90	0	0	0
<b>TOTAL</b>	<b>39,396</b>	<b>37,116</b>	<b>33,353</b>	<b>31,862</b>	<b>28,076</b>	<b>24,750</b>	<b>23,289</b>	<b>21,621</b>	<b>19,864</b>

**FIGURE 10: INSTITUTION POPULATION TREND 1993-1985**

