



Ohio Department of Rehabilitation and Correction

770 West Broad Street
Columbus OH 43222

Ted Strickland, Gov.

www.drc.ohio.gov

Terry J. Collins, Director

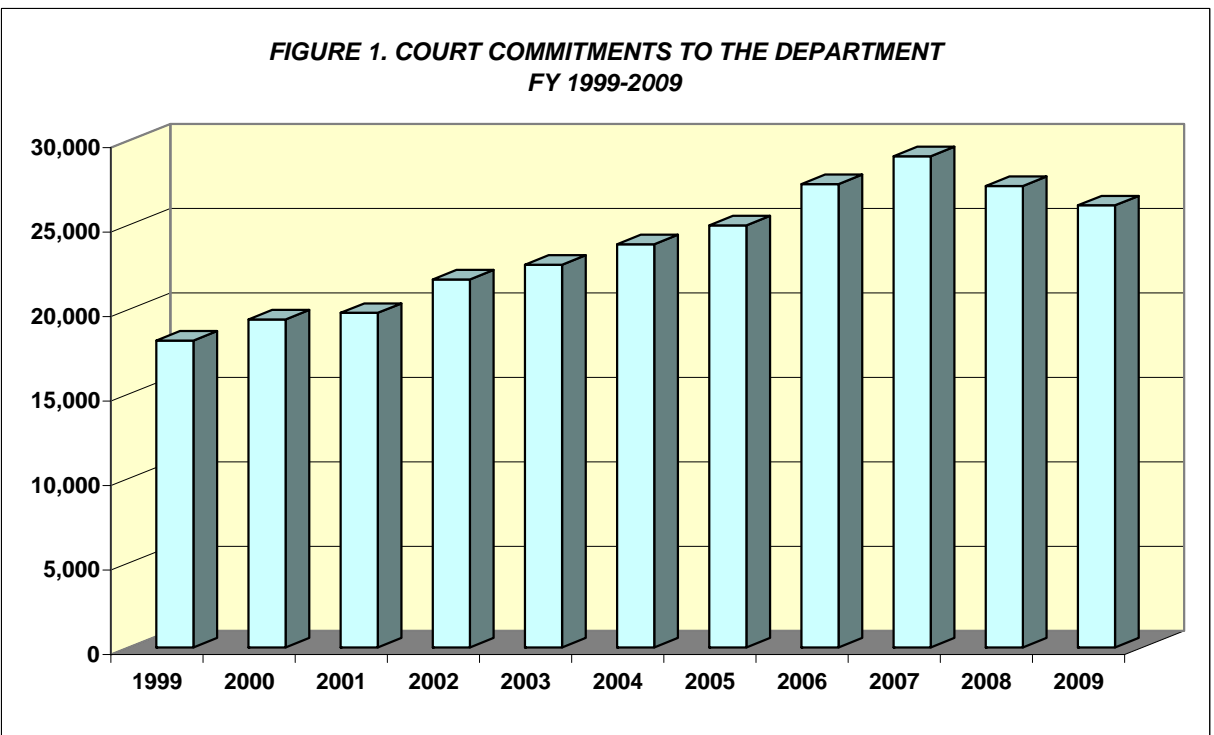
TO: ALL CONCERNED
FROM: SENARATH DASSANAYAKA, SENIOR RESEARCHER
BUREAU OF RESEARCH
OFFICE OF POLICY
DATE: 12/10/2009

SUBJECT: FISCAL YEAR 2009 SUMMARY OF INSTITUTION STATISTICS

TOTAL COURT COMMITMENTS TO THE OHIO DEPARTMENT OF REHABILITATION AND CORRECTION

OFFICIAL COMMITMENT TOTALS			
CRC RECEPTION - MALE	13,139	MALE INTAKE	22,804
LORCI RECEPTION - MALE	9,665	FEMALE INTAKE	3,361
ORW RECEPTION - FEMALE	3,361	TOTAL	26,165
TOTAL	26,165		

COURT COMMITMENTS TO THE DEPARTMENT FY 1999-2009										
1999	2000	2001	2002	2003	2004	2005	2006	2007	2008	2009
18,165	19,418	19,801	21,787	22,649	23,866	24,985	27,431	29,069	27,315	26,165



NUMBER OF COMMITMENTS TO THE DEPARTMENT								
FY 2009*	CRC MALE	LORCI MALE	MALE N	MALE %	ORW FEMALE	FEMALE %	TOTAL N	TOTAL %
1ST COMMITMENTS	6,738	4,398	11,136	48.8%	2378	70.8%	13,514	51.6%
2ND COMMITMENTS	2,915	2,153	5,068	22.2%	523	15.6%	5,591	21.4%
3RD OR MORE COMMIT.	3,486	3,114	6,600	28.9%	460	13.7%	7,060	27.0%
TOTAL	13,139	9,665	22,804	100.0%	3,361	100.0%	26,165	100.0%

NUMBER OF COMMITMENTS TO THE DEPARTMENT								
FY 2008*	CRC MALE	LORCI MALE	MALE N	MALE %	ORW FEMALE	FEMALE %	TOTAL N	TOTAL %
1ST COMMITMENTS	7,178	4,462	11,640	49.0%	2462	69.0%	14,102	51.6%
2ND COMMITMENTS	3,097	2,305	5,402	22.7%	587	16.4%	5,989	21.9%
3RD OR MORE COMMIT.	3,481	3,223	6,704	28.2%	520	14.6%	7,224	26.4%
TOTAL	13,756	9,990	23,746	100.0%	3,569	100.0%	27,315	100.0%

NUMBER OF COMMITMENTS TO THE DEPARTMENT								
FY 2007*	CRC MALE	LORCI MALE	MALE N	MALE %	ORW FEMALE	FEMALE %	TOTAL N	TOTAL %
1ST COMMITMENTS	7,414	4,748	12,162	48.2%	2611	67.9%	14,773	50.8%
2ND COMMITMENTS	3,417	2,506	5,923	23.5%	677	17.6%	6,600	22.7%
3RD OR MORE COMMIT.	3,634	3,503	7,137	28.3%	559	14.5%	7,696	26.5%
TOTAL	14,465	10,757	25,222	100.0%	3,847	100.0%	29,069	100.0%

* THIS TABLE IS PRODUCED FROM A DOTS SUMMARY OF PRIOR OHIO COMMITMENTS.

FIGURE 2. DISTRIBUTION OF COURT COMMITMENTS FY 2009

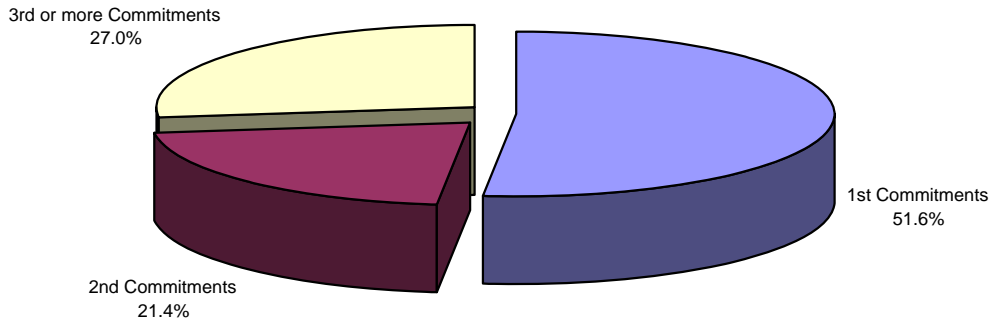
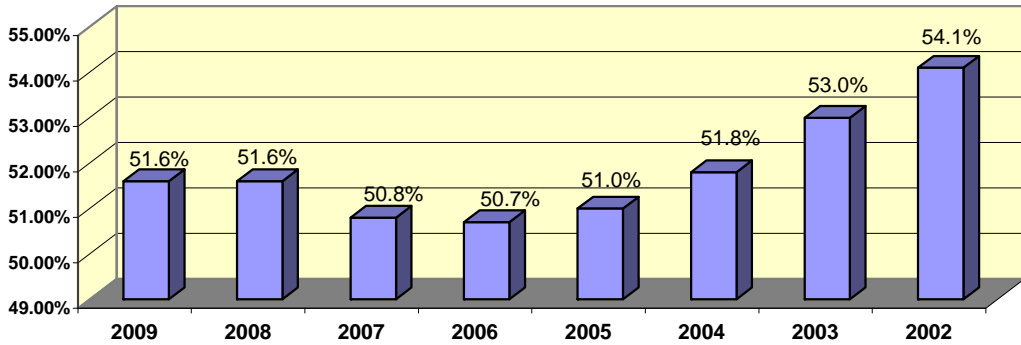
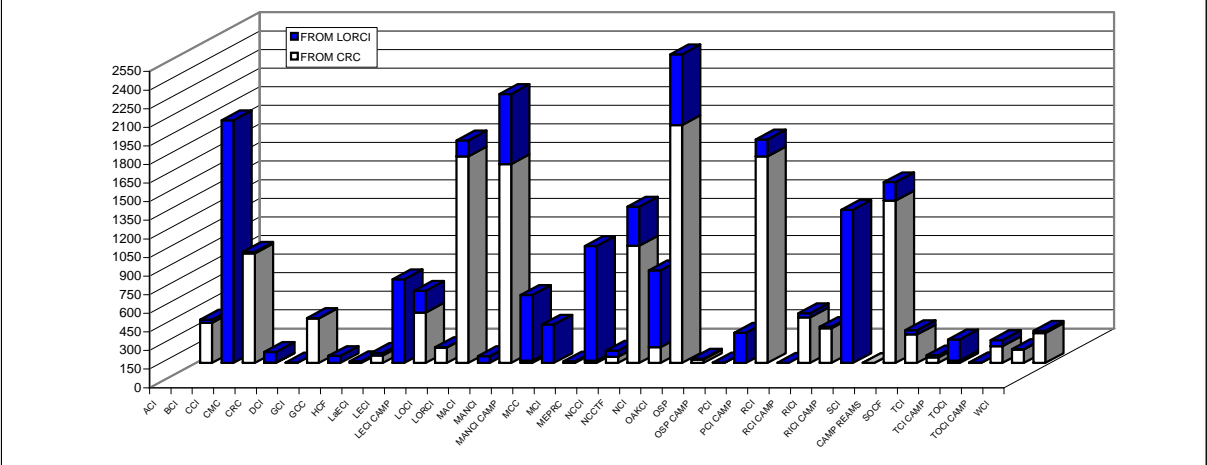


FIGURE 3. PERCENT OF INMATES SERVING A FIRST COMMITMENT - FY 2009 - 2002



INMATE TRANSFERS FROM MALE RECEPTION CENTERS								
	FROM CRC RECEPTION TO:				FROM LORCI RECEPTION TO:			
	2009	2008	2007	2006	2009	2008	2007	2006
ACI	325	233	264	279	24	30	57	47
BCI	0	0	0	1	1957	2188	2,223	2181
CCI	884	1064	1,223	1178	12	49	22	43
CMC	4	5	7	3	85	2	3	3
CRC	0	0	0	0	5	20	24	22
DCI	360	162	202	108	2	2	2	3
GCI	0	1	0	2	57	86	101	183
GCI CAMP	0	0	0	0	14	0	0	50
HCF	61	60	90	77	21	65	78	65
LaECI	0	0	0	0	676	974	981	1110
LECI	407	451	256	507	175	113	11	56
LECI CAMP	126	216	268	358	1	0	0	0
LOCI	1666	1505	1,356	1293	130	140	1	1
LORCI	0	0	0	0	56	0	13	22
MACI	1605	1832	1,685	1848	564	636	623	598
MANCI	18	48	59	47	531	357	677	516
MANCI CAMP	0	0	0	5	310	361	252	241
MCC	0	0	0	64	13	0	1	314
MCI	18	1	4	122	925	1529	1,846	1058
MEPRC	49	409	435	423	51	0	0	0
NCCI	945	1161	1,236	990	315	98	64	137
NCCTF	127	132	124	54	620	930	890	1038
NCI	1918	1769	2,195	2634	572	376	114	88
OCF	27	44	42	56	9	6	3	12
OSP	2	4	1	4	3	1	245	341
OSP CAMP	0	0	0	0	243	342	165	120
PCI	1666	1781	1,844	1295	136	100	269	139
PCI CAMP	0	0	0	0	1	0	0	0
RCI	368	438	1,137	458	33	27	54	23
RCI CAMP	281	255	359	462	11	0	0	0
RICI	0	1	21	2	1234	1541	1,691	1624
RICI CAMP	0	0	0	0	0	0	0	0
SCI	1309	1214	1,415	1112	149	13	38	40
SCI CAMP	230	287	272	240	34	40	9	12
SOCF	44	52	69	38	18	43	44	24
TCI	20	3	7	3	170	126	204	157
TCI CAMP	5	0	5	8	0	0	0	0
TOCI	136	103	120	70	48	18	150	9
TOCI CAMP	110	139	153	172	2	0	0	0
WCI	242	283	290	144	18	5	9	6
TOTAL	12953	13653	15,139	14057	9225	10218	10,864	10,283

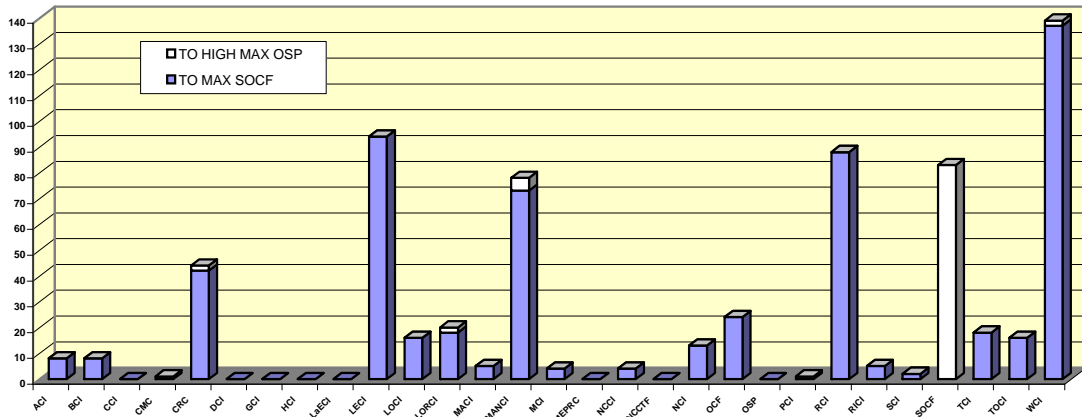
FIGURE 4. INMATES RECEIVED FROM CRC AND LORCI - FY 2009



DISCIPLINARY AND ADMINISTRATIVE TRANSFERS

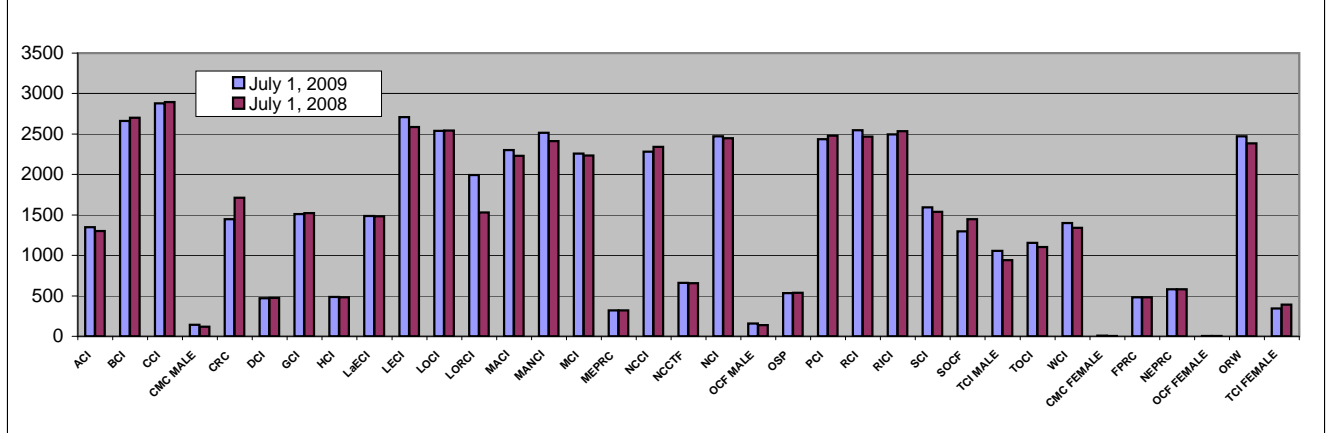
	FROM LESSER CUSTODY TO:				FROM HIGHER TO LESSER CUSTODY			
	LEVEL 5 (OSP)		LEVEL 4 (SOCF)		LEVEL 5 (OSP)		LEVEL 4 (SOCF)	
	2009	2008	2009	2008	2009	2008	2009	2008
ACI	0	0	8	4	0	0	1	2
BCI	0	0	8	9	0	0	1	4
CCI	0	0	0	9	0	0	2	3
CMC	0	0	1	4	1	1	2	0
CRC	2	3	42	49	3	2	7	6
DCI	0	0	0	0	0	0	0	0
GCI	0	0	0	0	0	0	0	0
HCF	0	0	0	0	0	0	1	0
LaECI	0	0	0	0	0	0	0	0
LECI	0	22	94	149	2	17	51	100
LOCI	0	1	16	9	0	0	8	3
LORCI	2	1	18	48	0	0	2	0
MACI	0	0	5	12	0	0	10	4
MANCI	5	9	73	63	5	3	30	28
MCI	0	0	4	6	1	0	9	0
MEPRC	0	0	0	0	0	0	0	0
NCCI	0	0	4	6	0	0	3	1
NCCTF	0	0	0	0	0	0	0	0
NCI	0	0	13	25	1	1	3	11
OCF	0	0	24	10	0	1	37	18
OSP	0	0	0	3	0	0	0	0
PCI	0	1	1	0	0	0	3	0
RCI	0	1	88	77	4	1	42	52
RICI	0	0	5	3	0	0	1	1
SCI	0	0	2	6	0	0	2	4
SOCF	83	80	0	0	31	48	0	0
TCI	0	1	18	26	11	10	58	17
TOCI	0	2	16	17	13	4	75	8
WCI	2	4	137	151	5	6	122	105
TOTAL	94	125	577	686	77	94	470	367

FIGURE 5. TRANSFERS TO LEVEL 5 (HIGH MAX) AND LEVEL 4 (MAXIMUM) CUSTODY IN FY 2009



INSTITUTION POPULATION TREND (PREVIOUS YEAR COMPARISON)					
		7/1/2009	7/1/2008	DIFFERENCE	
ACI	(Allen Correctional Institution)	1350	1,300	50	3.8%
BCI	(Belmont Correctional Institution)	2663	2,700	-37	-1.4%
CCI	(Chillicothe Correctional Institution)	2879	2,893	-14	-0.5%
CMC MALE	(Correctional Medical Center)	142	117	25	21.4%
CRC	(Correctional Reception Center)	1449	1,712	-263	-15.4%
DCI	(Dayton Correctional Institution)	472	476	-4	-0.8%
GCI	(Grafton Correctional Institution)	1512	1,522	-10	-0.7%
HCI	(Hocking Correctional Institution)	486	484	2	0.4%
LaECI	(Lake Erie Correctional Institution)	1487	1,483	4	0.3%
LECI	(Lebanon Correctional Institution)	2710	2,587	123	4.8%
LOCI	(London Correctional Institution)	2539	2,542	-3	-0.1%
LORCI	(Lorain Correctional Institution)	1994	1,531	463	30.2%
MACI	(Madison Correctional Institution)	2301	2,232	69	3.1%
MANCI	(Mansfield Correctional Institution)	2514	2,414	100	4.1%
MCI	(Marion Correctional Institution)	2260	2,234	26	1.2%
MEPRC	(Montgomery Education & Pre-Release Center)	321	321	0	0.0%
NCCI	(North Central Correctional Institution)	2280	2,343	-63	-2.7%
NCCTF	(North Coast Correctional Treatment Facility)	659	658	1	0.2%
NCI	(Noble Correctional Institution)	2473	2,448	25	1.0%
OCF MALE	(Oakwood Correctional Facility)	159	137	22	16.1%
OSP	(Ohio State Penitentiary)	535	538	-3	-0.6%
PCI	(Pickaway Correctional Institution)	2436	2,478	-42	-1.7%
RCI	(Ross Correctional Institution)	2547	2,467	80	3.2%
RICI	(Richland Correctional Institution)	2495	2,534	-39	-1.5%
SCI	(Southeastern Correctional Institution)	1595	1,540	55	3.6%
SOCF	(Southern Ohio Correctional Facility)	1297	1,448	-151	-10.4%
TCI	(Trumbull Correctional Institution)	1056	940	116	12.3%
TOCI	(Toledo Correctional Institution)	1154	1,102	52	4.7%
WCI	(Warren Correctional Institution)	1401	1,342	59	4.4%
MALE TOTAL		47166	46,523	643	1.4%
CMC FEMALE	(Correctional Medical Center)	7	3	4	133.3%
FPRC	(Franklin Pre-Release Center)	484	482	2	0.4%
NEPRC	(Northeast Pre-Release Center)	581	583	-2	-0.3%
OCF FEMALE	(Oakwood Correctional Facility)	5	4	1	25.0%
ORW	(Ohio Reformatory for Women)	2471	2,386	85	3.6%
TCI FEMALE	(Trumbull Correctional Institution)	346	390	-44	-11.3%
FEMALE TOTAL		3894	3,848	46	1.2%
COMBINED MALE / FEMALE TOTAL		51,060	50,371	689	1.4%

FIGURE 6. COMPARISON OF INSTITUTION POPULATION COUNT 7/1/09 and 7/1/08

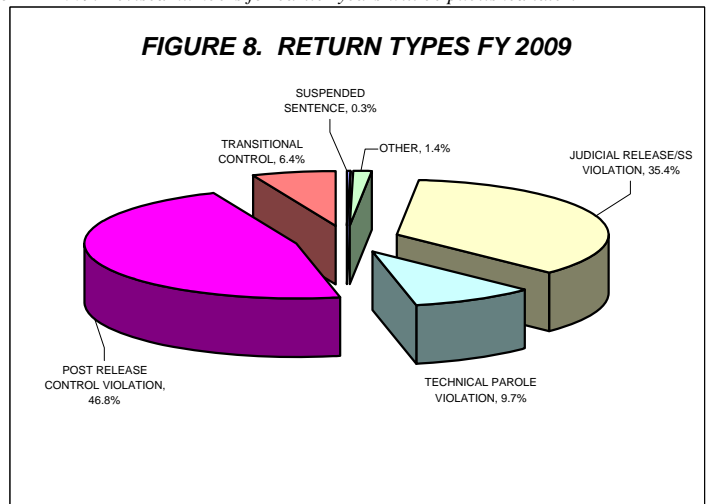
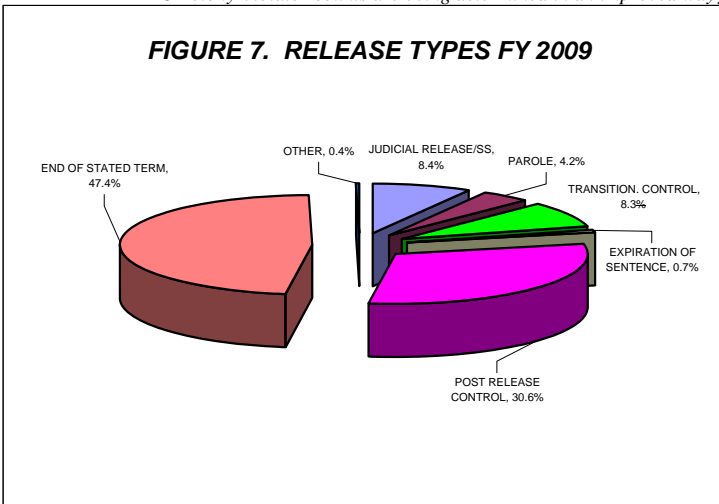


RELEASES AND RETURNS:

<u>INSTITUTIONAL STATISTICS</u>					
	FY 2009	FY 2009	FY 2009	FY 2008	FY 2007
	MALE	FEMALE	TOTAL	TOTAL	TOTAL
RELEASED BY:					
SUSPENDED SENTENCE	2	0	2	0	14
VACATED SENTENCE	1	2	3	2	8
REGULAR PAROLE	1105	36	1141	1391	1814
SHOCK PAROLE	0	0	0	0	1
JUDICIAL RELEASE	1664	609	2273	2192	1893
POST RELEASE CONTROL	7438	839	8277	9019	8497
TRANSITIONAL CONTROL	2065	193	2258	2460	2287
EXPIRATION OF SENTENCE	158	45	203	253	288
END OF STATED TERM	11105	1731	12836	13406	13269
APPEALS BOND	20	4	24	25	18
ESCAPES (from the Office of Prisons)	2	0	2	2	0
DEATHS (from the Bureau of Medical Services)	64	4	68	98	130
TOTAL RELEASED	23624	3463	27087	28848	28219
RETURNED BY:					
PAROLE VIOLATION (TECH.) ¹	240	8	248	410	567
JUDICIAL RELEASE VIOLATION	783	125	908	865	912
POST RELEASE CONTROL VIOLATION ¹	1139	63	1202	1428	1420
TRANSITIONAL CONTROL VIOLATION	139	25	164	198	165
REACTIVATED SUSPENDED SENTENCE	7	0	7	5	8
ESCAPES RETURNED	16	0	16	16	2
APPEALS BOND	19	2	21	16	13
TOTAL RETURNED	2343	223	2566	2938	3,087
¹ Numbers from DOTS. PRC and Parole offenders being held at reception prior to a violation hearing have caused errors in the monthly report totals, so monthly totals are not summed for this report.					
PAROLE VIOLATORS RECOMMISSIONED²	335	9	344	508	612
PRC FELONY VIOLATOR²	1,457	67	1,524	*	*

² PVR and PRC Felony Violator numbers from DOTS.

* PRC Felony Violator counts are being determined in an improved way for FY 2009. Revised numbers for earlier years will be published later.

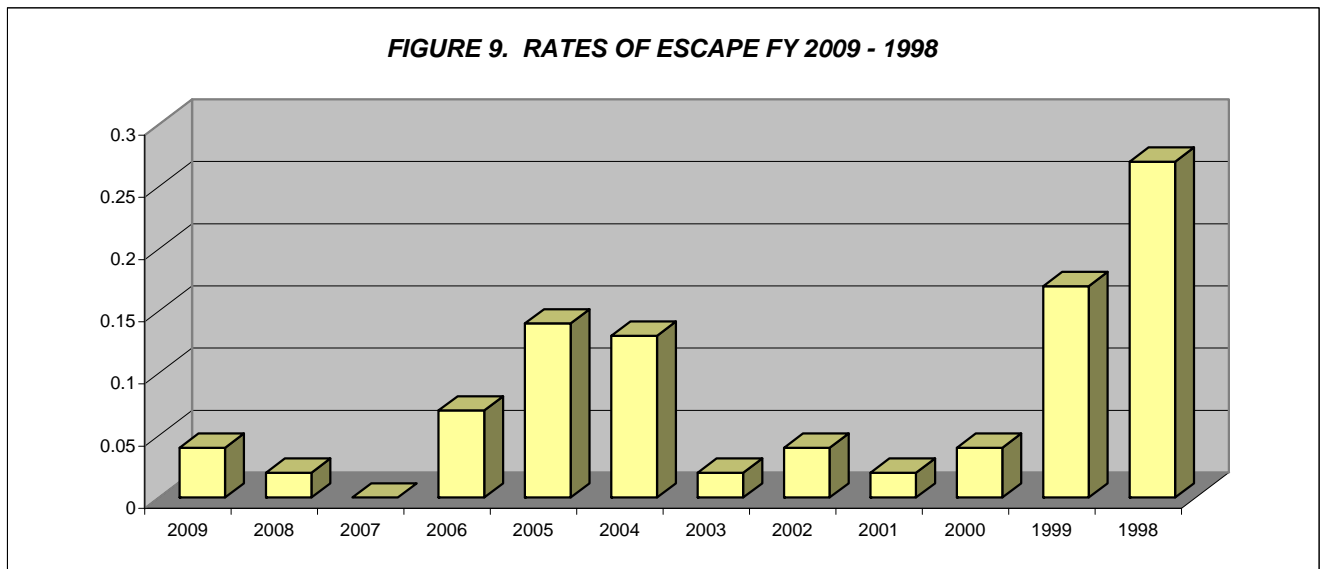


*Other includes the following releases: vacated sentence, appeals bond, escapes and deaths.

**Includes offenders released on suspended sentence.

***Other includes returns for the following: transitional control violation, return from appeals bond and captured escapes.

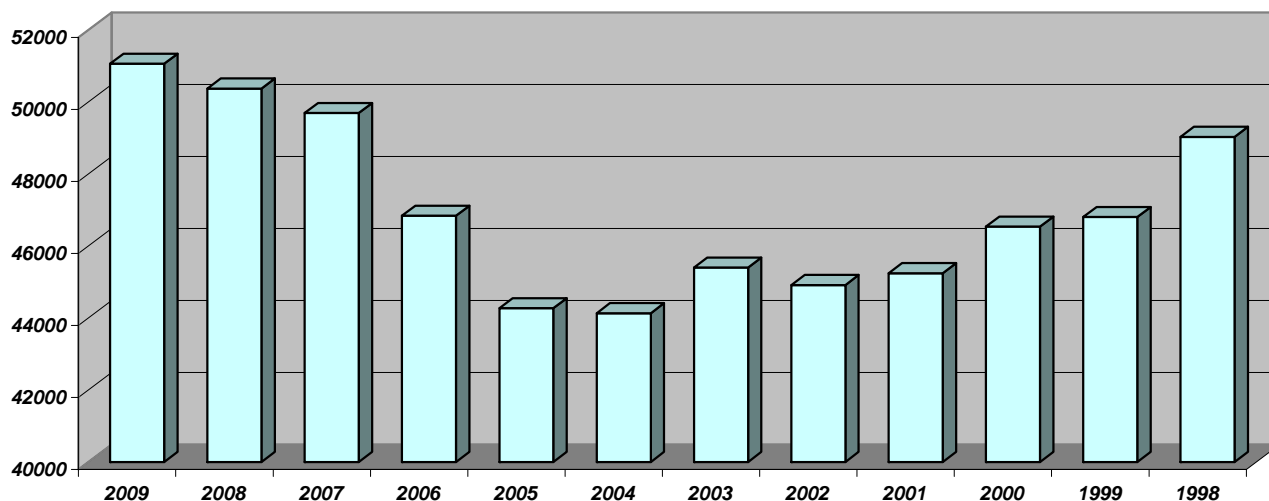
ESCAPES AND RATES OF ESCAPE												
	2009	2008	2007	2006	2005	2004	2003	2002	2001	2000	1999	1998
ACI	0	0	0	0	0	0	0	0	0	0	0	2
BCI	1	0	0	0	0	0	0	0	0	0	0	0
CCI	0	0	0	0	0	0	0	0	0	0	2	0
CMC	0	0	0	0	0	0	0	0	0	0	0	0
CRC	0	0	0	0	0	0	0	0	0	0	0	0
DCI	0	0	0	0	1	0	0	0	0	0	0	0
FPRC	0	0	0	0	0	0	0	0	0	0	0	0
GCI	0	0	0	0	0	0	1	0	1	0	1	1
HCI	0	0	0	0	0	0	0	0	0	0	0	0
LaECI	0	0	0	0	0	0	0	0	0	0	0	0
LCI	0	0	0	0	0	0	0	0	0	0	0	0
LECI	0	0	0	1	0	0	0	1	0	0	0	0
LOCI	0	0	0	0	0	0	0	0	0	1	0	2
LORCI	1	0	0	0	0	0	0	0	0	0	0	0
MACI	0	0	0	0	0	0	0	0	0	0	1	0
MANCI	0	0	0	0	1	1	0	0	0	0	1	2
MCI	0	0	0	0	0	0	0	0	0	0	0	1
MEPRC	0	0	0	0	1	0	0	0	0	0	0	0
NEPRC	0	0	0	0	0	0	0	0	0	0	0	0
NCCI	0	0	0	0	0	0	0	0	0	0	0	0
NCCTF	0	0	0	0	0	0	0	0	0	0	0	0
NCI	0	0	0	0	0	0	0	0	0	0	0	0
OCF	0	0	0	0	0	0	0	0	0	0	0	0
OCI	0	0	0	0	0	0	0	0	0	0	0	0
ORW	0	0	0	0	0	0	0	0	0	0	0	0
OSP	0	0	0	0	1	0	0	0	0	0	0	0
PCI	0	0	0	2	0	3	0	0	0	1	1	1
RCI	0	0	0	0	2	1	0	0	0	0	1	2
RICI	0	0	0	0	0	0	0	0	0	0	0	0
SCI	0	1	0	0	0	1	0	1	0	0	1	2
SOCF	0	0	0	0	0	0	0	0	0	0	0	0
TCI	0	0	0	0	0	0	0	0	0	0	0	0
TOCI	0	0	0	0	0	0	0	0	0	0	0	0
WCI	0	0	0	0	0	0	0	0	0	0	0	0
TOTAL	2	1	0	3	6	6	1	2	1	2	8	13
AVG. SYSTEM POPULATION												
FOR YEAR	50910	49926	48415	45203	44,026	44,527	45,175	44,980	45,609	46,690	47,988	47,899
RATE OF ESCAPE PER 1000 INMATE												
	0.04	0.02	0.00	0.07	0.14	0.13	0.02	0.04	0.02	0.04	0.17	0.27



INSTITUTION POPULATION TRENDS:

END OF THE YEAR INSTITUTIONAL POPULATION TREND FOR JULY 1, 2009 THROUGH JULY 1, 1998												
	2009	2008	2007	2006	2005	2004	2003	2002	2001	2000	1999	1998
ACI	1350	1300	1348	1,326	1,320	1,282	1,227	1,173	1,152	1,328	1,401	1,421
BCI	2663	2700	2659	2,507	2,184	2,148	2,120	2,080	2,040	1,901	2,423	2,650
CCI	2879	2893	2901	2,861	2,751	2,655	2,579	2,264	2,246	2,195	2,448	2,854
CMC MALE	142	117	119	112	98	110	106	101	99	146	132	146
CMC FEMAL	7	3	4	5	10	4	6	2	5	2	3	5
CRC	1449	1712	1863	1,860	1,751	1,602	1,916	1,858	1,558	1,733	1,667	2,304
DCI	472	476	464	413	410	412	459	474	472	473	474	483
FPRC	484	482	495	482	484	460	457	468	468	438	459	474
GCI	1512	1522	1435	1,433	1,405	1,424	1,346	1,334	1,342	1,450	1,593	1,699
HCF	486	484	475	468	464	460	447	423	408	417	436	447
LaECI	1487	1483	1457	1,476	1,378	1,373	1,388	1,369	1,362	999	0	0
LCI	0	0	0	0	0	0	496	1,566	1,485	1,549	1,650	1,937
LECI	2710	2587	2253	2232	1,963	1,952	1,728	1,625	1,680	1,875	2,192	2,307
LOCI	2539	2542	2153	2189	2,047	2,054	2,027	2,009	2,069	1,915	1,857	1,946
LORCI	1994	1531	2028	1923	1,479	1,298	1,954	1,632	1,443	1,548	1,676	2,116
MACI	2301	2232	2067	2056	1,957	2,056	2,110	2,063	2,009	2,093	2,471	2,601
MANCI	2514	2414	2407	2260	2,378	2,353	2,373	2,276	2,109	2,319	2,671	2,696
MCI	2260	2234	2093	1922	1,787	1,663	1,712	1,705	1,837	1,782	1,911	2,222
MEPRC	321	321	347	347	345	319	328	327	262	328	322	347
NEPRC	581	583	577	582	532	577	600	631	495	590	583	634
NCCI	2280	2343	2313	2275	2,303	2,240	2,199	2,080	1,955	2,145	2,280	2,312
NCCTF	659	658	602	604	546	530	533	567	554	549	0	0
NCI	2473	2448	2364	2346	2,103	2,149	1,964	1,854	1,850	2,014	2,054	2,397
OCF MALE	159	137	121	108	119	114	131	165	175	130	156	141
OCF FEMAL	5	4	7	3	3	1	0	8	5	8	9	5
OCI	0	0	0	0	0	0	0	0	1,743	1,920	1,935	2,038
ORW	2471	2386	2369	2,023	1,857	1,969	1,827	1,765	1,726	1,807	1,802	1,780
ORW MALES	0	0	0	0	0	0	0	0	0	0	0	0
OSP	535	538	519	535	466	460	505	508	558	610	616	285
PCI	2436	2478	2363	2043	1,960	2,152	2,251	2,057	1,815	1,903	1,920	1,959
RCI	2547	2467	2563	2294	2,261	2,228	2,333	2,114	2,224	2,359	2,508	2,751
RICI	2495	2534	2524	2411	2,291	2,273	2,238	2,271	2,043	2,183	1,238	0
SCI	1595	1540	1595	1467	1,583	1,636	1,563	1,434	1,332	1,718	1,677	1,769
SOCF	1297	1448	1417	1141	984	978	1,230	1,399	1,438	1,409	1,436	1,481
TCI MALE	1056	940	956	956	963	1,365	1,396	1,429	1,395	1,411	1,429	1,457
TCI FEMALE	346	390	388	358	254	0	0	0	0	0	0	0
TOCI	1154	1102	1092	803	787	789	797	766	696	0	0	0
WCI	1401	1342	1353	1,018	1,047	1,048	1,056	1,120	1,194	1,290	1,377	1,365
TOTAL	51060	50,371	49,691	46,839	44,270	44,134	45,402	44,917	45,244	46,537	46,806	49,029

FIGURE 10. INSTITUTION POPULATION TREND FY 2009- FY 1998



END OF THE YEAR INSTITUTIONAL POPULATION TREND FOR JULY 1, 1997 THROUGH JULY 1, 1987

	1997	1996	1995	1994	1993	1992	1991	1990	1989	1988	1987
ACI	1,375	1294	1404	1,417	1,171	1,111	979	917	753	644	59
BCI	2,355	2252	283	0	0	0	0	0	0	0	0
CCI	2,628	2582	2620	2,791	2,794	2,625	2,456	2,325	2,064	1,864	2,975
CLEV. P.R.	0	0	0	0	0	0	0	0	0	49	41
CMC MALE	135	153	147	148	0	0	0	0	0	0	0
CMC FEMAL	5	8	5	0	0	0	0	0	0	0	0
CRC	2,155	2142	2240	2,182	2,331	2,198	2,009	1,683	1,534	1,005	0
DCI	486	485	484	481	493	480	468	467	480	456	464
FPRC	479	490	471	456	428	364	356	344	322	0	0
GCI	1,635	1621	1575	1,620	1,317	1,307	1,121	1,054	793	0	0
HCI/HCF	433	440	435	449	441	397	405	328	317	322	323
LaECI	0	0	0	0	0	0	0	0	0	0	0
LCI	1,990	2125	1926	1,897	1,974	1,923	1,878	1,840	1,702	1,611	1,721
LECI	2,225	2103	2188	2,202	2,192	1,911	1,942	1,937	1,939	1,868	1,851
LOCI	1,904	2350	2311	2,366	2,426	2,459	2,281	2,172	2,086	1,864	2,211
LORCI	2,041	1993	2071	2,337	2,313	2,163	1,886	1,520	0	0	0
MACI	2,483	2552	2589	2,599	2,111	2,088	1,898	1,705	1,416	1,313	68
MANCI	2,655	2588	2230	2,380	2,542	2,306	1,830	0	0	0	0
MCI	2,144	2087	2224	2,284	2,210	1,789	1,788	1,951	1,951	1,964	2,162
MEPRC	331	349	342	208	0	0	0	0	0	0	0
NEPRC	638	631	655	638	651	530	380	458	368	33	0
NCCI	2,226	2252	2262	0	0	0	0	0	0	0	0
NCCTF	0	0	0	0	0	0	0	0	0	0	0
NCI	2,128	0	0	0	0	0	0	0	0	0	0
OCF MALE	150	145	211	48	0	0	0	0	0	0	0
OCF FEMAL	0	0	0	0	0	0	0	0	0	0	0
OCI	2,056	2242	2430	2,396	2,285	2,266	2,169	2,146	1,820	1,625	2,071
ORW	1,716	1673	1531	1,418	1,374	1,458	1,334	1,261	1,375	1,261	1,193
ORW MALES	0	0	190	249	241	0	0	0	0	0	0
OSP	0	0	0	0	0	0	0	1,128	2,359	2,339	2,738
PCI	1,950	1956	1906	1,890	2,028	1,972	1,542	1,712	1,420	1,393	1,242
RCI	2,771	2731	2828	2,834	2,687	2,506	2,278	2,108	1,688	1,475	313
RICI	0	0	0	0	0	0	0	0	0	0	0
SCI/SOTC	1,743	1755	1797	1,801	1,912	1,999	1,477	1,517	1,436	1,468	1,445
SOCF	1,410	1176	1009	1,160	1,073	1,832	1,552	2,202	2,107	2,106	2,412
TCI	1,442	1389	1272	955	940	0	0	0	0	0	0
TCI FEMALE	0	0	0	0	0	0	0	0	0	0	0
TOCI	0	0	0	0	0	0	0	0	0	0	0
WCI	1,306	1472	1522	1,578	1,462	1,432	1,324	1,087	146	90	0
TOTAL	46,995	45,036	43,158	40,784	39,396	37,116	33,353	31,862	28,076	24,750	23,289

FIGURE 11. INSTITUTION POPULATION TREND FY 1997 - 1987

