



Ohio Department of Rehabilitation and Correction

1050 Freeway Drive North
Columbus, OH 43229

Ted Strickland, Governor

www.drc.state.oh.us

Terry Collins, Director

TO: ALL CONCERNED
FROM: SENARATH DASSANAYAKA, SENIOR RESEARCHER
 BUREAU OF RESEARCH
 OFFICE OF POLICY
DATE: 1/25/2007

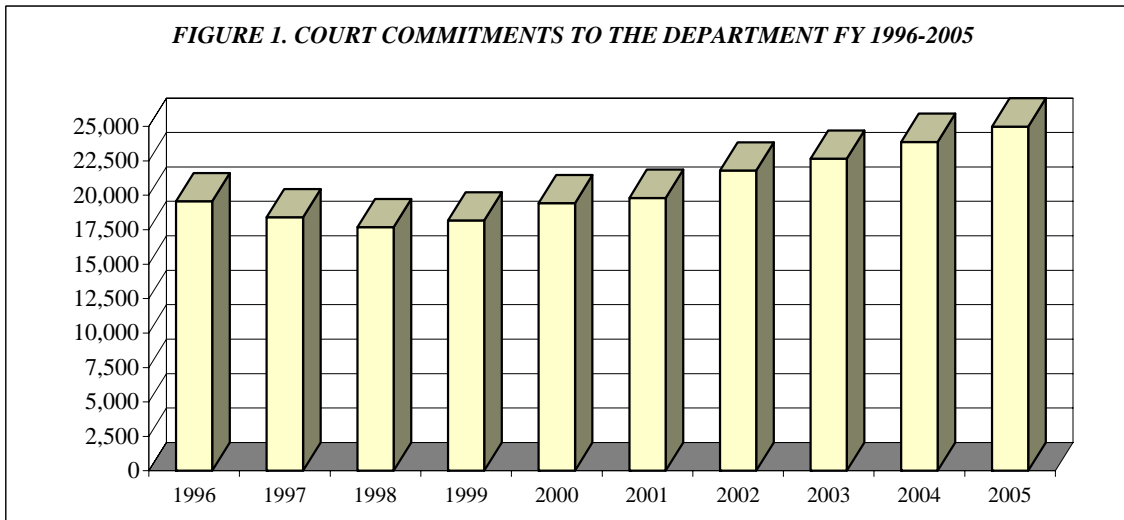
SUBJECT: REVISED FISCAL YEAR 2005 SUMMARY OF INSTITUTION STATISTICS

TOTAL COURT COMMITMENTS TO THE OHIO DEPARTMENT OF REHABILITATION AND CORRECTION:

OFFICIAL COMMITMENT TOTALS			
CRC RECEPTION - MALE	12,427	MALE INTAKE	21,841
LORCI RECEPTION - MALE	9,414	FEMALE INTAKE	3,144
ORW RECEPTION - FEMALE	3,144	TOTAL	24,985
TOTAL	24,985		

COURT COMMITMENTS TO THE DEPARTMENT FY 1995-2004									
1996	1997	1998	1999	2000	2001	2002	2003	2004	2005
19,566	18,404	17,681	18,165	19,418	19,801	21,787	22,649	23,866	24,985

FIGURE 1. COURT COMMITMENTS TO THE DEPARTMENT FY 1996-2005

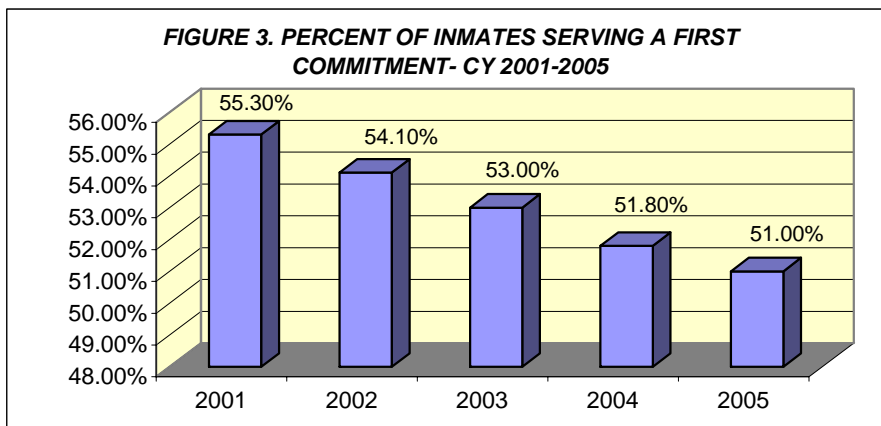
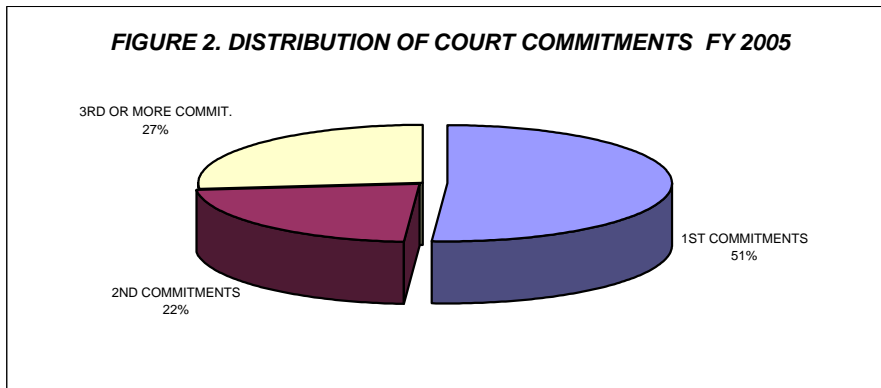


NUMBER OF COMMITMENTS TO THE DEPARTMENT								
FY 2005*	CRC MALE	LORCI MALE	MALE N	MALE %	ORW FEMALE	FEMALE %	TOTAL N	TOTAL %
1ST COMMITMENTS	6,433	4,189	10,622	48.6%	2,110	67.1%	12,732	51.0%
2ND COMMITMENTS	2,809	2,219	5,028	23.0%	574	18.3%	5,602	22.4%
3RD OR MORE COMMI	3,185	3,006	6,191	28.3%	460	14.6%	6,651	26.6%
TOTAL	12,427	9,414	21,841	100.0%	3,144	100.0%	24,985	100.0%

NUMBER OF COMMITMENTS TO THE DEPARTMENT								
FY 2004*	CRC MALE	LORCI MALE	MALE N	MALE %	ORW FEMALE	FEMALE %	TOTAL N	TOTAL %
1ST COMMITMENTS	6,016	4,417	10,433	49.7%	1,920	66.7%	12,353	51.8%
2ND COMMITMENTS	2,628	2,260	4,888	23.3%	467	16.2%	5,355	22.4%
3RD OR MORE COMMI	2,796	2,870	5,666	27.0%	492	17.1%	6,158	25.8%
TOTAL	11,440	9,547	20,987	100.0%	2,879	100.0%	23,866	100.0%

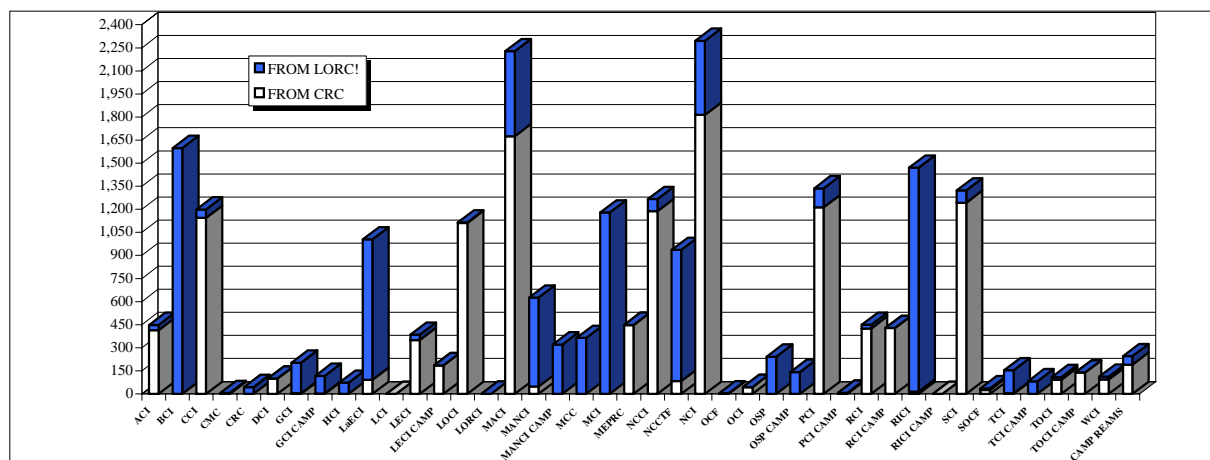
NUMBER OF COMMITMENTS TO THE DEPARTMENT								
FY 2003*	CRC MALE	LORCI MALE	MALE N	MALE %	ORW FEMALE	FEMALE %	TOTAL N	TOTAL %
1ST COMMITMENTS	5,874	4,447	10,321	51.3%	1,673	65.9%	11,994	53.0%
2ND COMMITMENTS	2,454	2,206	4,660	23.2%	438	17.3%	5,098	22.5%
3RD OR MORE COMMI	2,507	2,624	5,131	25.5%	426	16.8%	5,557	24.5%
TOTAL	10,835	9,277	20,112	100.0%	2,537	100.0%	22,649	100.0%

* THIS TABLE IS PRODUCED FROM A DOTS SUMMARY OF PRIOR OHIO COMMITMENTS.



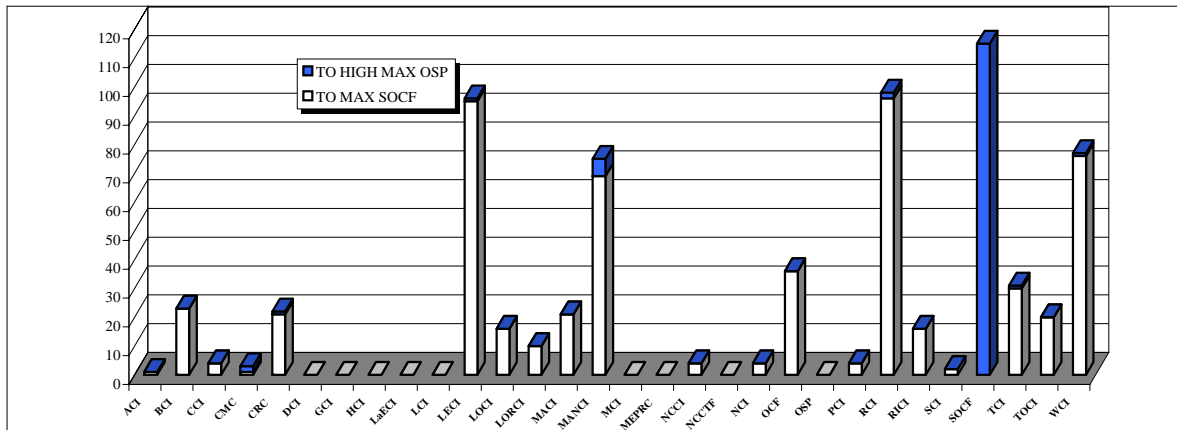
INMATE TRANSFERS FROM MALE RECEPTION CENTERS								
	FROM CRC RECEPTION TO:				FROM LORCI RECEPTION TO:			
	2005	2004	2003	2002	2005	2004	2003	2002
ACI	414	435	303	255	34	38	34	21
BCI	0	27	0	2	1598	1,423	1,116	1,104
CCI	1,144	1,032	882	406	55	36	43	41
CMC	2	7	12	19	4	1	11	4
CRC	0	0	0	0	44	15	31	9
DCI	100	163	250	288	0	1	16	0
GCI	4	0	0	59	198	394	75	106
GCI CAMP	3	0	0	0	114	31	0	0
HCI	0	87	88	46	72	70	68	40
LaECI	91	0	9	14	913	879	683	702
LCI	0	0	447	768	0	0	11	39
LECI	350	547	558	368	34	19	3	10
LECI CAMP	186	18	18	122	0	0	0	0
LOCI	1,112	860	599	616	3	6	5	5
LORCI	1	2	9	10	0	1	0	0
MACI	1,675	1,792	1,351	1,252	553	880	781	652
MANCI	47	30	63	71	579	804	744	418
MANCI CAMP	0	1	0	4	321	142	204	396
MCC	0	0	0	0	364	159	193	362
MCI	1	3	8	3	1,178	1,205	873	643
MEPRC	448	442	467	573	0	0	1	32
NCCI	1,187	1,059	521	359	79	13	31	203
NCCTF	83	144	325	424	853	761	609	762
NCI	1,814	1,516	1,453	1,235	481	498	246	7
OCF	0	32	43	22	4	11	21	30
OCI	44	0	0	245	0	0	0	59
OSP	0	16	2	0	242	410	322	68
OSP CAMP	0	1	0	0	142	59	173	352
PCI	1,213	1,858	1,754	1,567	123	383	760	1,014
PCI CAMP	7	0	189	69	0	0	0	0
RCI	425	765	697	391	24	37	15	18
RCI CAMP	428	60	160	176	0	0	0	0
RICI	15	0	15	16	1,455	1,384	1,059	1,131
RICI CAMP	0	0	0	0	0	0	13	15
SCI	1,243	1,326	760	680	80	232	211	114
SOCF	26	12	89	17	10	14	43	41
TCI	4	9	14	5	149	616	634	293
TCI CAMP	0	0	0	0	82	133	141	458
TOCI	91	214	286	185	18	31	2	11
TOCI CAMP	139	32	36	112	0	1	8	8
WCI	93	109	160	131	19	2	1	7
CAMP REAMS	190	41	54	123	55	41	55	191
TOTAL	12,580	12,640	11,622	10,633	9,880	10,730	9,236	9,366

FIGURE 4. INMATES RECEIVED FROM CRC AND LORCI - FY 2005



DISCIPLINARY AND ADMINISTRATIVE TRANSFERS									
	FROM LESSER CUSTODY TO:				FROM HIGHER TO LESSER CUSTODY				
	LEVEL 5 (HI MAX)		LEVEL 4 (MAX)		LEVEL 5 (HI MAX)		LEVEL 4 (MAX)		
	(OSP)		(SOCF)		(OSP)		(SOCF)		
	2005	2004	2005	2004	2005	2004	2005	2004	2003
ACI	0	0	1	0	0	0	0	0	1
BCI	0	0	23	13	0	0	16	8	11
CCI	0	0	4	9	0	0	0	0	0
CMC	2	0	1	4	1	2	1	8	3
CRC	1	1	21	11	3	2	33	4	10
DCI	0	0	0	0	0	0	0	0	0
GCI	0	0	0	0	0	0	0	0	0
HCI	0	0	0	0	0	0	0	0	0
LaECI	0	0	0	0	0	0	0	0	1
LCI	0	0	0	1	0	0	0	0	0
LECI	1	3	95	94	5	11	69	187	93
LOCI	0	0	16	16	1	0	7	3	3
LORCI	0	0	10	14	0	0	1	0	0
MACI	0	0	21	7	0	0	1	4	5
MANCI	6	0	69	72	13	16	33	48	90
MCI	0	0	0	1	0	0	0	0	2
MEPRC	0	0	0	0	0	0	0	0	0
NCCI	0	0	4	2	0	0	0	1	2
NCCTF	0	0	0	0	0	0	0	0	0
NCI	0	0	4	4	0	0	0	3	2
OCF	0	0	36	28	0	0	38	29	26
OSP	0	0	0	0	0	0	3	0	0
PCI	0	0	4	2	0	1	0	18	0
RCI	2	0	96	55	13	4	81	102	176
RICI	0	0	16	14	1	0	3	1	1
SCI	0	0	2	8	0	0	1	2	1
SOCF	115	72	0	0	33	47	0	0	0
TCI	1	17	30	17	13	6	20	38	45
TOCI	0	4	20	20	13	4	9	22	41
WCI	1	1	76	58	5	1	65	82	97
TOTAL	129	98	549	450	101	94	381	560	610

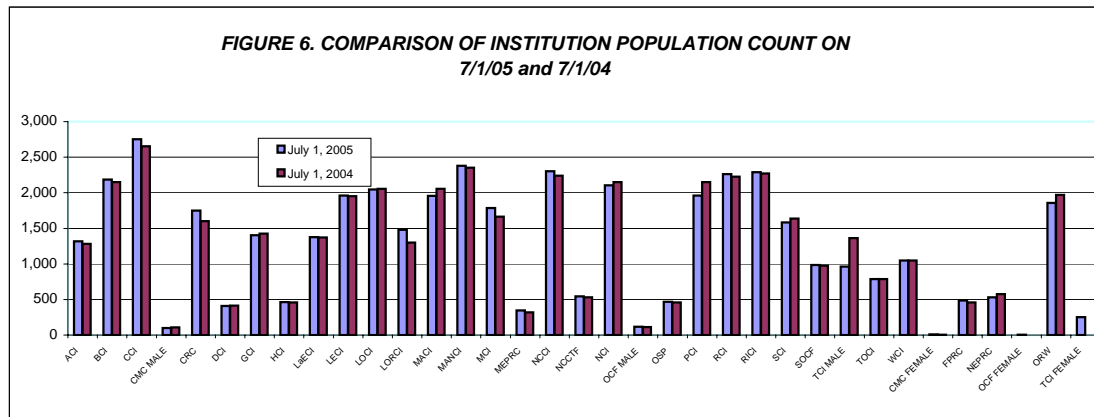
FIGURE 5. TRANSFERS TO LEVEL 5 (HI MAX) AND LEVEL 4 (MAXIMUM) CUSTODY IN FY 2005



END OF FISCAL YEAR INSTITUTIONAL POPULATION COUNT:

INSTITUTION POPULATION TREND (PREVIOUS YEAR COMPARISON)					
		7/1/2005	7/1/2004	DIFFERENCE	
ACI	(Allen Correctional Institution)	1,320	1,282	38	3.0%
BCI	(Belmont Correctional Institution)	2,184	2,148	36	1.7%
CCI	(Chillicothe Correctional Institution)	2,751	2,655	96	3.6%
CMC MALE	(Correctional Medical Center)	98	110	-12	-10.9%
CRC	(Correctional Reception Center)	1,751	1,602	149	9.3%
DCI	(Dayton Correctional Institution)	410	412	-2	-0.5%
GCI	(Grafton Correctional Institution)	1,405	1,424	-19	-1.3%
HCI	(Hocking Correctional Institution)	464	460	4	0.9%
LaECI	(Lake Erie Correctional Institution)	1,378	1,373	5	0.4%
LCI	(Lima Correctional Institution)	0	0	0	0.0%
LECI	(Lebanon Correctional Institution)	1,963	1,952	11	0.6%
LOCI	(London Correctional Institution)	2,047	2,054	-7	-0.3%
LORCI	(Lorain Correctional Institution)	1,479	1,298	181	13.9%
MACI	(Madison Correctional Institution)	1,957	2,056	-99	-4.8%
MANCI	(Mansfield Correctional Institution)	2,378	2,353	25	1.1%
MCI	(Marion Correctional Institution)	1,787	1,663	124	7.5%
MEPRC	(Montgomery Education & Pre-Release Center)	345	319	26	8.2%
NCCI	(North Central Correctional Institution)	2,303	2,240	63	2.8%
NCCTF	(North Coast Correctional Treatment Facility)	546	530	16	3.0%
NCI	(Noble Correctional Institution)	2,103	2,149	-46	-2.1%
OCF MALE	(Oakwood Correctional Facility)	119	114	5	4.4%
OSP	(Ohio State Penitentiary)	466	460	6	1.3%
PCI	(Pickaway Correctional Institution)	1,960	2,152	-192	-8.9%
RCI	(Ross Correctional Institution)	2,261	2,228	33	1.5%
RICI	(Richland Correctional Institution)	2,291	2,273	18	0.8%
SCI	(Southeastern Correctional Institution)	1,583	1,636	-53	-3.2%
SOCF	(Southern Ohio Correctional Facility)	984	978	6	0.6%
TCI	(Trumbull Correctional Institution)	963	1,365	-402	-29.5%
TOCI	(Toledo Correctional Institution)	787	789	-2	-0.3%
WCI	(Warren Correctional Institution)	1,047	1,048	-1	-0.1%
MALE TOTAL		41,130	41,123	7	0.0%

CMC FEMA	(Correctional Medical Center)	10	4	6	150.0%
FPRC	(Franklin Pre-Release Center)	484	460	24	5.2%
NEPRC	(Northeast Pre-Release Center)	532	577	-45	-7.8%
OCF FEMAL	(Oakwood Correctional Facility)	3	1	2	200.0%
ORW	(Ohio Reformatory for Women)	1857	1,969	-112	-5.7%
TCI FEMAL	(Trumbull Correctional Institution)	254	0	254	0.0%
FEMALE TOTAL		3140	3,011	129	4.3%
COMBINED MALE / FEMALE TOTAL		44,270	44,134	136	0.3%



RELEASES AND RETURNS:

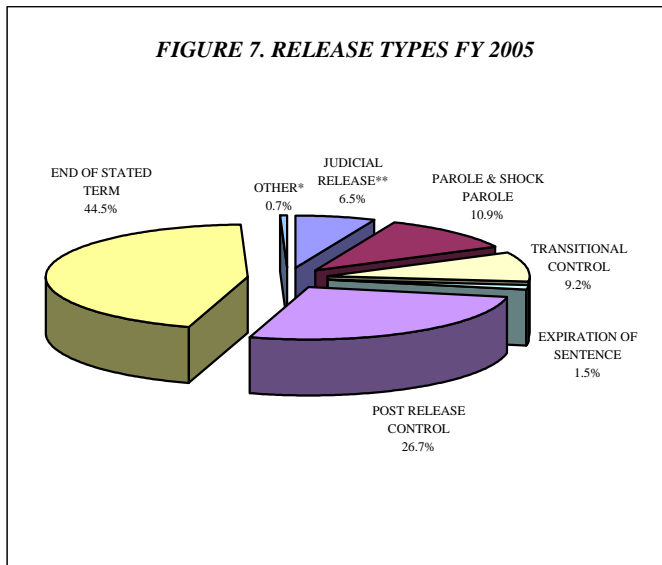
INSTITUTIONAL STATISTICS					
	FY 2005 FEMALE	FY 2005 MALE	FY 2005 TOTAL	FY 2004 TOTAL	FY 2003 TOTAL
RELEASED BY:					
SUSPENDED SENTENCE	1	32	33	18	49
VACATED SENTENCE	4	11	15	8	8
REGULAR PAROLE	91	2896	2,987	5,391	4,200
SHOCK PAROLE	1	1	2	6	3
JUDICIAL RELEASE	371	1361	1,732	1,740	1,559
POST RELEASE CONTROL	706	6601	7,307	7,818	9,326
TRANSITIONAL CONTROL	266	2246	2,512	1,794	1,320
EXPIRATION OF SENTENCE	108	301	409	653	950
END OF STATED TERM	1566	10602	12,168	11,105	8,896
APPEALS BOND	7	18	25	32	21
ESCAPES (from the Office of Prisons)	0	6	6	6	1
DEATHS (from the Bureau of Medical Services)	3	132	135	108	101
TOTAL RELEASED	3,124	24,207	27,331	28,679	26,434

RETURNED BY:					
PAROLE VIOLATION (TECH.) ¹	22	670	692	936	1,073
JUDICIAL RELEASE VIOLATION	105	599	704	679	597
POST RELEASE CONTROL VIOLATION ¹	94	1568	1,662	1,907	1,828
TRANSITIONAL CONTROL VIOLATION	44	175	219	155	146
REACTIVATED SUSPENDED SENTENCE	7	21	28	20	38
ESCAPES RETURNED	0	6	6	6	1
APPEALS BOND	6	9	15	18	6
TOTAL RETURNED	278	3,048	3,326	3,721	3,689

¹ Numbers from DOTS. PRC and Parole offenders being held at reception prior to a violation hearing have caused errors in the monthly report totals, so monthly totals are not summed for this report.

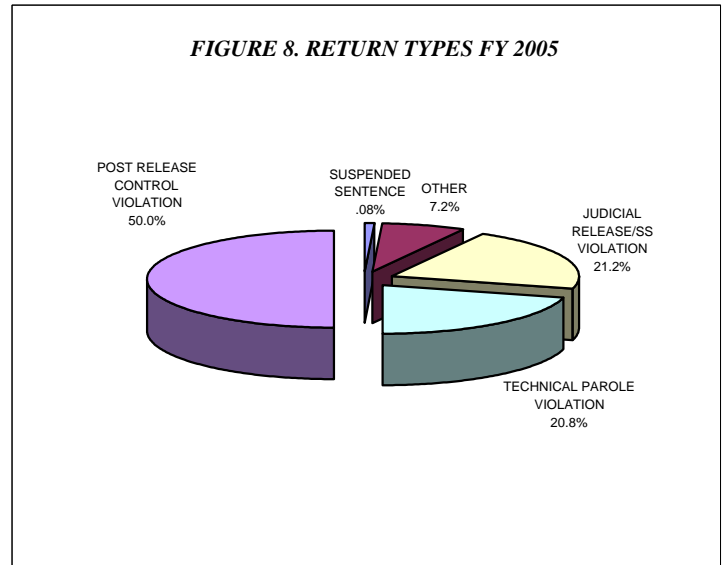
PAROLE VIOLATORS RECOMMISSIONED²	13	758	771	712	744
PRC FELONY VIOLATOR²	49	803	852	1,075	1,400

² PVR and PRC Felony Violator numbers from DOTS.



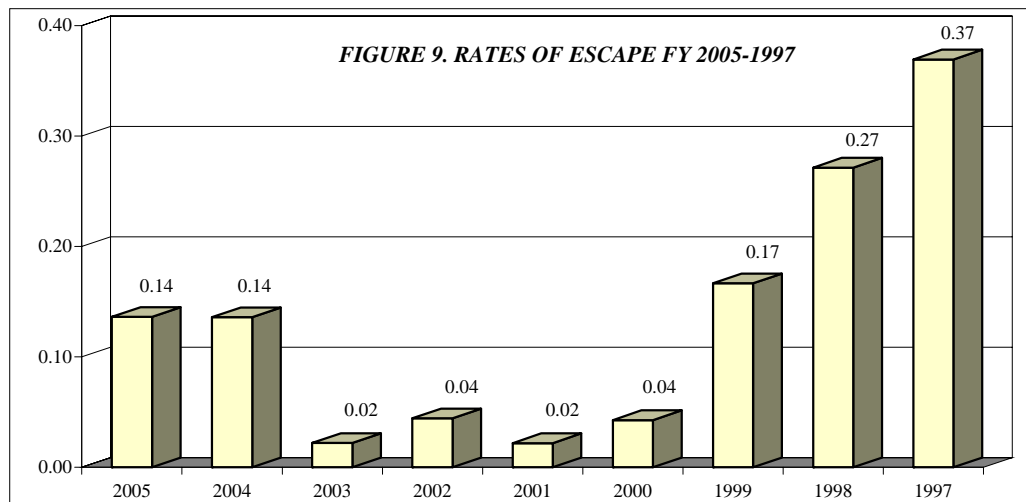
*Other includes the following releases: vacated sentence, appeals bond, escapes and deaths.

**Includes offenders released on suspended sentence.



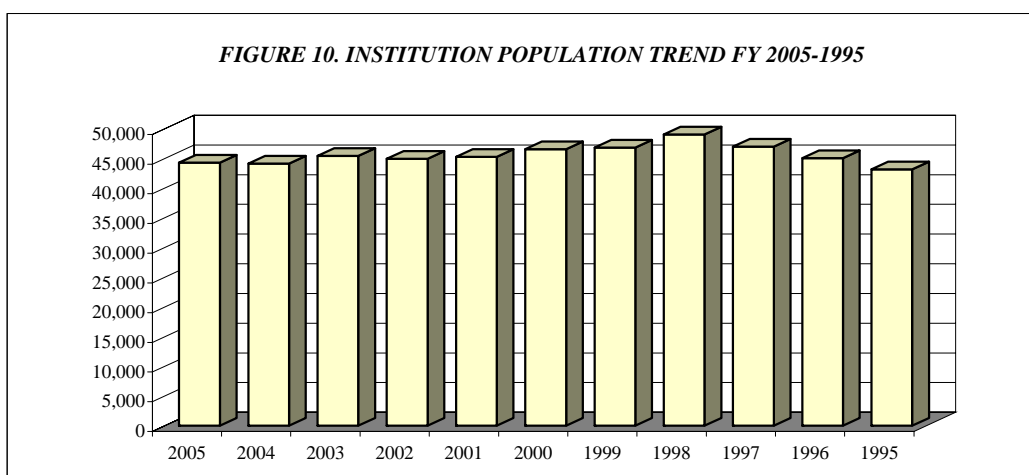
***Other includes returns for the following: transitional control violation, return from appeals bond and captured escapes.

ESCAPES AND RATES OF ESCAPE									
	2005	2004	2003	2002	2001	2000	1999	1998	1997
ACI	0	0	0	0	0	0	0	2	0
BCI	0	0	0	0	0	0	0	0	1
CCI	0	0	0	0	0	0	2	0	0
CMC	0	0	0	0	0	0	0	0	0
CRC	0	0	0	0	0	0	0	0	0
DCI	1	0	0	0	0	0	0	0	0
FPRC	0	0	0	0	0	0	0	0	0
GCI	0	0	1	0	1	0	1	1	2
HCI	0	0	0	0	0	0	0	0	0
LaECI	0	0	0	0	0	0	0	0	0
LCI	0	0	0	0	0	0	0	0	0
LECI	0	0	0	1	0	0	0	0	0
LOCI	0	0	0	0	0	1	0	2	0
LORCI	0	0	0	0	0	0	0	0	0
MACI	0	0	0	0	0	0	1	0	1
MANCI	1	1	0	0	0	0	1	2	5
MCI	0	0	0	0	0	0	0	1	1
MEPRC	1	0	0	0	0	0	0	0	0
NEPRC	0	0	0	0	0	0	0	0	1
NCCI	0	0	0	0	0	0	0	0	0
NCCTF	0	0	0	0	0	0	0	0	0
NCI	0	0	0	0	0	0	0	0	0
OCF	0	0	0	0	0	0	0	0	0
OCI	0	0	0	0	0	0	0	0	0
ORW	0	0	0	0	0	0	0	0	0
OSP	1	0	0	0	0	0	0	0	0
PCI	0	3	0	0	0	1	1	1	2
RCI	2	1	0	0	0	0	1	2	1
RICI	0	0	0	0	0	0	0	0	0
SCI	0	1	0	1	0	0	1	2	2
SOCF	0	0	0	0	0	0	0	0	0
TCI	0	0	0	0	0	0	0	0	1
TOCI	0	0	0	0	0	0	0	0	0
WCI	0	0	0	0	0	0	0	0	0
TOTAL	6	6	1	2	1	2	8	13	17
AVG. SYSTEM POPULATION FOR YEAR	44,038	44,134	45,175	44,980	45,609	46,690	47,988	47,899	46,031
RATE OF ESCAPE PER 1000 INMA1	0.14	0.14	0.02	0.04	0.02	0.04	0.17	0.27	0.37



INSTITUTION POPULATION TRENDS:

END OF THE YEAR INSTITUTIONAL POPULATION TREND FOR JULY 1, 2004 THROUGH JULY 1, 1995											
	2005	2004	2003	2002	2001	2000	1999	1998	1997	1996	1995
ACI	1,320	1,282	1,227	1,173	1,152	1,328	1,401	1,421	1,375	1,294	1,404
BCI	2,184	2,148	2,120	2,080	2,040	1,901	2,423	2,650	2,355	2,252	283
CCI	2,751	2,655	2,579	2,264	2,246	2,195	2,448	2,854	2,628	2,582	2,620
CMC MALE	98	110	106	101	99	146	132	146	135	153	147
CMC FEMA	10	4	6	2	5	2	3	5	5	8	5
CRC	1,751	1,602	1,916	1,858	1,558	1,733	1,667	2,304	2,155	2,142	2,240
DCI	410	412	459	474	472	473	474	483	486	485	484
FPRC	484	460	457	468	468	438	459	474	479	490	471
GCI	1,405	1,424	1,346	1,334	1,342	1,450	1,593	1,699	1,635	1,621	1,575
HCI/HCF	464	460	447	423	408	417	436	447	433	440	435
LaECI	1,378	1,373	1,388	1,369	1,362	999	0	0	0	0	0
LCI	0	0	496	1,566	1,485	1,549	1,650	1,937	1,990	2,125	1,926
LECI	1,963	1,952	1,728	1,625	1,680	1,875	2,192	2,307	2,225	2,103	2,188
LOCI	2,047	2,054	2,027	2,009	2,069	1,915	1,857	1,946	1,904	2,350	2,311
LORCI	1,479	1,298	1,954	1,632	1,443	1,548	1,676	2,116	2,041	1,993	2,071
MACI	1,957	2,056	2,110	2,063	2,009	2,093	2,471	2,601	2,483	2,552	2,589
MANCI	2,378	2,353	2,373	2,276	2,109	2,319	2,671	2,696	2,655	2,588	2,230
MCI	1,787	1,663	1,712	1,705	1,837	1,782	1,911	2,222	2,144	2,087	2,224
MEPRC	345	319	328	327	262	328	322	347	331	349	342
NEPRC	532	577	600	631	495	590	583	634	638	631	655
NCCI	2,303	2,240	2,199	2,080	1,955	2,145	2,280	2,312	2,226	2,252	2,262
NCCTF	546	530	533	567	554	549	0	0	0	0	0
NCI	2,103	2,149	1,964	1,854	1,850	2,014	2,054	2,397	2,128	0	0
OCF MALE	119	114	131	165	175	130	156	141	150	145	211
OCF FEMA	3	1	0	8	5	8	9	5	0	0	0
OCI	0	0	0	0	1,743	1,920	1,935	2,038	2,056	2,242	2,430
ORW	1,857	1,969	1,827	1,765	1,726	1,807	1,802	1,780	1,716	1,673	1,531
ORW MALE	0	0	0	0	0	0	0	0	0	0	190
OSP	466	460	505	508	558	610	616	285	0	0	0
PCI	1,960	2,152	2,251	2,057	1,815	1,903	1,920	1,959	1,950	1,956	1,906
RCI	2,261	2,228	2,333	2,114	2,224	2,359	2,508	2,751	2,771	2,731	2,828
RICI	2,291	2,273	2,238	2,271	2,043	2,183	1,238	0	0	0	0
SCI	1,583	1,636	1,563	1,434	1,332	1,718	1,677	1,769	1,743	1,755	1,797
SOCF	984	978	1,230	1,399	1,438	1,409	1,436	1,481	1,410	1,176	1,009
TCI MALE	963	1,365	1,396	1,429	1,395	1,411	1,429	1,457	1,442	1,389	1,272
TCI FEMAL	254	0	0	0	0	0	0	0	0	0	0
TOCI	787	789	797	766	696	0	0	0	0	0	0
WCI	1,047	1,048	1,056	1,120	1,194	1,290	1,377	1,365	1,306	1,472	1,522
TOTAL	44,270	44,134	45,402	44,917	45,244	46,537	46,806	49,029	46,995	45,036	43,158



END OF THE YEAR INSTITUTIONAL POPULATION TREND FOR JULY 1, 1994 THROUGH JULY 1, 1986									
	1994	1993	1992	1991	1990	1989	1988	1987	1986
ACI	1,417	1,171	1,111	979	917	753	644	59	0
CCI	2,791	2,794	2,625	2,456	2,325	2,064	1,864	2,975	2,935
CLEV. P.R.	0	0	0	0	0	0	49	41	0
CMC MALE	148	0	0	0	0	0	0	0	0
CMC FEMA	0	0	0	0	0	0	0	0	0
CRC	2,182	2,331	2,198	2,009	1,683	1,534	1,005	0	0
DCI	481	493	480	468	467	480	456	464	0
FPRC	456	428	364	356	344	322	0	0	0
GCI	1,620	1,317	1,307	1,121	1,054	793	0	0	0
HCI/HCF	449	441	397	405	328	317	322	323	323
LCI	1,897	1,974	1,923	1,878	1,840	1,702	1,611	1,721	1,704
LECI	2,202	2,192	1,911	1,942	1,937	1,939	1,868	1,851	2,095
LOCI	2,366	2,426	2,459	2,281	2,172	2,086	1,864	2,211	2,178
LORCI	2,337	2,313	2,163	1,886	1,520	0	0	0	0
MACI	2,599	2,111	2,088	1,898	1,705	1,416	1,313	68	0
MANCI	2,380	2,542	2,306	1,830	0	0	0	0	0
MCI	2,284	2,210	1,789	1,788	1,951	1,951	1,964	2,162	2,121
MEPRC	208	0	0	0	0	0	0	0	0
NEPRC	638	651	530	380	458	368	33	0	0
OCF MALE	48	0	0	0	0	0	0	0	0
OCF FEMA	0	0	0	0	0	0	0	0	0
OCI	2,396	2,285	2,266	2,169	2,146	1,820	1,625	2,071	1,903
ORW	1,418	1,374	1,458	1,334	1,261	1,375	1,261	1,193	919
ORW MALE	249	241	0	0	0	0	0	0	0
OSR	0	0	0	0	1,128	2,359	2,339	2,738	2,680
PCI	1,890	2,028	1,972	1,542	1,712	1,420	1,393	1,242	1,250
RCI	2,834	2,687	2,506	2,278	2,108	1,688	1,475	313	0
SCI/SOTC	1,801	1,912	1,999	1,477	1,517	1,436	1,468	1,445	1,137
SOCF	1,160	1,073	1,832	1,552	2,202	2,107	2,106	2,412	2,376
TCI	955	940	0	0	0	0	0	0	0
WCI	1,578	1,462	1,432	1,324	1,087	146	90	0	0
TOTAL	40,784	39,396	37,116	33,353	31,862	28,076	24,750	23,289	21,621

