



# Ohio Department of Rehabilitation and Correction

1050 Freeway Drive North  
Columbus, OH 43229

Ted Strickland, Governor

www.drc.state.oh.us

Terry Collins, Director

**TO:** ALL CONCERNED  
**FROM:** SENARATH DASSANAYAKA, SENIOR RESEARCHER  
 BUREAU OF RESEARCH  
 OFFICE OF POLICY  
**DATE:** 1/25/2007  
**SUBJECT:** REVISED FISCAL YEAR 2004 SUMMARY OF INSTITUTION STATISTICS

**TOTAL COURT COMMITMENTS TO THE OHIO DEPARTMENT OF REHABILITATION AND CORRECTION:**

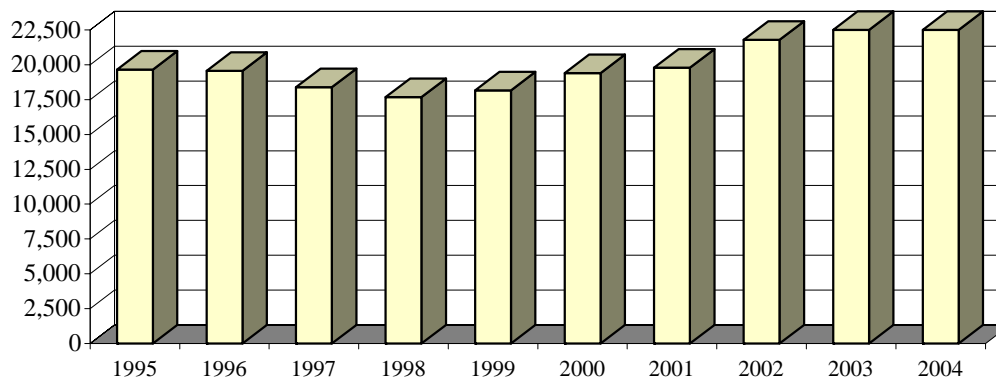
<b>OFFICIAL COMMITMENT TOTALS</b>			
CRC RECEPTION - MALE	11,351	MALE INTAKE	20,987
LORCI RECEPTION - MALE	9,211	FEMALE INTAKE	2,879
ORW RECEPTION - FEMALE	2,879	<b>TOTAL</b>	<b>23,866</b>
RECEIVED AT OTHER INSTITUTIONS	425		
<b>TOTAL</b>	<b>23,866</b>		

<b>SENATE BILL 2 COMMITMENTS*</b>		
	MOST SERIOUS OFFENSE IS A SB2 OFFENSE	MOST SERIOUS OFFENSE IS A PRE-SB2 OFFENSE
MALE INTAKE	20,837	150
FEMALE INTAKE	2,850	29
<b>TOTAL</b>	<b>23,687</b>	<b>179</b>

\* THESE TOTALS ARE INCLUDED IN THE OFFICIAL COMMITMENT TOTALS.

<b>COURT COMMITMENTS TO THE DEPARTMENT FY 1995-2004</b>									
1995	1996	1997	1998	1999	2000	2001	2002	2003	2004
19,669	19,566	18,404	17,681	18,165	19,418	19,801	21,787	22,649	23,866

**FIGURE 1. COURT COMMITMENTS TO THE DEPARTMENT FY 1995-2004**



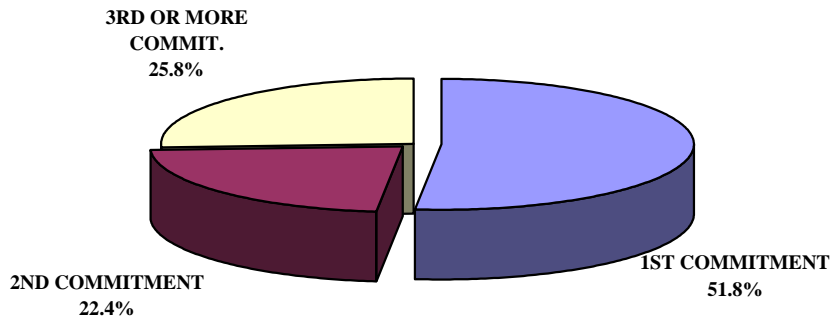
<b>NUMBER OF COMMITMENTS TO THE DEPARTMENT</b>								
<b>FY 2004*</b>	<b>CRC MALE</b>	<b>LORCI MALE</b>	<b>MALE N</b>	<b>MALE %</b>	<b>ORW FEMALE</b>	<b>FEMALE %</b>	<b>TOTAL N</b>	<b>TOTAL %</b>
1ST COMMITMENTS	6,016	4,417	10,433	49.7%	1920	66.7%	12,353	51.8%
2ND COMMITMENTS	2,628	2,260	4,888	23.3%	467	16.2%	5,355	22.4%
3RD OR MORE COMMIT.	2,796	2,870	5,666	27.0%	492	17.1%	6,158	25.8%
<b>TOTAL</b>	<b>11,440</b>	<b>9,547</b>	<b>20,987</b>	<b>100.0%</b>	<b>2,879</b>	<b>100.0%</b>	<b>23,866</b>	<b>100.0%</b>

<b>NUMBER OF COMMITMENTS TO THE DEPARTMENT</b>								
<b>FY 2003*</b>	<b>CRC MALE</b>	<b>LORCI MALE</b>	<b>MALE N</b>	<b>MALE %</b>	<b>ORW FEMALE</b>	<b>FEMALE %</b>	<b>TOTAL N</b>	<b>TOTAL %</b>
1ST COMMITMENTS	5,874	4,447	10,321	51.3%	1,673	65.9%	11,994	53.0%
2ND COMMITMENTS	2,454	2,206	4,660	23.2%	438	17.3%	2,644	11.7%
3RD OR MORE COMMIT.	2,507	2,624	5,131	25.5%	426	16.8%	5,557	24.5%
<b>TOTAL</b>	<b>10,835</b>	<b>9,277</b>	<b>20,112</b>	<b>100.0%</b>	<b>2,537</b>	<b>100.0%</b>	<b>22,649</b>	<b>100.0%</b>

<b>NUMBER OF COMMITMENTS TO THE DEPARTMENT</b>								
<b>FY 2002*</b>	<b>CRC MALE</b>	<b>LORCI MALE</b>	<b>MALE N</b>	<b>MALE %</b>	<b>ORW FEMALE</b>	<b>FEMALE %</b>	<b>TOTAL N</b>	<b>TOTAL %</b>
1ST COMMITMENTS	5,662	4,454	10,116	52.6%	1,681	66.3%	11,797	54.1%
2ND COMMITMENTS	2,213	2,144	4,357	22.6%	413	16.3%	4,770	21.9%
3RD OR MORE COMMIT.	2,229	2,548	4,777	24.8%	443	17.5%	5,220	24.0%
<b>TOTAL</b>	<b>10,104</b>	<b>9,146</b>	<b>19,250</b>	<b>100.0%</b>	<b>2,537</b>	<b>100.0%</b>	<b>21,787</b>	<b>100.0%</b>

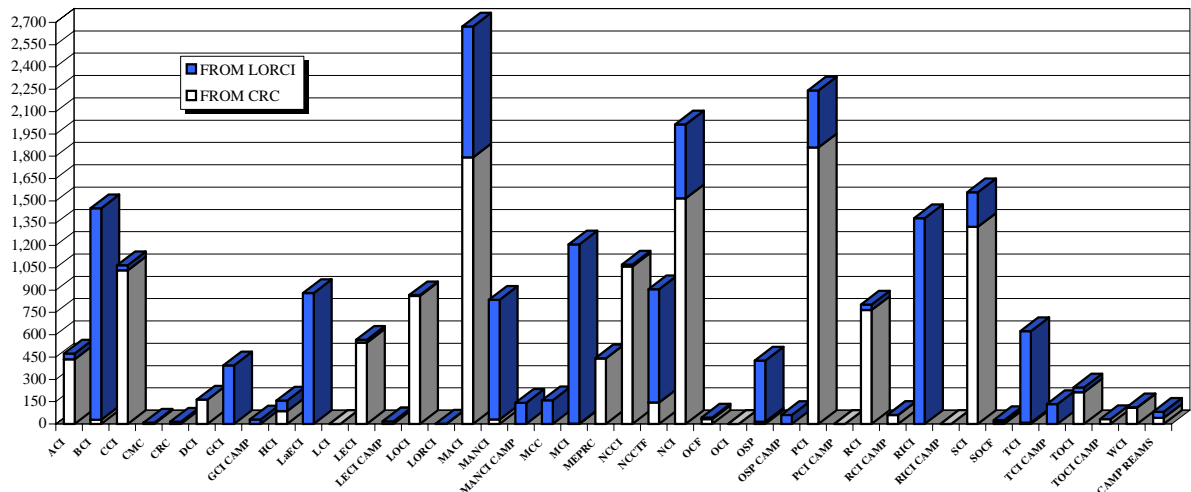
\* THIS TABLE IS PRODUCED FROM A DOTS SUMMARY OF PRIOR OHIO COMMITMENTS.

**FIGURE 2. DISTRIBUTION OF COURT COMMITMENTS FY 2004**



<b>INMATE TRANSFERS FROM MALE RECEPTION CENTERS</b>								
	<b>FROM CRC RECEPTION TO:</b>				<b>FROM LORCI RECEPTION TO:</b>			
	<b>2004</b>	<b>2003</b>	<b>2002</b>	<b>2001</b>	<b>2004</b>	<b>2003</b>	<b>2002</b>	<b>2001</b>
ACI	435	303	255	85	38	34	21	22
BCI	27	0	2	2	1,423	1,116	1,104	1,184
CCI	1,032	882	406	546	36	43	41	12
CMC	7	12	19	1	1	11	4	3
CRC	0	0	0	0	15	31	9	22
DCI	163	250	288	228	1	16	0	0
GCI	0	0	59	10	394	75	106	39
GCI CAMP	0	0	0	0	31	0	0	0
HCI	87	88	46	58	70	68	40	46
LaECI	0	9	14	34	879	683	702	643
LCI	0	447	768	674	0	11	39	5
LECI	547	558	368	246	19	3	10	3
LECI CAMP	18	18	122	162	0	0	0	0
LOCI	860	599	616	803	6	5	5	1
LORCI	2	9	10	12	1	0	0	41
MACI	1,792	1,351	1,252	1,247	880	781	652	703
MANCI	30	63	71	23	804	744	418	263
MANCI CAMP	1	0	4	0	142	204	396	329
MCC	0	0	0	1	159	193	362	386
MCI	3	8	3	7	1,205	873	643	623
MEPRC	442	467	573	440	0	1	32	30
NCCI	1,059	521	359	310	13	31	203	57
NCCTF	144	325	424	426	761	609	762	665
NCI	1,516	1,453	1,235	1096	498	246	7	113
OCF	32	43	22	28	11	21	30	15
OCI	0	0	245	558	0	0	59	85
OSP	16	2	0	0	410	322	68	53
OSP CAMP	1	0	0	0	59	173	352	271
PCI	1,858	1,754	1,567	1,434	383	760	1,014	1038
PCI CAMP	0	189	69	20	0	0	0	0
RCI	765	697	391	334	37	15	18	28
RCI CAMP	60	160	176	163	0	0	0	0
RICI	0	15	16	12	1,384	1,059	1,131	1065
RICI CAMP	0	0	0	11	0	13	15	12
SCI	1,326	760	680	459	232	211	114	124
SOCF	12	89	17	39	14	43	41	52
TCI	9	14	5	0	616	634	293	228
TCI CAMP	0	0	0	12	133	141	458	477
TOCI	214	286	185	204	31	2	11	77
TOCI CAMP	32	36	112	72	1	8	8	58
WCI	109	160	131	106	2	1	7	17
CAMP REAMS	41	54	123	196	41	55	191	98
<b>TOTAL</b>	<b>12,640</b>	<b>11,622</b>	<b>10,633</b>	<b>10,059</b>	<b>10,730</b>	<b>9,236</b>	<b>9,366</b>	<b>8,888</b>

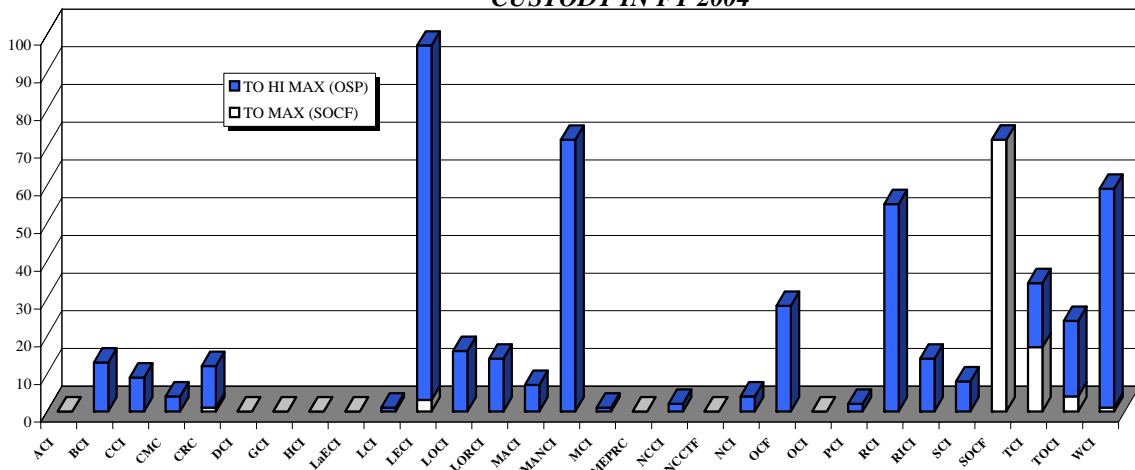
**FIGURE 3. INMATES RECEIVED FROM CRC AND LORCI FY 2004**



**DISCIPLINARY AND ADMINISTRATIVE TRANSFERS**

	FROM LESSER CUSTODY TO:				FROM HIGHER TO LESSER CUSTODY				
	LEVEL 5 (HI MAX) (OSP)		LEVEL 4 (MAX) (SOCF)		LEVEL 5 (HI MAX) (OSP)		LEVEL 4 (MAX) (SOCF)		
	2004	2003	2004	2003	2004	2003	2004	2003	2002
ACI	0	0	0	0	0	0	0	1	1
BCI	0	0	13	18	0	0	8	11	7
CCI	0	0	9	6	0	1	0	0	1
CMC	0	0	4	2	2	1	8	3	2
CRC	1	3	11	23	2	0	4	10	9
DCI	0	0	0	0	0	0	0	0	0
GCI	0	0	0	3	0	0	0	0	1
HCI	0	0	0	0	0	0	0	0	0
LaECI	0	0	0	0	0	0	0	1	1
LCI	0	0	1	3	0	14	0	0	0
LECI	3	14	94	74	11	0	187	93	52
LOCI	0	0	16	17	0	0	3	3	0
LORCI	0	0	14	44	0	0	0	0	11
MACI	0	0	7	23	0	5	4	5	0
MANCI	0	3	72	80	16	0	48	90	65
MCI	0	0	1	10	0	0	0	2	2
MEPRC	0	0	0	0	0	0	0	0	0
NCCI	0	0	2	6	0	0	1	2	2
NCCTF	0	0	0	0	0	0	0	0	0
NCI	0	0	4	6	0	0	3	2	4
OCF	0	0	28	29	0	0	29	26	20
OCI	0	0	0	0	0	0	0	0	1
PCI	0	0	2	0	1	0	18	0	1
RCI	0	0	55	61	4	3	102	176	198
RICI	0	0	14	17	0	2	1	1	6
SCI	0	0	8	11	0	0	2	1	1
SOCF	72	162	0	0	47	126	0	0	0
TCI	17	1	17	14	6	1	38	45	54
TOCI	4	0	20	26	4	1	22	41	20
WCI	1	7	58	70	1	11	82	97	51
<b>TOTAL</b>	<b>98</b>	<b>190</b>	<b>450</b>	<b>543</b>	<b>94</b>	<b>165</b>	<b>560</b>	<b>610</b>	<b>510</b>

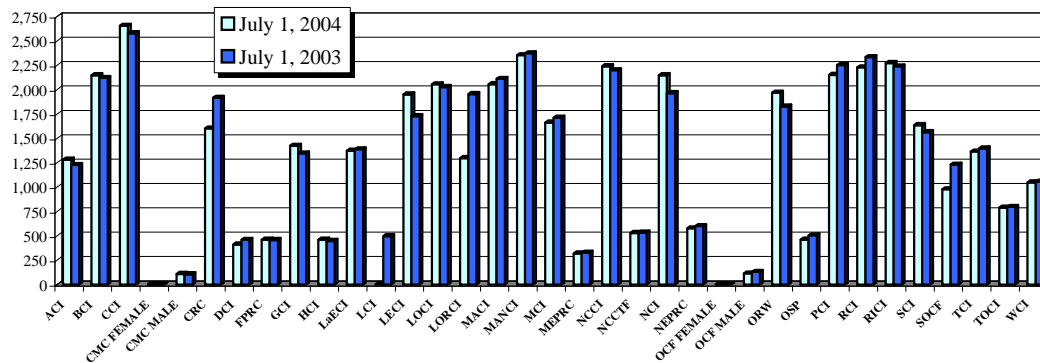
**FIGURE 4. TRANSFERS TO LEVEL 5 (HI MAX) AND LEVEL 4 (MAXIMUM) CUSTODY IN FY 2004**



**END OF FISCAL YEAR INSTITUTIONAL POPULATION COUNT:**

<b>INSTITUTION POPULATION TREND (PREVIOUS YEAR COMPARISON)</b>					
		<b>7/1/2004</b>	<b>7/1/2003</b>	<b>DIFFERENCE</b>	
ACI	(Allen Correctional Institution)	1,282	1,227	55	4.5%
BCI	(Belmont Correctional Institution)	2,148	2,120	28	1.3%
CCI	(Chillicothe Correctional Institution)	2,655	2,579	76	2.9%
CMC MALE	(Correctional Medical Center)	110	106	4	3.8%
CRC	(Correctional Reception Center)	1,602	1,916	-314	-16.4%
DCI	(Dayton Correctional Institution)	412	459	-47	-10.2%
GCI	(Grafton Correctional Institution)	1,424	1,346	78	5.8%
HCI	(Hocking Correctional Institution)	460	447	13	2.9%
LaECI	(Lake Erie Correctional Institution)	1,373	1,388	-15	-1.1%
LCI	(Lima Correctional Institution)	0	496	-496	-100.0%
LECI	(Lebanon Correctional Institution)	1,952	1,728	224	13.0%
LOCI	(London Correctional Institution)	2,054	2,027	27	1.3%
LORCI	(Lorain Correctional Institution)	1,298	1,954	-656	-33.6%
MACI	(Madison Correctional Institution)	2,056	2,110	-54	-2.6%
MANCI	(Mansfield Correctional Institution)	2,353	2,373	-20	-0.8%
MCI	(Marion Correctional Institution)	1,663	1,712	-49	-2.9%
MEPRC	(Montgomery Education & Pre-Release Center)	319	328	-9	-2.7%
NCCI	(North Central Correctional Institution)	2,240	2,199	41	1.9%
NCCTF	(North Coast Correctional Treatment Facility)	530	533	-3	-0.6%
NCI	(Noble Correctional Institution)	2,149	1,964	185	9.4%
OCF MALE	(Oakwood Correctional Facility)	114	131	-17	-13.0%
OSP	(Ohio State Penitentiary)	460	505	-45	-8.9%
PCI	(Pickaway Correctional Institution)	2,152	2,251	-99	-4.4%
RCI	(Ross Correctional Institution)	2,228	2,333	-105	-4.5%
RICI	(Richland Correctional Institution)	2,273	2,238	35	1.6%
SCI	(Southeastern Correctional Institution)	1,636	1,563	73	4.7%
SOCF	(Southern Ohio Correctional Facility)	978	1,230	-252	-20.5%
TCI	(Trumbull Correctional Institution)	1,365	1,396	-31	-2.2%
TOCI	(Toledo Correctional Institution)	789	797	-8	-1.0%
WCI	(Warren Correctional Institution)	1,048	1,056	-8	-0.8%
<b>MALE TOTAL</b>		<b>41,123</b>	<b>42,512</b>	<b>-1,389</b>	<b>-3.3%</b>
CMC FEMALE	(Correctional Medical Center)	4	6	-2	-33.3%
FPRC	(Franklin Pre-Release Center)	460	457	3	0.7%
NEPRC	(Northeast Pre-Release Center)	577	600	-23	-3.8%
OCF FEMALE	(Oakwood Correctional Facility)	1	0	1	0.0%
ORW	(Ohio Reformatory for Women)	1,969	1,827	142	7.8%
<b>FEMALE TOTAL</b>		<b>3,011</b>	<b>2,890</b>	<b>121</b>	<b>4.2%</b>
<b>COMBINED MALE / FEMALE TOTAL</b>		<b>44,134</b>	<b>45,402</b>	<b>-1,268</b>	<b>-2.8%</b>

**FIGURE 5. COMPARISON OF INSTITUTION POPULATION COUNT ON 7/1/04 and 7/1/03**



**RELEASES AND RETURNS:**

<b>INSTITUTIONAL STATISTICS</b>					
	<b>FY 2004 FEMALE</b>	<b>FY 2004 MALE</b>	<b>FY 2004 TOTAL</b>	<b>FY 2003 TOTAL</b>	<b>FY 2002 TOTAL</b>
<b>RELEASED BY:</b>					
SUSPENDED SENTENCE	3	15	18	49	65
VACATED SENTENCE	1	7	8	8	17
REGULAR PAROLE	185	5,206	5,391	4,200	4,753
SHOCK PAROLE	2	4	6	3	6
JUDICIAL RELEASE	373	1,367	1,740	1,559	1,507
POST RELEASE CONTROL	711	7,107	7,818	9,326	8,000
TRANSITIONAL CONTROL	234	1,560	1,794	1,320	1,205
EXPIRATION OF SENTENCE	17	636	653	950	1,099
END OF STATED TERM	1,442	9,663	11,105	8,896	6,835
APPEALS BOND	7	25	32	21	38
ESCAPES (from the Office of Prisons)	0	6	6	1	2
DEATHS (from the Bureau of Medical Services)	4	104	108	101	127
<b>TOTAL RELEASED</b>	<b>2,979</b>	<b>25,700</b>	<b>28,679</b>	<b>26,434</b>	<b>23,654</b>

<b>RETURNED BY:</b>					
PAROLE VIOLATION (TECH.) <sup>1</sup>	26	910	936	1,073	987
JUDICIAL RELEASE VIOLATION	108	571	679	597	559
POST RELEASE CONTROL VIOLATION <sup>1</sup>	83	1,824	1,907	1,828	1,354
TRANSITIONAL CONTROL VIOLATION	40	115	155	146	197
REACTIVATED SUSPENDED SENTENCE	1	19	20	38	87
ESCAPES RETURNED	0	6	6	1	2
APPEALS BOND	2	16	18	6	14
<b>TOTAL RETURNED</b>	<b>260</b>	<b>3,461</b>	<b>3,721</b>	<b>3,689</b>	<b>3,200</b>

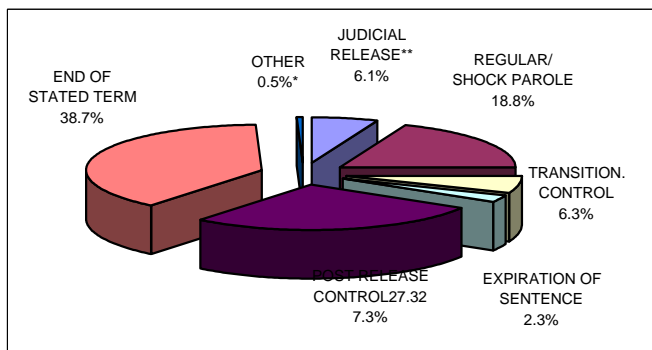
<sup>1</sup> Numbers from DOTS. PRC and Parole offenders being held at reception prior to a violation hearing have caused errors in the monthly report totals, so monthly totals are not summed for this report.

<sup>2</sup> FY 2002 numbers have been adjusted from previous reports to account for these errors.

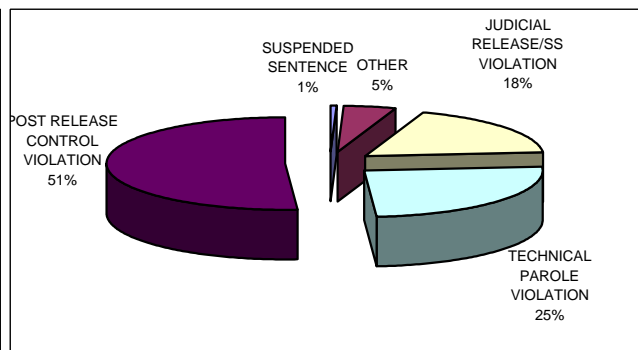
<b>PAROLE VIOLATORS RECOMMISSIONED<sup>2</sup></b>	16	696	712	744
<b>PRC FELONY VIOLATOR<sup>2</sup></b>	72	1,003	1,075	1,400

<sup>2</sup> PVR and PRC Felony Violator numbers from DOTS.

**FIGURE 6. RELEASE TYPES FY 2004**



**FIGURE 7 RETURN TYPE FY 2004**



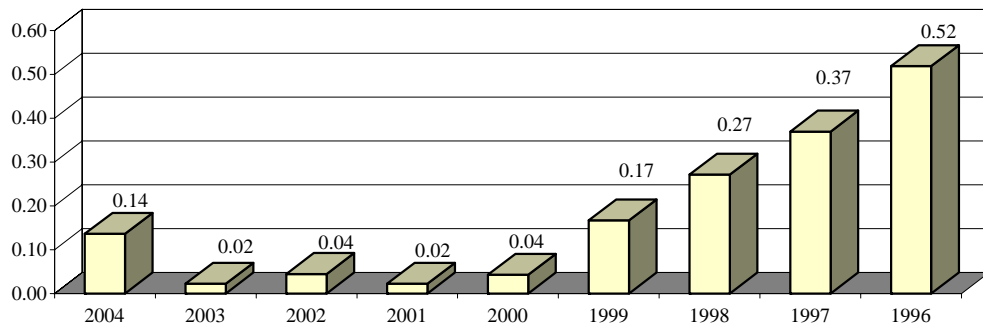
\*Other includes the following releases: vacated sentence, appeals bond, escapes and deaths.

\*\*Includes offenders released on suspended sentence.

\*\*\*Other includes returns for the following: transitional control violation, return from appeals bond and captured escapes.

**ESCAPES AND RATES OF ESCAPE**

	2004	2003	2002	2001	2000	1999	1998	1997	1996
ACI	0	0	0	0	0	0	2	0	0
BCI	0	0	0	0	0	0	0	1	0
CCI	0	0	0	0	0	0	2	0	0
CMC	0	0	0	0	0	0	0	0	0
CRC	0	0	0	0	0	0	0	0	0
DCI	0	0	0	0	0	0	0	0	0
FPRC	0	0	0	0	0	0	0	0	0
GCI	0	1	0	1	0	1	1	2	0
HCI	0	0	0	0	0	0	0	0	0
LaECI	0	0	0	0	0	0	0	0	0
LCI	0	0	0	0	0	0	0	0	0
LECI	0	0	1	0	0	0	0	0	0
LOCI	0	0	0	0	1	0	2	0	2
LORCI	0	0	0	0	0	0	0	0	0
MACI	0	0	0	0	0	1	0	1	2
MANCI	1	0	0	0	0	1	2	5	6
MCI	0	0	0	0	0	0	1	1	0
MEPRC	0	0	0	0	0	0	0	0	0
NEPRC	0	0	0	0	0	0	0	1	1
NCCI	0	0	0	0	0	0	0	0	0
NCCTF	0	0	0	0	0	0	0	0	0
NCI	0	0	0	0	0	0	0	0	0
OCF	0	0	0	0	0	0	0	0	0
OCI	0	0	0	0	0	0	0	0	0
ORW	0	0	0	0	0	0	0	0	0
OSP	0	0	0	0	0	0	0	0	0
PCI	3	0	0	0	1	1	1	2	2
RCI	1	0	0	0	0	1	2	1	5
RICI	0	0	0	0	0	0	0	0	0
SCI	1	0	1	0	0	1	2	2	1
SOCF	0	0	0	0	0	0	0	0	0
TCI	0	0	0	0	0	0	0	1	4
TOCI	0	0	0	0	0	0	0	0	0
WCI	0	0	0	0	0	0	0	0	0
<b>TOTAL</b>	<b>6</b>	<b>1</b>	<b>2</b>	<b>1</b>	<b>2</b>	<b>8</b>	<b>13</b>	<b>17</b>	<b>23</b>
<b>AVG. SYSTEM POPULATION FOR YEAR</b>	<b>44,134</b>	<b>45,175</b>	<b>44,980</b>	<b>45,609</b>	<b>46,690</b>	<b>47,988</b>	<b>47,899</b>	<b>46,031</b>	<b>44,359</b>
<b>RATE OF ESCAPE PER 1000 INMATES</b>	<b>0.14</b>	<b>0.02</b>	<b>0.04</b>	<b>0.02</b>	<b>0.04</b>	<b>0.17</b>	<b>0.27</b>	<b>0.37</b>	<b>0.52</b>

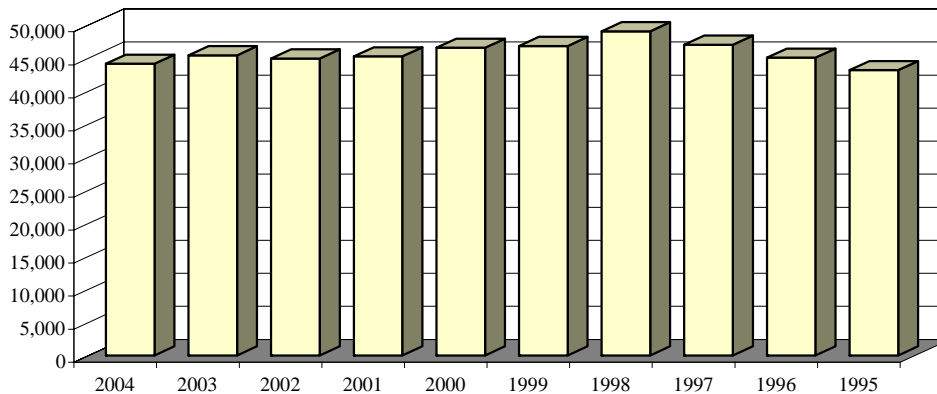


**FIGURE 8. RATES OF ESCAPE FY 2004-1996**

**INSTITUTION POPULATION TRENDS:**

<b>END OF THE YEAR INSTITUTIONAL POPULATION TREND FOR JULY 1, 2004 THROUGH JULY 1, 1995</b>										
	<b>2004</b>	<b>2003</b>	<b>2002</b>	<b>2001</b>	<b>2000</b>	<b>1999</b>	<b>1998</b>	<b>1997</b>	<b>1996</b>	<b>1995</b>
ACI	1,282	1,227	1,173	1,152	1,328	1,401	1,421	1,375	1,294	1,404
BCI	2,148	2,120	2,080	2,040	1,901	2,423	2,650	2,355	2,252	283
CCI	2,655	2,579	2,264	2,246	2,195	2,448	2,854	2,628	2,582	2,620
CMC MALE	110	106	101	99	146	132	146	135	153	147
CMC FEMALE	4	6	2	5	2	3	5	5	8	5
CRC	1,602	1,916	1,858	1,558	1,733	1,667	2,304	2,155	2,142	2,240
DCI	412	459	474	472	473	474	483	486	485	484
FPRC	460	457	468	468	438	459	474	479	490	471
GCI	1,424	1,346	1,334	1,342	1,450	1,593	1,699	1,635	1,621	1,575
HCI/HCF	460	447	423	408	417	436	447	433	440	435
LaECI	1,373	1,388	1,369	1,362	999	0	0	0	0	0
LCI	0	496	1,566	1,485	1,549	1,650	1,937	1,990	2,125	1,926
LECI	1,952	1,728	1,625	1,680	1,875	2,192	2,307	2,225	2,103	2,188
LOCI	2,054	2,027	2,009	2,069	1,915	1,857	1,946	1,904	2,350	2,311
LORCI	1,298	1,954	1,632	1,443	1,548	1,676	2,116	2,041	1,993	2,071
MACI	2,056	2,110	2,063	2,009	2,093	2,471	2,601	2,483	2,552	2,589
MANCI	2,353	2,373	2,276	2,109	2,319	2,671	2,696	2,655	2,588	2,230
MCI	1,663	1,712	1,705	1,837	1,782	1,911	2,222	2,144	2,087	2,224
MEPRC	319	328	327	262	328	322	347	331	349	342
NEPRC	577	600	631	495	590	583	634	638	631	655
NCCI	2,240	2,199	2,080	1,955	2,145	2,280	2,312	2,226	2,252	2,262
NCCTF	530	533	567	554	549	0	0	0	0	0
NCI	2,149	1,964	1,854	1,850	2,014	2,054	2,397	2,128	0	0
OCF MALE	114	131	165	175	130	156	141	150	145	211
OCF FEMALE	1	0	8	5	8	9	5	0	0	0
OCI	0	0	0	1,743	1,920	1,935	2,038	2,056	2,242	2,430
ORW	1,969	1,827	1,765	1,726	1,807	1,802	1,780	1,716	1,673	1,531
ORW MALES	0	0	0	0	0	0	0	0	0	190
OSP	460	505	508	558	610	616	285	0	0	0
PCI	2,152	2,251	2,057	1,815	1,903	1,920	1,959	1,950	1,956	1,906
RCI	2,228	2,333	2,114	2,224	2,359	2,508	2,751	2,771	2,731	2,828
RICI	2,273	2,238	2,271	2,043	2,183	1,238	0	0	0	0
SCI	1,636	1,563	1,434	1,332	1,718	1,677	1,769	1,743	1,755	1,797
SOCF	978	1,230	1,399	1,438	1,409	1,436	1,481	1,410	1,176	1,009
TCI	1,365	1,396	1,429	1,395	1,411	1,429	1,457	1,442	1,389	1,272
TOCI	789	797	766	696	0	0	0	0	0	0
WCI	1,048	1,056	1,120	1,194	1,290	1,377	1,365	1,306	1,472	1,522
<b>TOTAL</b>	<b>44,134</b>	<b>45,402</b>	<b>44,917</b>	<b>45,244</b>	<b>46,537</b>	<b>46,806</b>	<b>49,029</b>	<b>46,995</b>	<b>45,036</b>	<b>43,158</b>

**FIGURE 9. INSTITUTION POPULATION TREND FY 2004-1995**





<b>END OF THE YEAR INSTITUTIONAL POPULATION TREND FOR JULY 1, 1994 THROUGH JULY 1, 1986</b>									
	<b>1994</b>	<b>1993</b>	<b>1992</b>	<b>1991</b>	<b>1990</b>	<b>1989</b>	<b>1988</b>	<b>1987</b>	<b>1986</b>
ACI	1,417	1,171	1,111	979	917	753	644	59	0
CCI	2,791	2,794	2,625	2,456	2,325	2,064	1,864	2,975	2,935
CLEV. P.R.	0	0	0	0	0	0	49	41	0
CMC MALE	148	0	0	0	0	0	0	0	0
CMC FEMALE	0	0	0	0	0	0	0	0	0
CRC	2,182	2,331	2,198	2,009	1,683	1,534	1,005	0	0
DCI	481	493	480	468	467	480	456	464	0
FPRC	456	428	364	356	344	322	0	0	0
GCI	1,620	1,317	1,307	1,121	1,054	793	0	0	0
HCI/HCF	449	441	397	405	328	317	322	323	323
LCI	1,897	1,974	1,923	1,878	1,840	1,702	1,611	1,721	1,704
LECI	2,202	2,192	1,911	1,942	1,937	1,939	1,868	1,851	2,095
LOCI	2,366	2,426	2,459	2,281	2,172	2,086	1,864	2,211	2,178
LORCI	2,337	2,313	2,163	1,886	1,520	0	0	0	0
MACI	2,599	2,111	2,088	1,898	1,705	1,416	1,313	68	0
MANCI	2,380	2,542	2,306	1,830	0	0	0	0	0
MCI	2,284	2,210	1,789	1,788	1,951	1,951	1,964	2,162	2,121
MEPRC	208	0	0	0	0	0	0	0	0
NEPRC	638	651	530	380	458	368	33	0	0
OCF MALE	48	0	0	0	0	0	0	0	0
OCF FEMALE	0	0	0	0	0	0	0	0	0
OCI	2,396	2,285	2,266	2,169	2,146	1,820	1,625	2,071	1,903
ORW	1,418	1,374	1,458	1,334	1,261	1,375	1,261	1,193	919
ORW MALES	249	241	0	0	0	0	0	0	0
OSR	0	0	0	0	1,128	2,359	2,339	2,738	2,680
PCI	1,890	2,028	1,972	1,542	1,712	1,420	1,393	1,242	1,250
RCI	2,834	2,687	2,506	2,278	2,108	1,688	1,475	313	0
SCI/SOTC	1,801	1,912	1,999	1,477	1,517	1,436	1,468	1,445	1,137
SOCF	1,160	1,073	1,832	1,552	2,202	2,107	2,106	2,412	2,376
TCI	955	940	0	0	0	0	0	0	0
WCI	1,578	1,462	1,432	1,324	1,087	146	90	0	0
<b>TOTAL</b>	<b>40,784</b>	<b>39,396</b>	<b>37,116</b>	<b>33,353</b>	<b>31,862</b>	<b>28,076</b>	<b>24,750</b>	<b>23,289</b>	<b>21,621</b>

**FIGURE 10: INSTITUTION POPULATION TREND 1994-1986**

