



# Ohio Department of Rehabilitation and Correction

770 West Broad Street  
Columbus, OH 43222  
614-752-1184

John R. Kasich,  
Governor

[www.drc.ohio.gov](http://www.drc.ohio.gov)

Gary C. Mohr, Director

**TO:** ALL CONCERNED

**FROM:** SENARATH DASSANAYAKA, SENIOR RESEARCHER  
BUREAU OF RESEARCH  
OFFICE OF POLICY

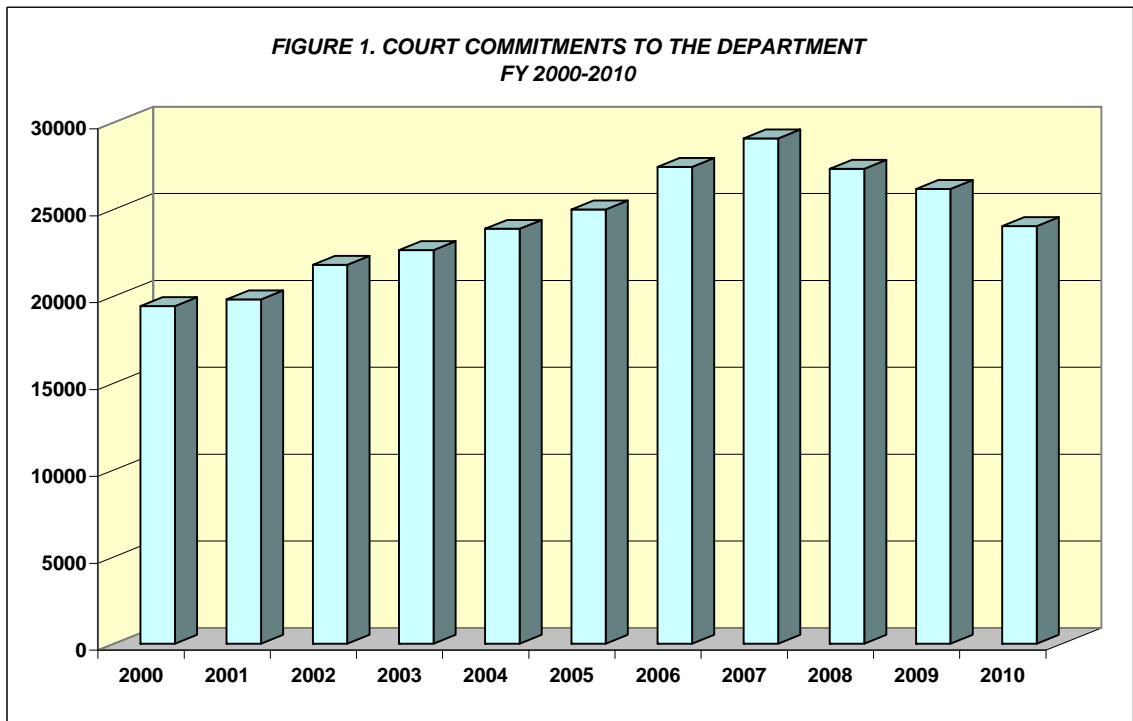
**DATE:** 3/21/2011

**SUBJECT:** FISCAL YEAR 2010 SUMMARY OF INSTITUTION STATISTICS

**TOTAL COURT COMMITMENTS TO THE OHIO DEPARTMENT OF REHABILITATION AND CORRECTION**

<b>OFFICIAL COMMITMENT TOTALS</b>			
CRC RECEPTION - MALE	11,767	MALE INTAKE	20,830
LORCI RECEPTION - MALE	9,063	FEMALE INTAKE	3,193
ORW RECEPTION - FEMALE	3,193	<b>TOTAL</b>	<b>24,023</b>
<b>TOTAL</b>	<b>24,023</b>		

<b>COURT COMMITMENTS TO THE DEPARTMENT FY 1999-2009</b>										
2000	2001	2002	2003	2004	2005	2006	2007	2008	2009	2010
19,418	19,801	21,787	22,649	23,866	24,985	27,431	29,069	27,315	26,165	24,023



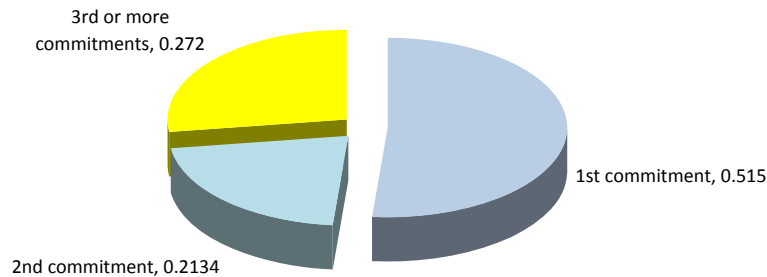
NUMBER OF COMMITMENTS TO THE DEPARTMENT								
FY 2010*	CRC MALE	LORCI MALE	MALE N	MALE %	ORW FEMALE	FEMALE %	TOTAL N	TOTAL %
1ST COMMITMENTS	6,077	4,091	10,168	48.8%	2200	68.9%	12,368	51.5%
2ND COMMITMENTS	2,536	2,007	4,543	21.8%	573	17.9%	5,116	21.3%
3RD OR MORE COMMIT.	3,154	2,965	6,119	29.4%	420	13.2%	6,539	27.2%
<b>TOTAL</b>	<b>11,767</b>	<b>9,063</b>	<b>20,830</b>	<b>100.0%</b>	<b>3,193</b>	<b>100.0%</b>	<b>24,023</b>	<b>100.0%</b>

NUMBER OF COMMITMENTS TO THE DEPARTMENT								
FY 2009*	CRC MALE	LORCI MALE	MALE N	MALE %	ORW FEMALE	FEMALE %	TOTAL N	TOTAL %
1ST COMMITMENTS	6,738	4,398	11,136	48.8%	2378	70.8%	13,514	51.6%
2ND COMMITMENTS	2,915	2,153	5,068	22.2%	523	15.6%	5,591	21.4%
3RD OR MORE COMMIT.	3,486	3,114	6,600	28.9%	460	13.7%	7,060	27.0%
<b>TOTAL</b>	<b>13,139</b>	<b>9,665</b>	<b>22,804</b>	<b>100.0%</b>	<b>3,361</b>	<b>100.0%</b>	<b>26,165</b>	<b>100.0%</b>

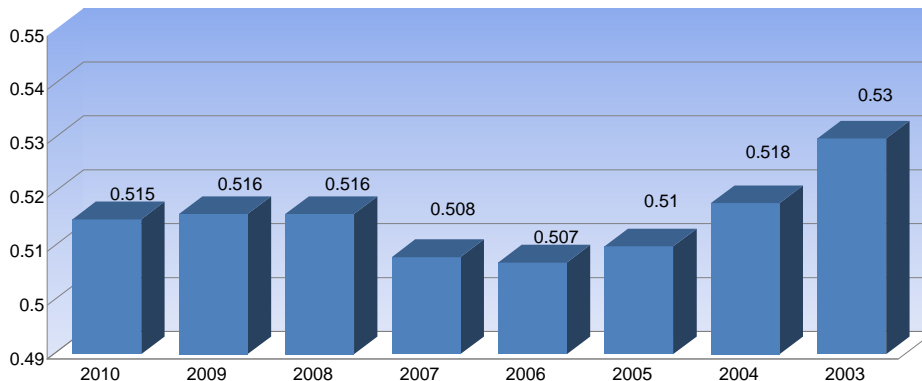
NUMBER OF COMMITMENTS TO THE DEPARTMENT								
FY 2008*	CRC MALE	LORCI MALE	MALE N	MALE %	ORW FEMALE	FEMALE %	TOTAL N	TOTAL %
1ST COMMITMENTS	7,178	4,462	11,640	49.0%	2462	69.0%	14,102	51.6%
2ND COMMITMENTS	3,097	2,305	5,402	22.7%	587	16.4%	5,989	21.9%
3RD OR MORE COMMIT.	3,481	3,223	6,704	28.2%	520	14.6%	7,224	26.4%
<b>TOTAL</b>	<b>13,756</b>	<b>9,990</b>	<b>23,746</b>	<b>100.0%</b>	<b>3,569</b>	<b>100.0%</b>	<b>27,315</b>	<b>100.0%</b>

\* THIS TABLE IS PRODUCED FROM A DOTS SUMMARY OF PRIOR OHIO COMMITMENTS.

**FIGURE 2. DISTRIBUTION OF COURT COMMITMENTS  
FY 2010**

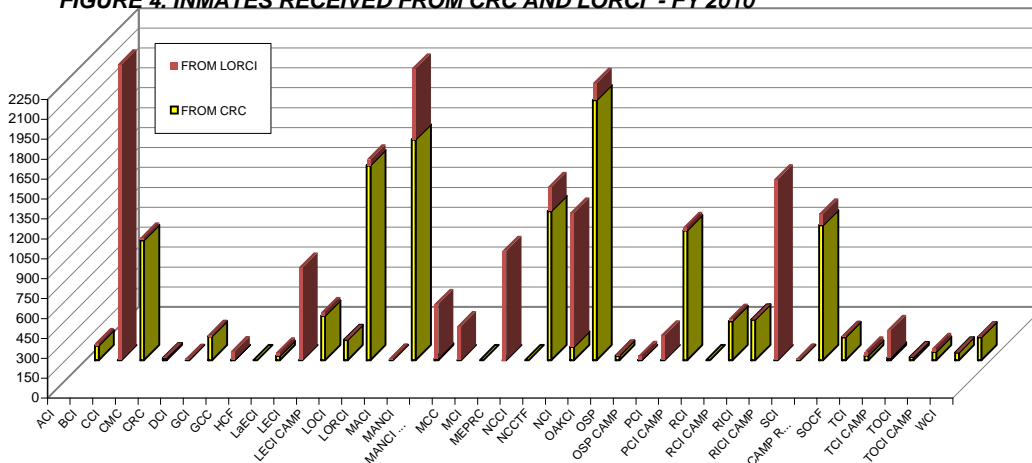


**FIGURE 3. PERCENT OF INMATES SERVING  
A FIRST COMMITMENT - FY 2003-2010**



INMATE TRANSFERS FROM MALE RECEPTION CENTERS								
	FROM CRC RECEPTION TO:				FROM LORCI RECEPTION TO:			
	2010	2009	2008	2007	2010	2009	2008	2007
ACI	111	325	233	264	16	24	30	57
BCI	0	0	0	0	2227	1957	2188	2,223
CCI	903	884	1064	1,223	20	12	49	22
CMC	15	4	5	7	3	85	2	3
CRC	0	0	0	0	10	5	20	24
DCI	179	360	162	202	11	2	2	2
GCI	1	0	1	0	66	57	86	101
GCI CAMP	0	0	0	0	0	14	0	0
HCF	32	61	60	90	26	21	65	78
LaECI	0	0	0	0	697	676	974	981
LECI	335	407	451	256	26	175	113	11
LECI CAMP	153	126	216	268	0	1	0	0
LOCI	1467	1666	1505	1,356	43	130	140	1
LORCI	0	0	0	0	13	56	0	13
MACI	1661	1605	1832	1,685	535	564	636	623
MANCI	12	18	48	59	410	531	357	677
MANCI CAMP	0	0	0	0	255	310	361	252
MCC	0	0	0	0	0	13	0	1
MCI	0	18	1	4	823	925	1529	1,846
MEPRC	0	49	409	435	0	51	0	0
NCCI	1123	945	1161	1,236	180	315	98	64
NCCTF	101	127	132	124	1010	620	930	890
NCI	1958	1918	1769	2,195	128	572	376	114
OCF	33	27	44	42	5	9	6	3
OSP	1	2	4	1	31	3	1	245
OSP CAMP	0	0	0	0	186	243	342	165
PCI	978	1666	1781	1,844	24	136	100	269
PCI CAMP	0	0	0	0	0	1	0	0
RCI	294	368	438	1,137	18	33	27	54
RCI CAMP	305	281	255	359	0	11	0	0
RICI	0	0	1	21	1361	1234	1541	1,691
RICI CAMP	0	0	0	0	12	0	0	0
SCI	1015	1309	1214	1,415	89	149	13	38
SCI CAMP	173	230	287	272	11	34	40	9
SOCF	34	44	52	69	30	18	43	44
TCI	19	20	3	7	208	170	126	204
TCI CAMP	22	5	0	5	0	0	0	0
TOCI	62	136	103	120	29	48	18	150
TOCI CAMP	57	110	139	153	0	2	0	0
WCI	172	242	283	290	5	18	5	9
<b>TOTAL</b>	<b>11216</b>	<b>12953</b>	<b>13653</b>	<b>15,139</b>	<b>8508</b>	<b>9225</b>	<b>10218</b>	<b>10,864</b>

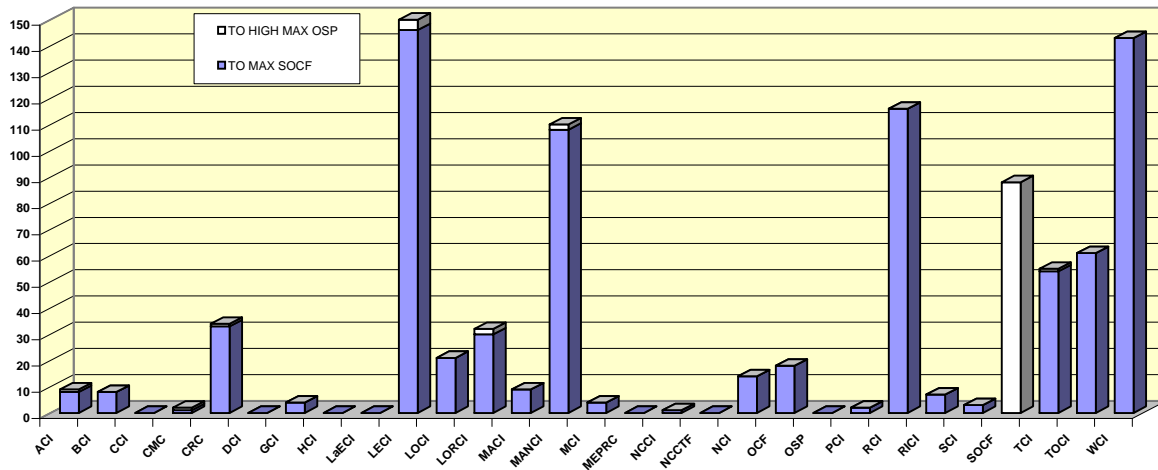
FIGURE 4. INMATES RECEIVED FROM CRC AND LORCI - FY 2010



**DISCIPLINARY AND ADMINISTRATIVE TRANSFERS**

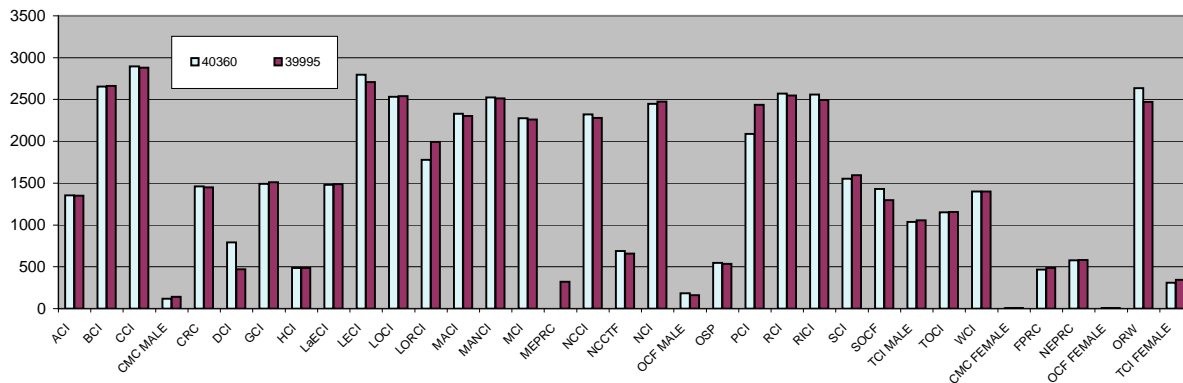
Institution	FROM LESSER CUSTODY TO:				FROM HIGHER TO LESSER CUSTODY			
	LEVEL 5 (OSP)		LEVEL 4 (SOCF)		LEVEL 5 (OSP)		LEVEL 4 (SOCF)	
	2010	2009	2010	2009	2010	2009	2010	2009
ACI	1	0	8	8	0	0	0	1
BCI	0	0	8	8	0	0	0	1
CCI	0	0	0	0	0	0	0	2
CMC	1	0	1	1	0	1	0	2
CRC	1	2	33	42	2	3	1	7
DCI	0	0	0	0	0	0	2	0
GCI	0	0	4	0	0	0	0	0
HCF	0	0	0	0	0	0	0	1
LaECI	0	0	0	0	0	0	0	0
LECI	4	0	146	94	2	2	38	51
LOCI	0	0	21	16	0	0	8	8
LORCI	2	2	30	18	0	0	0	2
MACI	0	0	9	5	0	0	4	10
MANCI	2	5	108	73	5	5	39	30
MCI	0	0	4	4	0	1	6	9
MEPRC	0	0	0	0	0	0	0	0
NCCI	0	0	1	4	0	0	0	3
NCCTF	0	0	0	0	0	0	0	0
NCI	0	0	14	13	0	1	6	3
OCF	0	0	18	24	0	0	29	37
OSP	0	0	0	0	0	0	0	0
PCI	0	0	2	1	0	0	1	3
RCI	0	0	116	88	5	4	47	42
RICI	0	0	7	5	0	0	7	1
SCI	0	0	3	2	0	0	1	2
SOCF	88	83	0	0	39	31	0	0
TCI	1	0	54	18	7	11	27	58
TOCI	0	0	61	16	12	13	57	75
WCI	0	2	143	137	6	5	91	122
<b>TOTAL</b>	<b>100</b>	<b>94</b>	<b>791</b>	<b>577</b>	<b>78</b>	<b>77</b>	<b>364</b>	<b>470</b>

**FIGURE 5. TRANSFERS TO LEVEL 5 (HIGH MAX) AND LEVEL 4 (MAXIMUM) CUSTODY IN FY 2010**



<b>INSTITUTION POPULATION TREND (PREVIOUS YEAR COMPARISON)</b>					
		<b>7/1/2010</b>	7/1/2009	<b>DIFFERENCE</b>	
ACI	(Allen Correctional Institution)	1355	1350	5	0.4%
BCI	(Belmont Correctional Institution)	2656	2663	-7	-0.3%
CCI	(Chillicothe Correctional Institution)	2897	2879	18	0.6%
CMC MALE	(Correctional Medical Center)	117	142	-25	-17.6%
CRC	(Correctional Reception Center)	1462	1449	13	0.9%
DCI	(Dayton Correctional Institution)	791	472	319	67.6%
GCI	(Grafton Correctional Institution)	1490	1512	-22	-1.5%
HCI	(Hocking Correctional Institution)	483	486	-3	-0.6%
LaECI	(Lake Erie Correctional Institution)	1482	1487	-5	-0.3%
LECI	(Lebanon Correctional Institution)	2795	2710	85	3.1%
LOCI	(London Correctional Institution)	2533	2539	-6	-0.2%
LORCI	(Lorain Correctional Institution)	1777	1994	-217	-10.9%
MACI	(Madison Correctional Institution)	2328	2301	27	1.2%
MANCI	(Mansfield Correctional Institution)	2524	2514	10	0.4%
MCI	(Marion Correctional Institution)	2275	2260	15	0.7%
MEPRC	(Montgomery Education & Pre-Release Center)	0	321	-321	-100.0%
NCCI	(North Central Correctional Institution)	2320	2280	40	1.8%
NCCTF	(North Coast Correctional Treatment Facility)	687	659	28	4.2%
NCI	(Noble Correctional Institution)	2448	2473	-25	-1.0%
OCF MALE	(Oakwood Correctional Facility)	185	159	26	16.4%
OSP	(Ohio State Penitentiary)	547	535	12	2.2%
PCI	(Pickaway Correctional Institution)	2089	2436	-347	-14.2%
RCI	(Ross Correctional Institution)	2570	2547	23	0.9%
RICI	(Richland Correctional Institution)	2560	2495	65	2.6%
SCI	(Southeastern Correctional Institution)	1553	1595	-42	-2.6%
SOCF	(Southern Ohio Correctional Facility)	1432	1297	135	10.4%
TCI	(Trumbull Correctional Institution)	1036	1056	-20	-1.9%
TOCI	(Toledo Correctional Institution)	1150	1154	-4	-0.3%
WCI	(Warren Correctional Institution)	1399	1401	-2	-0.1%
<b>MALE TOTAL</b>		<b>46941</b>	47166	-225	-0.5%
CMC FEMAL	(Correctional Medical Center)	4	7	-3	-42.9%
FPRC	(Franklin Pre-Release Center)	467	484	-17	-3.5%
NEPRC	(Northeast Pre-Release Center)	577	581	-4	-0.7%
OCF FEMAL	(Oakwood Correctional Facility)	9	5	4	80.0%
ORW	(Ohio Reformatory for Women)	2635	2471	164	6.6%
TCI FEMALE	(Trumbull Correctional Institution)	311	346	-35	-10.1%
<b>FEMALE TOTAL</b>		<b>4003</b>	3894	109	2.8%
<b>COMBINED MALE / FEMALE TOTAL</b>		<b>50944</b>	51,060	-116	-0.2%

**FIGURE 6. COMPARISON OF INSTITUTION POPULATION COUNT 7/1/10 and 7/1/09**

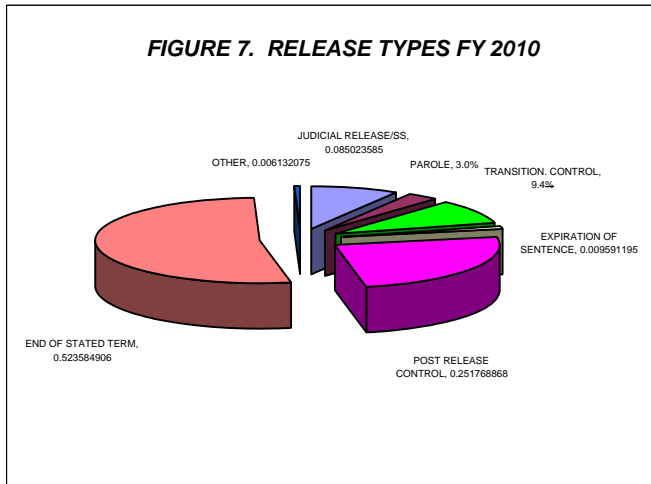


**RELEASES AND RETURNS:**

<b>INSTITUTIONAL STATISTICS</b>					
	FY 2010	FY 2010	FY 2010	FY 2009	FY 2008
	MALE	FEMALE	TOTAL	TOTAL	TOTAL
<b>RELEASED BY:</b>					
SUSPENDED SENTENCE	6	1	7	2	0
VACATED SENTENCE	9	1	10	3	2
REGULAR PAROLE	740	29	769	1141	1391
SHOCK PAROLE	1	0	1	0	0
JUDICIAL RELEASE	1575	581	2156	2273	2192
POST RELEASE CONTROL	5856	549	6405	8277	9019
TRANSITIONAL CONTROL	2152	230	2382	2258	2460
EXPIRATION OF SENTENCE	239	5	244	203	253
END OF STATED TERM	11564	1756	13320	12836	13406
APEALS BOND	17	2	19	24	25
ESCAPES (from the Office of Prisons)	0	0	0	2	1
DEATHS (from the Bureau of Medical Services)	123	4	127	68	98
<b>TOTAL RELEASED</b>	<b>22282</b>	<b>3158</b>	<b>25440</b>	<b>27087</b>	<b>28847</b>
<b>RETURNED BY:</b>					
PAROLE VIOLATION (TECH.) <sup>1</sup>	144	3	147	248	410
JUDICIAL RELEASE VIOLATION	606	138	744	908	865
POST RELEASE CONTROL VIOLATION <sup>1</sup>	541	28	569	1202	1428
TRANSITIONAL CONTROL VIOLATION	190	32	222	164	198
REACTIVATED SUSPENDED SENTENCE	6	0	6	7	5
ESCAPES RETURNED	10	0	10	16	10
APEALS BOND	12	2	14	21	16
<b>TOTAL RETURNED</b>	<b>1509</b>	<b>203</b>	<b>1712</b>	<b>2566</b>	<b>2932</b>
<sup>1</sup> Numbers from DOTS. PRC and Parole offenders being held at reception prior to a violation hearing have caused errors in the monthly report totals, so monthly totals are not summed for this report.					
<b>PAROLE VIOLATORS RECOMMISSIONED<sup>2</sup></b>	236	6	242	344	508
<b>PRC FELONY VIOLATOR<sup>2</sup></b>	923	41	964	1,524	*

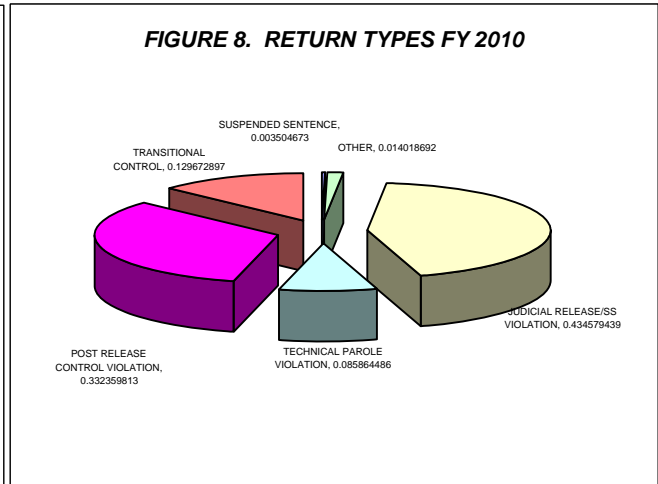
<sup>2</sup> PVR and PRC Felony Violator numbers from DOTS.

\* PRC Felony Violator counts are being determined in an improved way starting with FY 2009. Revised numbers for earlier years will be published later.



\*Other includes the following releases: vacated sentence, appeals bond, escapes and deaths.

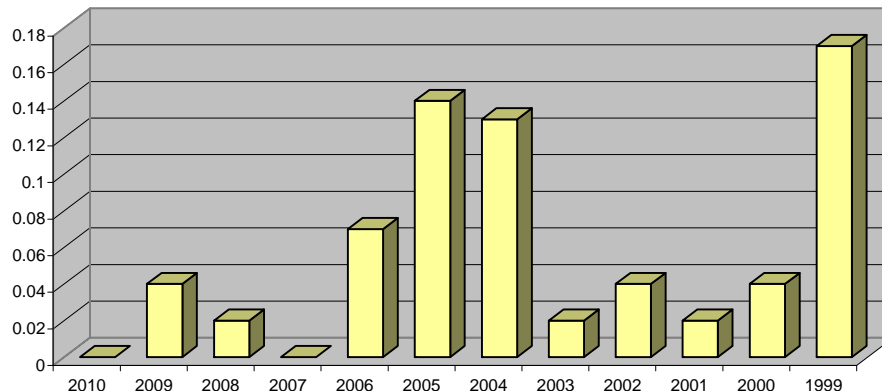
\*\*Includes offenders released on suspended sentence.



\*\*\*Other includes returns for the following: transitional control violation, return from appeals bond and captured escapes.

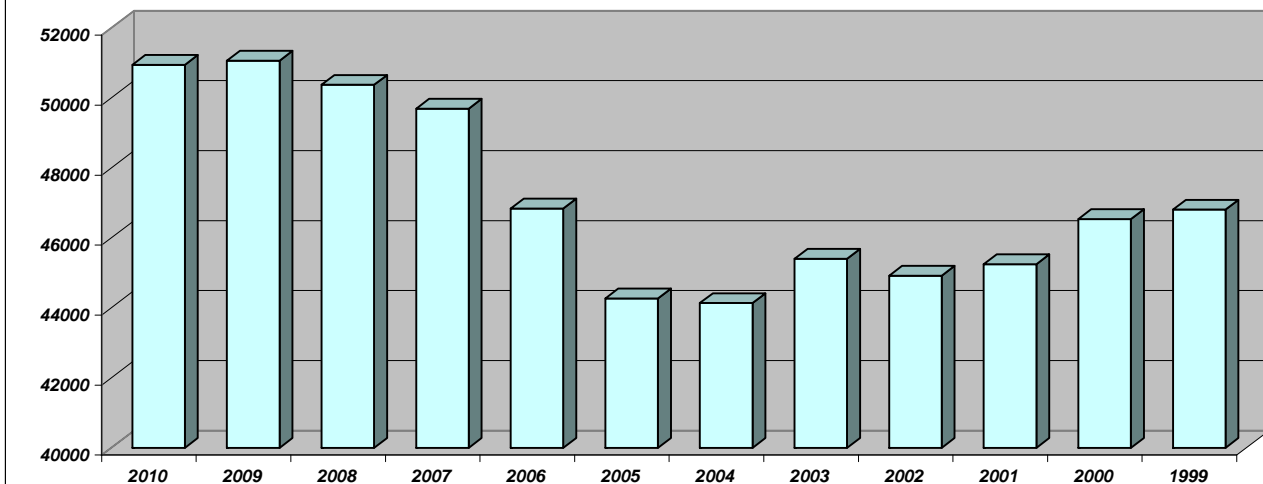
<b>ESCAPES AND RATES OF ESCAPE</b>												
	2010	2009	2008	2007	2006	2005	2004	2003	2002	2001	2000	1999
ACI	0	0	0	0	0	0	0	0	0	0	0	0
BCI	0	1	0	0	0	0	0	0	0	0	0	0
CCI	0	0	0	0	0	0	0	0	0	0	0	2
CMC	0	0	0	0	0	0	0	0	0	0	0	0
CRC	0	0	0	0	0	0	0	0	0	0	0	0
DCI	0	0	0	0	0	1	0	0	0	0	0	0
FPRC	0	0	0	0	0	0	0	0	0	0	0	0
GCI	0	0	0	0	0	0	0	1	0	1	0	1
HCI	0	0	0	0	0	0	0	0	0	0	0	0
LaECI	0	0	0	0	0	0	0	0	0	0	0	0
LCI	0	0	0	0	0	0	0	0	0	0	0	0
LECI	0	0	0	0	1	0	0	0	1	0	0	0
LOCI	0	0	0	0	0	0	0	0	0	0	1	0
LORCI	0	1	0	0	0	0	0	0	0	0	0	0
MACI	0	0	0	0	0	0	0	0	0	0	0	1
MANCI	0	0	0	0	0	1	1	0	0	0	0	1
MCI	0	0	0	0	0	0	0	0	0	0	0	0
MEPRC	0	0	0	0	0	1	0	0	0	0	0	0
NEPRC	0	0	0	0	0	0	0	0	0	0	0	0
NCCI	0	0	0	0	0	0	0	0	0	0	0	0
NCCTF	0	0	0	0	0	0	0	0	0	0	0	0
NCI	0	0	0	0	0	0	0	0	0	0	0	0
OCF	0	0	0	0	0	0	0	0	0	0	0	0
OCI	0	0	0	0	0	0	0	0	0	0	0	0
ORW	0	0	0	0	0	0	0	0	0	0	0	0
OSP	0	0	0	0	0	1	0	0	0	0	0	0
PCI	0	0	0	0	2	0	3	0	0	0	1	1
RCI	0	0	0	0	0	2	1	0	0	0	0	1
RICI	0	0	0	0	0	0	0	0	0	0	0	0
SCI	0	0	1	0	0	0	1	0	1	0	0	1
SOCF	0	0	0	0	0	0	0	0	0	0	0	0
TCI	0	0	0	0	0	0	0	0	0	0	0	0
TOCI	0	0	0	0	0	0	0	0	0	0	0	0
WCI	0	0	0	0	0	0	0	0	0	0	0	0
<b>TOTAL</b>	<b>0</b>	<b>2</b>	<b>1</b>	<b>0</b>	<b>3</b>	<b>6</b>	<b>6</b>	<b>1</b>	<b>2</b>	<b>1</b>	<b>2</b>	<b>8</b>
<b>AVG. SYSTEM POPULATION FOR YEAR</b>	<b>50980</b>	<b>50910</b>	<b>49926</b>	<b>48415</b>	<b>45203</b>	<b>44,026</b>	<b>44,527</b>	<b>45,175</b>	<b>44,980</b>	<b>45,609</b>	<b>46,690</b>	<b>47,988</b>
<b>RATE OF ESCAPE PER 1000 INMATE</b>	<b>0.00</b>	<b>0.04</b>	<b>0.02</b>	<b>0.00</b>	<b>0.07</b>	<b>0.14</b>	<b>0.13</b>	<b>0.02</b>	<b>0.04</b>	<b>0.02</b>	<b>0.04</b>	<b>0.17</b>

**FIGURE 9. RATES OF ESCAPE FY 2010 - 1999**



<b>END OF THE YEAR INSTITUTIONAL POPULATION TREND FOR JULY 1, 2010 THROUGH JULY 1, 1999</b>												
	<b>2010</b>	<b>2009</b>	<b>2008</b>	<b>2007</b>	<b>2006</b>	<b>2005</b>	<b>2004</b>	<b>2003</b>	<b>2002</b>	<b>2001</b>	<b>2000</b>	<b>1999</b>
ACI	1355	1350	1300	1348	1,326	1,320	1,282	1,227	1,173	1,152	1,328	1,401
BCI	2656	2663	2700	2659	2,507	2,184	2,148	2,120	2,080	2,040	1,901	2,423
CCI	2897	2879	2893	2901	2,861	2,751	2,655	2,579	2,264	2,246	2,195	2,448
CMC MALE	117	142	117	119	112	98	110	106	101	99	146	132
CMC FEMALE	4	7	3	4	5	10	4	6	2	5	2	3
CRC	1462	1449	1712	1863	1,860	1,751	1,602	1,916	1,858	1,558	1,733	1,667
DCI	791	472	476	464	413	410	412	459	474	472	473	474
FPRC	467	484	482	495	482	484	460	457	468	468	438	459
GCI	1490	1512	1522	1435	1,433	1,405	1,424	1,346	1,334	1,342	1,450	1,593
HCF	483	486	484	475	468	464	460	447	423	408	417	436
LaECI	1482	1487	1483	1457	1,476	1,378	1,373	1,388	1,369	1,362	999	0
LCI	0	0	0	0	0	0	0	496	1,566	1,485	1,549	1,650
LECI	2795	2710	2587	2253	2232	1,963	1,952	1,728	1,625	1,680	1,875	2,192
LOCI	2533	2539	2542	2153	2189	2,047	2,054	2,027	2,009	2,069	1,915	1,857
LORCI	1777	1994	1531	2028	1923	1,479	1,298	1,954	1,632	1,443	1,548	1,676
MACI	2328	2301	2232	2067	2056	1,957	2,056	2,110	2,063	2,009	2,093	2,471
MANCI	2524	2514	2414	2407	2260	2,378	2,353	2,373	2,276	2,109	2,319	2,671
MCI	2275	2260	2234	2093	1922	1,787	1,663	1,712	1,705	1,837	1,782	1,911
MEPRC	0	321	321	347	347	345	319	328	327	262	328	322
NEPRC	577	581	583	577	582	532	577	600	631	495	590	583
NCCI	2320	2280	2343	2313	2275	2,303	2,240	2,199	2,080	1,955	2,145	2,280
NCCTF	687	659	658	602	604	546	530	533	567	554	549	0
NCI	2448	2473	2448	2364	2346	2,103	2,149	1,964	1,854	1,850	2,014	2,054
OCF MALE	185	159	137	121	108	119	114	131	165	175	130	156
OCF FEMALE	9	5	4	7	3	3	1	0	8	5	8	9
OCI	0	0	0	0	0	0	0	0	0	1,743	1,920	1,935
ORW	2635	2471	2386	2369	2,023	1,857	1,969	1,827	1,765	1,726	1,807	1,802
ORW MALE	0	0	0	0	0	0	0	0	0	0	0	0
OSP	547	535	538	519	535	466	460	505	508	558	610	616
PCI	2089	2436	2478	2363	2043	1,960	2,152	2,251	2,057	1,815	1,903	1,920
RCI	2570	2547	2467	2563	2294	2,261	2,228	2,333	2,114	2,224	2,359	2,508
RICI	2560	2495	2534	2524	2411	2,291	2,273	2,238	2,271	2,043	2,183	1,238
SCI	1553	1595	1540	1595	1467	1,583	1,636	1,563	1,434	1,332	1,718	1,677
SOCF	1432	1297	1448	1417	1141	984	978	1,230	1,399	1,438	1,409	1,436
TCI MALE	1036	1056	940	956	956	963	1,365	1,396	1,429	1,395	1,411	1,429
TCI FEMALE	311	346	390	388	358	254	0	0	0	0	0	0
TOCI	1150	1154	1102	1092	803	787	789	797	766	696	0	0
WCI	1399	1401	1342	1353	1,018	1,047	1,048	1,056	1,120	1,194	1,290	1,377
<b>TOTAL</b>	<b>50944</b>	<b>51060</b>	<b>50,371</b>	<b>49,691</b>	<b>46,839</b>	<b>44,270</b>	<b>44,134</b>	<b>45,402</b>	<b>44,917</b>	<b>45,244</b>	<b>46,537</b>	<b>46,806</b>

**FIGURE 10. INSTITUTION POPULATION TREND FY 2010- FY 1999**





<b>END OF THE YEAR INSTITUTIONAL POPULATION TREND FOR JULY 1, 1998 THROUGH JULY 1, 1988</b>											
	1998	1997	1996	1995	1994	1993	1992	1991	1990	1989	1988
ACI	1,421	1,375	1294	1404	1,417	1,171	1,111	979	917	753	644
BCI	2,650	2,355	2252	283	0	0	0	0	0	0	0
CCI	2,854	2,628	2582	2620	2,791	2,794	2,625	2,456	2,325	2,064	1,864
CMC MALE	146	135	153	147	148	0	0	0	0	0	0
CMC FEMALE	5	5	8	5	0	0	0	0	0	0	0
CRC	2,304	2,155	2142	2240	2,182	2,331	2,198	2,009	1,683	1,534	1,005
DCI	483	486	485	484	481	493	480	468	467	480	456
FPRC	474	479	490	471	456	428	364	356	344	322	0
GCI	1,699	1,635	1621	1575	1,620	1,317	1,307	1,121	1,054	793	0
HCI/HCF	447	433	440	435	449	441	397	405	328	317	322
LaECI	0	0	0	0	0	0	0	0	0	0	0
LCI	1,937	1,990	2125	1926	1,897	1,974	1,923	1,878	1,840	1,702	1,611
LECI	2,307	2,225	2103	2188	2,202	2,192	1,911	1,942	1,937	1,939	1,868
LOCI	1,946	1,904	2350	2311	2,366	2,426	2,459	2,281	2,172	2,086	1,864
LORCI	2,116	2,041	1993	2071	2,337	2,313	2,163	1,886	1,520	0	0
MACI	2,601	2,483	2552	2589	2,599	2,111	2,088	1,898	1,705	1,416	1,313
MANCI	2,696	2,655	2588	2230	2,380	2,542	2,306	1,830	0	0	0
MCI	2,222	2,144	2087	2224	2,284	2,210	1,789	1,788	1,951	1,951	1,964
MEPRC	347	331	349	342	208	0	0	0	0	0	0
NEPRC	634	638	631	655	638	651	530	380	458	368	33
NCCI	2,312	2,226	2252	2262	0	0	0	0	0	0	0
NCCTF	0	0	0	0	0	0	0	0	0	0	0
NCI	2,397	2,128	0	0	0	0	0	0	0	0	0
OCF MALE	141	150	145	211	48	0	0	0	0	0	0
OCF FEMALE	5	0	0	0	0	0	0	0	0	0	0
OCI	2,038	2,056	2242	2430	2,396	2,285	2,266	2,169	2,146	1,820	1,625
ORW	1,780	1,716	1673	1531	1,418	1,374	1,458	1,334	1,261	1,375	1,261
ORW MALE	0	0	0	190	249	241	0	0	0	0	0
OSP	285	0	0	0	0	0	0	0	1,128	2,359	2,339
PCI	1,959	1,950	1956	1906	1,890	2,028	1,972	1,542	1,712	1,420	1,393
RCI	2,751	2,771	2731	2828	2,834	2,687	2,506	2,278	2,108	1,688	1,475
RICI	0	0	0	0	0	0	0	0	0	0	0
SCI/SOTC	1,769	1,743	1755	1797	1,801	1,912	1,999	1,477	1,517	1,436	1,468
SOCF	1,481	1,410	1176	1009	1,160	1,073	1,832	1,552	2,202	2,107	2,106
TCI	1,457	1,442	1389	1272	955	940	0	0	0	0	0
TCI FEMALE	0	0	0	0	0	0	0	0	0	0	0
TOCI	0	0	0	0	0	0	0	0	0	0	0
WCI	1,365	1,306	1472	1522	1,578	1,462	1,432	1,324	1,087	146	90
<b>TOTAL</b>	<b>49,029</b>	<b>46,995</b>	<b>45,036</b>	<b>43,158</b>	<b>40,784</b>	<b>39,396</b>	<b>37,116</b>	<b>33,353</b>	<b>31,862</b>	<b>28,076</b>	<b>24,750</b>

**FIGURE 11. INSTITUTION POPULATION TREND FY 1998 - 1988**

