



Ohio Department of Rehabilitation and Correction

1050 Freeway Drive North
Columbus, Ohio 43229

Bob Taft, Governor

www.drc.state.oh.us

Reginald A. Wilkinson, Director

TO: ALL CONCERNED
FROM: CORETTA PETTWAY & SENARATH DASSANAYAKA, RESEARCHERS
 BUREAU OF RESEARCH
 OFFICE OF POLICY
DATE: 2/10/2006
SUBJECT: CALENDAR YEAR 2002 SUMMARY OF INSTITUTION STATISTICS

TOTAL COURT COMMITMENTS TO THE OHIO DEPARTMENT OF REHABILITATION AND CORRECTION:

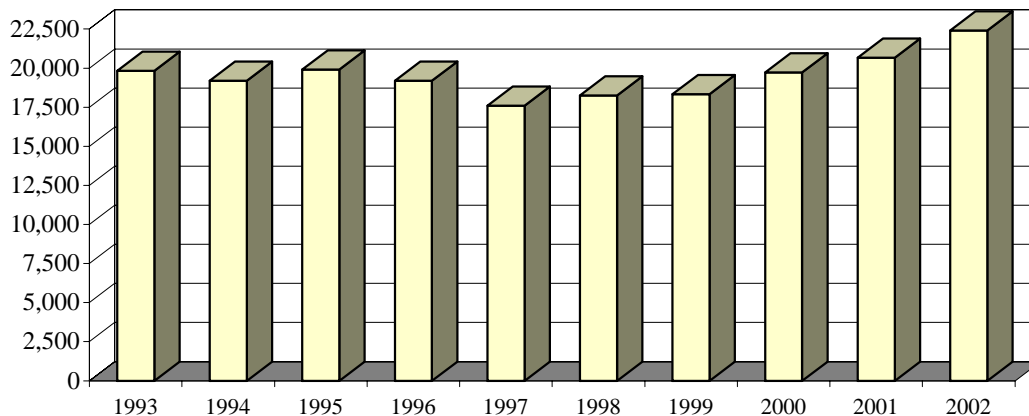
OFFICIAL COMMITMENT TOTALS			
CRC RECEPTION - MALE	10,321	MALE INTAKE	19,850
LORCI RECEPTION - MALE	9,109	FEMALE INTAKE	2,561
ORW RECEPTION - FEMALE	2,561	TOTAL	22,411
RECEIVED AT OTHER INSTITUTIONS	420		
TOTAL	22,411		

SENATE BILL 2 COMMITMENTS*		
	MOST SERIOUS OFFENSE IS A SENATE BILL 2 OFFENSE	MOST SERIOUS OFFENSE IS A PRE-SENATE BILL 2 OFFENSE
MALE INTAKE	19,618	232
FEMALE INTAKE	2,518	43
TOTAL	22,136	275

* THESE TOTALS ARE INCLUDED IN THE OFFICIAL COMMITMENT TOTALS.

COURT COMMITMENTS TO THE DEPARTMENT CY 1993-2002									
1993	1994	1995	1996	1997	1998	1999	2000	2001	2002
19,834	19,198	19,915	19,184	17,600	18,252	18,325	19,721	20,669	22,411

FIGURE 1. COURT COMMITMENTS TO THE DEPARTMENT CY 1993-2002



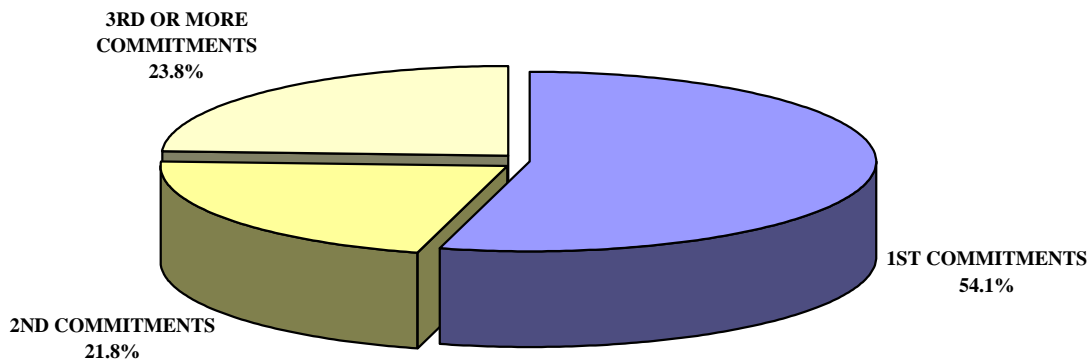
NUMBER OF COMMITMENTS TO THE DEPARTMENT								
CY 2002*	CRC MALE	LORCI MALE	MALE N	MALE %	ORW FEMALE	FEMALE %	TOTAL N	TOTAL %
1ST COMMITMENTS	5,800	4,622	10,422	52.5%	1,702	66.5%	12,124	54.1%
2ND COMMITMENTS	2,308	2,146	4,454	22.4%	435	17.0%	4,889	21.8%
3 OR MORE COMMITMENTS	2,355	2,619	4,974	25.1%	424	16.6%	5,398	24.1%
TOTAL	10,463	9,387	19,850	100.0%	2,561	100.0%	22,411	100.0%

NUMBER OF COMMITMENTS TO THE DEPARTMENT								
CY 2001*	CRC MALE	LORCI MALE	MALE N	MALE %	ORW FEMALE	FEMALE %	TOTAL N	TOTAL %
1ST COMMITMENTS	5,344	4,297	9,641	52.9%	1,569	64.2%	11,210	54.2%
2ND COMMITMENTS	2,035	2,065	4,100	22.5%	438	17.9%	4,538	22.0%
3 OR MORE COMMITMENTS	2,099	2,385	4,484	24.6%	437	17.9%	4,921	23.8%
TOTAL	9,478	8,747	18,225	100.0%	2,444	100.0%	20,669	100.0%

NUMBER OF COMMITMENTS TO THE DEPARTMENT								
CY 2000*	CRC MALE	LORCI MALE	MALE N	MALE %	ORW FEMALE	FEMALE %	TOTAL N	TOTAL %
1ST COMMITMENTS	5,197	4,334	9,531	52.3%	1,535	62.8%	11,066	53.5%
2ND COMMITMENTS	2,018	1,890	3,908	21.4%	425	17.4%	4,333	21.0%
3 OR MORE COMMITMENTS	1,933	1,962	3,895	21.4%	427	17.5%	4,322	20.9%
TOTAL	9,148	8,186	17,334	95.1%	2,387	97.7%	19,721	95.4%

* THIS TABLE IS PRODUCED FROM A DOTS SUMMARY OF PRIOR OHIO COMMITMENTS.

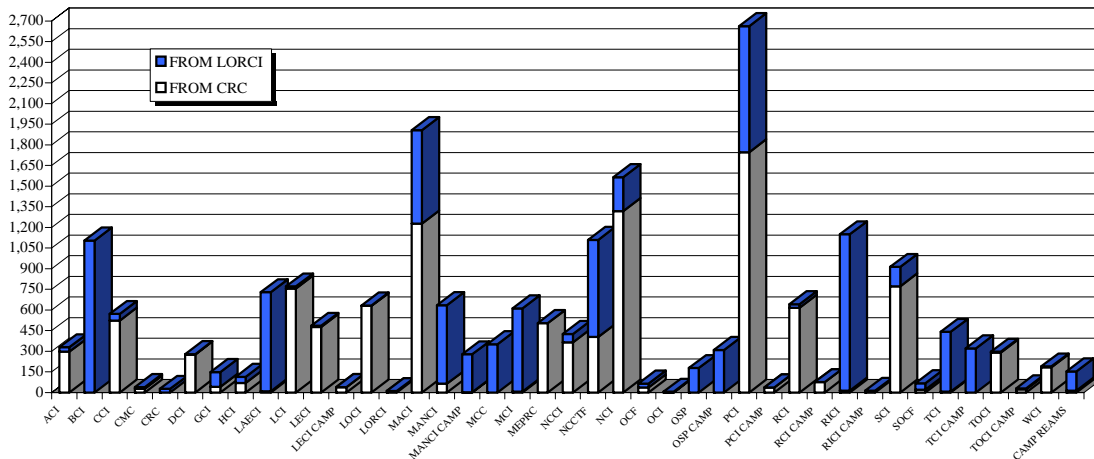
FIGURE 2. DISTRIBUTION OF COURT COMMITMENTS CY 2002



INMATE TRANSFERS FROM MALE RECEPTION CENTERS

	FROM CRC RECEPTION TO:				FROM LORCI RECEPTION TO:			
	2002	2001	2000	1999	2002	2001	2000	1999
ACI	297	147	114	277	32	29	8	49
BCI	1	2	1	2	1,104	1,122	945	1,426
CCI	523	465	419	301	48	24	8	12
CMC	28	3	9	6	12	3	8	3
CRC	0	0	0	0	27	18	24	24
DCI	277	252	222	211	3	0	0	0
GCI	43	22	8	16	106	65	29	72
HCI	70	63	38	62	45	46	59	79
LAECI	9	48	0	0	720	653	884	0
LCI	756	748	622	393	15	37	69	58
LECI	477	313	326	497	8	7	18	9
LECI CAMP	40	181	0	0	0	0	0	0
LOCI	629	708	736	761	4	3	9	35
LORCI	11	12	12	47	0	6	56	0
MACI	1,228	1,298	1,076	1,202	679	722	778	847
MANCI	64	71	6	11	571	334	167	487
MANCI CAMP	3	1	0	0	275	385	283	73
MCC	0	0	1	1	352	330	380	268
MCI	8	7	2	1	603	736	541	610
MEPRC	504	485	476	513	1	32	30	0
NCCI	366	342	217	237	60	206	98	202
NCCTF	404	405	512	0	705	718	538	0
NCI	1,318	1,191	1,129	1041	247	73	300	1
OCF	38	27	25	26	28	21	19	18
OCI	2	484	683	654	4	89	111	70
OSP	1	0	23	0	177	42	51	0
OSP CAMP	0	0	0	21	310	280	283	294
PCI	1,747	1,523	1,497	1,328	915	1,179	873	811
PCI CAMP	38	51	7	0	0	0	0	0
RCI	616	304	432	491	26	23	10	104
RCI CAMP	76	211	103	21	0	0	0	0
RICI	15	16	12	0	1,135	1,001	1,040	1404
RICI CAMP	0	11	11	0	13	27	126	184
SCI	772	580	618	708	141	124	133	366
SOCF	22	24	63	69	45	64	16	56
TCI	6	4	0	2	435	257	152	520
TCI CAMP	0	0	38	0	322	411	536	201
TOCI	291	167	83	0	6	84	0	0
TOCI CAMP	23	106	0	0	8	66	0	0
WCI	184	95	77	109	6	4	16	4
CAMP REAMS	14	233	154	223	140	132	158	104
TOTAL	10,901	10,600	9,752	9,231	9,328	9,353	8,756	8,391

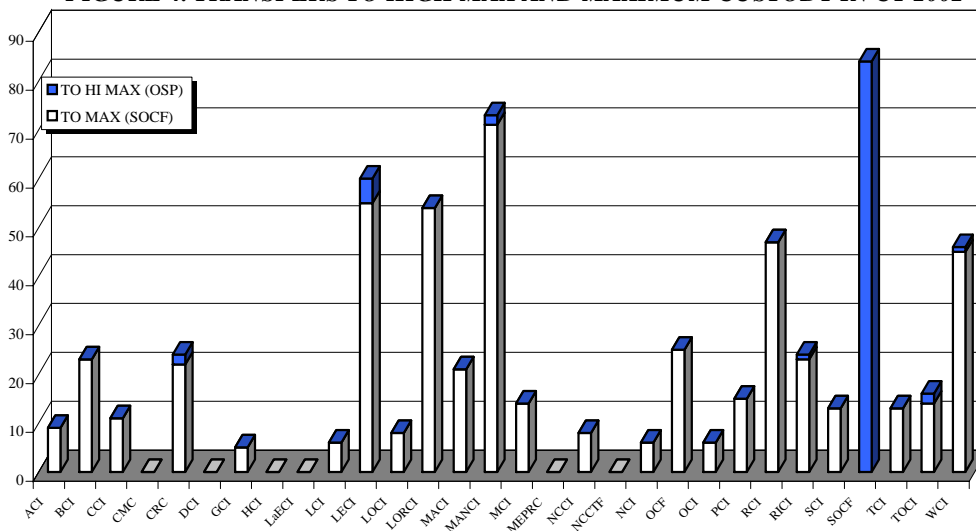
FIGURE 3. INMATES RECEIVED FROM CRC AND LORCI CY 2002



DISCIPLINARY AND ADMINISTRATIVE TRANSFERS

	FROM LESSER CUSTODY TO:				FROM HIGHER TO LESSER CUSTODY				
	HI MAX (OSP)		MAXIMUM (SOCF)		HI MAX (OSP)		MAXIMUM (SOCF)		
	2002	2001	2002	2001	2002	2001	2002	2001	2000
ACI	0	1	9	8	0	0	2	0	0
BCI	0	0	23	5	0	0	13	0	0
CCI	0	0	11	7	0	0	1	0	0
CMC	0	0	0	1	0	1	2	3	1
CRC	2	0	22	25	0	3	9	8	1
DCI	0	0	0	0	0	0	0	0	0
GCI	0	0	5	3	0	0	1	0	0
HCI	0	0	0	0	0	0	0	1	0
LaECI	0	2	0	0	0	0	1	1	0
LCI	0	0	6	7	0	0	0	0	0
LECI	5	8	55	69	4	8	59	77	106
LOCI	0	2	8	5	0	0	0	0	0
LORCI	0	0	54	29	0	0	9	2	0
MACI	0	0	21	18	0	0	3	0	4
MANCI	2	11	71	89	2	5	68	64	45
MCI	0	0	14	13	0	0	1	7	3
MEPRC	0	0	0	0	0	0	0	0	0
NCCI	0	5	8	4	0	0	2	0	0
NCCTF	0	0	0	0	0	0	0	0	0
NCI	0	9	6	12	0	2	1	4	0
OCF	0	0	25	15	0	0	19	20	19
OCI	0	0	6	14	0	0	1	0	0
PCI	0	0	15	0	0	0	1	0	0
RCI	0	15	47	62	0	0	171	219	181
RICI	1	0	23	15	0	0	6	0	0
SCI	0	4	13	6	0	2	2	2	3
SOCF	84	15	0	0	115	144	0	0	0
TCI	0	2	13	11	0	0	50	31	30
TOCI	2	1	14	2	1	0	36	6	0
WCI	1	3	45	73	0	2	66	70	105
TOTAL	97	78	514	493	122	167	524	515	498

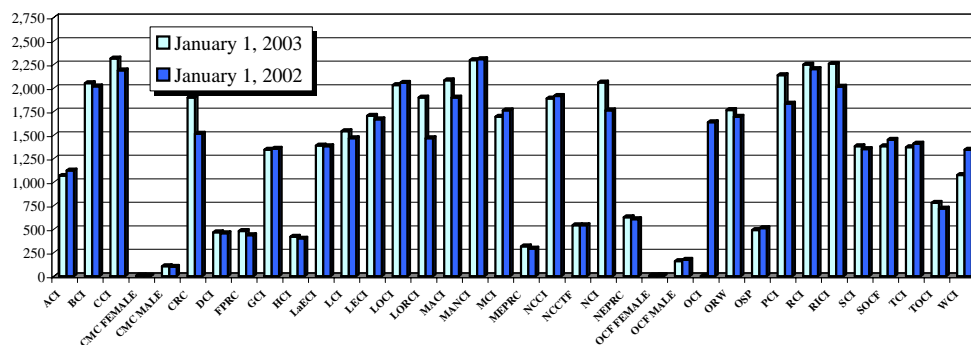
FIGURE 4. TRANSFERS TO HIGH MAX AND MAXIMUM CUSTODY IN CY 2002



END OF CALENDAR YEAR INSTITUTIONAL POPULATION COUNT:

INSTITUTION POPULATION TREND (PREVIOUS YEAR COMPARISON)					
		1/1/2003	1/1/2002	DIFFERENCE	
ACI	(Allen Correctional Institution)	1,067	1,122	-55	-4.9%
BCI	(Belmont Correctional Institution)	2,051	2,017	34	1.7%
CCI	(Chillicothe Correctional Institution)	2,315	2,187	128	5.9%
CMC MALE	(Correctional Medical Center)	106	99	7	7.1%
CRC	(Correctional Reception Center)	1,900	1,513	387	25.6%
DCI	(Dayton Correctional Institution)	468	456	12	2.6%
GCI	(Grafton Correctional Institution)	1,343	1,354	-11	-0.8%
HCI	(Hocking Correctional Institution)	418	400	18	4.5%
LaECI	(Lake Erie Correctional Institution)	1,387	1,382	5	0.4%
LCI	(Lima Correctional Institution)	1,543	1,467	76	5.2%
LECI	(Lebanon Correctional Institution)	1,706	1,666	40	2.4%
LOCI	(London Correctional Institution)	2,033	2,057	-24	-1.2%
LORCI	(Lorain Correctional Institution)	1,899	1,467	432	29.4%
MACI	(Madison Correctional Institution)	2,083	1,899	184	9.7%
MANCI	(Mansfield Correctional Institution)	2,297	2,308	-11	-0.5%
MCI	(Marion Correctional Institution)	1,694	1,763	-69	-3.9%
MEPRC	(Montgomery Education & Pre-Release Center)	318	292	26	8.9%
NCCI	(North Central Correctional Institution)	1,889	1,916	-27	-1.4%
NCCTF	(North Coast Correctional Treatment Facility)	540	542	-2	-0.4%
NCI	(Noble Correctional Institution)	2,060	1,763	297	16.8%
OCF MALE	(Oakwood Correctional Facility)	161	175	-14	-8.0%
OCI	(Orient Correctional Institution)	0	1,636	-1,636	-100.0%
OSP	(Ohio State Penitentiary)	491	512	-21	-4.1%
PCI	(Pickaway Correctional Institution)	2,136	1,834	302	16.5%
RCI	(Ross Correctional Institution)	2,248	2,202	46	2.1%
RICI	(Richland Correctional Institution)	2,258	2,016	242	12.0%
SCI	(Southeastern Correctional Institution)	1,383	1,352	31	2.3%
SOCF	(Southern Ohio Correctional Facility)	1,382	1,449	-67	-4.6%
TCI	(Trumbull Correctional Institution)	1,371	1,408	-37	-2.6%
TOCI	(Toledo Correctional Institution)	779	718	61	8.5%
WCI	(Warren Correctional Institution)	1,075	1,144	-69	-6.0%
MALE TOTAL		42,401	42,116	285	0.7%
CMC FEMALE	(Correctional Medical Center)	6	4	2	50.0%
FPRC	(Franklin Pre-Release Center)	479	436	43	9.9%
NEPRC	(Northeast Pre-Release Center)	625	606	19	3.1%
OCF FEMALE	(Oakwood Correctional Facility)	6	10	-4	-40.0%
ORW	(Ohio Reformatory for Women)	1,767	1,696	71	4.2%
FEMALE TOTAL		2,883	2,752	131	4.8%
COMBINED MALE / FEMALE TOTAL		45,284	44,868	416	0.9%

FIGURE 5. COMPARISON OF INSTITUTION POPULATION COUNT ON 1/1/03 and 1/1/02



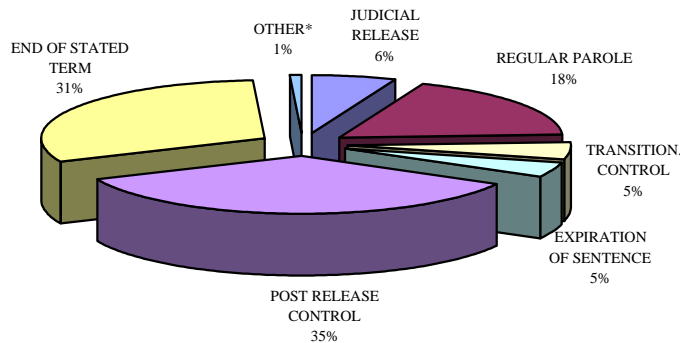
RELEASES AND RETURNS:

<u>INSTITUTIONAL STATISTICS</u>					
	CY 2002 FEMALE	CY 2002 MALE	CY 2002 TOTAL	CY 2001 TOTAL	CY 2000 TOTAL
<u>RELEASED BY:</u>					
SUSPENDED SENTENCE	6	34	40	130	201
VACATED SENTENCE	2	13	15	22	31
REGULAR PAROLE	149	4,461	4,610	5,397	5,642
SHOCK PAROLE	3	3	6	15	56
JUDICIAL RELEASE	322	1,275	1,597	1,634	1,656
POST RELEASE CONTROL	699	8,358	9,057	8,755	7,342
TRANSITIONAL CONTROL	192	1,041	1,233	1,318	1,078
EXPIRATION OF SENTENCE	48	1,052	1,100	1,320	1,357
END OF STATED TERM	1,254	6,738	7,992	7,214	6,864
APPEALS BOND	4	29	33	37	22
ESCAPES (numbers provided by the Office of Prisons)	0	1	1	3	2
DEATHS (numbers provided by the Bureau of Medical Services)	2	115	117	119	123
TOTAL RELEASED	2,681	23,120	25,801	25,964	24,374

<u>RETURNED BY:</u>					
PAROLE VIOLATION (TECH.) ¹	27	1,031	1,058	1,146	2,388
JUDICIAL RELEASE VIOLATION	91	529	620	597	611
POST RELEASE CONTROL VIOLATION ¹	74	1,444	1,518	2,187	1,347
TRANSITIONAL CONTROL VIOLATION	33	95	128	202	69
REACTIVATED SUSPENDED SENTENCE	11	61	72	111	182
ESCAPES RETURNED	0	4	4	3	2
APPEALS BOND	1	9	10	17	13
TOTAL RETURNED	237	3,173	3,410	4,263	4,612

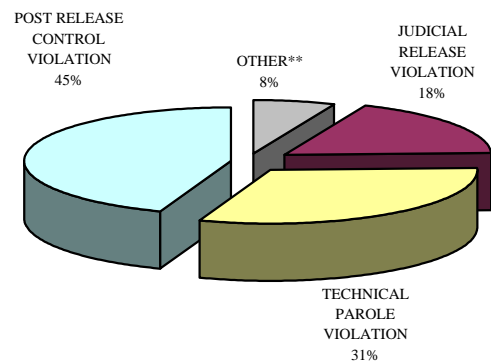
¹ Numbers taken from DOTS. PRC and Parole offenders being held at reception prior to a violation hearing, has caused errors in the monthly report totals, so they are not summed for this report.

FIGURE 6. RELEASE TYPES CY 2002



*Other includes the following releases: suspended sentence, shock parole, appeals bond, escapes and deaths.

FIGURE 7. RETURN TYPES CY 2002



**Other includes returns for the following: transitional control violation, reactivated suspended sentence, return from appeals bond and captured escapes.

ESCAPES AND RATES OF ESCAPE										
	2002	2001	2000	1999	1998	1997	1996	1995	1994	
ACI	0	0	0	0	0	0	0	0	0	0
BCI	0	0	0	0	0	0	0	1	0	0
CCI	0	0	0	2	0	0	0	0	0	0
CMC	0	0	0	0	0	0	0	0	0	0
CRC	0	0	0	0	0	0	0	0	0	0
DCI	0	0	0	0	0	0	0	0	0	0
FPRC	0	0	0	0	0	0	0	0	0	0
GCI	0	1	0	0	1	0	2	0	1	1
HCI	0	0	0	0	0	0	0	0	0	0
LAECI	0	0	0	0	0	0	0	0	0	0
LCI	0	0	0	0	0	0	0	0	0	0
LECI	0	1	0	0	0	0	0	0	0	0
LOCI	0	0	2	0	0	2	0	2	0	0
LORCI	0	0	0	0	0	0	0	0	0	0
MACI	0	0	0	1	0	0	1	2	0	0
MANCI	0	0	0	1	0	2	3	3	2	2
MCI	0	0	0	0	0	2	0	1	0	0
MEPRC	0	0	0	0	0	0	0	1	0	0
NEPRC	0	0	0	0	0	0	0	0	0	0
NCCI	0	0	0	0	0	0	1	0	2	0
NCCTF	0	0	0	0	0	0	0	0	0	0
NCI	0	0	0	0	0	0	0	0	0	0
OCF	0	0	0	0	0	0	0	0	0	0
OCI	0	0	0	0	0	0	0	0	0	0
ORW	0	0	0	0	0	0	0	0	0	0
OSP	0	0	0	0	0	0	0	0	0	0
PCI	0	0	0	1	1	1	2	1	1	1
RCI	0	0	0	0	1	0	1	2	0	0
RICI	0	0	0	0	0	0	0	0	0	0
SCI	1	1	0	1	1	1	1	0	2	2
SOCF	0	0	0	0	0	0	0	2	0	0
TCI	0	0	0	0	0	0	1	0	0	0
TOCI	0	0	0	0	0	0	0	0	0	0
WCI	0	0	0	0	0	0	0	0	0	0
TOTAL	1	3	2	6	4	8	13	14	8	
AVG. SYSTEM POPULATION FOR YEAR	45,005	45,196	46,196	47,039	48,581	46,965	45,109	43,283	41,012	
RATE OF ESCAPE PER 1000 INMATES	0.02	0.07	0.04	0.13	0.08	0.17	0.29	0.32	0.20	

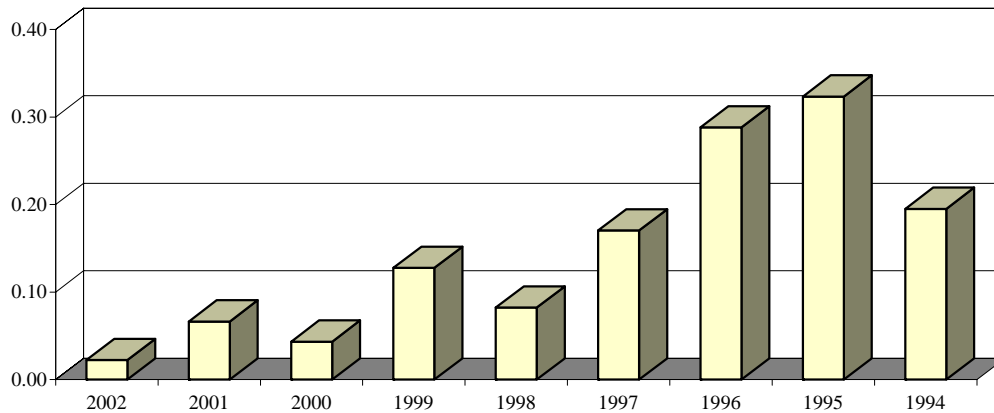
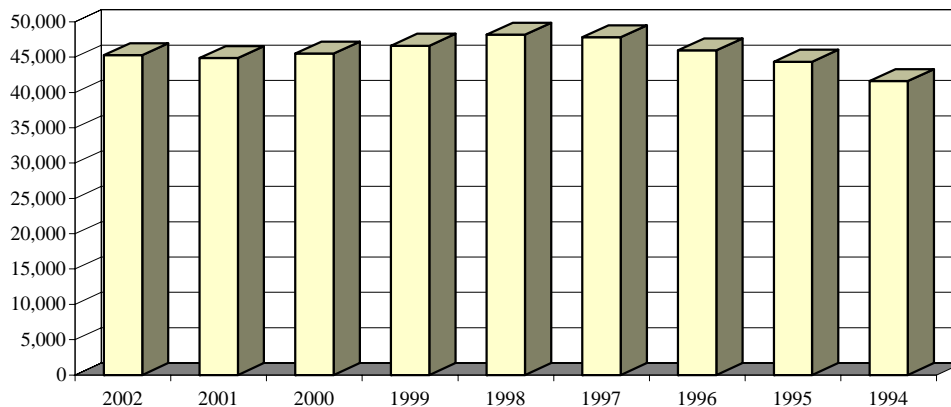


FIGURE 8. RATES OF ESCAPE CY 2002-1994

INSTITUTION POPULATION TRENDS:

END OF THE YEAR INSTITUTIONAL POPULATION TREND FOR 12/31/02 THROUGH 12/31/94									
	2002	2001	2000	1999	1998	1997	1996	1995	1994
ACI	1,067	1,122	1,175	1,406	1,397	1,381	1,336	1,415	1,481
BCI	2,051	2,017	1,981	2,427	2,533	2,433	2,283	1,891	224
CCI	2,315	2,187	2,192	2,244	2,731	2,714	2,580	2,621	2,780
CMC MALE	106	99	101	151	140	150	149	154	150
CMC FEMALE	6	4	2	2	4	4	6	4	6
CRC	1,900	1,513	1,777	1,840	1,982	2,267	1,971	2,074	2,204
DCI	468	456	445	460	467	489	485	484	478
FPRC	479	436	394	407	453	475	489	500	435
GCI	1,343	1,354	1,358	1,601	1,587	1,658	1,622	1,590	1,596
HCI/HCF	418	400	396	438	441	446	432	436	417
LaECI	1,387	1,382	1,369	0	0	0	0	0	0
LCI	1,543	1,467	1,500	1,530	1,907	2,009	2,082	2,110	2,051
LECI	1,706	1,666	1,778	1,976	2,221	2,273	2,105	2,198	2,139
LOCI	2,033	2,057	1,947	1,885	1,901	1,877	1,896	2,366	2,335
LORCI	1,899	1,467	1,568	1,606	2,053	2,062	2,003	1,863	2,327
MACI	2,083	1,899	2,060	2,290	2,613	2,545	2,530	2,311	2,315
MANCI	2,297	2,308	2,286	2,469	2,637	2,669	2,598	2,637	2,320
MCI	1,694	1,763	1,803	1,918	2,206	2,111	2,109	2,093	2,207
MEPRC	318	292	305	306	340	347	324	349	337
NCCI	1,889	1,916	1,938	2,258	2,314	2,316	2,216	2,274	724
NCCTF	540	542	549	0	0	0	0	0	0
NCI	2,060	1,763	1,832	1,854	2,344	2,377	1,452	0	0
NEPRC	625	606	569	546	592	643	633	645	613
OCF MALE	161	175	144	6	7	7	9	0	0
OCF FEMALE	6	10	4	158	173	168	162	229	97
OCI	0	1,636	1,908	1,917	2,000	2,039	2,139	2,245	2,340
ORW	1,767	1,696	1,774	1,845	1,830	1,682	1,642	1,594	1,490
ORW MALES	0	0	0	0	0	0	0	0	209
OSP	491	512	593	643	492	0	0	0	0
PCI	2,136	1,834	1,785	1,883	1,940	1,920	1,919	1,923	1,942
RCI	2,248	2,202	2,289	2,398	2,805	2,797	2,767	2,618	2,813
RICI	2,258	2,016	2,073	2,267	102	0	0	0	0
SCI	1,383	1,352	1,368	1,679	1,726	1,742	1,819	1,751	2,044
SOCF	1,382	1,449	1,435	1,456	1,425	1,425	1,304	1,076	1,060
TCI	1,371	1,408	1,327	1,409	1,447	1,446	1,424	1,375	973
TOCI	779	718	222	0	0	0	0	0	0
WCI	1,075	1,144	1,258	1,344	1,361	1,336	1,476	1,512	1,502
TOTAL	45,284	44,868	45,505	46,619	48,171	47,808	45,962	44,338	41,609

FIGURE 9. INSTITUTION POPULATION TREND CY 2002-1994



END OF THE YEAR INSTITUTIONAL POPULATION TREND FOR 12/31/93 THROUGH 12/31/85

	1993	1992	1991	1990	1989	1988	1987	1986	1985
ACI	1,355	1,105	1,007	975	885	712	635	0	0
BCI	0	0	0	0	0	0	0	0	0
CCI	2,821	2,802	2,634	2,460	2,217	1,976	1,886	2,924	2,525
CLEV. P.R.	0	0	0	0	0	0	43	0	0
CMC MALE	139		0	0	0	0	0	0	0
CMC FEMALE	7		0	0	0	0	0	0	0
CRC	2,318	2,207	2,223	1,423	1,540	1,333	873	0	0
DCI	484	485	481	454	469	473	435	0	0
EDP	0	0	0	343	385	193	0	0	0
FPRC	429	364	354	1,012	925	167	0	0	0
GCI	1,435	1,289	1,161	0	0	0	0	0	0
HCI/HCF	446	395	392	396	321	327	319	325	318
LCI	1,954	1,902	1,909	1,848	1,726	1,719	1,546	1,732	1,695
LECI	2,196	2,188	1,939	1,948	1,935	1,861	1,871	2,223	2,048
LOCI	2,400	2,394	2,447	1,484	0	0	0	0	0
LORCI	2,329	2,175	1,905	2,250	2,173	1,829	1,987	2,246	2,146
MACI	2,312	2,069	1,942	1,696	1,697	1,360	820	0	0
MANCI	2,455	2,341	2,119	1,411	0	0	0	0	0
MCI	2,307	2,104	1,856	1,775	1,937	1,941	1,961	2,145	1,962
NEPRC	659	611	491	340	413	173	0	0	0
OCI	2,280	2,257	2,266	2,135	2,053	1,709	1,578	2,141	1,533
ORW FEMALES	1,443	1,389	1,412	1,213	1,569	1,280	1,183	1,153	853
ORW MALES	249	0	0	0	0	0	0	0	0
OSR	0	0	0	0	2,131	2,188	2,317	2,697	2,673
PCI	1,942	1,912	1,792	1,536	1,518	1,265	1,575	1,017	1,215
RCI	2,892	2,646	2,372	2,222	1,920	1,584	1,305	0	0
SCI/SOTC	1,905	2,018	1,705	1,533	1,466	1,528	1,453	1,185	1,157
SOCF	1,093	1,831	1,637	1,829	2,133	2,101	2,156	2,387	2,414
TCI	948	83	0	0	0	0	0	0	0
WCI	1,455	1,424	1,402	1,218	887	142	0	0	0
TOTAL	40,253	37,991	35,446	31,501	30,300	25,861	23,943	22,175	20,539

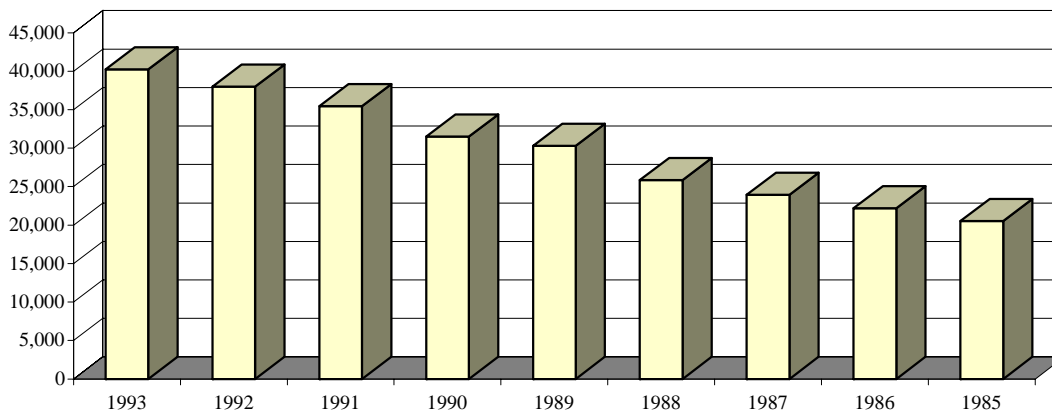


FIGURE 10. INSTITUTION POPULATION TREND 1993-1985