



Ohio Department of Rehabilitation and Correction

1050 Freeway Drive North
Columbus, OH 43229

Bob Taft, Governor

www.drc.state.oh.us

Terry J. Collins, Director

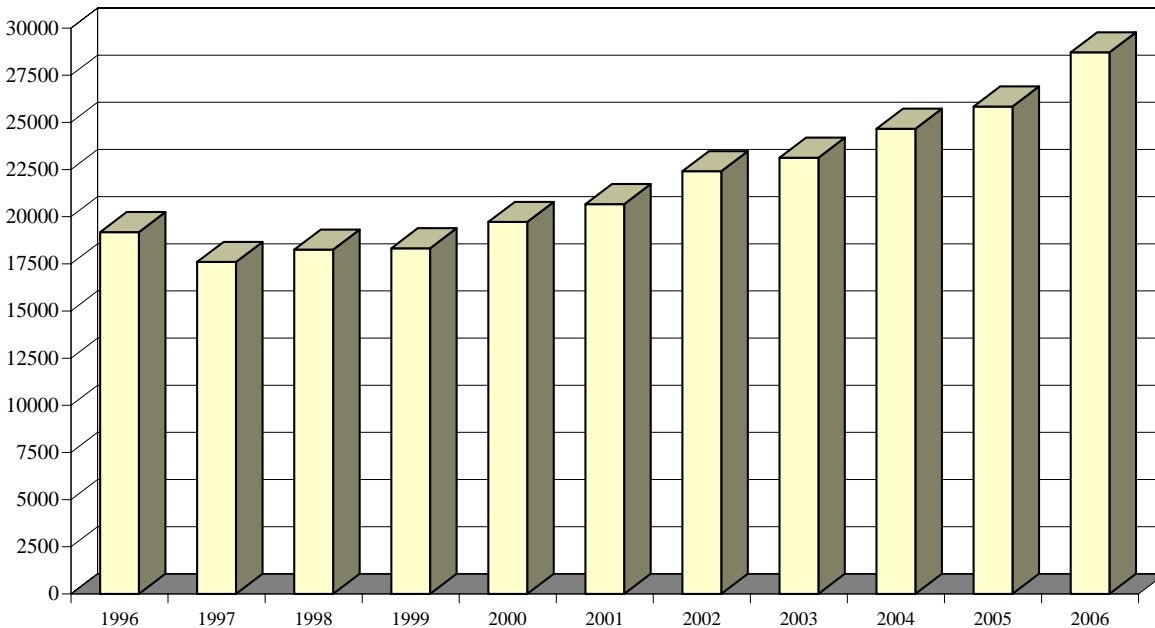
TO: ALL CONCERNED
FROM: SENARATH DASSANAYAKA, SENIOR RESEARCHER
 BUREAU OF RESEARCH
 OFFICE OF POLICY
DATE: 5/14/2007
SUBJECT: CALENDAR YEAR 2006 SUMMARY OF INSTITUTION STATISTICS

TOTAL COURT COMMITMENTS TO THE OHIO DEPARTMENT OF REHABILITATION AND CORRECTION:

OFFICIAL COMMITMENT TOTALS			
CRC RECEPTION - MALE	14,070	MALE INTAKE	24,927
LORCI RECEPTION - MALE	10,857	FEMALE INTAKE	3,787
ORW RECEPTION - FEMALE	3,787	TOTAL	28,714
TOTAL	28,714		

COURT COMMITMENTS TO THE DEPARTMENT CY 1996-2005										
1996	1997	1998	1999	2000	2001	2002	2003	2004	2005	2006
19,184	17,600	18,252	18,325	19,721	20,669	22,411	23,126	24,662	25,841	28,714

FIGURE 1. COURT COMMITMENTS TO THE DEPARTMENT CY 1996-2006



NUMBER OF COMMITMENTS TO THE DEPARTMENT**								
CY 2006*	CRC MALE	LORCI MALE	MALE N	MALE %	ORW FEMALE	FEMALE %	TOTAL N	TOTAL %
1ST COMMITMENT	7,240	4,852	12,092	48.51%	2,545	67.20%	14,637	50.98%
2ND COMMITMENT	3,248	2,484	5,732	23.00%	671	17.72%	6,403	22.30%
3 OR MORE COMMITMENTS	3,582	3,521	7,103	28.50%	571	15.08%	7,674	26.73%
TOTAL	14,070	10,857	24,927	100.00%	3,787	100.00%	28,714	100.00%

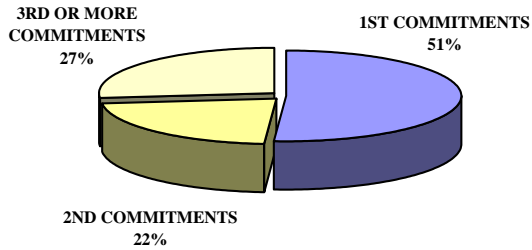
NUMBER OF COMMITMENTS TO THE DEPARTMENT								
CY 2005*	CRC MALE	LORCI MALE	MALE N	MALE %	ORW FEMALE	FEMALE %	TOTAL N	TOTAL %
1ST COMMITMENT	6,584	4,334	10,918	48.21%	2,116	66.23%	13,034	50.44%
2ND COMMITMENT	2,885	2,262	5,147	22.73%	579	18.12%	5,726	22.16%
3 OR MORE COMMITMENTS	3,408	3,173	6,581	29.06%	500	15.65%	7,081	27.40%
TOTAL	12,877	9,769	22,646	100.00%	3,195	100.00%	25,841	100.00%

NUMBER OF COMMITMENTS TO THE DEPARTMENT								
CY 2004*	CRC MALE	LORCI MALE	MALE N	MALE %	ORW FEMALE	FEMALE %	TOTAL N	TOTAL %
1ST COMMITMENT	6,394	4,260	10,654	49.42%	2,102	67.68%	12,756	51.72%
2ND COMMITMENT	2,694	2,285	4,979	23.10%	520	16.74%	5,499	22.30%
3 OR MORE COMMITMENTS	2,906	3,017	5,923	27.48%	484	15.58%	6,407	25.98%
TOTAL	11,994	9,562	21,556	100.00%	3,106	100.00%	24,662	100.00%

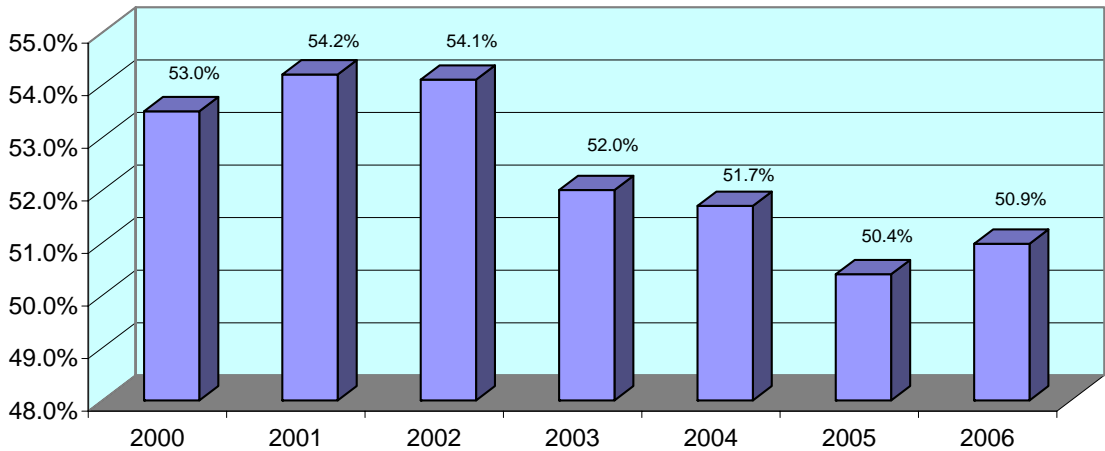
* THIS TABLE IS PRODUCED FROM A DOTS SUMMARY OF PRIOR OHIO COMMITMENTS.

** Percentages may not total 100 due to rounding

FIGURE 2. DISTRIBUTION OF COURT COMMITMENTS CY 2006

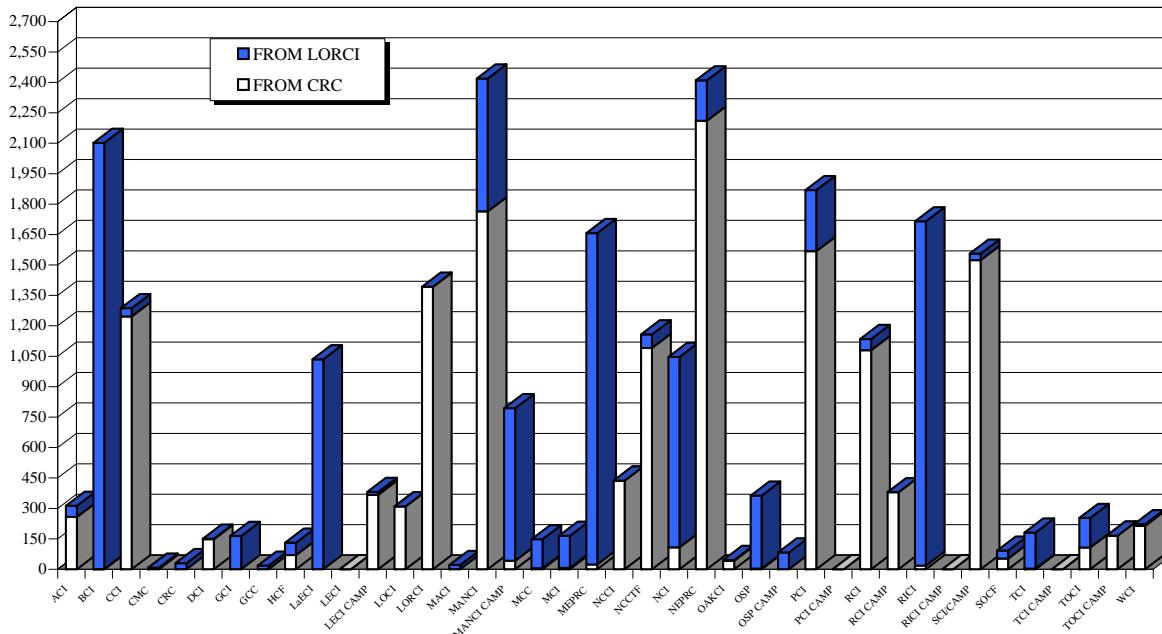


**FIGURE 3. PERCENT OF INMATES SERVING A FIRST COMMITMENT
CY 2000-2006**



	FROM CRC RECEPTION TO:				FROM LORCI RECEPTION TO:			
	2006	2005	2004	2003	2006	2005	2004	2003
	ACI	258	377	381	383	55	31	37
BCI	1	0	26	1	2,101	2,015	1,488	1,249
CCI	1,246	1,157	1,000	1,140	41	40	50	36
CMC	5	4	4	3	3	4	3	1
CRC	0	0	0	0	30	42	14	16
DCI	148	126	139	196	3	2	1	13
GCI	0	2	4	0	164	195	219	286
GCC	0	0	0	0	18	105	0	0
HCI	70	3	36	91	61	68	114	59
LAECI	0	80	62	0	1,035	987	365	701
LCI	0	0	0	77	0	0	365	0
LECI	367	414	458	558	14	67	19	15
LECI CAMP	310	298	83	0	0	0	0	0
LOCI	1,392	1,153	1,022	662	1	3	4	7
LORCI	0	0	2	3	21	1	1	0
MACI	1,764	1,756	1,629	1,724	655	540	752	848
MANCI	42	62	33	34	752	526	643	870
MANCI CAMP	5	0	0	1	143	292	269	94
MCC	7	57	0	0	158	342	337	60
MCI	24	100	1	4	1,633	908	1,206	1,187
MEPRC	437	391	475	480	0	0	0	0
NCCI	1,091	1,051	1,186	892	67	162	18	22
NCCTF	108	80	61	245	939	973	810	712
NCI	2,211	2,452	1,513	1,538	199	222	544	214
OCF	42	63	30	45	4	11	10	14
OSP	3	2	1	1	360	284	324	411
OSP CAMP	0	0	0	0	83	149	105	62
PCI	1,568	1,119	1,661	1,921	301	158	210	525
PCI CAMP	0	0	7	0	0	0	0	0
RCI	1,080	318	663	810	55	18	23	34
RCI CAMP	380	500	224	23	0	0	0	0
RICI	18	2	15	0	1,697	1,416	1,440	1,235
RICI CAMP	0	0	0	0	0	0	0	0
SCI/CAMPREAMS	1,524	1,367	1,445	1,106	32	59	263	253
SOCF	53	30	17	16	39	12	9	24
TCI	3	5	4	14	178	127	345	741
TCI CAMP	0	8	0	0	0	0	183	86
TOCI	107	47	170	280	146	9	13	28
TOCI CAMP	166	174	72	0	0	0	1	0
WCI	214	140	119	89	8	13	9	2
TOTAL	14,644	13,338	12,543	12,337	10,996	9,781	10,194	9,844

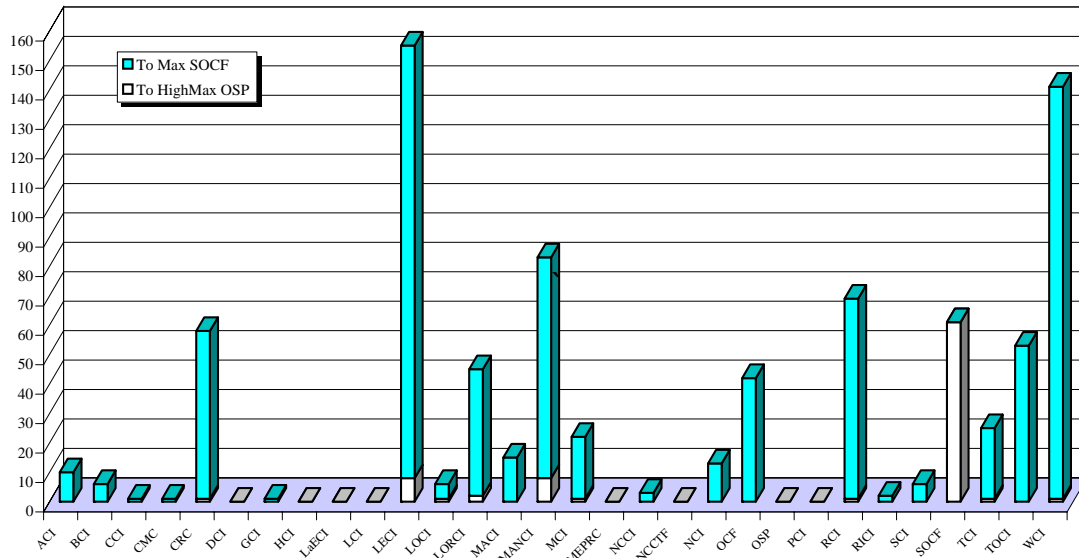
FIGURE 4. INMATES RECEIVED FROM CRC AND LORCI CY 2006



DISCIPLINARY AND ADMINISTRATIVE TRANSFERS

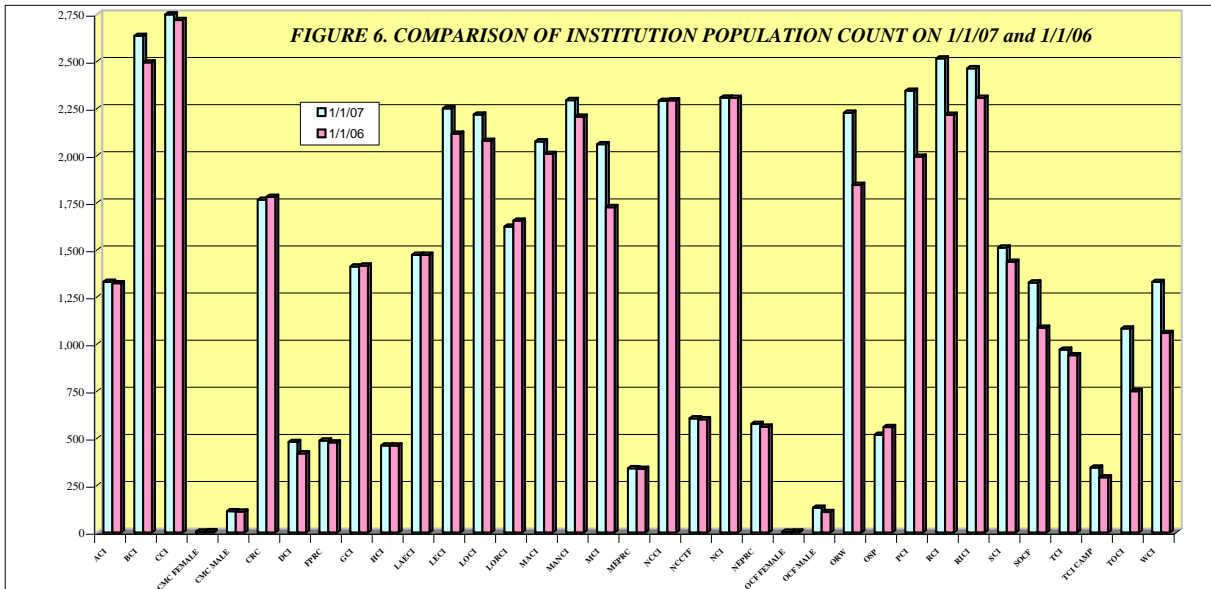
	FROM LESSER CUSTODY TO:				FROM HIGHER TO LESSER CUSTODY			
	HI MAX (LEVEL 5) (OSP)		MAXIMUM (LEVEL 4) (SOCF)		HI MAX (LEVEL 5) (OSP)		MAXIMUM (LEVEL 4) (SOCF)	
	2006	2005	2006	2005	2006	2005	2006	2005
ACI	0	0	10	4	0	0	2	0
BCI	0	0	6	14	0	0	4	10
CCI	0	0	1	2	0	0	0	1
CMC	0	1	1	1	0	0	1	1
CRC	1	2	57	24	1	3	14	21
DCI	0	0	0	0	0	0	0	0
GCI	0	0	1	0	0	0	0	0
HCI	0	0	0	0	0	0	0	0
LaECI	0	0	0	0	0	0	0	0
LCI	0	0	0	0	0	0	0	0
LECI	8	0	147	118	5	5	78	67
LOCI	1	0	5	21	0	0	1	6
LORCI	2	1	43	13	0	0	0	1
MACI	0	0	15	22	0	0	3	1
MANCI	8	6	75	68	28	13	25	27
MCI	1	1	21	0	0	0	2	0
MEPRC	0	0	0	0	0	0	0	0
NCCI	0	0	3	2	0	1	0	0
NCCTF	0	0	0	0	0	0	0	0
NCI	0	0	13	12	0	0	10	2
OCF	0	5	42	38	1	5	38	27
OSP	0	0	0	0	0	0	0	0
PCI	0	0	0	2	0	0	1	0
RCI	1	0	68	112	4	7	50	82
RICI	0	3	2	12	1	0	1	4
SCI	0	0	6	3	0	0	1	0
SOCF	61	78	0	0	65	48	0	0
TCI	1	1	24	32	3	15	14	15
TOCI	0	0	53	17	4	18	8	14
WCI	1	0	140	83	3	6	68	65
TOTAL	85	98	733	600	115	121	321	344

FIGURE 5. TRANSFERS TO HIGH MAX (LEVEL 5) AND MAXIMUM (LEVEL 4) CUSTODY IN CY 2006



END OF CALENDAR YEAR INSTITUTIONAL POPULATION COUNT:

INSTITUTION POPULATION TREND (PREVIOUS YEAR COMPARISON)		1/1/2007	1/1/2006	DIFFERENCE	
ACI	(Allen Correctional Institution)	1,331	1,323	8	0.6%
BCI	(Belmont Correctional Institution)	2,636	2,495	141	5.7%
CCI	(Chillicothe Correctional Institution)	2,890	2,720	170	6.3%
CMC MALE	(Correctional Medical Center)	113	111	2	1.8%
CRC	(Correctional Reception Center)	1,766	1,782	-16	-0.9%
DCI	(Dayton Correctional Institution)	481	420	61	14.5%
GCI	(Grafton Correctional Institution)	1,412	1,417	-5	-0.4%
HCI	(Hocking Correctional Institution)	462	461	1	0.2%
LaECI	(Lake Erie Correctional Institution)	1,474	1,474	0	0.0%
LECI	(Lebanon Correctional Institution)	2,251	2,117	134	6.3%
LOCI	(London Correctional Institution)	2,218	2,079	139	6.7%
LORCI	(Lorain Correctional Institution)	1,624	1,655	-31	-1.9%
MACI	(Madison Correctional Institution)	2,076	2,009	67	3.3%
MANCI	(Mansfield Correctional Institution)	2,295	2,207	88	4.0%
MCI	(Marion Correctional Institution)	2,061	1,727	334	19.3%
MEPRC	(Montgomery Education & Pre-Release Center)	341	338	3	0.9%
NCCI	(North Central Correctional Institution)	2,291	2,294	-3	-0.1%
NCCTF	(North Coast Correctional Treatment Facility)	606	601	5	0.8%
NCI	(Noble Correctional Institution)	2,308	2,307	1	0.0%
OCF MALE	(Oakwood Correctional Facility)	132	109	23	21.1%
OSP	(Ohio State Penitentiary)	519	560	-41	-7.3%
PCI	(Pickaway Correctional Institution)	2,345	1,995	350	17.5%
RCI	(Ross Correctional Institution)	2,516	2,217	299	13.5%
RICI	(Richland Correctional Institution)	2,464	2,307	157	6.8%
SCI	(Southeastern Correctional Institution)	1,512	1,437	75	5.2%
SOCF	(Southern Ohio Correctional Facility)	1,327	1,087	240	22.1%
TCI	(Trumbull Correctional Institution)	971	941	30	3.2%
TOCI	(Toledo Correctional Institution)	1,083	750	333	44.4%
WCI	(Warren Correctional Institution)	1,330	1,059	271	25.6%
MALE TOTAL		44,835	41,999	2,836	6.8%
CMC FEMALE	(Correctional Medical Center)	5	7	-2	-28.6%
FPRC	(Franklin Pre-Release Center)	488	478	10	2.1%
NEPRC	(Northeast Pre-Release Center)	577	562	15	2.7%
OCF FEMALE	(Oakwood Correctional Facility)	4	5	-1	-20.0%
ORW	(Ohio Reformatory for Women)	2,228	1,845	383	20.8%
TCI CAMP	(Trumbull Corr. Institution Camp)	345	293	52	17.7%
FEMALE TOTAL		3,647	3,190	457	14.3%
COMBINED MALE / FEMALE TOTAL		48,482	45,189	3,293	7.3%



RELEASES AND RETURNS:

INSTITUTIONAL STATISTICS					
	CY 2006	CY 2006	CY 2006	CY 2005	CY 2004
	Male	Female	TOTAL	TOTAL	TOTAL
RELEASED BY:					
SUSPENDED SENTENCE	21	1	22	33	19
VACATED SENTENCE	8	2	10	8	15
REGULAR PAROLE	2,085	62	2,147	2,522	3,950
SHOCK PAROLE	0	0	0	0	6
JUDICIAL RELEASE	1,471	411	1,882	1,750	1,691
POST RELEASE CONTROL	7,266	917	8,183	7,239	7,587
TRANSITIONAL CONTROL	2,119	191	2,310	2,432	2,279
EXPIRATION OF SENTENCE	323	28	351	381	479
END OF STATED TERM	11,537	1,871	13,408	12,169	11,981
APPEALS BOND	16	3	19	17	30
ESCAPES (numbers provided by the Office of Prisons)	1	0	1	4	7
DEATHS (numbers provided by the Bureau of Medical Services)	106	6	112	122	133
TOTAL RELEASED	24,953	3,492	28,445	26,677	28,177
RETURNED BY:					
PAROLE VIOLATION (TECH.) ¹	544	12	556	631	897
JUDICIAL RELEASE VIOLATION	750	135	885	755	709
POST RELEASE CONTROL VIOLATION ¹	1,516	81	1,597	1,546	1,976
TRANSITIONAL CONTROL VIOLATION	177	40	217	232	174
REACTIVATED SUSPENDED SENTENCE	4	1	5	21	30
ESCAPES RETURNED (numbers provided by the Office of Prisons)	1	0	1	4	7
APPEALS BOND	11	2	13	15	16
TOTAL RETURNED	3,003	271	3,274	3,204	3,809
¹ Numbers taken from DOTS. PRC and Parole offenders being held at reception prior to a violation hearing have caused errors in the monthly report totals, so they are not summed for this report.					
PAROLE VIOLATORS RECOMMISSIONED²	711	18	729	726	781
PRC FELONY VIOLATOR²	751	59	810	953	920

² PVR and PRC Felony Violator numbers from DOTS.

FIGURE 7. RELEASE TYPES CY 2006

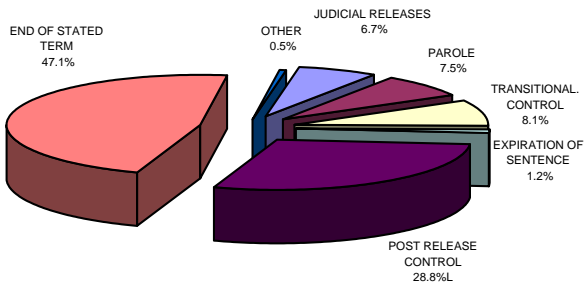
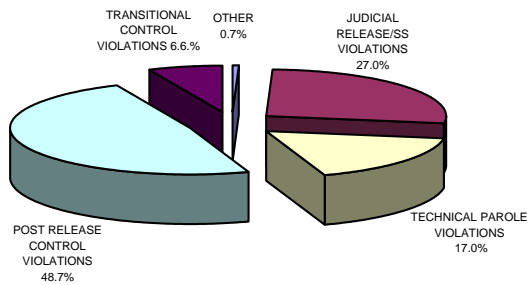


FIGURE 8. RETURN TYPES CY 2006

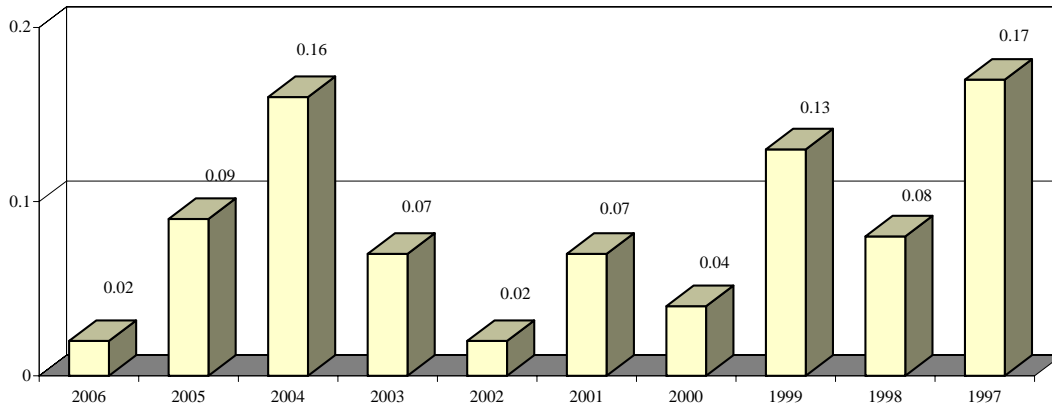


*Other includes the following releases: vacated sentences, appeals bond, escapes and deaths.

**Other includes returns for the following: transitional control violation, return from appeals bond and captured escapees.

ESCAPES AND RATES OF ESCAPE											
	2006	2005	2004	2003	2002	2001	2000	1999	1998	1997	
ACI	0	0	0	0	0	0	0	0	0	0	
BCI	0	0	0	0	0	0	0	0	0	0	
CCI	0	0	0	0	0	0	0	2	0	0	
CMC	0	0	0	0	0	0	0	0	0	0	
CRC	0	0	0	0	0	0	0	0	0	0	
DCI	0	1	0	0	0	0	0	0	0	0	
FPRC	0	0	0	0	0	0	0	0	0	0	
GCI	0	0	0	0	0	1	0	0	1	0	
HCI	0	0	0	0	0	0	0	0	0	0	
LAECI	0	0	0	0	0	0	0	0	0	0	
LCI	0	0	0	0	0	0	0	0	0	0	
LECI	1	0	0	0	0	1	0	0	0	0	
LOCI	0	0	0	0	0	0	2	0	0	2	
LORCI	0	0	0	0	0	0	0	0	0	0	
MACI	0	0	0	0	0	0	0	1	0	0	
MANCI	0	0	2	0	0	0	0	1	0	2	
MCI	0	0	0	0	0	0	0	0	0	2	
MEPRC	0	0	1	0	0	0	0	0	0	0	
NEPRC	0	0	0	0	0	0	0	0	0	0	
NCCI	0	0	0	0	0	0	0	0	0	0	
NCCTF	0	0	0	0	0	0	0	0	0	0	
NCI	0	0	0	0	0	0	0	0	0	0	
OCF	0	0	0	0	0	0	0	0	0	0	
ORW	0	0	0	0	0	0	0	0	0	0	
OSP	0	1	0	0	0	0	0	0	0	0	
PCI	0	2	2	1	0	0	0	1	1	1	
RCI	0	0	2	1	0	0	0	0	1	0	
RICI	0	0	0	0	0	0	0	0	0	0	
SCI	0	0	0	1	1	1	0	1	1	1	
SOCF	0	0	0	0	0	0	0	0	0	0	
TCI	0	0	0	0	0	0	0	0	0	0	
TOCI	0	0	0	0	0	0	0	0	0	0	
WCI	0	0	0	0	0	0	0	0	0	0	
TOTAL	1	4	7	3	1	3	2	6	4	8	
AVG. SYSTEM POPULATION FOR YEAR	46861	44,142	44,100	45,084	45,005	45,196	46,196	47,039	48,581	46,965	
RATE OF ESCAPE PER 1000 INMATES	0.02	0.09	0.16	0.07	0.02	0.07	0.04	0.13	0.08	0.17	

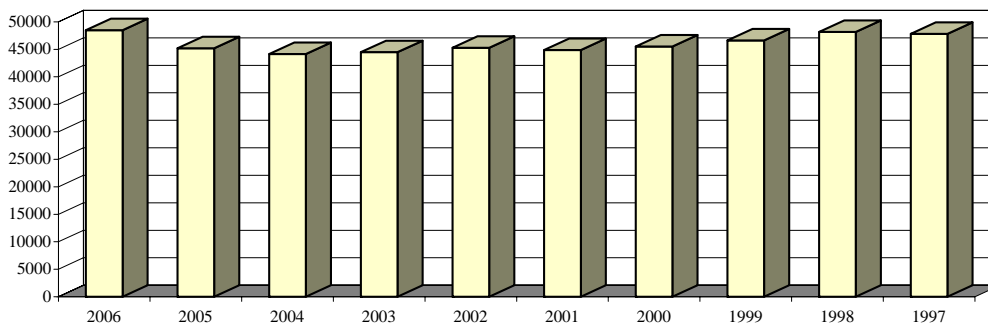
FIGURE 9. RATES OF ESCAPE CY 2006-1997



INSTITUTION POPULATION TRENDS:

END OF THE YEAR INSTITUTIONAL POPULATION TREND FOR 12/31/06 THROUGH 12/31/97										
	2006	2005	2004	2003	2002	2001	2000	1999	1998	1997
ACI	1331	1,323	1,301	1,239	1,067	1,122	1,175	1,406	1,397	1,381
BCI	2636	2,495	2,160	2,094	2,051	2,017	1,981	2,427	2,533	2,433
CCI	2890	2,720	2,695	2,633	2,315	2,187	2,192	2,244	2,731	2,714
CMC Male	113	111	116	108	106	99	101	151	140	150
CMC Female	5	7	7	4	6	4	2	2	4	4
CRC	1766	1,782	1,649	1,521	1,900	1,513	1,777	1,840	1,982	2,267
DCI	481	420	418	415	468	456	445	460	467	489
FPRC	488	478	472	473	479	436	394	407	453	475
GCI	1412	1,417	1,416	1,369	1,343	1,354	1,358	1,601	1,587	1,658
HCI/HCF	462	461	465	455	418	400	396	438	441	446
LaECI	1474	1,474	1,382	1,369	1,387	1,382	1,369	0	0	0
LCI	0	0	0	458	1,543	1,467	1,500	1,530	1,907	2,009
LECI	2251	2,117	1,938	1,912	1,706	1,666	1,778	1,976	2,221	2,273
LOCI	2218	2,079	2,078	2,048	2,033	2,057	1,947	1,885	1,901	1,877
LORCI	1624	1,655	1,454	1,521	1,899	1,467	1,568	1,606	2,053	2,062
MACI	2076	2,009	1,945	2,113	2,083	1,899	2,060	2,290	2,613	2,545
MANCI	2295	2,207	2,374	2,349	2,297	2,308	2,286	2,469	2,637	2,669
MCI	2061	1,727	1,846	1,659	1,694	1,763	1,803	1,918	2,206	2,111
MEPRC	341	338	339	337	318	292	305	306	340	347
NCCI	2291	2,294	2,281	2,213	1,889	1,916	1,938	2,258	2,314	2,316
NCCTF	606	601	547	532	540	542	549	0	0	0
NCI	2308	2,307	2,095	2,086	2,060	1,763	1,832	1,854	2,344	2,377
NEPRC	577	562	531	623	625	606	569	546	592	643
OCF Male	132	109	125	123	161	175	144	158	173	168
OCF Female	4	5	5	2	6	10	4	6	7	7
OCI	0	0	0	0	0	1,636	1,908	1,917	2,000	2,039
ORW Female	2228	1,845	1,954	1,754	1,767	1,696	1,774	1,845	1,830	1,682
ORW Male	0	0	0	0	0	0	0	0	0	0
OSP	519	560	455	468	491	512	593	643	492	0
PCI	2345	1,995	2,084	2,149	2,136	1,834	1,785	1,883	1,940	1,920
RCI	2516	2,217	2,269	2,236	2,248	2,202	2,289	2,398	2,805	2,797
RICI	2464	2,307	2,316	2,254	2,258	2,016	2,073	2,267	102	0
SCI	1512	1,437	1,534	1,590	1,383	1,352	1,368	1,679	1,726	1,742
SOCF	1327	1,087	959	1,047	1,382	1,449	1,435	1,456	1,425	1,425
TCI	971	941	964	1,380	1,371	1,408	1,327	1,409	1,447	1,446
TCI Female	345	293	134	134	0	0	0	0	0	0
TOCI	1083	750	792	791	779	718	222	0	0	0
WCI	1330	1,059	1,042	1,025	1,075	1,144	1,258	1,344	1,361	1,336
TOTAL	48,482	45,189	44,142	44,484	45,284	44,868	45,505	46,619	48,171	47,808

FIGURE 10. INSTITUTION POPULATION TREND 12/31/ 2006-1997



END OF THE YEAR INSTITUTIONAL POPULATION TREND FOR 12/31/96 THROUGH 12/31/87										
	1996	1995	1994	1993	1992	1991	1990	1989	1988	1987
ACI	1,336	1415	1,481	1,355	1,105	1,007	975	885	712	635
BCI	2,283	1891	224	0	0	0	0	0	0	0
CCI	2,580	2621	2,780	2,821	2,802	2,634	2,460	2,217	1,976	1,886
CLEV. P.R.	0	0	0	0	0	0	0	0	0	43
CMC Male	149	154	150	139	0	0	0	0	0	0
CMC Female	6	4	6	7	0	0	0	0	0	0
CRC	1,971	2074	2,204	2,318	2,207	2,223	1,423	1,540	1,333	873
DCI	485	484	478	484	485	481	454	469	473	435
EDP	0	0	0	0	0	0	343	385	193	0
FPRC	489	500	435	429	364	354	1,012	925	167	0
GCI	1,622	1590	1,596	1,435	1,289	1,161	0	0	0	0
HCI/HCF	432	436	417	446	395	392	396	321	327	319
LaECI	0	0	0	0	0	0	0	0	0	0
LCI	2,082	2110	2,051	1,954	1,902	1,909	1,848	1,726	1,719	1,546
LECI	2,105	2198	2,139	2,196	2,188	1,939	1,948	1,935	1,861	1,871
LOCI	1,896	2366	2,335	2,400	2,394	2,447	1,484	0	0	0
LORCI	2,003	1863	2,327	2,329	2,175	1,905	2,250	2,173	1,829	1,987
MACI	2,530	2311	2,315	2,312	2,069	1,942	1,696	1,697	1,360	820
MANCI	2,598	2637	2,320	2,455	2,341	2,119	1,411	0	0	0
MCI	2,109	2093	2,207	2,307	2,104	1,856	1,775	1,937	1,941	1,961
MEPRC	324	349	337	0	0	0	0	0	0	0
NCCI	2,216	2274	724	0	0	0	0	0	0	0
NCCTF	0	0	0	0	0	0	0	0	0	0
NCI	1,452	0	0	0	0	0	0	0	0	0
NEPRC	633	645	613	659	611	491	340	413	173	0
OCF Male	9	0	0	0	0	0	0	0	0	0
OCF Female	162	229	97	0	0	0	0	0	0	0
OCI	2,139	2245	2,340	2,280	2,257	2,266	2,135	2,053	1,709	1,578
ORW Female	1,642	1594	1,490	1,443	1,389	1,412	1,213	1,569	1,280	1,183
ORW Male	0	0	209	249	0	0	0	0	0	0
OSR	0	0	0	0	0	0	0	2,131	2,188	2,317
PCI	1,919	1923	1,942	1,942	1,912	1,792	1,536	1,518	1,265	1,575
RCI	2,767	2618	2,813	2,892	2,646	2,372	2,222	1,920	1,584	1,305
RICI	0	0	0	0	0	0	0	0	0	0
SCI/SOTC	1,819	1751	2,044	1,905	2,018	1,705	1,533	1,466	1,528	1,453
SOCF	1304	1076	1,060	1,093	1,831	1,637	1,829	2,133	2,101	2,156
TCI	1,424	1375	973	948	83	0	0	0	0	0
WCI	1,476	1,512	1,502	1,455	1,424	1,402	1,218	887	142	0
TOTAL	45,962	44,338	41,609	40,253	37,991	35,446	31,501	30,300	25,861	23,943

FIGURE 11. INSTITUTION POPULATION TREND 1996-1987

