



# Ohio Department of Rehabilitation and Correction

1050 Freeway Drive North  
Columbus, Ohio 43229

Bob Taft, Governor

www.drc.state.oh.us

Reginald A. Wilkinson, Director

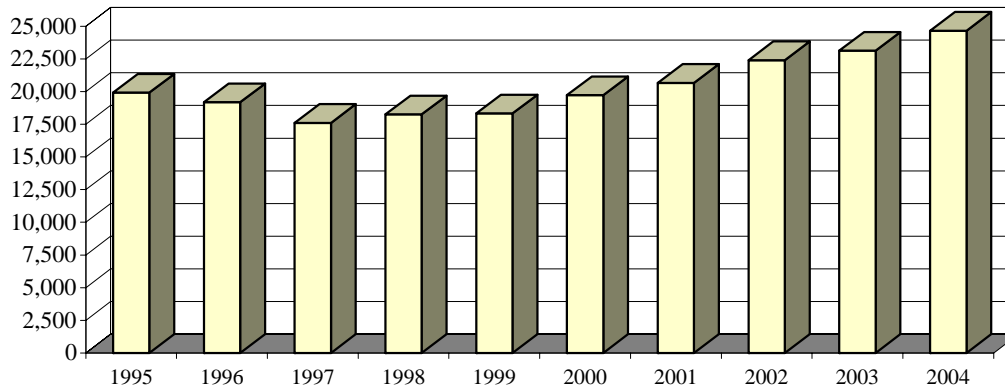
**TO:** ALL CONCERNED  
**FROM:** SENARATH DASSANAYAKA, SENIOR RESEARCHER  
 BUREAU OF RESEARCH  
 OFFICE OF POLICY  
**DATE:** 7/24/2005  
**SUBJECT:** CALENDAR YEAR 2004 SUMMARY OF INSTITUTION STATISTICS

**TOTAL COURT COMMITMENTS TO THE OHIO DEPARTMENT OF REHABILITATION AND CORRECTION:**

<b>OFFICIAL COMMITMENT TOTALS</b>			
CRC RECEPTION - MALE	11,994	MALE INTAKE	21,556
LORCI RECEPTION - MALE	9,562	FEMALE INTAKE	3,106
ORW RECEPTION - FEMALE	3,106	<b>TOTAL</b>	<b>24,662</b>
<b>TOTAL</b>	<b>24,662</b>		

<b>COURT COMMITMENTS TO THE DEPARTMENT CY 1995-2004</b>									
1995	1996	1997	1998	1999	2000	2001	2002	2003	2004
19,915	19,184	17,600	18,252	18,325	19,721	20,669	22,411	23,126	24,662

**FIGURE 1. COURT COMMITMENTS TO THE DEPARTMENT CY 1995-2004**



<b>NUMBER OF COMMITMENTS TO THE DEPARTMENT**</b>								
<b>CY 2004*</b>	<b>CRC MALE</b>	<b>LORCI MALE</b>	<b>MALE N</b>	<b>MALE %</b>	<b>ORW FEMALE</b>	<b>FEMALE %</b>	<b>TOTAL N</b>	<b>TOTAL %</b>
1ST COMMITMENT	6,394	4,260	10,654	49.42%	2,102	67.68%	12,756	51.72%
2ND COMMITMENT	2,694	2,285	4,979	23.10%	520	16.74%	5,499	22.30%
3 OR MORE COMMITMENTS	2,906	3,017	5,923	27.48%	484	15.58%	6,407	25.98%
<b>TOTAL</b>	<b>11,994</b>	<b>9,562</b>	<b>21,556</b>	<b>100.00%</b>	<b>3,106</b>	<b>100.00%</b>	<b>24,662</b>	<b>100.00%</b>

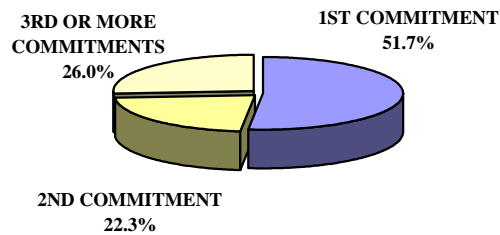
<b>NUMBER OF COMMITMENTS TO THE DEPARTMENT</b>								
<b>CY 2003*</b>	<b>CRC MALE</b>	<b>LORCI MALE</b>	<b>MALE N</b>	<b>MALE %</b>	<b>ORW FEMALE</b>	<b>FEMALE %</b>	<b>TOTAL N</b>	<b>TOTAL %</b>
1ST COMMITMENT	5,846	4,412	10,258	50.13%	1,757	66.00%	12,015	51.95%
2ND COMMITMENT	2,612	2,232	4,844	23.67%	443	16.64%	5,287	22.86%
3 OR MORE COMMITMENTS	2,704	2,658	5,362	26.20%	462	17.36%	5,824	25.18%
<b>TOTAL</b>	<b>11,162</b>	<b>9,302</b>	<b>20,464</b>	<b>100.00%</b>	<b>2,662</b>	<b>100.00%</b>	<b>23,126</b>	<b>100.00%</b>

<b>NUMBER OF COMMITMENTS TO THE DEPARTMENT</b>								
<b>CY 2002*</b>	<b>CRC MALE</b>	<b>LORCI MALE</b>	<b>MALE N</b>	<b>MALE %</b>	<b>ORW FEMALE</b>	<b>FEMALE %</b>	<b>TOTAL N</b>	<b>TOTAL %</b>
1ST COMMITMENT	5,800	4,622	10,422	52.50%	1,702	66.46%	12,124	54.10%
2ND COMMITMENT	2,308	2,146	4,454	22.44%	435	16.99%	4,889	21.82%
3 OR MORE COMMITMENTS	2,355	2,619	4,974	25.06%	424	16.56%	5,398	24.09%
<b>TOTAL</b>	<b>10,463</b>	<b>9,387</b>	<b>19,850</b>	<b>100.00%</b>	<b>2,561</b>	<b>100.00%</b>	<b>22,411</b>	<b>100.00%</b>

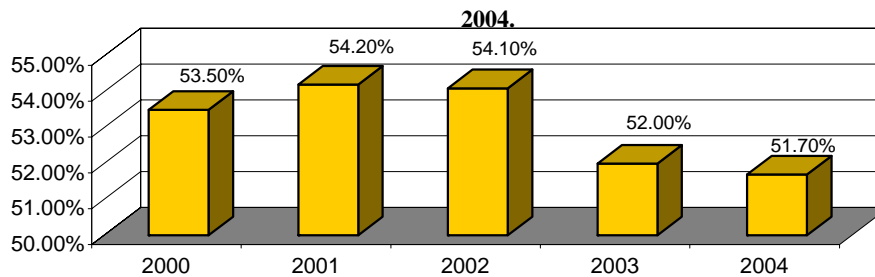
\* THIS TABLE IS PRODUCED FROM A DOTS SUMMARY OF PRIOR OHIO COMMITMENTS.

\*\* Percentages may not total 100 due to rounding

**FIGURE 2. DISTRIBUTION OF COURT COMMITMENTS CY 2004**

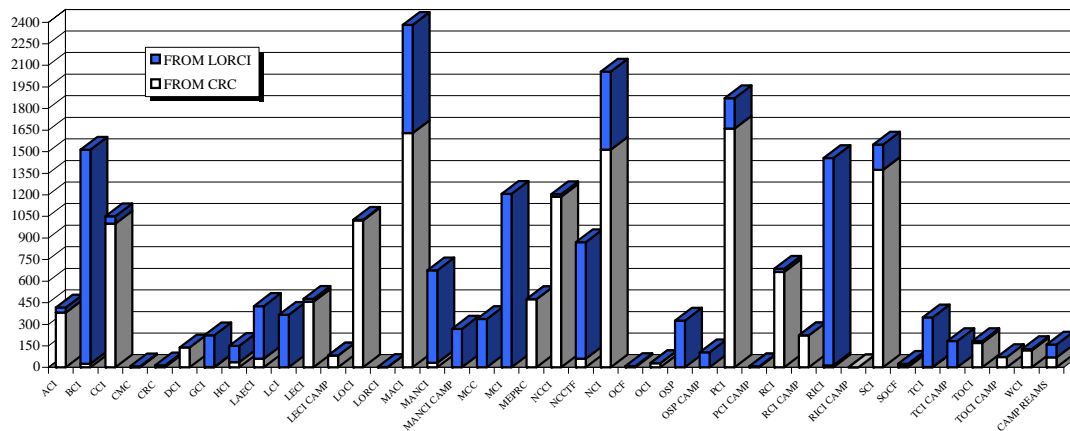


**FIGURE 3. PERCENT OF INMATES SERVING A FIRST COMMITMENT CY 2000-CY**



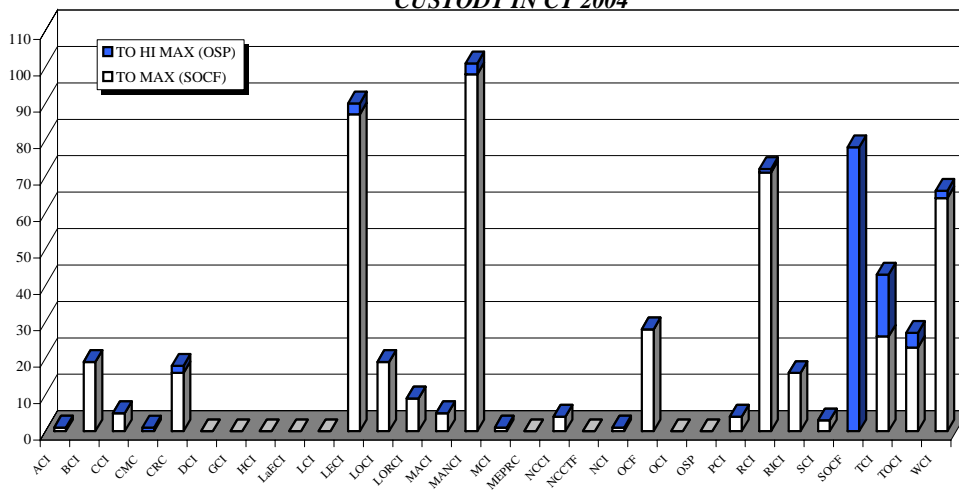
<b>INMATE TRANSFERS FROM MALE RECEPTION CENTERS</b>								
	<b>FROM CRC RECEPTION TO:</b>				<b>FROM LORCI RECEPTION TO:</b>			
	<b>2004</b>	<b>2003</b>	<b>2002</b>	<b>2001</b>	<b>2004</b>	<b>2003</b>	<b>2002</b>	<b>2001</b>
ACI	381	383	297	147	37	39	32	29
BCI	26	1	1	2	1488	1,249	1,104	1,122
CCI	1000	1,140	523	465	50	36	48	24
CMC	4	3	28	3	3	1	12	3
CRC	0	0	0	0	14	16	27	18
DCI	139	196	277	252	1	13	3	0
GCI	4	0	43	22	219	286	106	65
HCI	36	91	70	63	114	59	45	46
LAECI	62	0	9	48	365	701	720	653
LCI	0	77	756	748	365	0	15	37
LECI	458	558	477	313	19	15	8	7
LECI CAMP	83	0	40	181	0	0	0	0
LOCI	1022	662	629	708	4	7	4	3
LORCI	2	3	11	12	1	0	0	6
MACI	1629	1,724	1,228	1,298	752	848	679	722
MANCI	33	34	64	71	643	870	571	334
MANCI CAMP	0	1	3	1	269	94	275	385
MCC	0	0	0	0	337	60	352	330
MCI	1	4	8	7	1206	1,187	603	736
MEPRC	475	480	504	485	0	0	1	32
NCCI	1186	892	366	342	18	22	60	206
NCCTF	61	245	404	405	810	712	705	718
NCI	1513	1,538	1,318	1,191	544	214	247	73
OCF	0	45	38	27	10	14	28	21
OCl	30	0	2	484	0	0	4	89
OSP	1	1	1	0	324	411	177	42
OSP CAMP	0	0	0	0	105	62	310	280
PCI	1661	1,921	1,747	1,523	210	525	915	1,179
PCI CAMP	7	0	38	51	0	0	0	0
RCI	663	810	616	304	23	34	26	23
RCI CAMP	224	23	76	211	0	0	0	0
RICI	15	0	15	16	1440	1,235	1,135	1,001
RICI CAMP	0	0	0	11	0	0	13	27
SCI	1374	1,043	772	580	176	233	141	124
SOCF	17	16	22	24	9	24	45	64
TCI	4	14	6	4	345	741	435	257
TCI CAMP	0	0	0	0	183	86	322	411
TOCI	170	280	291	167	13	28	6	84
TOCI CAMP	72	0	23	106	1	0	8	66
WCI	119	89	184	95	9	2	6	4
CAMP REAMS	71	63	14	233	87	20	140	132
<b>TOTAL</b>	<b>12,543</b>	<b>12,337</b>	<b>10,901</b>	<b>10,600</b>	<b>10,194</b>	<b>9,844</b>	<b>9,328</b>	<b>9,353</b>

**FIGURE 4. INMATES RECEIVED FROM CRC AND LORCI CY 2004**



<b>DISCIPLINARY AND ADMINISTRATIVE TRANSFERS</b>								
	<b>FROM LESSER CUSTODY TO:</b>				<b>FROM HIGHER TO LESSER CUSTODY</b>			
	<b>HI MAX (LEVEL 5) (OSP)</b>		<b>MAXIMUM (LEVEL 4) (SOCF)</b>		<b>HI MAX (LEVEL 5) (OSP)</b>		<b>MAXIMUM (LEVEL 4) (SOCF)</b>	
	<b>2004</b>	<b>2003</b>	<b>2004</b>	<b>2003</b>	<b>2004</b>	<b>2003</b>	<b>2004</b>	<b>2003</b>
ACI	0	0	1	0	0	0	0	9
BCI	0	0	19	14	0	0	13	0
CCI	0	0	5	7	0	2	0	6
CMC	1	0	0	6	2	2	3	6
CRC	2	1	16	16	2	0	20	0
DCI	0	0	0	0	0	0	0	0
GCI	0	0	0	0	0	0	0	0
HCI	0	0	0	0	0	0	0	0
LaECI	0	0	0	0	0	0	0	0
LCI	0	0	0	2	0	18	0	171
LECI	3	11	87	85	8	0	114	4
LOCI	0	0	19	14	1	0	4	0
LORCI	0	0	9	23	0	0	0	2
MACI	0	0	5	9	0	13	4	90
MANCI	3	3	98	63	17	0	35	1
MCI	0	0	1	5	0	0	0	0
MEPRC	0	0	0	0	0	0	0	2
NCCI	0	0	4	5	0	0	1	0
NCCTF	0	0	0	0	0	0	0	3
NCI	0	0	1	5	0	0	1	31
OCF	0	0	28	31	0	0	38	0
OCI	0	0	0	0	0	0	2	0
OSP	0	0	0	0	0	0	3	0
PCI	0	0	4	0	0	1	0	18
RCI	1	0	71	75	12	5	101	136
RICI	0	0	16	12	1	2	2	1
SCI	0	0	3	11	0	0	2	1
SOCF	78	140	0	0	49	69	0	0
TCI	17	1	26	11	11	4	23	61
TOCI	4	0	23	24	8	2	13	35
WCI	2	6	64	77	2	12	70	102
<b>TOTAL</b>	<b>111</b>	<b>162</b>	<b>500</b>	<b>495</b>	<b>113</b>	<b>130</b>	<b>449</b>	<b>679</b>

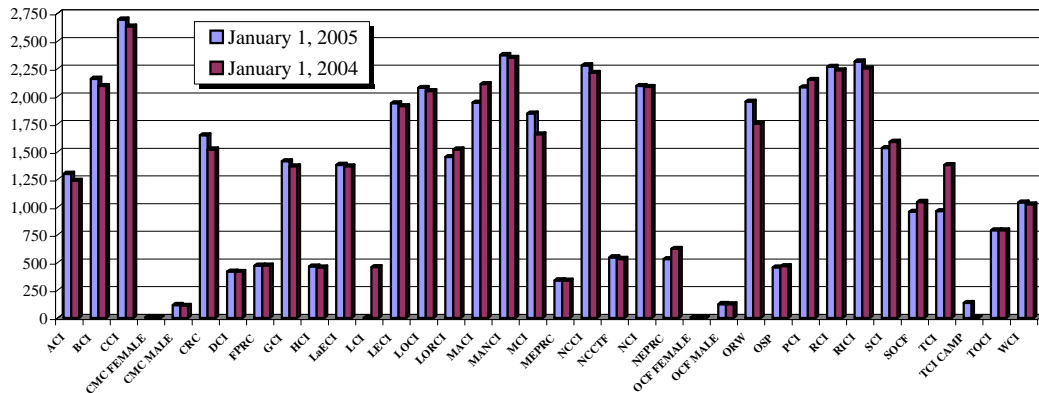
**FIGURE 5. TRANSFERS TO HIGH MAX (LEVEL 5) AND MAXIMUM (LEVEL 4) CUSTODY IN CY 2004**



**END OF CALENDAR YEAR INSTITUTIONAL POPULATION COUNT:**

<b>INSTITUTION POPULATION TREND (PREVIOUS YEAR COMPARISON)</b>		<b>1/1/2005</b>	<b>1/1/2004</b>	<b>DIFFERENCE</b>	
ACI	(Allen Correctional Institution)	1,301	1,239	62	5.0%
BCI	(Belmont Correctional Institution)	2,160	2,094	66	3.2%
CCI	(Chillicothe Correctional Institution)	2,695	2,633	62	2.4%
CMC MALE	(Correctional Medical Center)	116	108	8	7.4%
CRC	(Correctional Reception Center)	1,649	1,521	128	8.4%
DCI	(Dayton Correctional Institution)	418	415	3	0.7%
GCI	(Grafton Correctional Institution)	1,416	1,369	47	3.4%
HCI	(Hocking Correctional Institution)	465	455	10	2.2%
LaECI	(Lake Erie Correctional Institution)	1,382	1,369	13	0.9%
LCI	(Lima Correctional Institution)	0	458	-458	-100.0%
LECI	(Lebanon Correctional Institution)	1,938	1,912	26	1.4%
LOCI	(London Correctional Institution)	2,078	2,048	30	1.5%
LORCI	(Lorain Correctional Institution)	1,454	1,521	-67	-4.4%
MACI	(Madison Correctional Institution)	1,945	2,113	-168	-8.0%
MANCI	(Mansfield Correctional Institution)	2,374	2,349	25	1.1%
MCI	(Marion Correctional Institution)	1,846	1,659	187	11.3%
MEPRC	(Montgomery Education & Pre-Release Center)	339	337	2	0.6%
NCCI	(North Central Correctional Institution)	2,281	2,213	68	3.1%
NCCTF	(North Coast Correctional Treatment Facility)	547	532	15	2.8%
NCI	(Noble Correctional Institution)	2,095	2,086	9	0.4%
OCF MALE	(Oakwood Correctional Facility)	125	123	2	1.6%
OSP	(Ohio State Penitentiary)	455	468	-13	-2.8%
PCI	(Pickaway Correctional Institution)	2,084	2,149	-65	-3.0%
RCI	(Ross Correctional Institution)	2,269	2,236	33	1.5%
RICI	(Richland Correctional Institution)	2,316	2,254	62	2.8%
SCI	(Southeastern Correctional Institution)	1,534	1,590	-56	-3.5%
SOCF	(Southern Ohio Correctional Facility)	959	1,047	-88	-8.4%
TCI	(Trumbull Correctional Institution)	964	1,380	-416	-30.1%
TOCI	(Toledo Correctional Institution)	792	791	1	0.1%
WCI	(Warren Correctional Institution)	1,042	1,025	17	1.7%
<b>MALE TOTAL</b>		<b>41,039</b>	<b>41,494</b>	<b>-455</b>	<b>-1.1%</b>
CMC FEMALE	(Correctional Medical Center)	7	4	3	75.0%
FPRC	(Franklin Pre-Release Center)	472	473	-1	-0.2%
NEPRC	(Northeast Pre-Release Center)	531	623	-92	-14.8%
OCF FEMALE	(Oakwood Correctional Facility)	5	2	3	150.0%
ORW	(Ohio Reformatory for Women)	1,954	1,754	200	11.4%
TCI CAMP	(Trumbull Corr. Institution Camp)	134	0	134	0.0%
<b>FEMALE TOTAL</b>		<b>3,103</b>	<b>2,856</b>	<b>247</b>	<b>8.6%</b>
<b>COMBINED MALE / FEMALE TOTAL</b>		<b>44,142</b>	<b>44,350</b>	<b>-208</b>	<b>-0.5%</b>

**FIGURE 6. COMPARISON OF INSTITUTION POPULATION COUNT ON 1/1/05 and 1/1/04**



**RELEASES AND RETURNS:**

<b>INSTITUTIONAL STATISTICS</b>					
	<b>CY 2004 MALE</b>	<b>CY 2004 FEMALE</b>	<b>CY 2004 TOTAL</b>	<b>CY 2003 TOTAL</b>	<b>CY 2002 TOTAL</b>
<b>RELEASED BY:</b>					
SUSPENDED SENTENCE	17	2	19	34	40
VACATED SENTENCE	11	4	15	5	15
REGULAR PAROLE	3,835	115	3,950	4,964	4,610
SHOCK PAROLE	4	2	6	2	6
JUDICIAL RELEASE	1,344	347	1,691	1,685	1,597
POST RELEASE CONTROL	6,843	744	7,587	8,537	9,057
TRANSITIONAL CONTROL	2,007	272	2,279	1,472	1,233
EXPIRATION OF SENTENCE	466	13	479	734	1,100
END OF STATED TERM	10,381	1,600	11,981	10,154	7,992
APPEALS BOND	24	6	30	25	33
ESCAPES (numbers provided by the Office of Prisons)	7	0	7	3	1
DEATHS (numbers provided by the Bureau of Medical Services)	127	6	133	106	117
<b>TOTAL RELEASED</b>	<b>25,066</b>	<b>3,111</b>	<b>28,177</b>	<b>27,721</b>	<b>25,801</b>

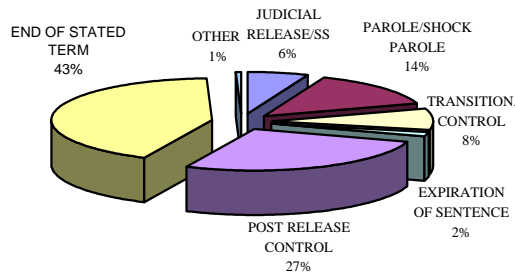
<b>RETURNED BY:</b>					
PAROLE VIOLATION (TECH.) <sup>1</sup>	869	28	897	930	1,058
JUDICIAL RELEASE VIOLATION	596	113	709	780	620
POST RELEASE CONTROL VIOLATION <sup>1</sup>	1,870	106	1,976	1,634	1,518
TRANSITIONAL CONTROL VIOLATION	126	48	174	195	128
REACTIVATED SUSPENDED SENTENCE	26	4	30	20	72
ESCAPES RETURNED (numbers provided by the Office of Prisons)	7	0	7	3	4
APPEALS BOND	12	4	16	15	10
<b>TOTAL RETURNED</b>	<b>3,506</b>	<b>303</b>	<b>3,809</b>	<b>3,577</b>	<b>3,410</b>

<sup>1</sup> Numbers taken from DOTS. PRC and Parole offenders being held at reception prior to a violation hearing have caused errors in the monthly report totals, so they are not summed for this report.

<b>PAROLE VIOLATORS RECOMMISSIONED<sup>2</sup></b>	765	16	781	695
<b>PRC FELONY VIOLATOR<sup>2</sup></b>	855	65	920	1,252

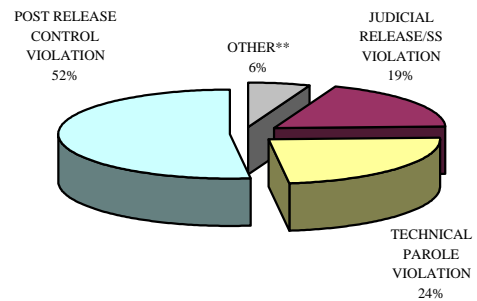
<sup>2</sup> PVR and PRC Felony Violator numbers from DOTS.

**FIGURE 7. RELEASE TYPES CY 2004**



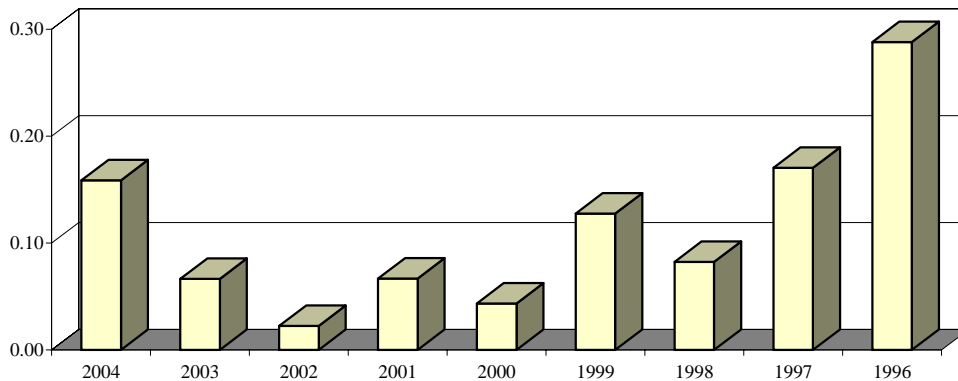
\*Other includes the following releases: vacated sentences, appeals bond, escapes and deaths.

**FIGURE 8. RETURN TYPES CY 2004**



\*\*Other includes returns for the following: transitional control violation, return from appeals bond and captured escapes.

<b>ESCAPES AND RATES OF ESCAPE</b>										
	<b>2004</b>	<b>2003</b>	<b>2002</b>	<b>2001</b>	<b>2000</b>	<b>1999</b>	<b>1998</b>	<b>1997</b>	<b>1996</b>	
ACI	0	0	0	0	0	0	0	0	0	0
BCI	0	0	0	0	0	0	0	0	0	1
CCI	0	0	0	0	0	0	2	0	0	0
CMC	0	0	0	0	0	0	0	0	0	0
CRC	0	0	0	0	0	0	0	0	0	0
DCI	0	0	0	0	0	0	0	0	0	0
FPRC	0	0	0	0	0	0	0	0	0	0
GCI	0	0	0	1	0	0	0	1	0	2
HCI	0	0	0	0	0	0	0	0	0	0
LAECI	0	0	0	0	0	0	0	0	0	0
LCI	0	0	0	0	0	0	0	0	0	0
LECI	0	0	0	1	0	0	0	0	0	0
LOCI	0	0	0	0	2	0	0	2	0	0
LORCI	0	0	0	0	0	0	0	0	0	0
MACI	0	0	0	0	0	1	0	0	0	1
MANCI	2	0	0	0	0	1	0	2	3	3
MCI	0	0	0	0	0	0	0	2	0	0
MEPRC	1	0	0	0	0	0	0	0	0	0
NEPRC	0	0	0	0	0	0	0	0	0	0
NCCI	0	0	0	0	0	0	0	0	0	1
NCCTF	0	0	0	0	0	0	0	0	0	0
NCI	0	0	0	0	0	0	0	0	0	0
OCF	0	0	0	0	0	0	0	0	0	0
OCI	0	0	0	0	0	0	0	0	0	0
ORW	0	0	0	0	0	0	0	0	0	0
OSP	0	0	0	0	0	0	0	0	0	0
PCI	2	1	0	0	0	1	1	1	2	2
RCI	2	1	0	0	0	0	1	0	1	1
RICI	0	0	0	0	0	0	0	0	0	0
SCI	0	1	1	1	0	1	1	1	1	1
SOCF	0	0	0	0	0	0	0	0	0	0
TCI	0	0	0	0	0	0	0	0	0	1
TOCI	0	0	0	0	0	0	0	0	0	0
WCI	0	0	0	0	0	0	0	0	0	0
<b>TOTAL</b>	<b>7</b>	<b>3</b>	<b>1</b>	<b>3</b>	<b>2</b>	<b>6</b>	<b>4</b>	<b>8</b>	<b>13</b>	
<b>AVG. SYSTEM</b>										
<b>POPULATION</b>										
<b>FOR YEAR</b>	<b>44,100</b>	<b>45,084</b>	<b>45,005</b>	<b>45,196</b>	<b>46,196</b>	<b>47,039</b>	<b>48,581</b>	<b>46,965</b>	<b>45,109</b>	
<b>RATE OF</b>										
<b>ESCAPE PER</b>										
<b>1000 INMATES</b>	<b>0.16</b>	<b>0.07</b>	<b>0.02</b>	<b>0.07</b>	<b>0.04</b>	<b>0.13</b>	<b>0.08</b>	<b>0.17</b>	<b>0.29</b>	

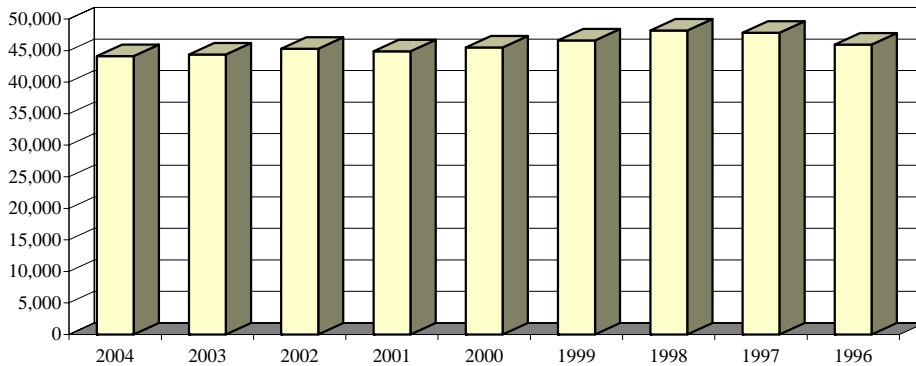


**FIGURE 9. RATES OF ESCAPE CY 2004-1996**

**INSTITUTION POPULATION TRENDS:**

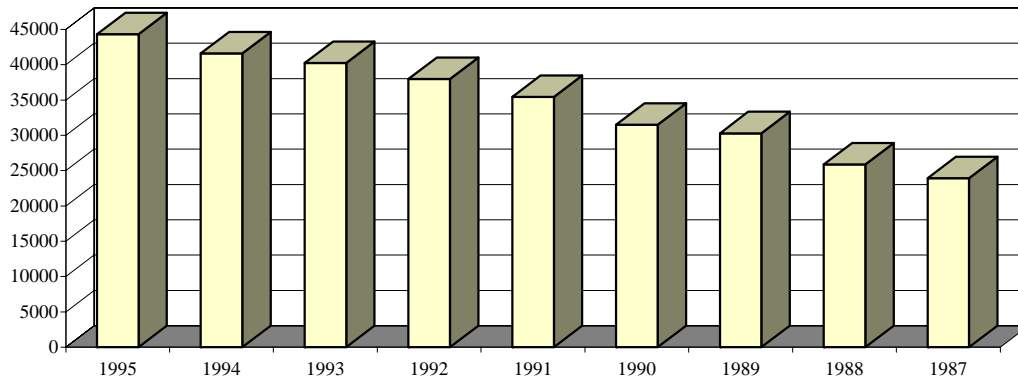
<b>END OF THE YEAR INSTITUTIONAL POPULATION TREND FOR 12/31/04 THROUGH 12/31/96</b>										
	<b>2004</b>	<b>2003</b>	<b>2002</b>	<b>2001</b>	<b>2000</b>	<b>1999</b>	<b>1998</b>	<b>1997</b>	<b>1996</b>	
ACI	1,301	1,239	1,067	1,122	1,175	1,406	1,397	1,381	1,336	
BCI	2,160	2,094	2,051	2,017	1,981	2,427	2,533	2,433	2,283	
CCI	2,695	2,633	2,315	2,187	2,192	2,244	2,731	2,714	2,580	
CMC MALE	116	108	106	99	101	151	140	150	149	
CMC FEMALE	7	4	6	4	2	2	4	4	6	
CRC	1,649	1,521	1,900	1,513	1,777	1,840	1,982	2,267	1,971	
DCI	418	415	468	456	445	460	467	489	485	
FPRC	472	473	479	436	394	407	453	475	489	
GCI	1,416	1,369	1,343	1,354	1,358	1,601	1,587	1,658	1,622	
HCI/HCF	465	455	418	400	396	438	441	446	432	
LaECI	1,382	1,369	1,387	1,382	1,369	0	0	0	0	
LCI	0	458	1,543	1,467	1,500	1,530	1,907	2,009	2,082	
LECI	1,938	1,912	1,706	1,666	1,778	1,976	2,221	2,273	2,105	
LOCI	2,078	2,048	2,033	2,057	1,947	1,885	1,901	1,877	1,896	
LORCI	1,454	1,521	1,899	1,467	1,568	1,606	2,053	2,062	2,003	
MACI	1,945	2,113	2,083	1,899	2,060	2,290	2,613	2,545	2,530	
MANCI	2,374	2,349	2,297	2,308	2,286	2,469	2,637	2,669	2,598	
MCI	1,846	1,659	1,694	1,763	1,803	1,918	2,206	2,111	2,109	
MEPRC	339	337	318	292	305	306	340	347	324	
NCCI	2,281	2,213	1,889	1,916	1,938	2,258	2,314	2,316	2,216	
NCCTF	547	532	540	542	549	0	0	0	0	
NCI	2,095	2,086	2,060	1,763	1,832	1,854	2,344	2,377	1,452	
NEPRC	531	623	625	606	569	546	592	643	633	
OCF MALE	125	123	161	175	144	158	173	168	162	
OCF FEMALE	5	2	6	10	4	6	7	7	9	
OCI	0	0	0	1,636	1,908	1,917	2,000	2,039	2,139	
ORW FEMALE	1,954	1,754	1,767	1,696	1,774	1,845	1,830	1,682	1,642	
ORW MALE	0	0	0	0	0	0	0	0	0	
OSP	455	468	491	512	593	643	492	0	0	
PCI	2,084	2,149	2,136	1,834	1,785	1,883	1,940	1,920	1,919	
RCI	2,269	2,236	2,248	2,202	2,289	2,398	2,805	2,797	2,767	
RICI	2,316	2,254	2,258	2,016	2,073	2,267	102	0	0	
SCI	1,534	1,590	1,383	1,352	1,368	1,679	1,726	1,742	1,819	
SOCF	959	1,047	1,382	1,449	1,435	1,456	1,425	1,425	1,304	
TCI	964	1,380	1,371	1,408	1,327	1,409	1,447	1,446	1,424	
TCI FEMALE	134	0	0	0	0	0	0	0	0	
TOCI	792	791	779	718	222	0	0	0	0	
WCI	1,042	1,025	1,075	1,144	1,258	1,344	1,361	1,336	1,476	
<b>TOTAL</b>	<b>44,142</b>	<b>44,350</b>	<b>45,284</b>	<b>44,868</b>	<b>45,505</b>	<b>46,619</b>	<b>48,171</b>	<b>47,808</b>	<b>45,962</b>	

**FIGURE 10. INSTITUTION POPULATION TREND CY 2004-1996**





<b>END OF THE YEAR INSTITUTIONAL POPULATION TREND FOR 12/31/95 THROUGH 12/31/87</b>									
	<b>1995</b>	<b>1994</b>	<b>1993</b>	<b>1992</b>	<b>1991</b>	<b>1990</b>	<b>1989</b>	<b>1988</b>	<b>1987</b>
ACI	1415	1,481	1,355	1,105	1,007	975	885	712	635
BCI	1891	224	0	0	0	0	0	0	0
CCI	2621	2,780	2,821	2,802	2,634	2,460	2,217	1,976	1,886
CLEV. P.R.	0	0	0	0	0	0	0	0	43
CMC MALE	154	150	139	0	0	0	0	0	0
CMC FEMALE	4	6	7	0	0	0	0	0	0
CRC	2074	2,204	2,318	2,207	2,223	1,423	1,540	1,333	873
DCI	484	478	484	485	481	454	469	473	435
EDP	0	0	0	0	0	343	385	193	0
FPRC	500	435	429	364	354	1,012	925	167	0
GCI	1590	1,596	1,435	1,289	1,161	0	0	0	0
HCI/HCF	436	417	446	395	392	396	321	327	319
LaECI	0	0	0	0	0	0	0	0	0
LCI	2110	2,051	1,954	1,902	1,909	1,848	1,726	1,719	1,546
LECI	2198	2,139	2,196	2,188	1,939	1,948	1,935	1,861	1,871
LOCI	2366	2,335	2,400	2,394	2,447	1,484	0	0	0
LORCI	1863	2,327	2,329	2,175	1,905	2,250	2,173	1,829	1,987
MACI	2311	2,315	2,312	2,069	1,942	1,696	1,697	1,360	820
MANCI	2637	2,320	2,455	2,341	2,119	1,411	0	0	0
MCI	2093	2,207	2,307	2,104	1,856	1,775	1,937	1,941	1,961
MEPRC	349	337	0	0	0	0	0	0	0
NCCI	2274	724	0	0	0	0	0	0	0
NCCTF	0	0	0	0	0	0	0	0	0
NCI	0	0	0	0	0	0	0	0	0
NEPRC	645	613	659	611	491	340	413	173	0
OCF MALE	229	97	0	0	0	0	0	0	0
OCF FEMALE	0	0	0	0	0	0	0	0	0
OCI	2245	2,340	2,280	2,257	2,266	2,135	2,053	1,709	1,578
ORW FEMALE	1594	1,490	1,443	1,389	1,412	1,213	1,569	1,280	1,183
ORW MALE	0	209	249	0	0	0	0	0	0
OSP	0	0	0	0	0	0	2,131	2,188	2,317
PCI	1923	1,942	1,942	1,912	1,792	1,536	1,518	1,265	1,575
RCI	2618	2,813	2,892	2,646	2,372	2,222	1,920	1,584	1,305
RICI	0	0	0	0	0	0	0	0	0
SCI/SOTC	1751	2,044	1,905	2,018	1,705	1,533	1,466	1,528	1,453
SOCF	1076	1,060	1,093	1,831	1,637	1,829	2,133	2,101	2,156
TCI	1375	973	948	83	0	0	0	0	0
WCI	1,512	1,502	1,455	1,424	1,402	1,218	887	142	0
<b>TOTAL</b>	<b>44338</b>	<b>41,609</b>	<b>40,253</b>	<b>37,991</b>	<b>35,446</b>	<b>31,501</b>	<b>30,300</b>	<b>25,861</b>	<b>23,943</b>



**FIGURE 11. INSTITUTION POPULATION TREND 1995-1987**