



Ohio Department of Rehabilitation and Correction

770 West Broad Street
Columbus OH 43222

Ted Strickland, Gov.

www.drc.ohio.gov

Terry J. Collins, Director

TO: ALL CONCERNED
FROM: SENARATH DASSANAYAKA, SENIOR RESEARCHER
BUREAU OF RESEARCH
OFFICE OF POLICY

DATE: 1/7/2009

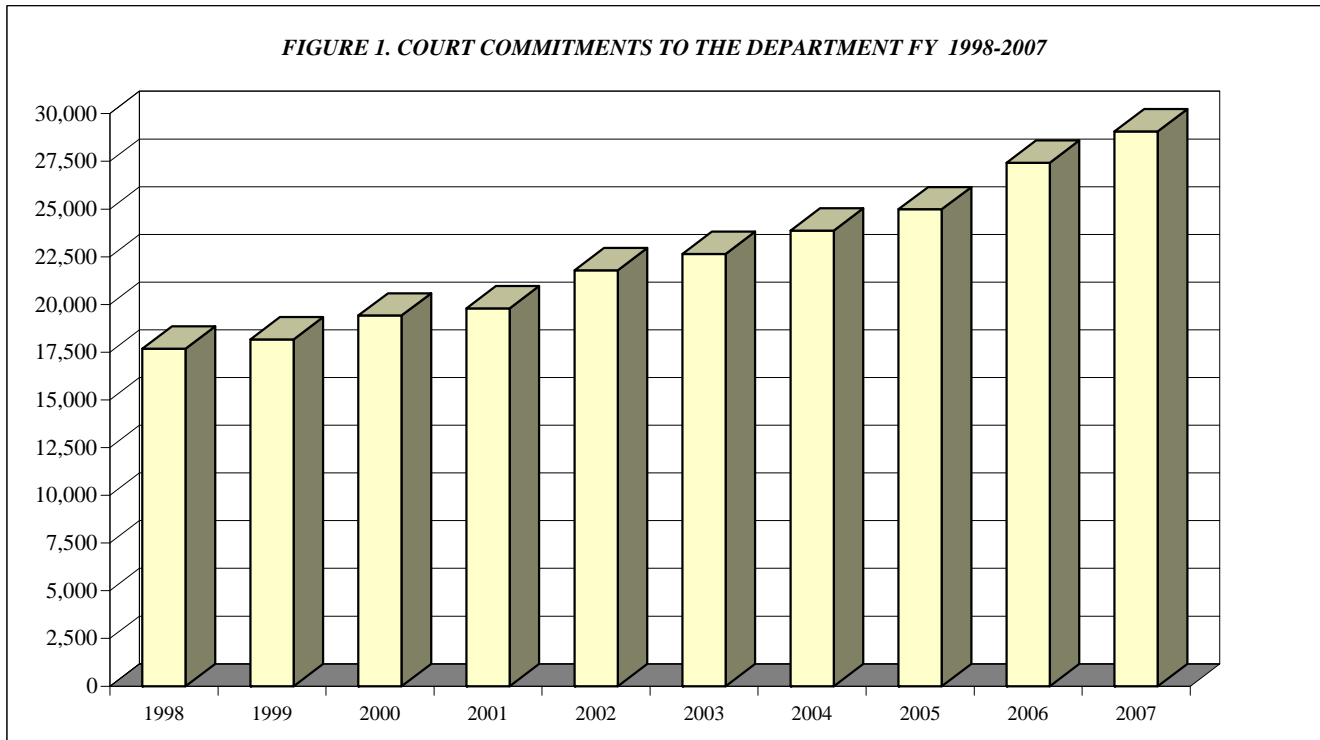
SUBJECT: FISCAL YEAR 2007 SUMMARY OF INSTITUTION STATISTICS

TOTAL COURT COMMITMENTS TO THE OHIO DEPARTMENT OF REHABILITATION AND CORRECTION

OFFICIAL COMMITMENT TOTALS			
CRC RECEPTION - MALE	14,465	MALE INTAKE	25,222
LORCI RECEPTION - MALE	10,757	FEMALE INTAKE	3,847
ORW RECEPTION - FEMALE	3,847	TOTAL	29,069
TOTAL	29,069		

COURT COMMITMENTS TO THE DEPARTMENT FY 1998-2007									
1998	1999	2000	2001	2002	2003	2004	2005	2006	2007
17,681	18,165	19,418	19,801	21,787	22,649	23,866	24,985	27,431	29,069

FIGURE 1. COURT COMMITMENTS TO THE DEPARTMENT FY 1998-2007

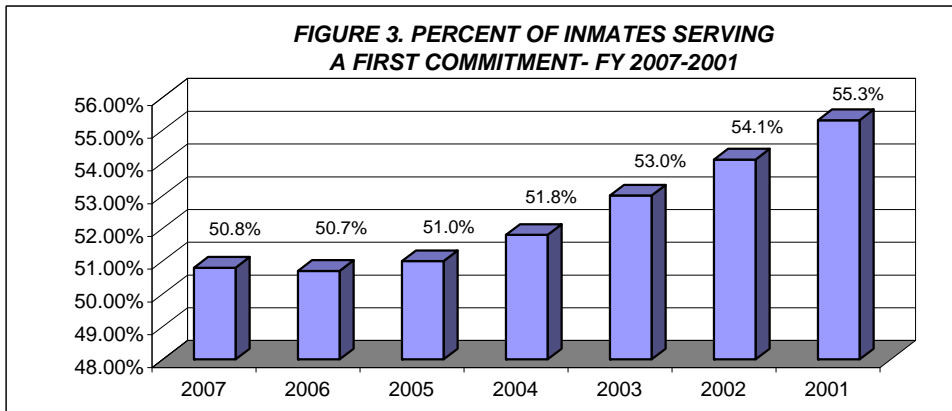
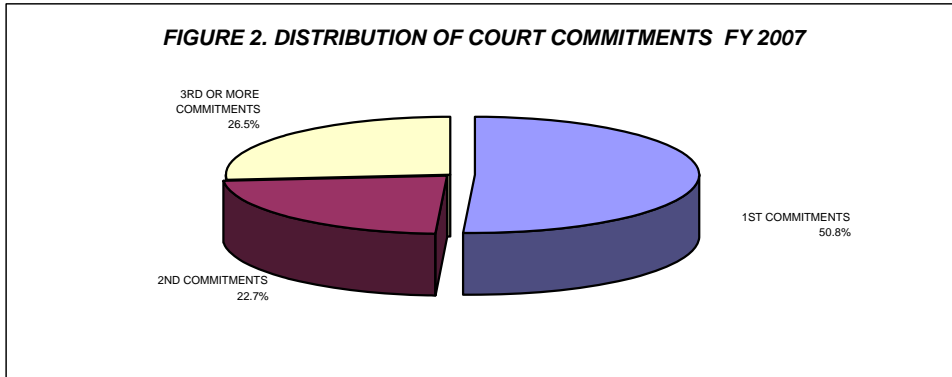


NUMBER OF COMMITMENTS TO THE DEPARTMENT								
FY 2007*	CRC MALE	LORCI MALE	MALE N	MALE %	ORW FEMALE	FEMALE %	TOTAL N	TOTAL %
1ST COMMITMENTS	7,414	4,748	12,162	48.2%	2611	67.9%	14,773	50.8%
2ND COMMITMENTS	3,417	2,506	5,923	23.5%	677	17.6%	6,600	22.7%
3RD OR MORE COMMIT.	3,634	3,503	7,137	28.3%	559	14.5%	7,696	26.5%
TOTAL	14,465	10,757	25,222	100.0%	3,847	100.0%	29,069	100.0%

NUMBER OF COMMITMENTS TO THE DEPARTMENT								
FY 2006*	CRC MALE	LORCI MALE	MALE N	MALE %	ORW FEMALE	FEMALE %	TOTAL N	TOTAL %
1ST COMMITMENTS	6,902	4,694	11,596	48.5%	2325	66.3%	13,921	50.7%
2ND COMMITMENTS	3,051	2,386	5,437	22.7%	632	18.0%	6,069	22.1%
3RD OR MORE COMMIT.	3,471	3,422	6,893	28.8%	548	15.6%	7,441	27.1%
TOTAL	13,424	10,502	23,926	100.0%	3,505	100.0%	27,431	100.0%

NUMBER OF COMMITMENTS TO THE DEPARTMENT								
FY 2005*	CRC MALE	LORCI MALE	MALE N	MALE %	ORW FEMALE	FEMALE %	TOTAL N	TOTAL %
1ST COMMITMENTS	6,433	4,189	10,622	48.6%	2,110	67.1%	12,732	51.0%
2ND COMMITMENTS	2,809	2,219	5,028	23.0%	574	18.3%	5,602	22.4%
3RD OR MORE COMMIT.	3,185	3,006	6,191	28.3%	460	14.6%	6,651	26.6%
TOTAL	12,427	9,414	21,841	100.0%	3,144	100.0%	24,985	100.0%

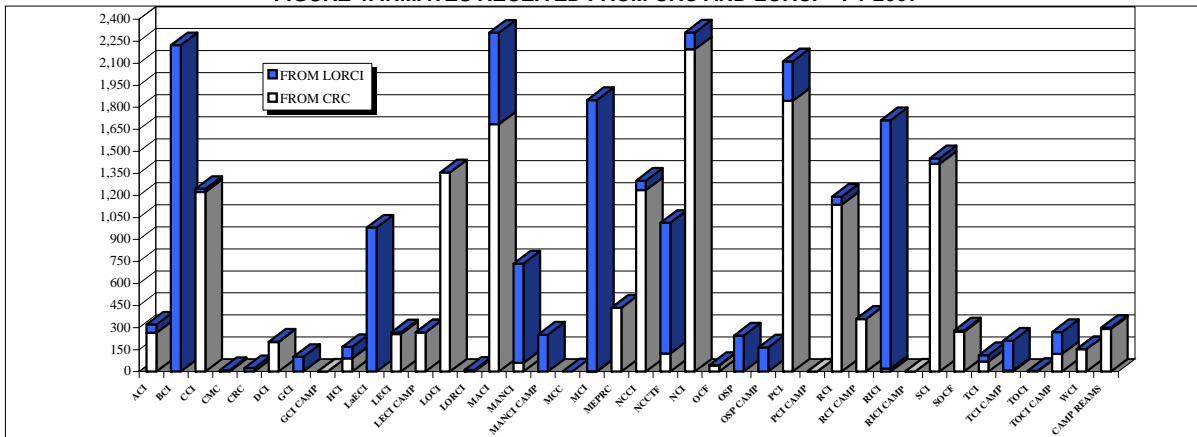
* THIS TABLE IS PRODUCED FROM A DOTS SUMMARY OF PRIOR OHIO COMMITMENTS.



INMATE TRANSFERS FROM MALE RECEPTION CENTERS

	FROM CRC RECEPTION TO:				FROM LORCI RECEPTION TO:			
	2007	2006	2005	2004	2007	2006	2005	2004
ACI	264	279	414	435	57	47	34	38
BCI	0	1	0	27	2,223	2181	1598	1,423
CCI	1,223	1178	1,144	1,032	22	43	55	36
CMC	7	3	2	7	3	3	4	1
CRC	0	0	0	0	24	22	44	15
DCI	202	108	100	163	2	3	0	1
GCI	0	2	4	0	101	183	198	394
GCI CAMP	0	0	3	0	0	50	114	31
HCF	90	77	0	87	78	65	72	70
LaECI	0	0	91	0	981	1110	913	879
LECI	256	507	350	547	11	56	34	19
LECI CAMP	268	358	186	18	0	0	0	0
LOCI	1,356	1293	1,112	860	1	1	3	6
LORCI	0	0	1	2	13	22	0	1
MACI	1,685	1848	1,675	1,792	623	598	553	880
MANCI	59	47	47	30	677	516	579	804
MANCI CAMP	0	5	0	1	252	241	321	142
MCC	0	64	0	0	1	314	364	159
MCI	4	122	1	3	1,846	1058	1,178	1,205
MEPRC	435	423	448	442	0	0	0	0
NCCI	1,236	990	1,187	1,059	64	137	79	13
NCCTF	124	54	83	144	890	1038	853	761
NCI	2,195	2634	1,814	1,516	114	88	481	498
OCF	42	56	44	32	3	12	4	11
OSP	1	4	0	16	245	341	242	410
OSP CAMP	0	0	0	1	165	120	142	59
PCI	1,844	1295	1,213	1,858	269	139	123	383
PCI CAMP	0	0	7	0	0	0	0	0
RCI	1,137	458	425	765	54	23	24	37
RCI CAMP	359	462	428	60	0	0	0	0
RICI	21	2	15	0	1,691	1624	1,455	1,384
RICI CAMP	0	0	0	0	0	0	0	0
SCI	1,415	1112	1,243	1,326	38	40	80	232
SCI CAMP	272	240	190	41	9	12	55	232
SOCF	69	38	26	12	44	24	10	14
TCI	7	3	4	9	204	157	149	616
TCI CAMP	5	8	0	0	0	0	82	133
TOCI	120	70	91	214	150	9	18	31
TOCI CAMP	153	172	139	32	0	0	0	1
WCI	290	144	93	109	9	6	19	2
TOTAL	15,139	14057	12,580	12,640	10,864	10,283	9,880	10,921

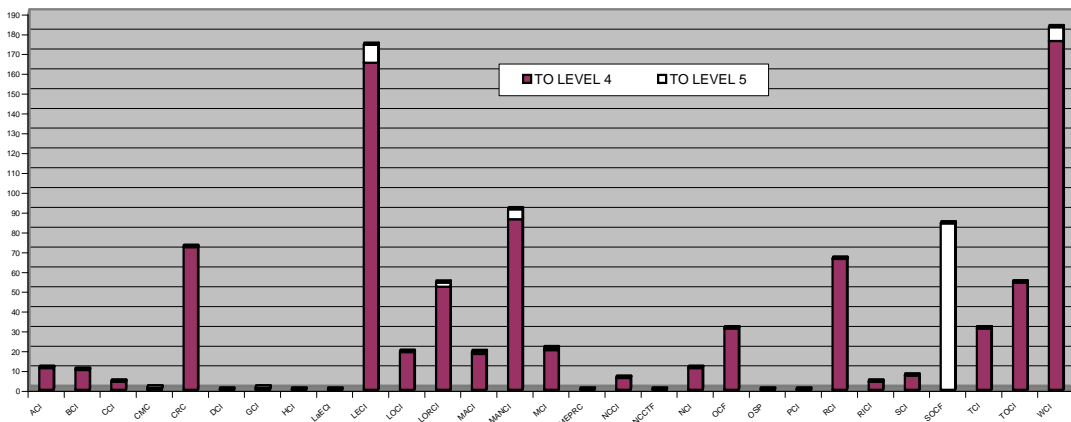
FIGURE 4. INMATES RECEIVED FROM CRC AND LORCI - FY 2007



DISCIPLINARY AND ADMINISTRATIVE TRANSFERS

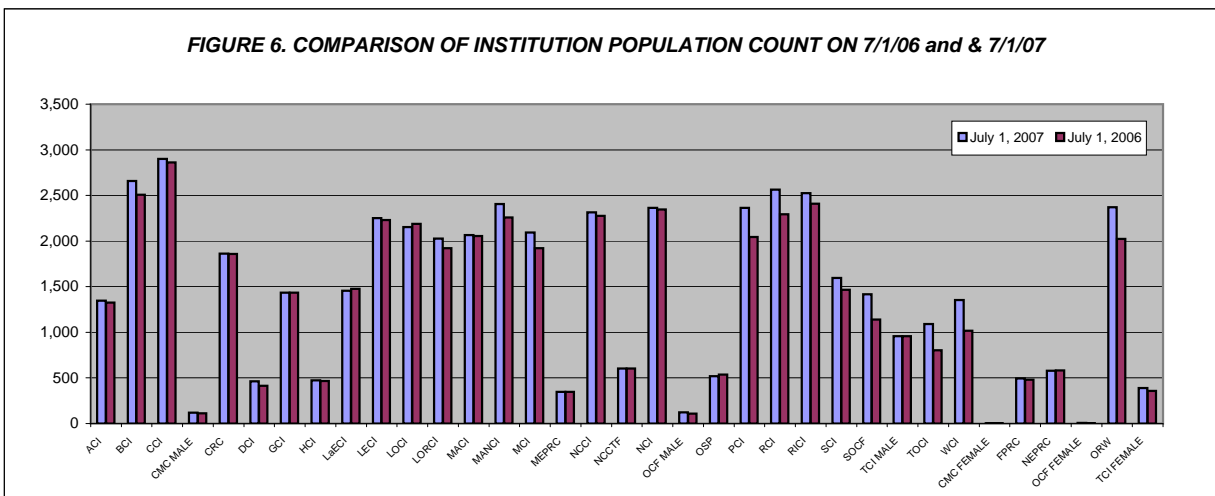
	FROM LESSER CUSTODY TO:				FROM HIGHER TO LESSER CUSTODY			
	LEVEL 5 (OSP)		LEVEL 4 (SOCF)		LEVEL 5 (OSP)		LEVEL 4 (SOCF)	
	2007	2006	2007	2006	2007	2006	2007	2006
ACI	0	0	11	9	0	0	0	2
BCI	0	0	10	7	0	0	4	4
CCI	0	0	4	0	0	0	0	1
CMC	0	0	1	0	0	0	4	0
CRC	0	3	72	38	1	1	23	13
DCI	0	0	0	0	0	0	0	0
GCI	0	0	1	0	0	0	0	0
HCF	0	0	0	0	0	0	0	0
LaECI	0	0	0	0	0	0	0	0
LECI	9	5	165	120	10	4	88	67
LOCI	0	1	19	14	1	0	6	2
LORCI	2	2	52	25	0	0	1	0
MACI	1	0	18	9	0	0	3	1
MANCI	5	6	86	83	21	25	43	19
MCI	1	1	20	1	0	0	2	0
MEPRC	0	0	0	0	0	0	0	0
NCCI	0	0	6	0	0	1	1	0
NCCTF	0	0	0	0	0	0	0	0
NCI	0	0	11	12	0	0	8	4
OCF	0	5	31	38	2	5	32	32
OSP	0	0	0	0	0	0	0	3
PCI	0	0	0	0	0	0	1	0
RCI	0	3	66	106	2	6	29	84
RICI	0	0	4	3	1	0	1	2
SCI	0	0	7	7	0	0	5	1
SOCF	84	30	0	0	47	65	0	0
TCI	0	1	31	21	3	12	9	12
TOCI	0	0	54	22	5	13	19	11
WCI	7	0	176	84	6	3	106	69
TOTAL	109	57	845	599	99	135	385	327

FIGURE 5. TRANSFERS TO LEVEL 5 AND LEVEL 4



INSTITUTION POPULATION TREND (PREVIOUS YEAR COMPARISON)					
		7/1/2007	7/1/2006	DIFFERENCE	
ACI	(Allen Correctional Institution)	1,348	1326	22	1.7%
BCI	(Belmont Correctional Institution)	2,659	2507	152	6.1%
CCI	(Chillicothe Correctional Institution)	2,901	2861	40	1.4%
CMC MALE	(Correctional Medical Center)	119	112	7	6.3%
CRC	(Correctional Reception Center)	1,863	1860	3	0.2%
DCI	(Dayton Correctional Institution)	464	413	51	12.3%
GCI	(Grafton Correctional Institution)	1,435	1433	2	0.1%
HCI	(Hocking Correctional Institution)	475	468	7	1.5%
LaECI	(Lake Erie Correctional Institution)	1,457	1476	-19	-1.3%
LECI	(Lebanon Correctional Institution)	2,253	2232	21	0.9%
LOCI	(London Correctional Institution)	2,153	2189	-36	-1.6%
LORCI	(Lorain Correctional Institution)	2,028	1923	105	5.5%
MACI	(Madison Correctional Institution)	2,067	2056	11	0.5%
MANCI	(Mansfield Correctional Institution)	2,407	2260	147	6.5%
MCI	(Marion Correctional Institution)	2,093	1922	171	8.9%
MEPRC	(Montgomery Education & Pre-Release Center)	347	347	0	0.0%
NCCI	(North Central Correctional Institution)	2,313	2275	38	1.7%
NCCTF	(North Coast Correctional Treatment Facility)	602	604	-2	-0.3%
NCI	(Noble Correctional Institution)	2,364	2346	18	0.8%
OCF MALE	(Oakwood Correctional Facility)	121	108	13	12.0%
OSP	(Ohio State Penitentiary)	519	535	-16	-3.0%
PCI	(Pickaway Correctional Institution)	2,363	2043	320	15.7%
RCI	(Ross Correctional Institution)	2,563	2294	269	11.7%
RICI	(Richland Correctional Institution)	2,524	2411	113	4.7%
SCI	(Southeastern Correctional Institution)	1,595	1467	128	8.7%
SOCF	(Southern Ohio Correctional Facility)	1,417	1141	276	24.2%
TCI	(Trumbull Correctional Institution)	956	956	0	0.0%
TOCI	(Toledo Correctional Institution)	1,092	803	289	36.0%
WCI	(Warren Correctional Institution)	1,353	1018	335	32.9%
MALE TOTAL		45,851	43,386	2,465	5.7%

CMC FEMALE	(Correctional Medical Center)	4	5	-1	-20.0%
FPRC	(Franklin Pre-Release Center)	495	482	13	2.7%
NEPRC	(Northeast Pre-Release Center)	577	582	-5	-0.9%
OCF FEMALE	(Oakwood Correctional Facility)	7	3	4	133.3%
ORW	(Ohio Reformatory for Women)	2,369	2023	346	17.1%
TCI FEMALE	(Trumbull Correctional Institution)	388	358	30	8.4%
FEMALE TOTAL		3,840	3,453	387	11.2%
COMBINED MALE / FEMALE TOTAL		49,691	46,839	2,852	6.1%



RELEASES AND RETURNS:

INSTITUTIONAL STATISTICS

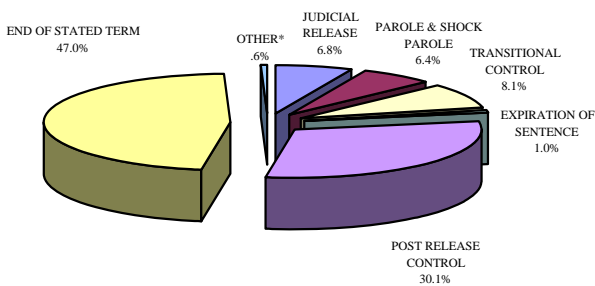
	FY 2007 FEMALE	FY 2007 MALE	FY 2007 TOTAL	FY 2006 TOTAL	FY 2005 TOTAL
RELEASED BY:					
SUSPENDED SENTENCE	1	13	14	18	33
VACATED SENTENCE	2	6	8	6	15
REGULAR PAROLE	49	1,765	1814	2,253	2,987
SHOCK PAROLE	1	0	1	0	2
JUDICIAL RELEASE	408	1,485	1893	1,797	1,732
POST RELEASE CONTROL	964	7,533	8497	7,944	7,307
TRANSITIONAL CONTROL	165	2,122	2287	2,297	2,512
EXPIRATION OF SENTENCE	4	284	288	494	409
END OF STATED TERM	1852	11,417	13269	12,833	12,168
APPEALS BOND	2	16	18	18	25
ESCAPES (from the Office of Prisons)	0	0	0	3	6
DEATHS (from the Bureau of Medical Services)	5	125	130	113	135
TOTAL RELEASED	3453	24,766	28219	27,776	27,331
RETURNED BY:					
PAROLE VIOLATION (TECH.) ¹	14	553	567	622	692
JUDICIAL RELEASE VIOLATION	138	774	912	848	704
POST RELEASE CONTROL VIOLATION ¹	85	1,335	1420	1,598	1,662
TRANSITIONAL CONTROL VIOLATION	33	132	165	245	219
REACTIVATED SUSPENDED SENTENCE	1	7	8	14	28
ESCAPES RETURNED	0	2	2	3	6
APPEALS BOND	1	12	13	14	15
TOTAL RETURNED	272	2,815	3,087	3,344	3,326

¹ Numbers from DOTS. PRC and Parole offenders being held at reception prior to a violation hearing have caused errors in the monthly report totals, so monthly totals are not summed for this report.

PAROLE VIOLATORS RECOMMISSIONED²	20	592	612	733	771
PRC FELONY VIOLATOR²	58	664	722	828	852

² PVR and PRC Felony Violator numbers from DOTS.

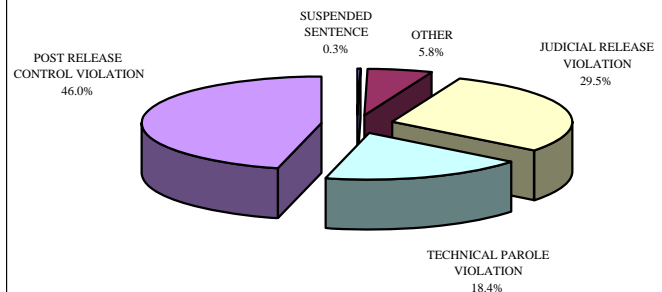
FIGURE 7. RELEASE TYPES FY 2007



*Other includes the following releases: vacated sentence, appeals bond, escapes and deaths.

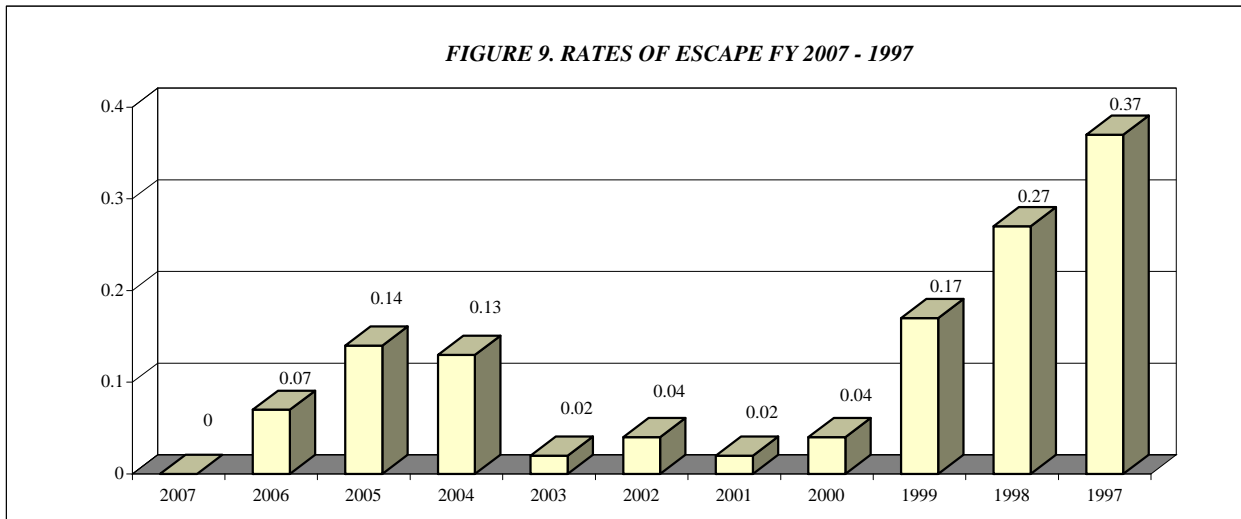
**Includes offenders released on suspended sentence.

FIGURE 8. RETURN TYPES FY 2007



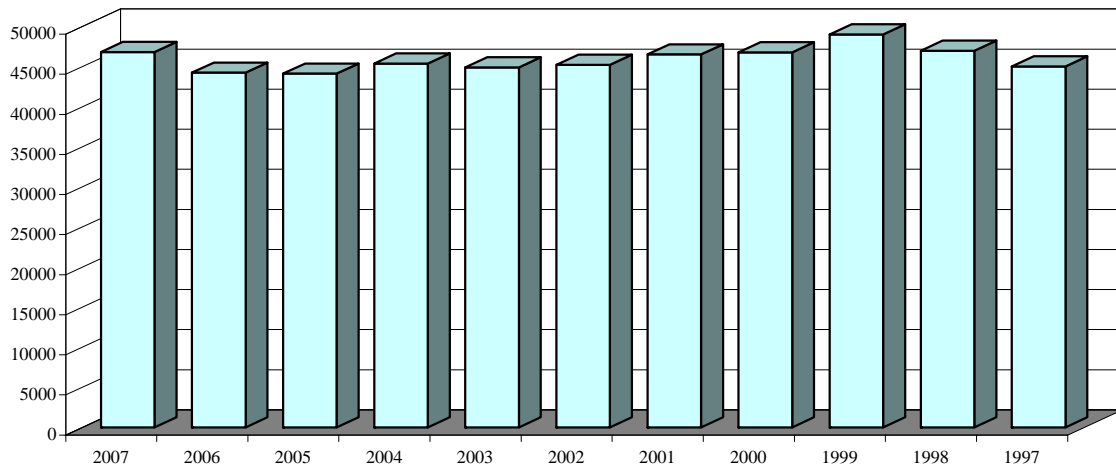
***Other includes returns for the following: transitional control violation, return from appeals bond and captured escapes.

ESCAPES AND RATES OF ESCAPE											
	2007	2006	2005	2004	2003	2002	2001	2000	1999	1998	1997
ACI	0	0	0	0	0	0	0	0	0	2	0
BCI	0	0	0	0	0	0	0	0	0	0	1
CCI	0	0	0	0	0	0	0	0	2	0	0
CMC	0	0	0	0	0	0	0	0	0	0	0
CRC	0	0	0	0	0	0	0	0	0	0	0
DCI	0	0	1	0	0	0	0	0	0	0	0
FPRC	0	0	0	0	0	0	0	0	0	0	0
GCI	0	0	0	0	1	0	1	0	1	1	2
HCI	0	0	0	0	0	0	0	0	0	0	0
LaECI	0	0	0	0	0	0	0	0	0	0	0
LCI	0	0	0	0	0	0	0	0	0	0	0
LECI	0	1	0	0	0	1	0	0	0	0	0
LOCI	0	0	0	0	0	0	0	1	0	2	0
LORCI	0	0	0	0	0	0	0	0	0	0	0
MACI	0	0	0	0	0	0	0	0	1	0	1
MANCI	0	0	1	1	0	0	0	0	1	2	5
MCI	0	0	0	0	0	0	0	0	0	1	1
MEPRC	0	0	1	0	0	0	0	0	0	0	0
NEPRC	0	0	0	0	0	0	0	0	0	0	1
NCCI	0	0	0	0	0	0	0	0	0	0	0
NCCTF	0	0	0	0	0	0	0	0	0	0	0
NCI	0	0	0	0	0	0	0	0	0	0	0
OCF	0	0	0	0	0	0	0	0	0	0	0
OCI	0	0	0	0	0	0	0	0	0	0	0
ORW	0	0	0	0	0	0	0	0	0	0	0
OSP	0	0	1	0	0	0	0	0	0	0	0
PCI	0	2	0	3	0	0	0	1	1	1	2
RCI	0	0	2	1	0	0	0	0	1	2	1
RICI	0	0	0	0	0	0	0	0	0	0	0
SCI	0	0	0	1	0	1	0	0	1	2	2
SOCF	0	0	0	0	0	0	0	0	0	0	0
TCI	0	0	0	0	0	0	0	0	0	0	1
TOCI	0	0	0	0	0	0	0	0	0	0	0
WCI	0	0	0	0	0	0	0	0	0	0	0
TOTAL	0	3	6	6	1	2	1	2	8	13	17
AVG. SYSTEM POPULATION FOR YEAR	48415	45203	44,026	44,527	45,175	44,980	45,609	46,690	47,988	47,899	46,031
RATE OF ESCAPE PER 1000 INMATES	0.00	0.07	0.14	0.13	0.02	0.04	0.02	0.04	0.17	0.27	0.37



END OF THE YEAR INSTITUTIONAL POPULATION TREND FOR JULY 1, 2007 THROUGH JULY 1, 1997											
	2007	2006	2005	2004	2003	2002	2001	2000	1999	1998	1997
ACI	1,326	1,320	1,282	1,227	1,173	1,152	1,328	1,401	1,421	1,375	1,294
BCI	2,507	2,184	2,148	2,120	2,080	2,040	1,901	2,423	2,650	2,355	2,252
CCI	2,861	2,751	2,655	2,579	2,264	2,246	2,195	2,448	2,854	2,628	2,582
CMC MALE	112	98	110	106	101	99	146	132	146	135	153
CMC FEMALE	5	10	4	6	2	5	2	3	5	5	8
CRC	1,860	1,751	1,602	1,916	1,858	1,558	1,733	1,667	2,304	2,155	2,142
DCI	413	410	412	459	474	472	473	474	483	486	485
FPRC	482	484	460	457	468	468	438	459	474	479	490
GCI	1,433	1,405	1,424	1,346	1,334	1,342	1,450	1,593	1,699	1,635	1,621
HCF	468	464	460	447	423	408	417	436	447	433	440
LaECI	1,476	1,378	1,373	1,388	1,369	1,362	999	0	0	0	0
LCI	0	0	0	496	1,566	1,485	1,549	1,650	1,937	1,990	2,125
LECI	2232	1,963	1,952	1,728	1,625	1,680	1,875	2,192	2,307	2,225	2,103
LOCI	2189	2,047	2,054	2,027	2,009	2,069	1,915	1,857	1,946	1,904	2,350
LORCI	1923	1,479	1,298	1,954	1,632	1,443	1,548	1,676	2,116	2,041	1,993
MACI	2056	1,957	2,056	2,110	2,063	2,009	2,093	2,471	2,601	2,483	2,552
MANCI	2260	2,378	2,353	2,373	2,276	2,109	2,319	2,671	2,696	2,655	2,588
MCI	1922	1,787	1,663	1,712	1,705	1,837	1,782	1,911	2,222	2,144	2,087
MEPRC	347	345	319	328	327	262	328	322	347	331	349
NEPRC	582	532	577	600	631	495	590	583	634	638	631
NCCI	2275	2,303	2,240	2,199	2,080	1,955	2,145	2,280	2,312	2,226	2,252
NCCTF	604	546	530	533	567	554	549	0	0	0	0
NCI	2346	2,103	2,149	1,964	1,854	1,850	2,014	2,054	2,397	2,128	0
OCF MALE	108	119	114	131	165	175	130	156	141	150	145
OCF FEMALE	3	3	1	0	8	5	8	9	5	0	0
OCI	0	0	0	0	0	1,743	1,920	1,935	2,038	2,056	2,242
ORW	2,023	1,857	1,969	1,827	1,765	1,726	1,807	1,802	1,780	1,716	1,673
ORW MALES	0	0	0	0	0	0	0	0	0	0	0
OSP	535	466	460	505	508	558	610	616	285	0	0
PCI	2043	1,960	2,152	2,251	2,057	1,815	1,903	1,920	1,959	1,950	1,956
RCI	2294	2,261	2,228	2,333	2,114	2,224	2,359	2,508	2,751	2,771	2,731
RICI	2411	2,291	2,273	2,238	2,271	2,043	2,183	1,238	0	0	0
SCI	1467	1,583	1,636	1,563	1,434	1,332	1,718	1,677	1,769	1,743	1,755
SOCF	1141	984	978	1,230	1,399	1,438	1,409	1,436	1,481	1,410	1,176
TCI MALE	956	963	1,365	1,396	1,429	1,395	1,411	1,429	1,457	1,442	1,389
TCI FEMALE	358	254	0	0	0	0	0	0	0	0	0
TOCI	803	787	789	797	766	696	0	0	0	0	0
WCI	1,018	1,047	1,048	1,056	1,120	1,194	1,290	1,377	1,365	1,306	1,472
TOTAL	46,839	44,270	44,134	45,402	44,917	45,244	46,537	46,806	49,029	46,995	45,036

FIGURE 10. INSTITUTION POPULATION TREND FY 2007-1997



END OF THE YEAR INSTITUTIONAL POPULATION TREND FOR JULY 1, 1994 THROUGH JULY 1, 1986

	1996	1995	1994	1993	1992	1991	1990	1989	1988	1987	1986
ACI	1294	1404	1,417	1,171	1,111	979	917	753	644	59	0
BCI	2252	283									
CCI	2582	2620	2,791	2,794	2,625	2,456	2,325	2,064	1,864	2,975	2,935
CLEV. P.R.	0	0	0	0	0	0	0	0	49	41	0
CMC MALE	153	147	148	0	0	0	0	0	0	0	0
CMC FEMALE	8	5	0	0	0	0	0	0	0	0	0
CRC	2142	2240	2,182	2,331	2,198	2,009	1,683	1,534	1,005	0	0
DCI	485	484	481	493	480	468	467	480	456	464	0
FPRC	490	471	456	428	364	356	344	322	0	0	0
GCI	1621	1575	1,620	1,317	1,307	1,121	1,054	793	0	0	0
HCI/HCF	440	435	449	441	397	405	328	317	322	323	323
LaECI	0	0	0	0	0	0	0	0	0	0	0
LCI	2125	1926	1,897	1,974	1,923	1,878	1,840	1,702	1,611	1,721	1,704
LECI	2103	2188	2,202	2,192	1,911	1,942	1,937	1,939	1,868	1,851	2,095
LOCI	2350	2311	2,366	2,426	2,459	2,281	2,172	2,086	1,864	2,211	2,178
LORCI	1993	2071	2,337	2,313	2,163	1,886	1,520	0	0	0	0
MACI	2552	2589	2,599	2,111	2,088	1,898	1,705	1,416	1,313	68	0
MANCI	2588	2230	2,380	2,542	2,306	1,830	0	0	0	0	0
MCI	2087	2224	2,284	2,210	1,789	1,788	1,951	1,951	1,964	2,162	2,121
MEPRC	349	342	208	0	0	0	0	0	0	0	0
NEPRC	631	655	638	651	530	380	458	368	33	0	0
NCCI	2252	2262	0	0	0	0	0	0	0	0	0
NCCTF	0	0	0	0	0	0	0	0	0	0	0
NCI	0	0	0	0	0	0	0	0	0	0	0
OCF MALE	145	211	48	0	0	0	0	0	0	0	0
OCF FEMALE	0	0	0	0	0	0	0	0	0	0	0
OCI	2242	2430	2,396	2,285	2,266	2,169	2,146	1,820	1,625	2,071	1,903
ORW	1673	1531	1,418	1,374	1,458	1,334	1,261	1,375	1,261	1,193	919
ORW MALES	0	190	249	241	0	0	0	0	0	0	0
OSP	0	0	0	0	0	0	1,128	2,359	2,339	2,738	2,680
PCI	1956	1906	1,890	2,028	1,972	1,542	1,712	1,420	1,393	1,242	1,250
RCI	2731	2828	2,834	2,687	2,506	2,278	2,108	1,688	1,475	313	0
RICI	0	0	0	0	0	0	0	0	0	0	0
SCI/SOTC	1755	1797	1,801	1,912	1,999	1,477	1,517	1,436	1,468	1,445	1,137
SOCF	1176	1009	1,160	1,073	1,832	1,552	2,202	2,107	2,106	2,412	2,376
TCI	1389	1272	955	940	0	0	0	0	0	0	0
TCI FEMALE	0	0	0	0	0	0	0	0	0	0	0
TOCI	0	0	0	0	0	0	0	0	0	0	0
WCI	1472	1522	1,578	1,462	1,432	1,324	1,087	146	90	0	0
TOTAL	45,036	43,158	40,784	39,396	37,116	33,353	31,862	28,076	24,750	23,289	21,621

FIGURE 11: INSTITUTION POPULATION TREND 1996-1986

