



Ohio Department of Rehabilitation and Correction

1050 Freeway Drive North
Columbus, Ohio 43229

Bob Taft, Governor

www.drc.state.oh.us

Reginald A. Wilkinson, Director

TO: ALL CONCERNED
FROM: CORETTA PETTWAY & SENARATH DASSANAYAKA, RESEARCHERS
 BUREAU OF RESEARCH
 OFFICE OF POLICY
DATE: 1/13/2003
SUBJECT: CALENDAR YEAR 2001 SUMMARY OF INSTITUTION STATISTICS

TOTAL COURT COMMITMENTS TO THE OHIO DEPARTMENT OF REHABILITATION AND CORRECTION:

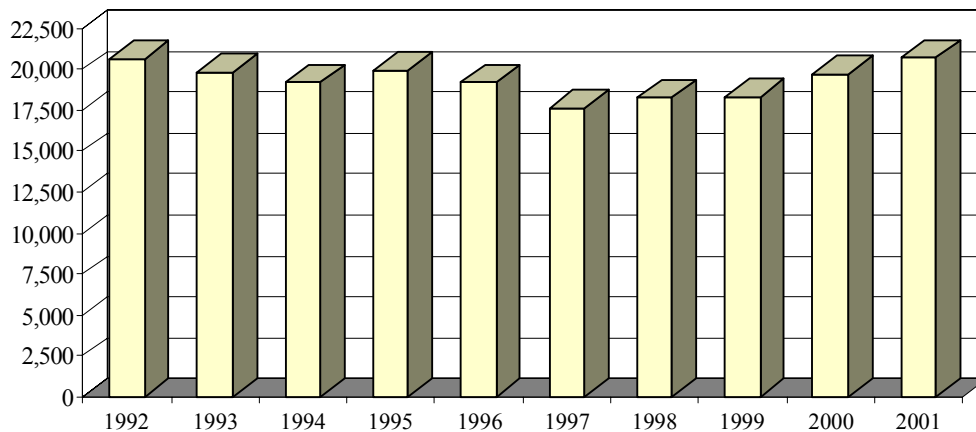
OFFICIAL COMMITMENT TOTALS			
CRC RECEPTION - MALE	9,367	MALE INTAKE	18,225
LORCI RECEPTION - MALE	8,445	FEMALE INTAKE	2,444
ORW RECEPTION - FEMALE	2,444	TOTAL	20,669
RECEIVED AT OTHER INSTITUTIONS	413		
TOTAL	20,669		

SENATE BILL 2 COMMITMENTS*		
	MOST SERIOUS OFFENSE IS A SENATE BILL 2 OFFENSE	MOST SERIOUS OFFENSE IS A PRE-SENATE BILL 2 OFFENSE
MALE INTAKE	17,839	386
FEMALE INTAKE	2,351	93
TOTAL	20,190	479

* THESE TOTALS ARE INCLUDED IN THE OFFICIAL COMMITMENT TOTALS.

COURT COMMITMENTS TO THE DEPARTMENT CY 1992-2001									
1992	1993	1994	1995	1996	1997	1998	1999	2000	2001
20,594	19,834	19,198	19,915	19,184	17,600	18,252	18,325	19,721	20,669

FIGURE 1. COURT COMMITMENTS TO THE DEPARTMENT CY 1992-2001



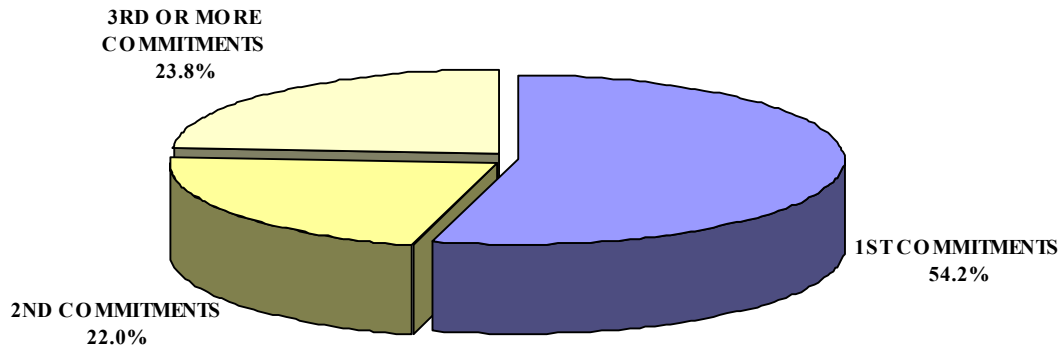
NUMBER OF COMMITMENTS TO THE DEPARTMENT								
CY 2001*	CRC MALE	LORCI MALE	MALE N	MALE %	ORW FEMALE	FEMALE %	TOTAL N	TOTAL %
1ST COMMITMENTS	5,344	4,297	9,641	52.9%	1,569	64.2%	11,210	54.2%
2ND COMMITMENTS	2,035	2,065	4,100	22.5%	438	17.9%	4,538	22.0%
3 OR MORE COMMITMENTS	2,099	2,385	4,484	24.6%	437	17.9%	4,921	23.8%
TOTAL	9,478	8,747	18,225	100.0%	2,444	100.0%	20,669	100.0%

NUMBER OF COMMITMENTS TO THE DEPARTMENT								
CY 2000*	CRC MALE	LORCI MALE	MALE N	MALE %	ORW FEMALE	FEMALE %	TOTAL N	TOTAL %
1ST COMMITMENTS	5,197	4,334	9,531	55.0%	1,535	64.3%	11,066	56.1%
2ND COMMITMENTS	2,018	1,890	3,908	22.5%	425	17.8%	4,333	22.0%
3 OR MORE COMMITMENTS	1,933	1,962	3,895	22.5%	427	17.9%	4,322	21.9%
TOTAL	9,148	8,186	17,334	100.0%	2,387	100.0%	19,721	100.0%

NUMBER OF COMMITMENTS TO THE DEPARTMENT								
*CY 1999	CRC MALE	LORCI MALE	MALE N	MALE %	ORW FEMALE	FEMALE %	TOTAL N	TOTAL %
1ST COMMITMENTS	5,099	4,172	9,271	57.5%	1,451	65.9%	10,722	58.5%
2ND COMMITMENTS	1,756	1,751	3,507	21.8%	375	17.0%	3,882	21.2%
3 OR MORE COMMITMENTS	1,631	1,713	3,344	20.7%	377	17.1%	3,721	20.3%
TOTAL	8,486	7,636	16,122	100.0%	2,203	100.0%	18,325	100.0%

* THIS TABLE IS PRODUCED FROM A DOTS SUMMARY OF PRIOR OHIO COMMITMENTS.

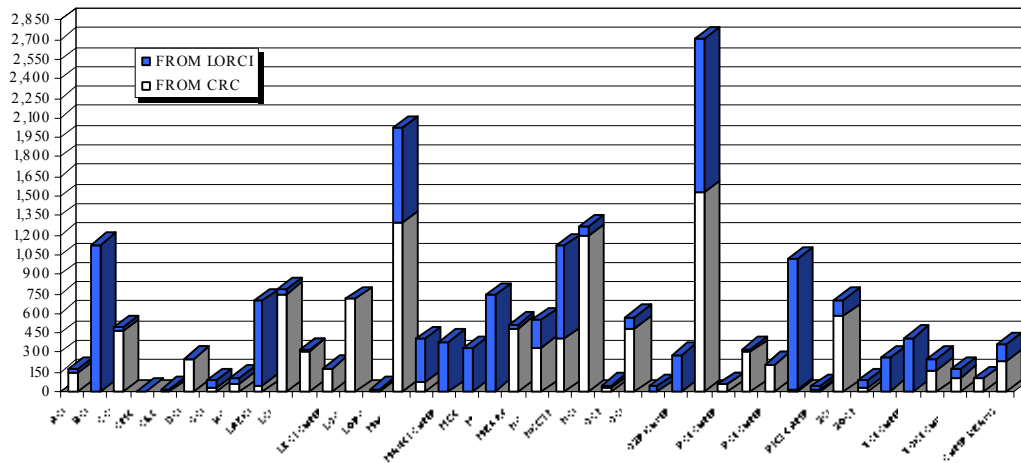
FIGURE 2. DISTRIBUTION OF COURT COMMITMENTS CY 2001



INMATE TRANSFERS FROM MALE RECEPTION CENTERS

	FROM CRC RECEPTION TO:				FROM LORCI RECEPTION TO:			
	2001	2000	1999	1998	2001	2000	1999	1998
ACI	147	114	277	142	29	8	49	153
BCI	2	1	2	0	1,122	945	1,426	1,421
CCI	465	419	301	591	24	8	12	8
CMC	3	9	6	10	3	8	3	3
CRC	0	0	0	0	18	24	24	55
DCI	252	222	211	215	0	0	0	0
GCI	22	8	16	14	65	29	72	148
HCI	63	38	62	139	46	59	79	49
LAECI	48	0	0	0	653	884	0	0
LCI	748	622	393	279	37	69	58	320
LECI	313	326	497	408	7	18	9	0
LECI CAMP	181	0	0	0	0	0	0	0
LOCI	708	736	761	438	3	9	35	188
LORCI	12	12	47	23	6	56	0	10
MACI	1,298	1,076	1,202	1,268	722	778	847	858
MANCI	71	6	11	31	334	167	487	409
MANCI CAMP	1	0	0	0	385	283	73	240
MCC	0	1	1	0	330	380	268	331
MCI	7	2	1	6	736	541	610	338
MEPRC	485	476	513	591	32	30	0	0
NCCI	342	217	237	149	206	98	202	154
NCCTF	405	512	0	0	718	538	0	0
NCI	1,191	1,129	1,041	1,777	73	300	1	10
OCF	27	25	26	14	21	19	18	23
OCI	484	683	654	448	89	111	70	143
OSP	0	23	0	0	42	51	0	0
OSP CAMP	0	0	21	0	280	283	294	270
PCI	1,523	1,497	1,328	1,223	1,179	873	811	590
PCI CAMP	51	7	0	0	0	0	0	0
RCI	304	432	491	631	23	10	104	20
RCI CAMP	211	103	21	0	0	0	0	0
RICI	16	12	0	0	1,001	1,040	1,404	0
RICI CAMP	11	11	0	0	27	126	184	430
SCI	580	618	708	413	124	133	366	263
SOCF	24	63	69	30	64	16	56	65
TCI	4	0	2	2	257	152	520	303
TCI CAMP	0	38	0	0	411	536	201	382
TOCI	167	83	0	0	84	0	0	0
TOCI CAMP	106	0	0	0	66	0	0	0
WCI	95	77	109	153	4	16	4	18
CAMP REAMS	233	154	223	0	132	158	104	456
TOTAL	10,600	9,752	9,231	8,995	9,353	8,756	8,391	7,658

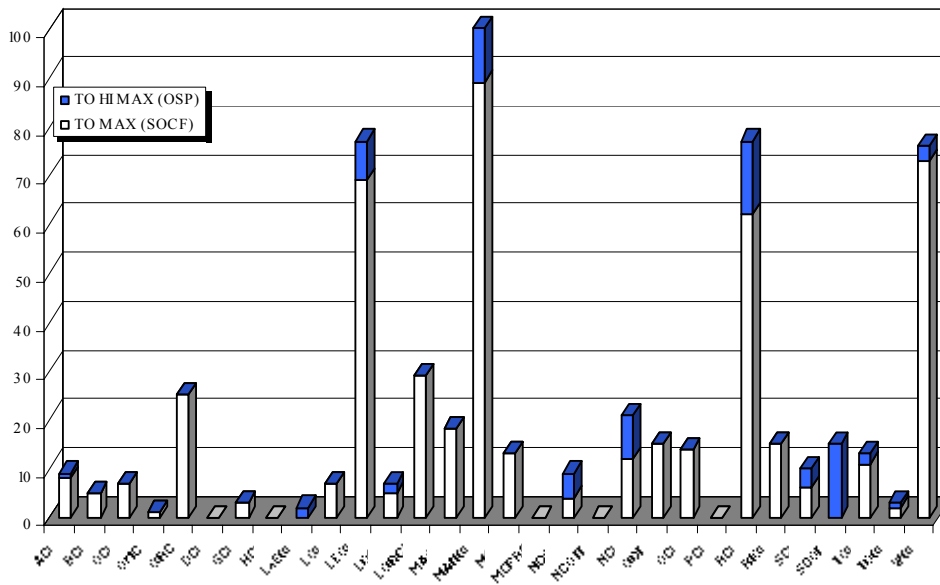
FIGURE 3. INMATES RECEIVED FROM CRC AND LORCI CY2001



DISCIPLINARY AND ADMINISTRATIVE TRANSFERS

	FROM LESSER CUSTODY TO:				FROM HIGHER TO LESSER CUSTODY				
	HI MAX (OSP)		MAXIMUM (SOCF)		HI MAX (OSP)		MAXIMUM (SOCF)		
	2001	2000	2001	2000	2001	2000	2001	2000	1999
ACI	1	1	8	4	0	0	0	0	1
BCI	0	3	5	4	0	0	0	0	0
CCI	0	1	7	12	0	0	0	0	2
CMC	0	0	1	1	1	0	3	1	0
CRC	0	3	25	60	3	0	8	1	0
DCI	0	0	0	0	0	0	0	0	0
GCI	0	0	3	0	0	0	0	0	0
HCI	0	0	0	0	0	0	1	0	4
LaECI	2	0	0	0	0	0	1	0	0
LCI	0	1	7	2	0	0	0	0	0
LECI	8	10	69	94	8	2	77	106	75
LOCI	2	0	5	1	0	0	0	0	4
LORCI	0	1	29	17	0	0	2	0	0
MACI	0	0	18	26	0	0	0	4	13
MANCI	11	18	89	68	5	3	64	45	77
MCI	0	5	13	17	0	1	7	3	4
MEPRC	0	0	0	0	0	0	0	0	0
NCCI	5	0	4	3	0	1	0	0	0
NCCTF	0	0	0	0	0	0	0	0	0
NCI	9	0	12	1	2	0	4	0	36
OCF	0	0	15	18	0	0	20	19	30
OCI	0	6	14	11	0	0	0	0	0
PCI	0	1	0	3	0	0	0	0	0
RCI	15	6	62	30	0	0	219	181	25
RICI	0	1	15	10	0	1	0	0	0
SCI	4	0	6	7	2	0	2	3	1
SOCF	15	24	0	0	144	108	0	0	0
TCI	2	0	11	10	0	1	31	30	90
TOCI	1	0	2	0	0	0	6	0	0
WCI	3	7	73	56	2	2	70	105	61
TOTAL	78	88	493	455	167	119	515	498	423

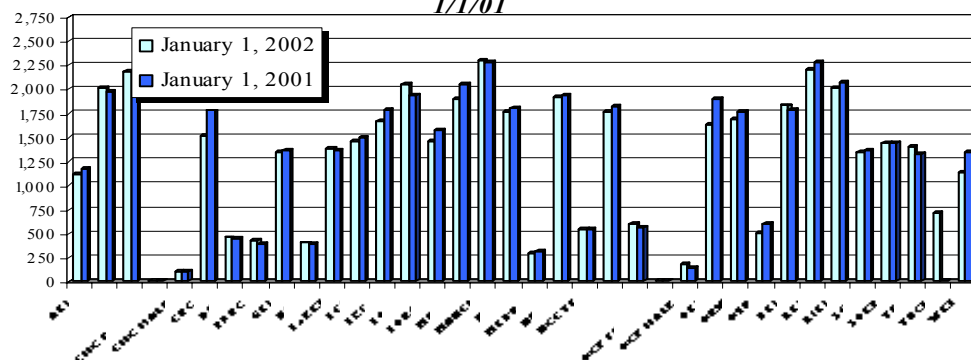
FIGURE 4. TRANSFERS TO HIGH MAX AND MAXIMUM CUSTODY IN CY2001



END OF CALENDAR YEAR INSTITUTIONAL POPULATION COUNT:

INSTITUTION POPULATION TREND (PREVIOUS YEAR COMPARISON)					
		1/1/2002	1/1/2001	DIFFERENCE	
ACI	(Allen Correctional Institution)	1,122	1,175	-53	-4.5%
BCI	(Belmont Correctional Institution)	2,017	1,981	36	1.8%
CCI	(Chillicothe Correctional Institution)	2,187	2,192	-5	-0.2%
CMC MALE	(Correctional Medical Center)	99	101	-2	-2.0%
CRC	(Correctional Reception Center)	1,513	1,777	-264	-14.9%
DCI	(Dayton Correctional Institution)	456	445	11	2.5%
GCI	(Grafton Correctional Institution)	1,354	1,358	-4	-0.3%
HCI	(Hocking Correctional Institution)	400	396	4	1.0%
LaECI	(Lake Erie Correctional Institution)	1,382	1,369	13	0.9%
LCI	(Lima Correctional Institution)	1,467	1,500	-33	-2.2%
LECI	(Lebanon Correctional Institution)	1,666	1,778	-112	-6.3%
LOCI	(London Correctional Institution)	2,057	1,947	110	5.6%
LORCI	(Lorain Correctional Institution)	1,467	1,568	-101	-6.4%
MACI	(Madison Correctional Institution)	1,899	2,060	-161	-7.8%
MANCI	(Mansfield Correctional Institution)	2,308	2,286	22	1.0%
MCI	(Marion Correctional Institution)	1,763	1,803	-40	-2.2%
MEPRC	(Montgomery Education & Pre-Release Center)	292	305	-13	-4.3%
NCCI	(North Central Correctional Institution)	1,916	1,938	-22	-1.1%
NCCTF	(North Coast Correctional Treatment Facility)	542	549	-7	-1.3%
NCI	(Noble Correctional Institution)	1,763	1,832	-69	-3.8%
OCF MALE	(Oakwood Correctional Facility)	175	144	31	21.5%
OCI	(Orient Correctional Institution)	1,636	1,908	-272	-14.3%
OSP	(Ohio State Penitentiary)	512	593	-81	-13.7%
PCI	(Pickaway Correctional Institution)	1,834	1,785	49	2.7%
RCI	(Ross Correctional Institution)	2,202	2,289	-87	-3.8%
RICI	(Richland Correctional Institution)	2,016	2,073	-57	-2.7%
SCI	(Southeastern Correctional Institution)	1,352	1,368	-16	-1.2%
SOCF	(Southern Ohio Correctional Facility)	1,449	1,435	14	1.0%
TCI	(Trumbull Correctional Institution)	1,408	1,327	81	6.1%
TOCI	(Toledo Correctional Institution)	718	222	496	223.4%
WCI	(Warren Correctional Institution)	1,144	1,258	-114	-9.1%
MALE TOTAL		42,116	42,762	-646	-1.5%
CMC FEMALE	(Correctional Medical Center)	4	2	2	100.0%
FPRC	(Franklin Pre-Release Center)	436	394	42	10.7%
NEPRC	(Northeast Pre-Release Center)	606	569	37	6.5%
OCF FEMALE	(Oakwood Correctional Facility)	10	4	6	150.0%
ORW	(Ohio Reformatory for Women)	1,696	1,774	-78	-4.4%
FEMALE TOTAL		2,752	2,743	9	0.3%
COMBINED MALE / FEMALE TOTAL		44,868	45,505	-637	-1.4%

FIGURE 5. COMPARISON OF INSTITUTION POPULATION COUNT ON 1/1/02 and 1/1/01

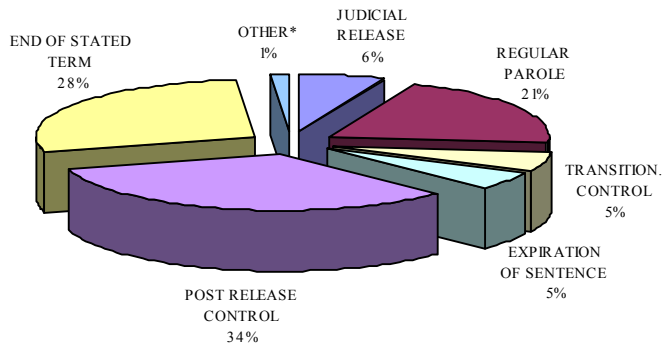


RELEASES AND RETURNS:

<u>INSTITUTIONAL STATISTICS</u>					
	CY 2001 FEMALE	CY 2001 MALE	CY 2001 TOTAL	CY 2000 TOTAL	CY 1999 TOTAL
<u>RELEASED BY:</u>					
SUSPENDED SENTENCE	16	114	130	201	364
VACATED SENTENCE	2	20	22	31	28
REGULAR PAROLE	147	5,250	5,397	5,642	6,069
SHOCK PAROLE	5	10	15	56	81
JUDICIAL RELEASE	325	1,309	1,634	1,656	1,481
POST RELEASE CONTROL	598	8,157	8,755	7,342	5,688
TRANSITIONAL CONTROL	182	1,136	1,318	1,078	1,004
EXPIRATION OF SENTENCE	80	1,240	1,320	1,357	2,701
END OF STATED TERM	1,134	6,080	7,214	6,864	5,682
APPEALS BOND	12	25	37	22	40
ESCAPES (numbers provided by the Office of Prisons)	0	3	3	2	6
DEATHS (numbers provided by the Bureau of Medical Services)	5	114	119	123	128
TOTAL RELEASED	2,506	23,458	25,964	24,374	23,272

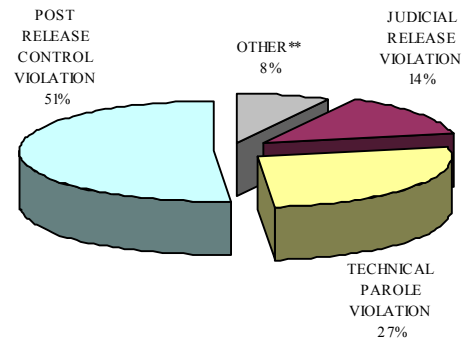
<u>RETURNED BY:</u>					
PAROLE VIOLATION (TECH.)	49	1,097	1,146	2,388	2,108
JUDICIAL RELEASE VIOLATION	79	518	597	611	411
POST RELEASE CONTROL VIOLATION	86	2,101	2,187	1,347	945
TRANSITIONAL CONTROL VIOLATION	25	177	202	69	91
REACTIVATED SUSPENDED SENTENCE	11	100	111	182	393
ESCAPES RETURNED	0	3	3	2	6
APPEALS BOND	4	13	17	13	16
TOTAL RETURNED	254	4,009	4,263	4,612	3,970

FIGURE 6. RELEASE TYPES CY 2001



*Other includes the following releases: suspended sentence, shock parole, appeals bond, escapes and deaths.

FIGURE 7. RETURN TYPES CY 2001



**Other includes returns for the following: transitional control violation, reactivated suspended sentence, return from appeals bond and captured escapes.

ESCAPES AND RATES OF ESCAPE									
	2001	2000	1999	1998	1997	1996	1995	1994	1993
ACI	0	0	0	0	0	0	0	0	0
BCI	0	0	0	0	0	1	0	0	0
CCI	0	0	2	0	0	0	0	0	1
CMC	0	0	0	0	0	0	0	0	0
CRC	0	0	0	0	0	0	0	0	0
DCI	0	0	0	0	0	0	0	0	0
FPRC	0	0	0	0	0	0	0	0	0
GCI	1	0	0	1	0	2	0	1	2
HCI	0	0	0	0	0	0	0	0	0
LAECI	0	0	0	0	0	0	0	0	0
LCI	0	0	0	0	0	0	0	0	0
LECI	1	0	0	0	0	0	0	0	2
LOCI	0	2	0	0	2	0	2	0	0
LORCI	0	0	0	0	0	0	0	0	0
MACI	0	0	1	0	0	1	2	0	0
MANCI	0	0	1	0	2	3	3	2	0
MCI	0	0	0	0	2	0	1	0	0
MEPRC	0	0	0	0	0	0	1	0	0
NEPRC	0	0	0	0	0	0	0	0	0
NCCI	0	0	0	0	0	1	0	2	2
NCCTF	0	0	0	0	0	0	0	0	0
NCI	0	0	0	0	0	0	0	0	0
OCF	0	0	0	0	0	0	0	0	4
OCI	0	0	0	0	0	0	0	0	0
ORW	0	0	0	0	0	0	0	0	0
OSP	0	0	0	0	0	0	0	0	0
PCI	0	0	1	1	1	2	1	1	0
RCI	0	0	0	1	0	1	2	0	2
RICI	0	0	0	0	0	0	0	0	0
SCI	1	0	1	1	1	1	0	2	0
SOCF	0	0	0	0	0	0	2	0	0
TCI	0	0	0	0	0	1	0	0	0
TOCI	0	0	0	0	0	0	0	0	0
WCI	0	0	0	0	0	0	0	0	0
TOTAL	3	2	6	4	8	13	14	8	13
AVG. SYSTEM POPULATION FOR YEAR	45,196	46,196	47,039	48,581	46,965	45,109	43,283	41,012	39,305
RATE OF ESCAPE PER 1000 INMATES	0.07	0.04	0.13	0.08	0.17	0.29	0.32	0.20	0.33

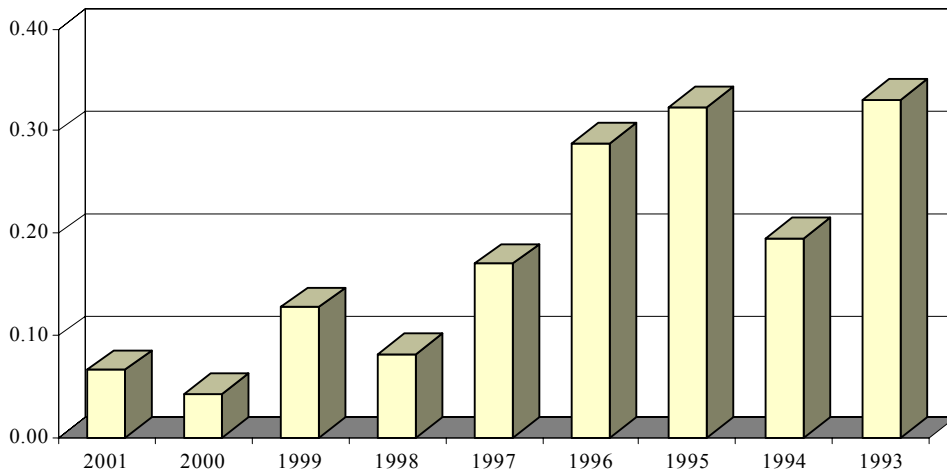
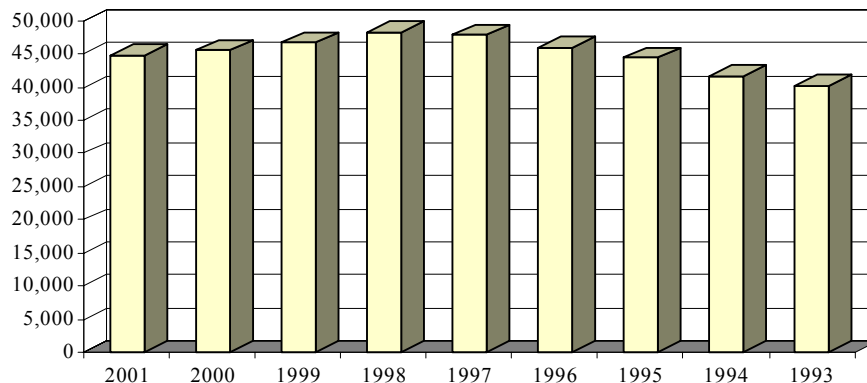


FIGURE 8. RATES OF ESCAPE CY 2001-1993

INSTITUTION POPULATION TRENDS:

END OF THE YEAR INSTITUTIONAL POPULATION TREND FOR 12/31/01 THROUGH 12/31/93									
	2001	2000	1999	1998	1997	1996	1995	1994	1993
ACI	1,122	1,175	1,406	1,397	1,381	1,336	1,415	1,481	1,355
BCI	2,017	1,981	2,427	2,533	2,433	2,283	1,891	224	0
CCI	2,187	2,192	2,244	2,731	2,714	2,580	2,621	2,780	2,821
CMC MALE	99	101	151	140	150	149	154	150	139
CMC FEMALE	4	2	2	4	4	6	4	6	7
CRC	1,513	1,777	1,840	1,982	2,267	1,971	2,074	2,204	2,318
DCI	456	445	460	467	489	485	484	478	484
FPRC	436	394	407	453	475	489	500	435	429
GCI	1,354	1,358	1,601	1,587	1,658	1,622	1,590	1,596	1,435
HCI/HCF	400	396	438	441	446	432	436	417	446
LaECI	1,382	1,369	0	0	0	0	0	0	0
LCI	1,467	1,500	1,530	1,907	2,009	2,082	2,110	2,051	1,954
LECI	1,666	1,778	1,976	2,221	2,273	2,105	2,198	2,139	2,196
LOCI	2,057	1,947	1,885	1,901	1,877	1,896	2,366	2,335	2,400
LORCI	1,467	1,568	1,606	2,053	2,062	2,003	1,863	2,327	2,329
MACI	1,899	2,060	2,290	2,613	2,545	2,530	2,311	2,315	2,312
MANCI	2,308	2,286	2,469	2,637	2,669	2,598	2,637	2,320	2,455
MCI	1,763	1,803	1,918	2,206	2,111	2,109	2,093	2,207	2,307
MEPRC	292	305	306	340	347	324	349	337	0
NCCI	1,916	1,938	2,258	2,314	2,316	2,216	2,274	724	0
NCCTF	542	549	0	0	0	0	0	0	0
NCI	1,763	1,832	1,854	2,344	2,377	1,452	0	0	0
NEPRC	606	569	546	592	643	633	645	613	659
OCF MALE	175	144	6	7	7	9	0	0	0
OCF FEMALE	10	4	158	173	168	162	229	97	0
OCI	1,636	1,908	1,917	2,000	2,039	2,139	2,245	2,340	2,280
ORW	1,696	1,774	1,845	1,830	1,682	1,642	1,594	1,490	1,443
ORW MALES	0	0	0	0	0	0	0	209	249
OSP	512	593	643	492	0	0	0	0	0
PCI	1,834	1,785	1,883	1,940	1,920	1,919	1,923	1,942	1,942
RCI	2,202	2,289	2,398	2,805	2,797	2,767	2,618	2,813	2,892
RICI	2,016	2,073	2,267	102	0	0	0	0	0
SCI	1,352	1,368	1,679	1,726	1,742	1,819	1,751	2,044	1,905
SOCF	1,449	1,435	1,456	1,425	1,425	1,304	1,076	1,060	1,093
TCI	1,408	1,327	1,409	1,447	1,446	1,424	1,375	973	948
TOCI	718	222	0	0	0	0	0	0	0
WCI	1,144	1,258	1,344	1,361	1,336	1,476	1,512	1,502	1,455
TOTAL	44,868	45,505	46,619	48,171	47,808	45,962	44,338	41,609	40,253

FIGURE 9. INSTITUTION POPULATION TREND CY 2001-1993



END OF THE YEAR INSTITUTIONAL POPULATION TREND FOR 12/31/92 THROUGH 12/31/84									
	1992	1991	1990	1989	1988	1987	1986	1985	1984
ACI	1,105	1,007	975	885	712	635	0	0	0
BCI	0	0	0	0	0	0	0	0	0
CCI	2,802	2,634	2,460	2,217	1,976	1,886	2,924	2,525	2,223
CLEV. P.R.	0	0	0	0	0	43	0	0	0
CRC	2,207	2,223	1,423	1,540	1,333	873	0	0	0
DCI	485	481	454	469	473	435	0	0	0
EDP	0	0	343	385	193	0	0	0	0
FPRC	364	354	1,012	925	167	0	0	0	0
GCI	1,289	1,161	0	0	0	0	0	0	255
HCI/HCF	395	392	396	321	327	319	325	318	317
LCI	1,902	1,909	1,848	1,726	1,719	1,546	1,732	1,695	1,472
LECI	2,188	1,939	1,948	1,935	1,861	1,871	2,223	2,048	1,917
LOCI	2,394	2,447	1,484	0	0	0	0	0	0
LORCI	2,175	1,905	2,250	2,173	1,829	1,987	2,246	2,146	2,151
MACI	2,069	1,942	1,696	1,697	1,360	820	0	0	0
MANCI	2,341	2,119	1,411	0	0	0	0	0	0
MCI	2,104	1,856	1,775	1,937	1,941	1,961	2,145	1,962	1,931
NEPRC	611	491	340	413	173	0	0	0	0
OCI	2,257	2,266	2,135	2,053	1,709	1,578	2,141	1,533	1,231
ORW	1,389	1,412	1,213	1,569	1,280	1,183	1,153	853	771
OSR	0	0	0	2,131	2,188	2,317	2,697	2,673	2,098
PCI	1,912	1,792	1,536	1,518	1,265	1,575	1,017	1,215	872
RCI	2,646	2,372	2,222	1,920	1,584	1,305	0	0	0
SCI/SOTC	2,018	1,705	1,533	1,466	1,528	1,453	1,185	1,157	881
SOCF	1,831	1,637	1,829	2,133	2,101	2,156	2,387	2,414	2,232
TCI	83	0	0	0	0	0	0	0	0
WCI	1,424	1,402	1,218	887	142	0	0	0	0
TOTAL	37,991	35,446	31,501	30,300	25,861	23,943	22,175	20,539	18,351

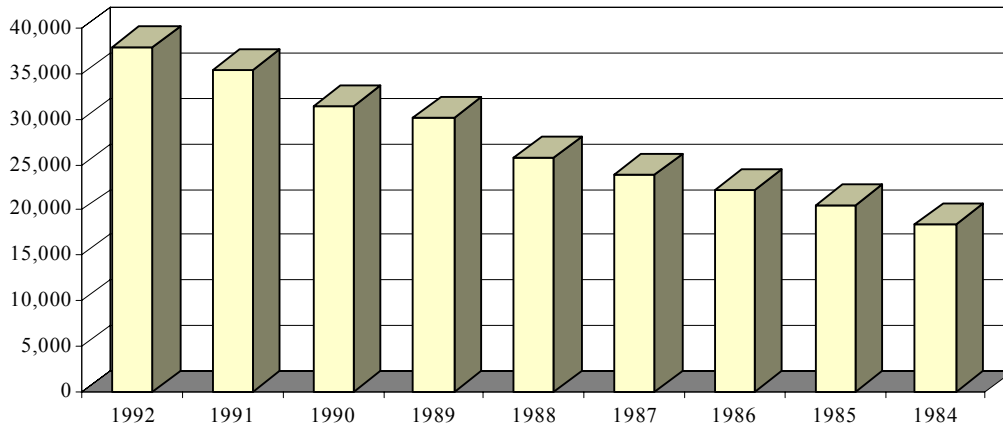


FIGURE 10. INSTITUTION POPULATION TREND 1992-1984