

**OHIO DEPARTMENT OF REHABILITATION AND CORRECTION
FISCAL YEAR 1996 COMMITMENT REPORT**

**COMMITMENTS TO THE DEPARTMENT BY COUNTY AND RECEPTION CENTER
FISCAL YEAR 1996
7/1/95 - 6/30/96**

COUNTY	CRC MALE		LORCI MALE		TOTAL MALE		ORW FEMALE		DEPT.	TOTAL %
	#	%	#	%	#	%	#	%	TOTAL	OF INTAKE
ADAMS	17	0.19%	0	0.00%	17	0.10%	1	0.04%	18	0.09%
ALLEN	138	1.52%	0	0.00%	138	0.81%	25	0.99%	163	0.83%
ASHLAND	0	0.00%	41	0.52%	41	0.24%	6	0.24%	47	0.24%
ASHTABULA	1	0.01%	91	1.15%	92	0.54%	11	0.44%	103	0.53%
ATHENS	48	0.53%	0	0.00%	48	0.28%	8	0.32%	56	0.29%
AUGLAIZE	75	0.82%	0	0.00%	75	0.44%	14	0.56%	89	0.46%
BELMONT	46	0.51%	0	0.00%	46	0.27%	6	0.24%	52	0.27%
BROWN	14	0.15%	0	0.00%	14	0.08%	2	0.08%	16	0.08%
BUTLER	344	3.78%	0	0.00%	344	2.02%	37	1.47%	381	1.95%
CARROLL	1	0.01%	14	0.18%	15	0.09%	0	0.00%	15	0.08%
CHAMPAIGN	35	0.38%	0	0.00%	35	0.21%	3	0.12%	38	0.19%
CLARK	244	2.68%	0	0.00%	244	1.43%	35	1.39%	279	1.43%
CLERMONT	123	1.35%	0	0.00%	123	0.72%	17	0.68%	140	0.72%
CLINTON	65	0.71%	0	0.00%	65	0.38%	8	0.32%	73	0.37%
COLUMBIANA	0	0.00%	57	0.72%	57	0.33%	3	0.12%	60	0.31%
COSHOCTON	30	0.33%	1	0.01%	31	0.18%	6	0.24%	37	0.19%
CRAWFORD	0	0.00%	48	0.60%	48	0.28%	3	0.12%	51	0.26%
CUYAHOGA	5	0.05%	4,125	51.98%	4,130	24.24%	653	25.93%	4,783	24.46%
DARKE	34	0.37%	0	0.00%	34	0.20%	2	0.08%	36	0.18%
DEFIANCE	76	0.83%	0	0.00%	76	0.45%	13	0.52%	89	0.46%
DELAWARE	75	0.82%	0	0.00%	75	0.44%	14	0.56%	89	0.46%
ERIE	0	0.00%	112	1.41%	112	0.66%	12	0.48%	124	0.63%
FAIRFIELD	158	1.74%	0	0.00%	158	0.93%	12	0.48%	170	0.87%
FAYETTE	37	0.41%	0	0.00%	37	0.22%	6	0.24%	43	0.22%
FRANKLIN	1,528	16.79%	1	0.01%	1,529	8.97%	221	8.78%	1,750	8.95%
FULTON	26	0.29%	0	0.00%	26	0.15%	4	0.16%	30	0.15%
GALLIA	23	0.25%	0	0.00%	23	0.13%	2	0.08%	25	0.13%
GEAUGA	1	0.01%	30	0.38%	31	0.18%	6	0.24%	37	0.19%
GREENE	205	2.25%	0	0.00%	205	1.20%	40	1.59%	245	1.25%
GUERNSEY	53	0.58%	0	0.00%	53	0.31%	4	0.16%	57	0.29%
HAMILTON	2,215	24.33%	0	0.00%	2,215	13.00%	309	12.27%	2,524	12.91%
HANCOCK	75	0.82%	0	0.00%	75	0.44%	12	0.48%	87	0.44%
HARDIN	24	0.26%	1	0.01%	25	0.15%	2	0.08%	27	0.14%
HARRISON	13	0.14%	1	0.01%	14	0.08%	1	0.04%	15	0.08%
HENRY	27	0.30%	0	0.00%	27	0.16%	7	0.28%	34	0.17%
HIGHLAND	51	0.56%	0	0.00%	51	0.30%	8	0.32%	59	0.30%
HOCKING	11	0.12%	0	0.00%	11	0.06%	1	0.04%	12	0.06%
HOLMES	0	0.00%	28	0.35%	28	0.16%	4	0.16%	32	0.16%
HURON	0	0.00%	58	0.73%	58	0.34%	7	0.28%	65	0.33%
JACKSON	33	0.36%	0	0.00%	33	0.19%	1	0.04%	34	0.17%
JEFFERSON	1	0.01%	62	0.78%	63	0.37%	14	0.56%	77	0.39%
KNOX	52	0.57%	1	0.01%	53	0.31%	3	0.12%	56	0.29%
LAKE	0	0.00%	188	2.37%	188	1.10%	25	0.99%	213	1.09%

COMMITMENTS TO THE DEPARTMENT BY COUNTY AND RECEPTION CENTER
FISCAL YEAR 1996
7/1/95 - 6/30/96

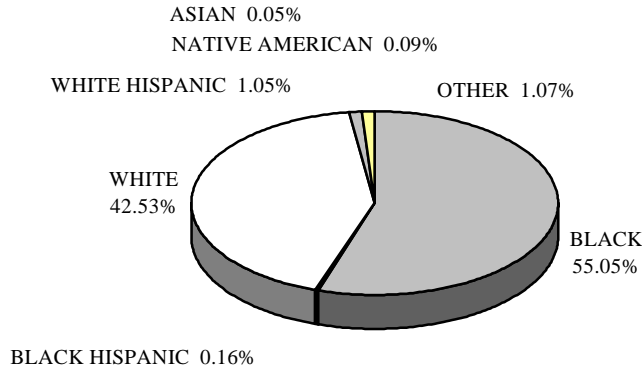
COUNTY	CRC MALE		LORCI MALE		TOTAL MALE		ORW FEMALE		DEPT.	TOTAL %
	#	%	#	%	#	%	#	%	TOTAL	OF INTAKE
LAWRENCE	53	0.58%	0	0.00%	53	0.31%	4	0.16%	57	0.29%
LICKING	180	1.98%	0	0.00%	180	1.06%	28	1.11%	208	1.06%
LOGAN	36	0.40%	0	0.00%	36	0.21%	5	0.20%	41	0.21%
LORAIN	3	0.03%	492	6.20%	495	2.91%	97	3.85%	592	3.03%
LUCAS	738	8.11%	1	0.01%	739	4.34%	108	4.29%	847	4.33%
MADISON	22	0.24%	0	0.00%	22	0.13%	4	0.16%	26	0.13%
MAHONING	1	0.01%	161	2.03%	162	0.95%	23	0.91%	185	0.95%
MARION	110	1.21%	0	0.00%	110	0.65%	15	0.60%	125	0.64%
MEDINA	0	0.00%	99	1.25%	99	0.58%	16	0.64%	115	0.59%
MEIGS	37	0.41%	0	0.00%	37	0.22%	2	0.08%	39	0.20%
MERCER	41	0.45%	0	0.00%	41	0.24%	2	0.08%	43	0.22%
MIAMI	122	1.34%	0	0.00%	122	0.72%	13	0.52%	135	0.69%
MONROE	12	0.13%	0	0.00%	12	0.07%	2	0.08%	14	0.07%
MONTGOMERY	770	8.46%	1	0.01%	771	4.53%	108	4.29%	879	4.49%
MORGAN	19	0.21%	0	0.00%	19	0.11%	3	0.12%	22	0.11%
MORROW	24	0.26%	0	0.00%	24	0.14%	1	0.04%	25	0.13%
MUSKINGUM	99	1.09%	0	0.00%	99	0.58%	22	0.87%	121	0.62%
NOBLE	9	0.10%	1	0.01%	10	0.06%	0	0.00%	10	0.05%
OTTAWA	1	0.01%	13	0.16%	14	0.08%	4	0.16%	18	0.09%
PAULDING	28	0.31%	0	0.00%	28	0.16%	3	0.12%	31	0.16%
PERRY	38	0.42%	0	0.00%	38	0.22%	3	0.12%	41	0.21%
PICKAWAY	75	0.82%	1	0.01%	76	0.45%	23	0.91%	99	0.51%
PIKE	32	0.35%	0	0.00%	32	0.19%	1	0.04%	33	0.17%
PORTAGE	0	0.00%	85	1.07%	85	0.50%	12	0.48%	97	0.50%
PREBLE	25	0.27%	0	0.00%	25	0.15%	0	0.00%	25	0.13%
PUTNAM	20	0.22%	0	0.00%	20	0.12%	9	0.36%	29	0.15%
RICHLAND	1	0.01%	182	2.29%	183	1.07%	38	1.51%	221	1.13%
ROSS	88	0.97%	0	0.00%	88	0.52%	6	0.24%	94	0.48%
SANDUSKY	1	0.01%	63	0.79%	64	0.38%	5	0.20%	69	0.35%
SCIOTO	100	1.10%	0	0.00%	100	0.59%	13	0.52%	113	0.58%
SENECA	2	0.02%	60	0.76%	62	0.36%	6	0.24%	68	0.35%
SHELBY	58	0.64%	0	0.00%	58	0.34%	10	0.40%	68	0.35%
STARK	0	0.00%	518	6.53%	518	3.04%	77	3.06%	595	3.04%
SUMMIT	0	0.00%	1,106	13.94%	1,106	6.49%	197	7.82%	1,303	6.66%
TRUMBULL	1	0.01%	224	2.82%	225	1.32%	28	1.11%	253	1.29%
TUSCARAWAS	47	0.52%	3	0.04%	50	0.29%	4	0.16%	54	0.28%
UNION	42	0.46%	0	0.00%	42	0.25%	2	0.08%	44	0.22%
VAN WERT	35	0.38%	0	0.00%	35	0.21%	3	0.12%	38	0.19%
VINTON	10	0.11%	0	0.00%	10	0.06%	1	0.04%	11	0.06%
WARREN	104	1.14%	0	0.00%	104	0.61%	10	0.40%	114	0.58%
WASHINGTON	56	0.62%	0	0.00%	56	0.33%	6	0.24%	62	0.32%
WAYNE	0	0.00%	65	0.82%	65	0.38%	11	0.44%	76	0.39%
WILLIAMS	49	0.54%	0	0.00%	49	0.29%	8	0.32%	57	0.29%
WOOD	92	1.01%	1	0.01%	93	0.55%	15	0.60%	108	0.55%
WYANDOT	18	0.20%	0	0.00%	18	0.11%	2	0.08%	20	0.10%
TOTAL	9,103	100.00%	7,935	100.00%	#####	100.00%	2,518	100.00%	19,556	100.00%

**COMMITMENTS TO THE DEPARTMENT BY RECEPTION CENTER AND RACE/ETHNICITY
FISCAL YEAR 1996
7/1/95 - 6/30/96**

RACE/ETHNICITY	CRC MALE		LORCI MALE		TOTAL MALE		ORW FEMALE		DEPT. TOTAL	
	#	%	#	%	#	%	#	%	#	%
ASIAN	0	0.00%	7	0.09%	7	0.04%	3	0.12%	10	0.05%
BLACK	4,391	48.24%	4,931	62.14%	9,322	54.71%	1,443	57.31%	10,765	55.05%
BLACK HISPANIC	1	0.01%	30	0.38%	31	0.18%	0	0.00%	31	0.16%
WHITE	4,562	50.12%	2,731	34.42%	7,293	42.80%	1,025	40.71%	8,318	42.53%
WHITE HISPANIC	0	0.00%	161	2.03%	161	0.94%	44	1.75%	205	1.05%
NATIVE AMERICAN	1	0.01%	16	0.20%	17	0.10%	1	0.04%	18	0.09%
OTHER	148	1.63%	59	0.74%	207	1.21%	2	0.08%	209	1.07%
TOTAL	9,103	100.0%	7,935	100.0%	17,038	100.0%	2,518	100.0%	19,556	100.0%

* MOST IN THE 'OTHER' CATEGORY ARE PRESUMED TO BE HISPANIC - RACE NOT SPECIFIED.

FIGURE 1. FY 1996 COMMITMENTS BY RACE/ETHNICITY



**COMMITMENTS TO THE DEPARTMENT BY SENTENCE DEGREE AND RECEPTION CENTER
FISCAL YEAR 1996
7/1/95 - 6/30/96**

SENTENCE DEGREE	CRC MALE		LORCI MALE		TOTAL MALE		ORW FEMALE		DEPT. TOTAL	
	#	%	#	%	#	%	#	%	#	%
DEATH	9	0.10%	7	0.09%	16	0.09%	0	0.00%	16	0.08%
LIFE	99	1.09%	132	1.66%	231	1.36%	22	0.87%	253	1.29%
FIRST	719	7.90%	705	8.88%	1,424	8.36%	101	4.01%	1,525	7.80%
SECOND	1,206	13.25%	1,024	12.90%	2,230	13.09%	224	8.90%	2,454	12.55%
THIRD INDETERMINATE	383	4.21%	485	6.11%	868	5.09%	84	3.34%	952	4.87%
THIRD DETERMINATE	2,526	27.75%	2,308	29.09%	4,834	28.37%	696	27.64%	5,530	28.28%
FOURTH INDETERMINATE	277	3.04%	243	3.06%	520	3.05%	46	1.83%	566	2.89%
FOURTH DETERMINATE	3,872	42.54%	3,019	38.05%	6,891	40.44%	1,343	53.34%	8,234	42.10%
MISDEMEANOR	12	0.13%	12	0.15%	24	0.14%	2	0.08%	26	0.13%
TOTAL	9,103	100.0%	7,935	100.0%	17,038	100.0%	2,518	100.0%	19,556	100.0%

COMMITMENTS TO THE DEPARTMENT BY AGE AND RECEPTION CENTER
FISCAL YEAR 1996
7/1/95 - 6/30/96

AGE	CRC MALE	LORCI MALE	TOTAL MALE	ORW FEMALE	DEPT. TOTAL	% OF INTAKE
15	6	2	8	0	8	0.04%
16	33	23	56	5	61	0.31%
17	83	43	126	1	127	0.65%
18	397	274	671	20	691	3.53%
19	582	521	1,103	52	1,155	5.91%
20	588	482	1,070	80	1,150	5.88%
21	502	431	933	73	1,006	5.14%
22	474	352	826	59	885	4.53%
23	409	351	760	65	825	4.22%
24	394	337	731	103	834	4.26%
25	354	340	694	111	805	4.12%
26	320	282	602	89	691	3.53%
27	316	277	593	110	703	3.59%
28	312	258	570	103	673	3.44%
29	275	258	533	103	636	3.25%
30	272	262	534	123	657	3.36%
31	296	228	524	109	633	3.24%
32	322	247	569	112	681	3.48%
33	262	264	526	117	643	3.29%
34	291	234	525	110	635	3.25%
35	263	265	528	116	644	3.29%
36	280	248	528	114	642	3.28%
37	254	240	494	101	595	3.04%
38	249	242	491	83	574	2.94%
39	213	181	394	99	493	2.52%
40	194	170	364	82	446	2.28%
41	185	175	360	63	423	2.16%
42	147	141	288	63	351	1.79%
43	106	116	222	50	272	1.39%
44	106	88	194	42	236	1.21%
45	94	89	183	28	211	1.08%
46	77	80	157	22	179	0.92%
47	58	59	117	16	133	0.68%
48	70	58	128	22	150	0.77%
49	45	42	87	11	98	0.50%
50	32	39	71	11	82	0.42%
51	36	34	70	7	77	0.39%
52	27	19	46	7	53	0.27%
53	27	23	50	8	58	0.30%
54	27	16	43	6	49	0.25%
55	20	18	38	3	41	0.21%
56	10	12	22	3	25	0.13%
57	19	15	34	3	37	0.19%
58	16	9	25	1	26	0.13%
59	11	12	23	2	25	0.13%
60	9	8	17	3	20	0.10%
61	1	7	8	0	8	0.04%
62	5	10	15	2	17	0.09%
63	1	8	9	1	10	0.05%
64	5	6	11	0	11	0.06%
65 AND OVER	28	39	67	4	71	0.36%
TOTAL	9,103	7,935	17,038	2,518	19,556	100.00%
MEAN	29.56	30.15	29.83	32.33	30.15	
MEDIAN	28.00	28.00	28.00	32.00	29.00	

COMMITMENTS TO THE DEPARTMENT BY OFFENSE CATEGORY, OFFENSE AND RECEPTION CENTER

FISCAL YEAR 1996

7/1/95 - 6/30/96

MOST SERIOUS OFFENSE	CRC MALE	LORCI MALE	TOTAL MALE	ORW FEMALE	DEPT. TOTAL
CRIMES AGAINST PERSONS (EXCLUDING SEX OFFENSES)	1,954	1,707	3,661	376	4,037
ABDUCTION	25	18	43	1	44
AGGRAVATED ARSON	15	18	33	11	44
AGGRAVATED ASSAULT	262	189	451	62	513
AGGRAVATED MENACING	6	3	9	0	9
AGGRAVATED MURDER	50	58	108	10	118
AGGRAVATED ROBBERY	208	191	399	17	416
AGGRAVATED VEHICULAR ASSAULT	32	27	59	7	66
AGGRAVATED VEHICULAR HOMICIDE	19	18	37	3	40
ASSAULT	98	77	175	27	202
ATTEMPTED ABDUCTION	6	6	12	0	12
ATTEMPTED AGGRAVATED ARSON	9	8	17	2	19
ATTEMPTED AGGRAVATED MURDER	4	1	5	3	8
ATTEMPTED AGGRAVATED ROBBERY	9	22	31	0	31
ATTEMPTED FELONIOUS ASSAULT	30	82	112	10	122
ATTEMPTED INVOLUNTARY MANSLAUGHTER	0	1	1	1	2
ATTEMPTED MURDER	17	11	28	2	30
ATTEMPTED ROBBERY	68	94	162	21	183
ATTEMPTED VOLUNTARY MANSLAUGHTER	1	0	1	0	1
CHILD ENDANGERMENT	24	12	36	39	75
CHILD STEALING	2	1	3	1	4
CONTRIBUTING TO THE DELINQUENCY OF CHILD	1	1	2	0	2
DOMESTIC VIOLENCE	228	186	414	3	417
ETHNIC INTIMIDATION	1	1	2	0	2
FELONIOUS ASSAULT	259	280	539	55	594
INVOLUNTARY MANSLAUGHTER	66	56	122	23	145
KIDNAPPING	32	20	52	4	56
MURDER	40	59	99	9	108
NONSUPPORT OF DEPENDENTS	121	9	130	1	131
PATIENT ABUSE	0	0	0	1	1
ROBBERY	290	231	521	54	575
TELEPHONE HARASSMENT	8	5	13	1	14
UNLAWFUL RESTRAINT	0	1	1	0	1
VOLUNTARY MANSLAUGHTER	23	21	44	8	52
SEX OFFENSES	656	531	1,187	32	1,219
ATTEMPTED CORRUPTING A MINOR	22	11	33	0	33
ATTEMPTED FELONIOUS SEXUAL PENETRATION	11	14	25	0	25
ATTEMPTED RAPE	61	50	111	2	113
ATTEMPTED SEXUAL BATTERY	1	1	2	0	2
COMPELLING PROSTITUTION	4	0	4	0	4
CORRUPTING A MINOR	119	54	173	9	182
DISSEMINATING MATTER HARMFUL TO JUVENILES	3	1	4	1	5
FELONIOUS SEXUAL PENETRATION	21	37	58	1	59
GROSS SEXUAL IMPOSITION (INCLUDES ATTEMPTS)	201	133	334	5	339
IMPORTUNING	0	1	1	0	1
PANDERING OBSCENITY	6	3	9	2	11
PROMOTING PROSTITUTION	2	3	5	2	7
RAPE	122	126	248	5	253
SEXUAL BATTERY	83	97	180	5	185

COMMITMENTS TO THE DEPARTMENT BY OFFENSE CATEGORY, OFFENSE AND RECEPTION CENTER
FISCAL YEAR 1996
7/1/95 - 6/30/96

MOST SERIOUS OFFENSE	CRC MALE	LORCI MALE	TOTAL MALE	ORW FEMALE	DEPT. TOTAL
BURGLARY	770	553	1,323	71	1,394
AGGRAVATED BURGLARY	178	178	356	21	377
ATTEMPTED AGGRAVATED BURGLARY	21	30	51	2	53
BURGLARY (INCLUDES ATTEMPTED)	571	345	916	48	964
MISCELLANEOUS PROPERTY OFFENSES	2,398	1,784	4,182	833	5,015
ARSON	50	33	83	14	97
BREAKING AND ENTERING	339	188	527	12	539
CRIMINAL TRESPASS	1	0	1	0	1
DISRUPTING PUBLIC SERVICES	5	4	9	0	9
GRAND THEFT	1,273	1,016	2,289	673	2,962
RECEIVING STOLEN PROPERTY	617	487	1,104	123	1,227
SAFECRACKING	9	7	16	0	16
TAMPERING WITH COIN MACHINE	6	3	9	0	9
THEFT OF DRUGS	0	0	0	1	1
UNAUTHORIZED USE OF PROPERTY	2	1	3	1	4
UNAUTHORIZED USE OF VEHICLE	52	19	71	4	75
VANDALISM	44	26	70	5	75
DRUG OFFENSES	2,375	2,693	5,068	922	5,990
CORRUPTION OF ANOTHER WITH DRUGS	7	8	15	4	19
DECEPTION TO OBTAIN DRUGS	21	12	33	29	62
DRUG ABUSE	798	1,198	1,996	491	2,487
DRUG LAW VIOLATIONS	1	0	1	0	1
ILLEGAL PROCESSING OF DRUGS	15	17	32	8	40
PERMITTING DRUG ABUSE	1	1	2	9	11
PHARMACY FRAUD	1	0	1	0	1
SALE OF COUNTERFEIT DRUGS	37	45	82	6	88
TRAFFICKING IN DRUGS	1,494	1,412	2,906	375	3,281
MOTOR VEHICLE OFFENSES	5	2	7	0	7
DRIVING WHILE INTOXICATED	2	1	3	0	3
MOTOR VEHICLE CERTIFICATE	1	0	1	0	1
OPERATING WITHOUT LICENSE	0	1	1	0	1
TAMPERING WITH VEHICLE I.D. NUMBER	2	0	2	0	2
FRAUD OFFENSES	258	176	434	187	621
CRIMINAL SIMULATION	2	0	2	0	2
DEFRAUDING LIVERY OR HOSTELRY	2	2	4	0	4
ENGAGING IN PATTERN OF CORRUPT ACTIVITY	12	34	46	8	54
EXTORTION	2	6	8	0	8
FORGERY	141	71	212	114	326
INSURANCE FRAUD	5	2	7	2	9
INTERCEPTION OF WIRE OR ORAL COMMUNICATION	1	0	1	0	1
MISUSE OF CREDIT CARD	24	8	32	11	43
PASSING BAD CHECKS	61	46	107	45	152
SECURING WRITINGS BY DECEPTION	3	0	3	1	4
TRAFFICKING IN FOOD STAMPS	4	7	11	6	17
WORKERS' COMPENSATION FRAUD	1	0	1	0	1
FIREARMS OFFENSE	413	310	723	38	761

COMMITMENTS TO THE DEPARTMENT BY OFFENSE CATEGORY, OFFENSE AND RECEPTION CENTER

FISCAL YEAR 1996

7/1/95 - 6/30/96

MOST SERIOUS OFFENSE	CRC MALE	LORCI MALE	TOTAL MALE	ORW FEMALE	DEPT. TOTAL
CARRYING CONCEALED WEAPON	270	188	458	16	474
HAVING WEAPON WHILE UNDER DISABILITY	73	79	152	2	154
ILLEGAL WEAPONS CONVEYANCE/CORRECT. FACILITY	12	8	20	12	32
IMPROPER HANDLING OF FIREARMS	17	9	26	2	28
POSSESSING CRIMINAL TOOLS	26	19	45	6	51
UNLAWFUL POSSESSION OF FIREARM	15	7	22	0	22

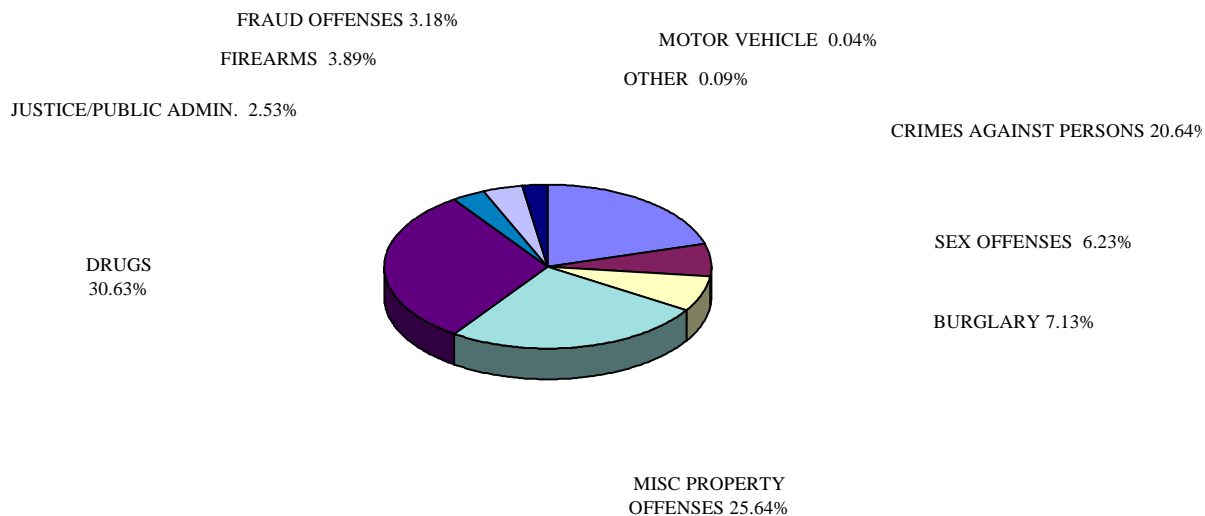
OFFENSES AGAINST JUSTICE/PUBLIC ADMINISTRATION	264	173	437	57	494
AIDING ESCAPE	0	0	0	2	2
BRIBERY	1	4	5	1	6
ESCAPE	100	34	134	21	155
FAILURE TO APPEAR	21	4	25	4	29
FALSIFICATION	0	1	1	0	1
IMPERSONATING A POLICE OFFICER	0	1	1	0	1
INTERFERENCE WITH CUSTODY	0	1	1	0	1
INTIMIDATION	11	9	20	0	20
INTIMIDATION OF CRIME VICTIM OR WITNESS	15	9	24	2	26
OBSTRUCTING JUSTICE	9	7	16	3	19
PERJURY	2	4	6	0	6
RESISTING ARREST	79	69	148	8	156
TAMPERING WITH EVIDENCE	18	20	38	6	44
TAMPERING WITH RECORDS	2	4	6	7	13
THEFT IN OFFICE	5	6	11	2	13
VIOLATION OF OWN RECOGNIZANCE	0	0	0	1	1
VIOLATION OF PROTECTION ORDER	1	0	1	0	1
OTHER FELONIES	10	6	16	2	18
AGGRAVATED RIOT	4	2	6	1	7
DISORDERLY CONDUCT	0	1	1	0	1
DOG FIGHTING	1	0	1	0	1
GAMBLING	0	2	2	0	2
HAZARDOUS WASTE	1	1	2	0	2
INCITING TO RIOT	1	0	1	1	2
INDUCING PANIC	2	0	2	0	2
TAMPERING WITH UTILITY	1	0	1	0	1
TOTAL FELONIES	9,103	7,935	17,038	2,518	19,556

* FOR CRIMES AGAINST PERSONS, SEX OFFENSES AND AGGRAVATED BURGLARY, ATTEMPTED OFFENSES ARE REPORTED SEPARATELY. FOR OTHER CRIMES, ATTEMPTED OFFENSES ARE INCLUDED IN THE PRIMARY CATEGORIES.

COMMITMENTS TO THE DEPARTMENT BY OFFENSE CATEGORY, OFFENSE AND RECEPTION CENTER
FISCAL YEAR 1996
 7/1/95 - 6/30/96

MOST SERIOUS OFFENSE	CRC	LORCI	TOTAL	ORW	DEPT.
	MALE	MALE	MALE	FEMALE	TOTAL

FIGURE 2. FY 1996 COMMITMENTS BY OFFENSE CATEGORY



**COMMITMENTS TO THE DEPARTMENT BY INDEFINITE MINIMUM SENTENCE AND FELONY LEVEL
FISCAL YEAR 1996
7/1/95 - 6/30/96**

MINIMUM YEARS	4TH DEGREE OFFENSE	3RD DEGREE OFFENSE	2ND DEGREE OFFENSE	1ST DEGREE OFFENSE	LIFE	DEATH	DEPT. TOTAL	TOTAL % OF INTAKE
0.5	1	0	0	0	0	0	1	0.01%
1.0	7	2	0	0	0	0	9	0.05%
1.5	185	12	0	0	0	0	197	1.01%
2.0	140	308	109	1	0	0	558	2.85%
2.5	59	45	6	0	0	0	110	0.56%
3.0	132	219	912	5	0	0	1,268	6.48%
3.5	2	34	40	2	0	0	78	0.40%
4.0	16	136	349	30	0	0	531	2.72%
4.5	9	22	46	2	0	0	79	0.40%
5.0	4	91	392	409	0	0	896	4.58%
5.5	1	13	24	10	0	0	48	0.25%
6.0	3	19	164	151	0	0	337	1.72%
6.5	0	14	22	13	0	0	49	0.25%
7.0	1	12	86	190	0	0	289	1.48%
7.5	2	3	8	8	0	0	21	0.11%
8.0	1	9	167	155	0	0	332	1.70%
8.5	0	1	9	9	0	0	19	0.10%
9.0	1	2	16	57	0	0	76	0.39%
9.5	1	1	9	2	0	0	13	0.07%
10.0	0	2	22	208	30	0	262	1.34%
10.5	0	0	2	5	0	0	7	0.04%
11.0	0	0	16	21	0	0	37	0.19%
11.5	0	1	0	6	0	0	7	0.04%
12.0	0	1	14	33	3	0	51	0.26%
12.5	0	0	2	2	0	0	4	0.02%
13.0	0	0	9	21	0	0	30	0.15%
13.5	0	0	0	2	0	0	2	0.01%
14.0	0	0	6	21	0	0	27	0.14%
15.0	1	4	12	124	94	0	235	1.20%
15.5	0	0	2	4	1	0	7	0.04%
16.0	0	0	3	3	1	0	7	0.04%
16.5	0	0	1	8	2	0	11	0.06%
17.0	0	0	2	5	2	0	9	0.05%
18.0	0	0	0	0	5	0	5	0.03%
18.5	0	1	1	1	1	0	4	0.02%
19.0	0	0	0	3	3	0	6	0.03%
19.5	0	0	1	5	0	0	6	0.03%
20.0	0	0	0	0	49	0	49	0.25%
21.0	0	0	0	1	1	0	2	0.01%
21.5	0	0	0	0	5	0	5	0.03%
22.0	0	0	0	1	1	0	2	0.01%
23.0	0	0	0	2	1	0	3	0.02%
23.5	0	0	1	0	0	0	1	0.01%

**COMMITMENTS TO THE DEPARTMENT BY INDEFINITE MINIMUM SENTENCE AND FELONY LEVEL
FISCAL YEAR 1996
7/1/95 - 6/30/96**

MINIMUM YEARS	4TH DEGREE OFFENSE	3RD DEGREE OFFENSE	2ND DEGREE OFFENSE	1ST DEGREE OFFENSE	LIFE	DEATH	DEPT. TOTAL	TOTAL % OF INTAKE
25.0	0	0	0	0	4	0	4	0.02%
26.0	0	0	0	1	2	0	3	0.02%
27.0	0	0	0	0	1	0	1	0.01%
28.0	0	0	0	0	2	0	2	0.01%
29.0	0	0	0	1	0	0	1	0.01%
30.0	0	0	0	2	29	0	31	0.16%
31.0	0	0	1	0	0	0	1	0.01%
35.0	0	0	0	0	3	0	3	0.02%
36.5	0	0	0	0	1	0	1	0.01%
38.0	0	0	0	0	1	0	1	0.01%
40.0	0	0	0	0	4	0	4	0.02%
50.0	0	0	0	1	2	0	3	0.02%
54.0	0	0	0	0	1	0	1	0.01%
60.0	0	0	0	0	3	0	3	0.02%
95.0	0	0	0	0	1	0	1	0.01%
DEATH	0	0	0	0	0	16	16	0.08%
TOTAL	566	952	2,454	1,525	253	16	5,766	29.48%

COMMITMENTS TO THE DEPARTMENT BY DEFINITE SENTENCE AND RECEPTION CENTER
FISCAL YEAR 1996
7/1/95 - 6/30/96

DEFINITE YEARS	CRC MALE	LORCI MALE	TOTAL MALE	ORW FEMALE	DEPT. TOTAL	TOTAL % OF INTAKE
0.5	803	1,239	2,042	377	2,419	12.37%
1.0	2,001	1,793	3,794	722	4,516	23.09%
1.5	1,986	1,328	3,314	528	3,842	19.65%
2.0	804	502	1,306	224	1,530	7.82%
2.5	143	86	229	31	260	1.33%
3.0	295	177	472	74	546	2.79%
3.5	83	56	139	25	164	0.84%
4.0	137	75	212	22	234	1.20%
4.5	46	13	59	16	75	0.38%
5.0	23	25	48	3	51	0.26%
5.5	16	6	22	2	24	0.12%
6.0	29	18	47	5	52	0.27%
6.5	3	2	5	4	9	0.05%
7.0	5	3	8	3	11	0.06%
7.5	8	3	11	2	13	0.07%
8.0	12	4	16	0	16	0.08%
8.5	0	1	1	0	1	0.01%
9.0	2	3	5	1	6	0.03%
9.5	2	1	3	0	3	0.02%
10.0	6	2	8	1	9	0.05%
11.0	1	0	1	0	1	0.01%
11.5	1	1	2	0	2	0.01%
12.0	2	0	2	1	3	0.02%
13.5	1	0	1	0	1	0.01%
15.5	0	1	1	0	1	0.01%
16.0	1	0	1	0	1	0.01%
DEFINITE TOTAL	6,410	5,339	11,749	2,041	13,790	70.52%
INDEFINITE TOTAL	2,693	2,596	5,289	477	5,766	29.48%
DEPT. TOTAL	9,103	7,935	17,038	2,518	19,556	100.00%

DEFINITE SENTENCES ACCOUNT FOR:

- 70.5% OF ALL SENTENCES
- 69.0% OF ALL MALE SENTENCES
- 81.1% OF ALL FEMALE SENTENCES