



Ohio Department of Rehabilitation and Correction

1050 Freeway Drive North
Columbus, OH 43229

Ted Strickland, Governor

www.drc.state.oh.us

Terry Collins, Director

TO: ALL CONCERNED
FROM: SENARATH DASSANAYAKA, SENIOR RESEARCHER
BUREAU OF RESEARCH
OFFICE OF POLICY

DATE: 1/26/2007

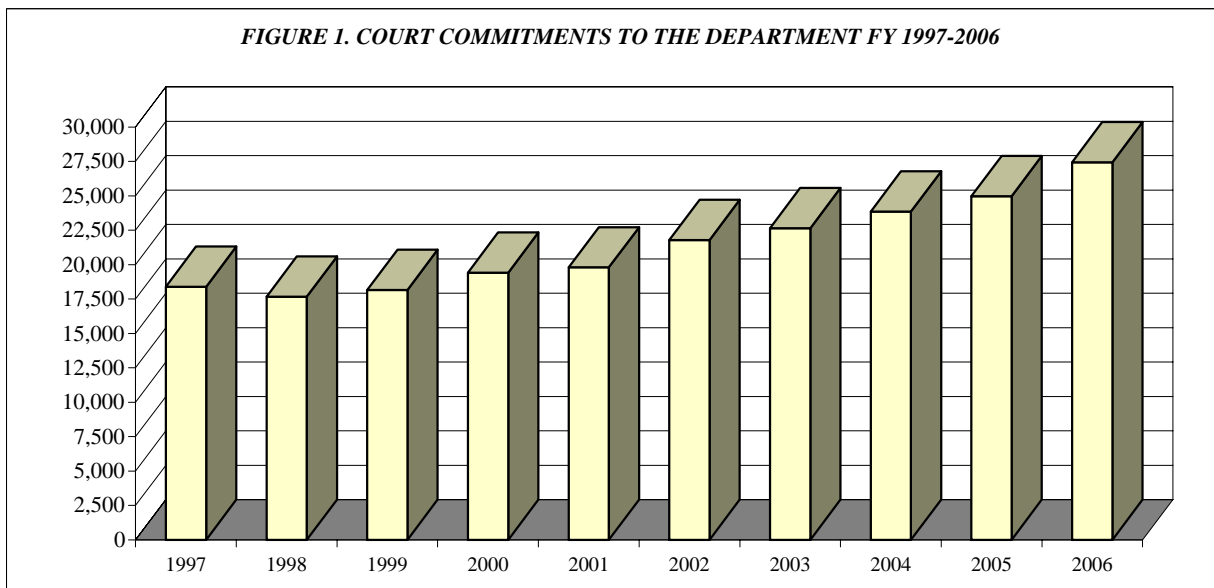
SUBJECT: FISCAL YEAR 2006 SUMMARY OF INSTITUTION STATISTICS

TOTAL COURT COMMITMENTS TO THE OHIO DEPARTMENT OF REHABILITATION AND CORRECTION

<u>OFFICIAL COMMITMENT TOTALS</u>			
CRC RECEPTION - MALE	13,424	MALE INTAKE	23,926
LORCI RECEPTION - MALE	10,502	FEMALE INTAKE	3,505
ORW RECEPTION - FEMALE	3,505	TOTAL	27,431
TOTAL	27,431		

<u>COURT COMMITMENTS TO THE DEPARTMENT FY 1997-2006</u>									
1997	1998	1999	2000	2001	2002	2003	2004	2005	2006
18,404	17,681	18,165	19,418	19,801	21,787	22,649	23,866	24,985	27,431

FIGURE 1. COURT COMMITMENTS TO THE DEPARTMENT FY 1997-2006

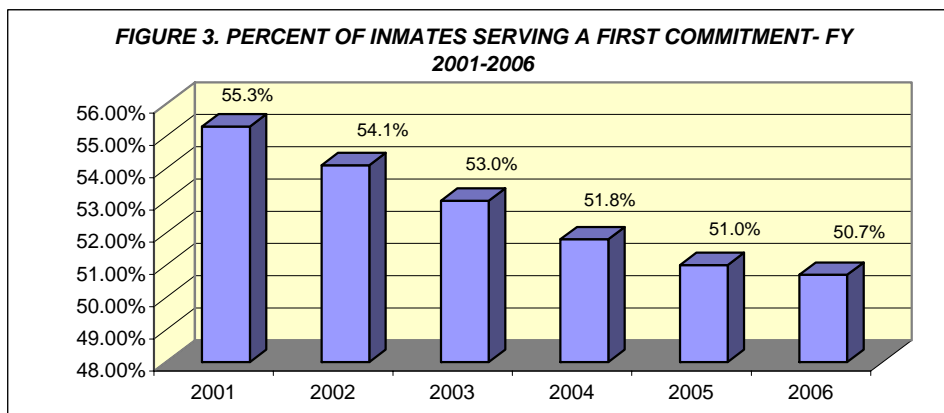
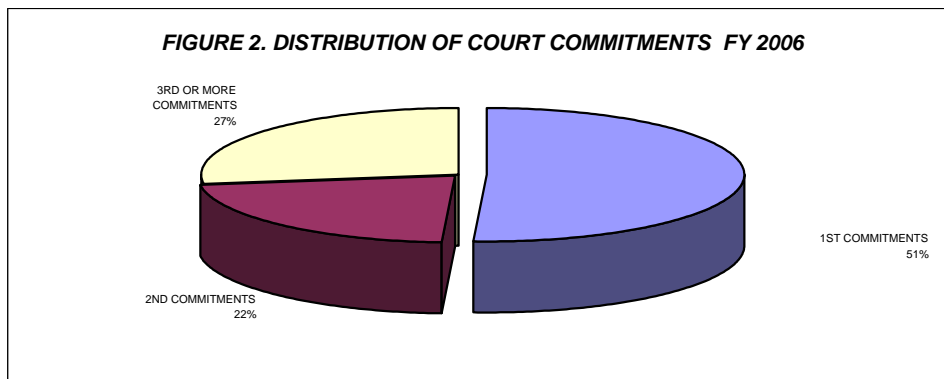


NUMBER OF COMMITMENTS TO THE DEPARTMENT								
FY 2006*	CRC MALE	LORCI MALE	MALE N	MALE %	ORW FEMALE	FEMALE %	TOTAL N	TOTAL %
1ST COMMITMENTS	6,902	4,694	11,596	48.5%	2325	66.3%	13,921	50.7%
2ND COMMITMENTS	3,051	2,386	5,437	22.7%	632	18.0%	6,069	22.1%
3RD OR MORE COMMIT.	3,471	3,422	6,893	28.8%	548	15.6%	7,441	27.1%
TOTAL	13,424	10,502	23,926	100.0%	3,505	100.0%	27,431	100.0%

NUMBER OF COMMITMENTS TO THE DEPARTMENT								
FY 2005*	CRC MALE	LORCI MALE	MALE N	MALE %	ORW FEMALE	FEMALE %	TOTAL N	TOTAL %
1ST COMMITMENTS	6,433	4,189	10,622	48.6%	2110	67.1%	12,732	51.0%
2ND COMMITMENTS	2,809	2,219	5,028	23.0%	574	18.3%	5,602	22.4%
3RD OR MORE COMMIT.	3,185	3,006	6,191	28.3%	460	14.6%	6,651	26.6%
TOTAL	12,427	9,414	21,841	100.0%	3,144	100.0%	24,985	100.0%

NUMBER OF COMMITMENTS TO THE DEPARTMENT								
FY 2004*	CRC MALE	LORCI MALE	MALE N	MALE %	ORW FEMALE	FEMALE %	TOTAL N	TOTAL %
1ST COMMITMENTS	6,016	4,417	10,433	49.7%	1,920	66.7%	12,353	51.8%
2ND COMMITMENTS	2,628	2,260	4,888	23.3%	467	16.2%	5,355	22.4%
3RD OR MORE COMMIT.	2,796	2,870	5,666	27.0%	492	17.1%	6,158	25.8%
TOTAL	11,440	9,547	20,987	100.0%	2,879	100.0%	23,866	100.0%

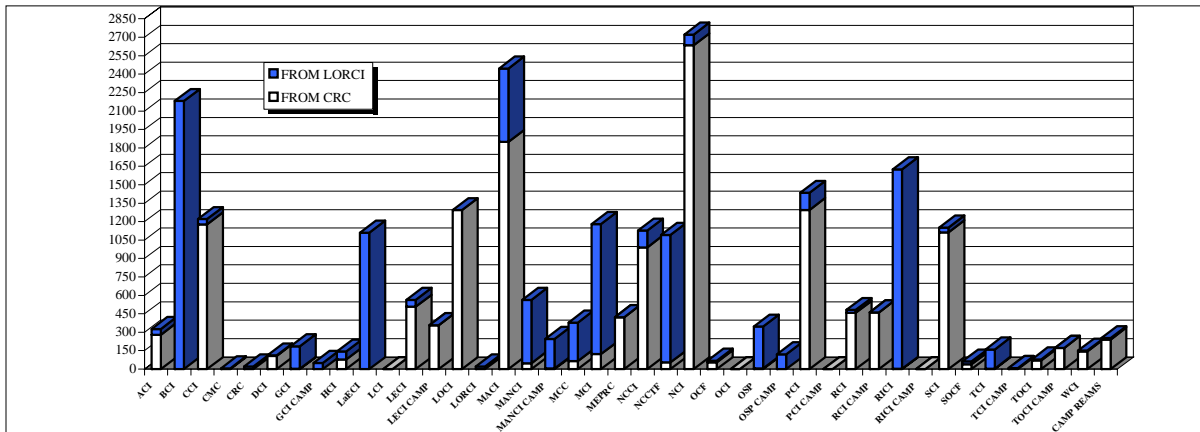
* THIS TABLE IS PRODUCED FROM A DOTS SUMMARY OF PRIOR OHIO COMMITMENTS.



INMATE TRANSFERS FROM MALE RECEPTION CENTERS

	FROM CRC RECEPTION TO:				FROM LORCI RECEPTION TO:			
	2006	2005	2004	2003	2006	2005	2004	2003
ACI	279	414	435	303	47	34	38	34
BCI	1	0	27	0	2181	1598	1,423	1,116
CCI	1178	1,144	1,032	882	43	55	36	43
CMC	3	2	7	12	3	4	1	11
CRC	0	0	0	0	22	44	15	31
DCI	108	100	163	250	3	0	1	16
GCI	2	4	0	0	183	198	394	75
GCI CAMP	0	3	0	0	50	114	31	0
HCF	77	0	87	88	65	72	70	68
LaECI	0	91	0	9	1110	913	879	683
LCI	0	0	0	447	0	0	0	11
LECI	507	350	547	558	56	34	19	3
LECI CAMP	358	186	18	18	0	0	0	0
LOCI	1293	1,112	860	599	1	3	6	5
LORCI	0	1	2	9	22	0	1	0
MACI	1848	1,675	1,792	1,351	598	553	880	781
MANCI	47	47	30	63	516	579	804	744
MANCI CAMP	5	0	1	0	241	321	142	204
MCC	64	0	0	0	314	364	159	193
MCI	122	1	3	8	1058	1,178	1,205	873
MEPRC	423	448	442	467	0	0	0	1
NCCI	990	1,187	1,059	521	137	79	13	31
NCCTF	54	83	144	325	1038	853	761	609
NCI	2634	1,814	1,516	1,453	88	481	498	246
OCF	56	44	32	43	12	4	11	21
OCI	0	0	0	0	0	0	0	0
OSP	4	0	16	2	341	242	410	322
OSP CAMP	0	0	1	0	120	142	59	173
PCI	1295	1,213	1,858	1,754	139	123	383	760
PCI CAMP	0	7	0	189	0	0	0	0
RCI	458	425	765	697	23	24	37	15
RCI CAMP	462	428	60	160	0	0	0	0
RICI	2	15	0	15	1624	1,455	1,384	1,059
RICI CAMP	0	0	0	0	0	0	0	13
SCI	1112	1,243	1,326	760	40	80	232	211
SOCF	38	26	12	89	24	10	14	43
TCI	3	4	9	14	157	149	616	634
TCI CAMP	8	0	0	0	0	82	133	141
TOCI	70	91	214	286	9	18	31	2
TOCI CAMP	172	139	32	36	0	0	1	8
WCI	144	93	109	160	6	19	2	1
CAMP REAMS	240	190	41	54	12	55	41	55
TOTAL	14057	12,580	12,640	11,622	10,283	9,880	10,730	9,236

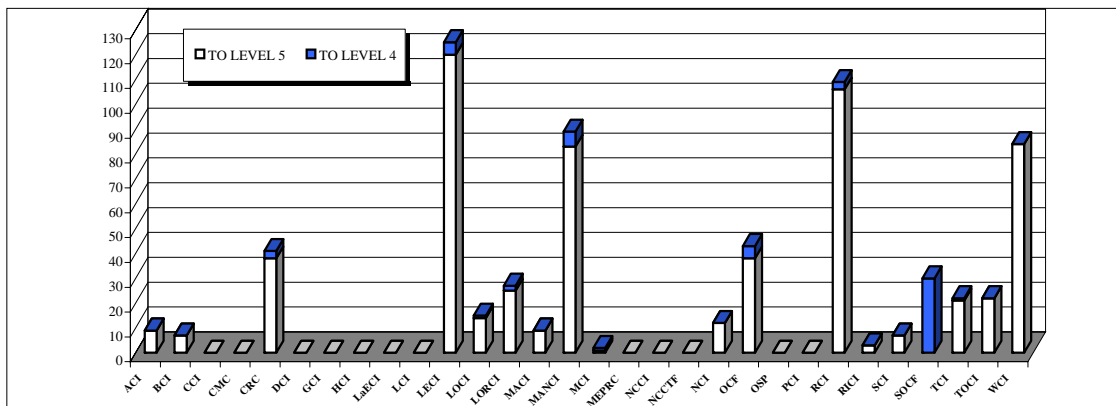
FIGURE 4. INMATES RECEIVED FROM CRC AND LORCI - FY 2006



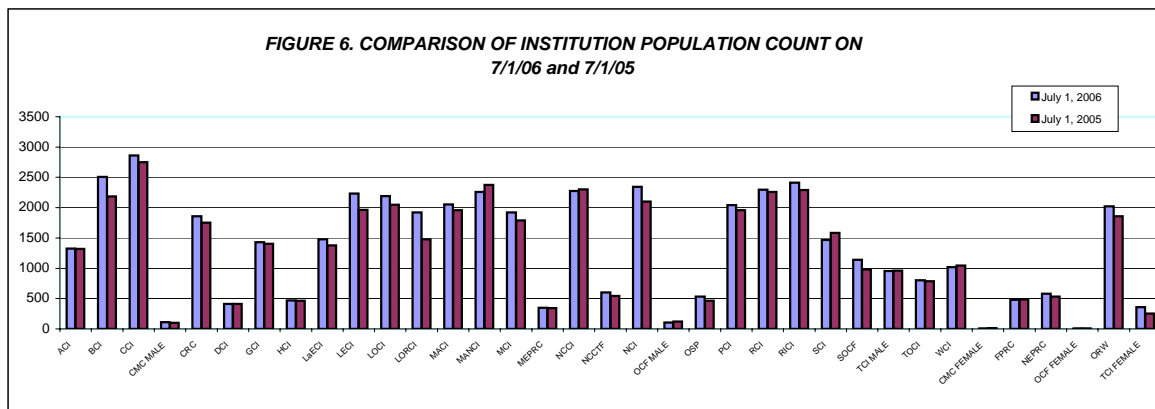
DISCIPLINARY AND ADMINISTRATIVE TRANSFERS

	FROM LESSER CUSTODY TO:				FROM HIGHER TO LESSER CUSTODY			
	LEVEL 5 (HI MAX) (OSP)		LEVEL 4 (MAX) (SOCF)		LEVEL 5 (HI MAX) (OSP)		LEVEL 4 (MAX) (SOCF)	
	2006	2005	2006	2005	2006	2005	2006	2005
ACI	0	0	9	1	0	0	2	0
BCI	0	0	7	23	0	0	4	16
CCI	0	0	0	4	0	0	1	0
CMC	0	2	0	1	0	1	0	1
CRC	3	1	38	21	1	3	13	33
DCI	0	0	0	0	0	0	0	0
GCI	0	0	0	0	0	0	0	0
HCF	0	0	0	0	0	0	0	0
LaECI	0	0	0	0	0	0	0	0
LCI	0	0	0	0	0	0	0	0
LECI	5	1	120	95	4	5	67	69
LOCI	1	0	14	16	0	1	2	7
LORCI	2	0	25	10	0	0	0	1
MACI	0	0	9	21	0	0	1	1
MANCI	6	6	83	69	25	13	19	33
MCI	1	0	1	0	0	0	0	0
MEPRC	0	0	0	0	0	0	0	0
NCCI	0	0	0	4	1	0	0	0
NCCTF	0	0	0	0	0	0	0	0
NCI	0	0	12	4	0	0	4	0
OCF	5	0	38	36	5	0	32	38
OSP	0	0	0	0	0	0	3	3
PCI	0	0	0	4	0	0	0	0
RCI	3	2	106	96	6	13	84	81
RICI	0	0	3	16	0	1	2	3
SCI	0	0	7	2	0	0	1	1
SOCF	30	115	0	0	65	33	0	0
TCI	1	1	21	30	12	13	12	20
TOCI	0	0	22	20	13	13	11	9
WCI	0	1	84	76	3	5	69	65
TOTAL	57	129	599	549	135	101	327	381

FIGURE 5. TRANSFERS TO LEVEL 5 (HI MAX) AND LEVEL 4 (MAXIMUM) CUSTODY IN FY 2006



INSTITUTION POPULATION TREND (PREVIOUS YEAR COMPARISON)				
		7/1/2006	7/1/2005	DIFFERENCE
ACI	(Allen Correctional Institution)	1326	1,320	6 0.5%
BCI	(Belmont Correctional Institution)	2507	2,184	323 14.8%
CCI	(Chillicothe Correctional Institution)	2861	2,751	110 4.0%
CMC MALE	(Correctional Medical Center)	112	98	14 14.3%
CRC	(Correctional Reception Center)	1860	1,751	109 6.2%
DCI	(Dayton Correctional Institution)	413	410	3 0.7%
GCI	(Grafton Correctional Institution)	1433	1,405	28 2.0%
HCI	(Hocking Correctional Institution)	468	464	4 0.9%
LaECI	(Lake Erie Correctional Institution)	1476	1,378	98 7.1%
LCI	(Lima Correctional Institution)	0	0	0 0.0%
LECI	(Lebanon Correctional Institution)	2232	1,963	269 13.7%
LOCI	(London Correctional Institution)	2189	2,047	142 6.9%
LORCI	(Lorain Correctional Institution)	1923	1,479	444 30.0%
MACI	(Madison Correctional Institution)	2056	1,957	99 5.1%
MANCI	(Mansfield Correctional Institution)	2260	2,378	-118 -5.0%
MCI	(Marion Correctional Institution)	1922	1,787	135 7.6%
MEPRC	(Montgomery Education & Pre-Release Center)	347	345	2 0.6%
NCCI	(North Central Correctional Institution)	2275	2,303	-28 -1.2%
NCCTF	(North Coast Correctional Treatment Facility)	604	546	58 10.6%
NCI	(Noble Correctional Institution)	2346	2,103	243 11.6%
OCF MALE	(Oakwood Correctional Facility)	108	119	-11 -9.2%
OSP	(Ohio State Penitentiary)	535	466	69 14.8%
PCI	(Pickaway Correctional Institution)	2043	1,960	83 4.2%
RCI	(Ross Correctional Institution)	2294	2,261	33 1.5%
RICI	(Richland Correctional Institution)	2411	2,291	120 5.2%
SCI	(Southeastern Correctional Institution)	1467	1,583	-116 -7.3%
SOCF	(Southern Ohio Correctional Facility)	1141	984	157 16.0%
TCI	(Trumbull Correctional Institution)	956	963	-7 -0.7%
TOCI	(Toledo Correctional Institution)	803	787	16 2.0%
WCI	(Warren Correctional Institution)	1018	1,047	-29 -2.8%
MALE TOTAL		43,386	41,130	2,256 5.5%
CMC FEMALE	(Correctional Medical Center)	5	10	-5 -50.0%
FPRC	(Franklin Pre-Release Center)	482	484	-2 -0.4%
NEPRC	(Northeast Pre-Release Center)	582	532	50 9.4%
OCF FEMALE	(Oakwood Correctional Facility)	3	3	0 0.0%
ORW	(Ohio Reformatory for Women)	2023	1857	166 8.9%
TCI FEMALE	(Trumbull Correctional Institution)	358	254	104 40.9%
FEMALE TOTAL		3453	3140	313 10.0%
COMBINED MALE / FEMALE TOTAL		46,839	44,270	2,569 5.8%



RELEASES AND RETURNS:

INSTITUTIONAL STATISTICS

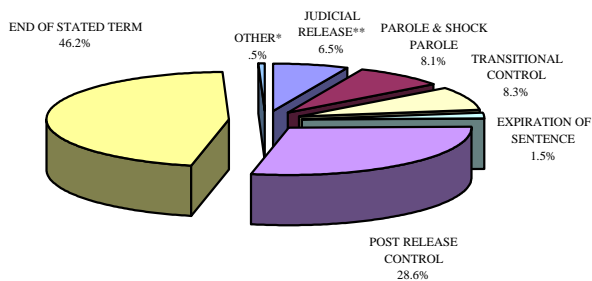
	FY 2006 FEMALE	FY 2006 MALE	FY 2006 TOTAL	FY 2005 TOTAL	FY 2004 TOTAL
RELEASED BY:					
SUSPENDED SENTENCE	0	18	18	33	18
VACATED SENTENCE	0	6	6	15	8
REGULAR PAROLE	74	2179	2,253	2,987	5,391
SHOCK PAROLE	0	0	0	2	6
JUDICIAL RELEASE	401	1396	1,797	1,732	1,740
POST RELEASE CONTROL	842	7102	7,944	7,307	7,818
TRANSITIONAL CONTROL	216	2081	2,297	2,512	1,794
EXPIRATION OF SENTENCE	41	453	494	409	653
END OF STATED TERM	1711	11122	12,833	12,168	11,105
APPEALS BOND	2	16	18	25	32
ESCAPES (from the Office of Prisons)	0	3	3	6	6
DEATHS (from the Bureau of Medical Services)	2	111	113	135	108
TOTAL RELEASED	3,289	24,487	27,776	27,331	28,679
RETURNED BY:					
PAROLE VIOLATION (TECH.) ¹	19	603	622	692	936
JUDICIAL RELEASE VIOLATION	129	719	848	704	679
POST RELEASE CONTROL VIOLATION ¹	74	1524	1,598	1,662	1,907
TRANSITIONAL CONTROL VIOLATION	41	204	245	219	155
REACTIVATED SUSPENDED SENTENCE	1	13	14	28	20
ESCAPES RETURNED	0	3	3	6	6
APPEALS BOND	3	11	14	15	18
TOTAL RETURNED	267	3,077	3,344	3,326	3,721

¹ Numbers from DOTS. PRC and Parole offenders being held at reception prior to a violation hearing have caused errors in the monthly report totals, so monthly totals are not summed for this report.

PAROLE VIOLATORS RECOMMISSIONED²	15	718	733	771	712
PRC FELONY VIOLATOR²	58	770	828	852	1,075

² PVR and PRC Felony Violator numbers from DOTS.

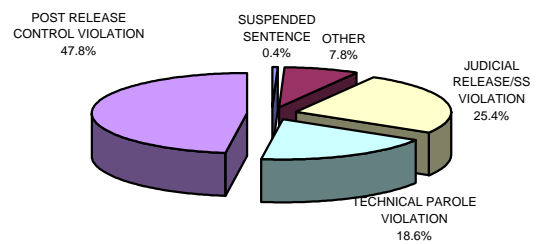
FIGURE 7. RELEASE TYPES FY 2006



*Other includes the following releases: vacated sentence, appeals bond, escapes and deaths.

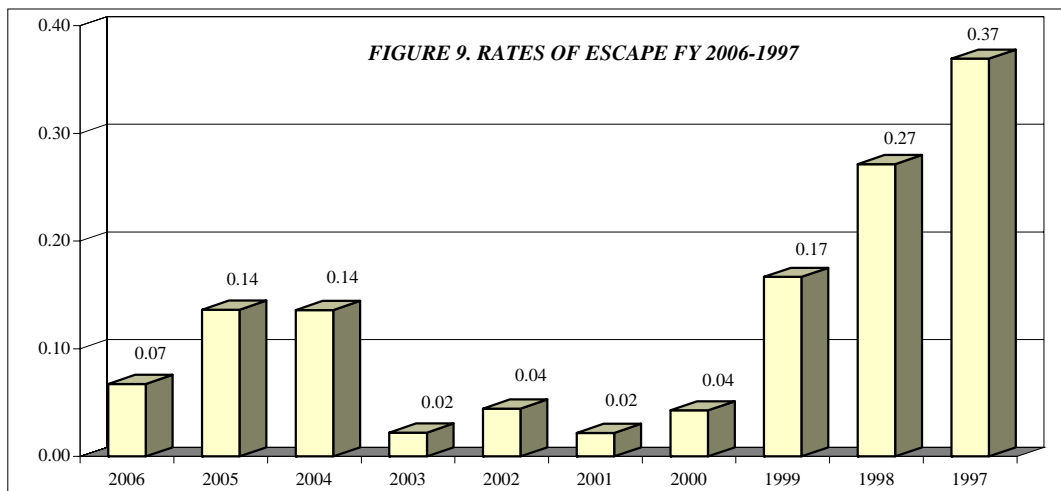
**Includes offenders released on suspended sentence.

FIGURE 8. RETURN TYPES FY 2006



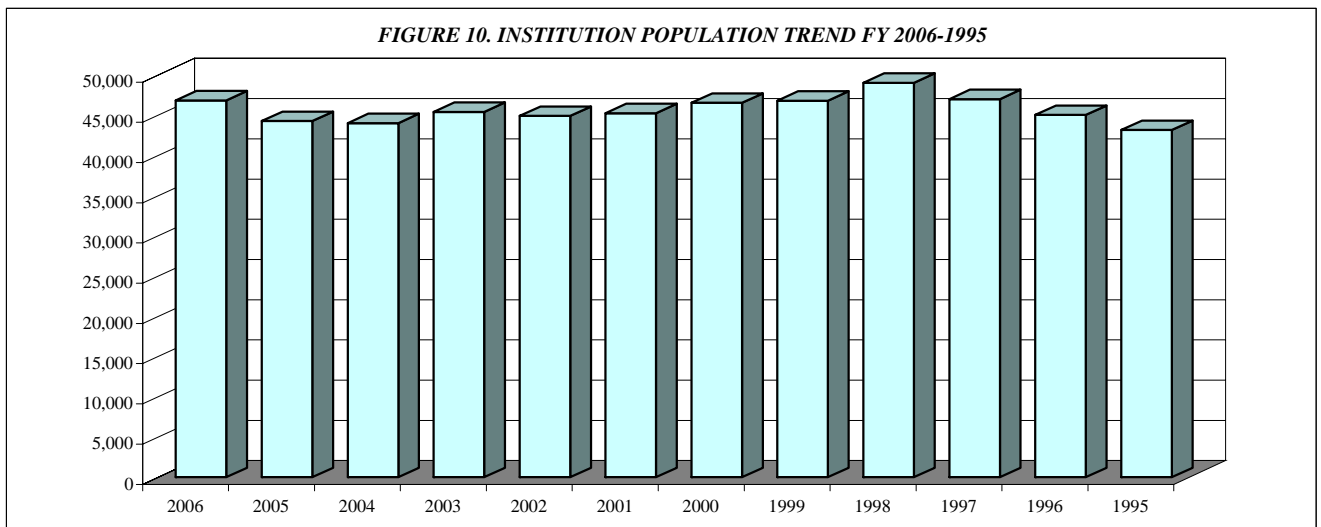
***Other includes returns for the following: transitional control violation, return from appeals bond and captured escapes.

ESCAPES AND RATES OF ESCAPE										
	2006	2005	2004	2003	2002	2001	2000	1999	1998	1997
ACI	0	0	0	0	0	0	0	0	2	0
BCI	0	0	0	0	0	0	0	0	0	1
CCI	0	0	0	0	0	0	0	2	0	0
CMC	0	0	0	0	0	0	0	0	0	0
CRC	0	0	0	0	0	0	0	0	0	0
DCI	0	1	0	0	0	0	0	0	0	0
FPRC	0	0	0	0	0	0	0	0	0	0
GCI	0	0	0	1	0	1	0	1	1	2
HCI	0	0	0	0	0	0	0	0	0	0
LaECI	0	0	0	0	0	0	0	0	0	0
LCI	0	0	0	0	0	0	0	0	0	0
LECI	1	0	0	0	1	0	0	0	0	0
LOCI	0	0	0	0	0	0	1	0	2	0
LORCI	0	0	0	0	0	0	0	0	0	0
MACI	0	0	0	0	0	0	0	1	0	1
MANCI	0	1	1	0	0	0	0	1	2	5
MCI	0	0	0	0	0	0	0	0	1	1
MEPRC	0	1	0	0	0	0	0	0	0	0
NEPRC	0	0	0	0	0	0	0	0	0	1
NCCI	0	0	0	0	0	0	0	0	0	0
NCCTF	0	0	0	0	0	0	0	0	0	0
NCI	0	0	0	0	0	0	0	0	0	0
OCF	0	0	0	0	0	0	0	0	0	0
OCI	0	0	0	0	0	0	0	0	0	0
ORW	0	0	0	0	0	0	0	0	0	0
OSP	0	1	0	0	0	0	0	0	0	0
PCI	2	0	3	0	0	0	1	1	1	2
RCI	0	2	1	0	0	0	0	1	2	1
RICI	0	0	0	0	0	0	0	0	0	0
SCI	0	0	1	0	1	0	0	1	2	2
SOCF	0	0	0	0	0	0	0	0	0	0
TCI	0	0	0	0	0	0	0	0	0	1
TOCI	0	0	0	0	0	0	0	0	0	0
WCI	0	0	0	0	0	0	0	0	0	0
TOTAL	3	6	6	1	2	1	2	8	13	17
AVG. SYSTEM POPULATION FOR YEAR	44565	44,038	44,134	45,175	44,980	45,609	46,690	47,988	47,899	46,031
RATE OF ESCAPE PER 1000 INMATES	0.07	0.14	0.14	0.02	0.04	0.02	0.04	0.17	0.27	0.37



INSTITUTION POPULATION TRENDS:

END OF THE YEAR INSTITUTIONAL POPULATION TREND FOR JULY 1, 2006 THROUGH JULY 1, 1995												
	2006	2005	2004	2003	2002	2001	2000	1999	1998	1997	1996	1995
ACI	1,326	1,320	1,320	1,227	1,173	1,152	1,328	1,401	1,421	1,375	1,294	1,404
BCI	2,507	2,184	2,184	2,120	2,080	2,040	1,901	2,423	2,650	2,355	2,252	283
CCI	2,861	2,751	2,751	2,579	2,264	2,246	2,195	2,448	2,854	2,628	2,582	2,620
CMC MALE	112	98	98	106	101	99	146	132	146	135	153	147
CMC FEMALE	5	10	10	6	2	5	2	3	5	5	8	5
CRC	1,860	1,751	1,751	1,916	1,858	1,558	1,733	1,667	2,304	2,155	2,142	2,240
DCI	413	410	410	459	474	472	473	474	483	486	485	484
FPRC	482	484	484	457	468	468	438	459	474	479	490	471
GCI	1,433	1,405	1,405	1,346	1,334	1,342	1,450	1,593	1,699	1,635	1,621	1,575
HCF	468	464	464	447	423	408	417	436	447	433	440	435
LaECI	1,476	1,378	1,378	1,388	1,369	1,362	999	0	0	0	0	0
LCI	0	0	0	496	1,566	1,485	1,549	1,650	1,937	1,990	2,125	1,926
LECI	2,232	1,963	1,963	1,728	1,625	1,680	1,875	2,192	2,307	2,225	2,103	2,188
LOCI	2,189	2,047	2,047	2,027	2,009	2,069	1,915	1,857	1,946	1,904	2,350	2,311
LORCI	1,923	1,479	1,479	1,954	1,632	1,443	1,548	1,676	2,116	2,041	1,993	2,071
MACI	2,056	1,957	1,957	2,110	2,063	2,009	2,093	2,471	2,601	2,483	2,552	2,589
MANCI	2,260	2,378	2,378	2,373	2,276	2,109	2,319	2,671	2,696	2,655	2,588	2,230
MCI	1,922	1,787	1,787	1,712	1,705	1,837	1,782	1,911	2,222	2,144	2,087	2,224
MEPRC	347	345	345	328	327	262	328	322	347	331	349	342
NEPRC	582	532	532	600	631	495	590	583	634	638	631	655
NCCI	2,275	2,303	2,303	2,199	2,080	1,955	2,145	2,280	2,312	2,226	2,252	2,262
NCCTF	604	546	546	533	567	554	549	0	0	0	0	0
NCI	2,346	2,103	2,103	1,964	1,854	1,850	2,014	2,054	2,397	2,128	0	0
OCF MALE	108	119	119	131	165	175	130	156	141	150	145	211
OCF FEMALE	3	3	3	0	8	5	8	9	5	0	0	0
OCI	0	0	0	0	0	1,743	1,920	1,935	2,038	2,056	2,242	2,430
ORW	2,023	1,857	1,857	1,827	1,765	1,726	1,807	1,802	1,780	1,716	1,673	1,531
ORW MALES	0	0	0	0	0	0	0	0	0	0	0	190
OSP	535	466	466	505	508	558	610	616	285	0	0	0
PCI	2,043	1,960	1,960	2,251	2,057	1,815	1,903	1,920	1,959	1,950	1,956	1,906
RCI	2,294	2,261	2,261	2,333	2,114	2,224	2,359	2,508	2,751	2,771	2,731	2,828
RICI	2,411	2,291	2,291	2,238	2,271	2,043	2,183	1,238	0	0	0	0
SCI	1,467	1,583	1,583	1,563	1,434	1,332	1,718	1,677	1,769	1,743	1,755	1,797
SOCF	1,141	984	984	1,230	1,399	1,438	1,409	1,436	1,481	1,410	1,176	1,009
TCI MALE	956	963	963	1,396	1,429	1,395	1,411	1,429	1,457	1,442	1,389	1,272
TCI FEMALE	358	254	0	0	0	0	0	0	0	0	0	0
TOCI	803	787	787	797	766	696	0	0	0	0	0	0
WCI	1,018	1,047	1,047	1,056	1,120	1,194	1,290	1,377	1,365	1,306	1,472	1,522
TOTAL	46,839	44,270	44,016	45,402	44,917	45,244	46,537	46,806	49,029	46,995	45,036	43,158



END OF THE YEAR INSTITUTIONAL POPULATION TREND FOR JULY 1, 1994 THROUGH JULY 1, 1986									
	1994	1993	1992	1991	1990	1989	1988	1987	1986
ACI	1,417	1,171	1,111	979	917	753	644	59	0
CCI	2,791	2,794	2,625	2,456	2,325	2,064	1,864	2,975	2,935
CLEV. P.R.	0	0	0	0	0	0	49	41	0
CMC MALE	148	0	0	0	0	0	0	0	0
CMC FEMALE	0	0	0	0	0	0	0	0	0
CRC	2,182	2,331	2,198	2,009	1,683	1,534	1,005	0	0
DCI	481	493	480	468	467	480	456	464	0
FPRC	456	428	364	356	344	322	0	0	0
GCI	1,620	1,317	1,307	1,121	1,054	793	0	0	0
HCI/HCF	449	441	397	405	328	317	322	323	323
LCI	1,897	1,974	1,923	1,878	1,840	1,702	1,611	1,721	1,704
LECI	2,202	2,192	1,911	1,942	1,937	1,939	1,868	1,851	2,095
LOCI	2,366	2,426	2,459	2,281	2,172	2,086	1,864	2,211	2,178
LORCI	2,337	2,313	2,163	1,886	1,520	0	0	0	0
MACI	2,599	2,111	2,088	1,898	1,705	1,416	1,313	68	0
MANCI	2,380	2,542	2,306	1,830	0	0	0	0	0
MCI	2,284	2,210	1,789	1,788	1,951	1,951	1,964	2,162	2,121
MEPRC	208	0	0	0	0	0	0	0	0
NEPRC	638	651	530	380	458	368	33	0	0
OCF MALE	48	0	0	0	0	0	0	0	0
OCF FEMALE	0	0	0	0	0	0	0	0	0
OCI	2,396	2,285	2,266	2,169	2,146	1,820	1,625	2,071	1,903
ORW	1,418	1,374	1,458	1,334	1,261	1,375	1,261	1,193	919
ORW MALES	249	241	0	0	0	0	0	0	0
OSR	0	0	0	0	1,128	2,359	2,339	2,738	2,680
PCI	1,890	2,028	1,972	1,542	1,712	1,420	1,393	1,242	1,250
RCI	2,834	2,687	2,506	2,278	2,108	1,688	1,475	313	0
SCI/SOTC	1,801	1,912	1,999	1,477	1,517	1,436	1,468	1,445	1,137
SOCF	1,160	1,073	1,832	1,552	2,202	2,107	2,106	2,412	2,376
TCI	955	940	0	0	0	0	0	0	0
WCI	1,578	1,462	1,432	1,324	1,087	146	90	0	0
TOTAL	40,784	39,396	37,116	33,353	31,862	28,076	24,750	23,289	21,621

FIGURE 11: INSTITUTION POPULATION TREND 1994-1986

