

## Year End Highlights

- ◆ During Fiscal Year 2009 funding was distributed in the following manner: \$38,014,458 for halfway house beds; \$1,237,483 for Transitional Control services; \$635,000 for permanent supportive housing; \$607,617 for independent housing beds; \$314,095 for Global Positioning Satellite (GPS) monitoring of Parole & Post-Release Control offenders and \$608,984 for the Cleveland Transition Center.

## FUTURE INITIATIVES

- ◆ Collaborate with the Urban Institute to conduct research on the effectiveness of the permanent supportive housing pilot program. Research will track participants in the program for two years after release from prison to compare recidivism rates to those not participating in the pilot program.
- ◆ Expand the Independent Housing program into Akron, providing additional beds for homeless offenders.
- ◆ Construct a reentry center on the grounds of the Chillicothe Correctional institution to provide halfway house and reentry services to offenders from Southeastern Ohio. The facility will also house the Chillicothe Adult Parole Authority.

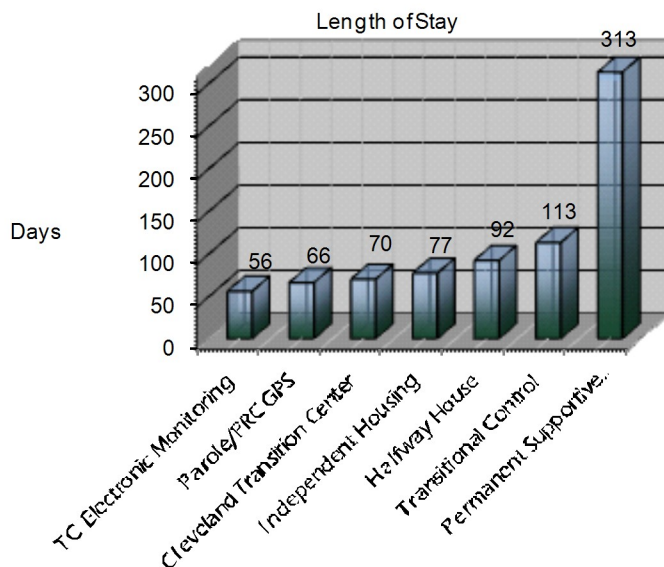
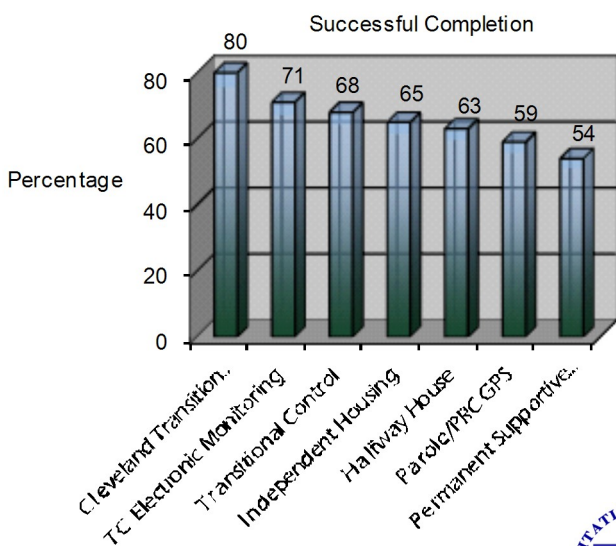
The total cost for all beds in FY 2009 was \$40,705,378 and the average per diem rates were \$61.67 for halfway houses; \$37.38 for Permanent Supportive Housing and \$33.13 for independent housing.

### FY 2009 Bed Distribution

APA Region	MALE	FEMALE	TOTAL
Akron	192	57	249
Chillicothe	128	0	128
Cincinnati	376	28	404
Cleveland	369	77	446
Columbus	259	56	315
Lima	136	24	160
Mansfield	112	0	112
<b>GRAND TOTAL</b>	1,572	242	1,814

### Year End Statistics:

- ◆ 7,108 offenders were admitted to state-contract halfway house programs; 2,332 of which were Transitional Control participants.
  - ◇ 33% of offenders were under Transitional Control supervision
  - ◇ 31% of offenders were under Parole/Post-Release Control supervision.
  - ◇ 36% of offenders were under Court of Common Pleas supervision.



## Halfway House Offender Information

### Halfway House Demographics

- ◆ 7,108 offenders participated (including TC)
  - 86% male
  - 90% unmarried
  - Average age 34 years
  - 53% Caucasian; 45% African-American
  - Average highest grade completed-11th

### Transitional Control Demographics

- ◆ 2,332 offenders participated
  - 92% male
  - 89% unmarried
  - Average age 33 years
  - 51% Caucasian; 46% African-American
  - Average highest grade completed-11th

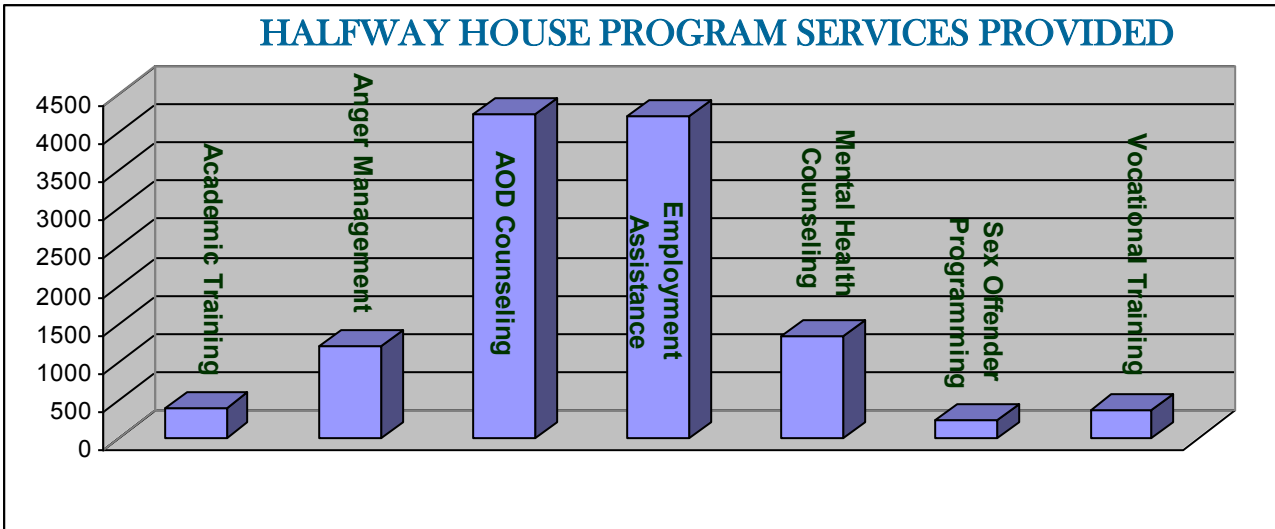
### Offense Information

- ◆ Instant Offense
  - 33% drug offenses;
  - 32% violent offenses;
  - 21% property offenses
  - 49% 1st, 2nd or 3rd degree felony offenses
- ◆ Offender History
  - 63% convicted of at least one prior felony
  - 18% convicted of five or more prior felonies

### Offense Information

- ◆ Instant Offense
  - 32% drug offenses;
  - 28% violent offenses;
  - 21% property offenses
  - 54% 1st, 2nd or 3rd degree felony offenses
- ◆ Offender History
  - 68% convicted of at least one prior felony
  - 16% convicted of five or more prior felonies

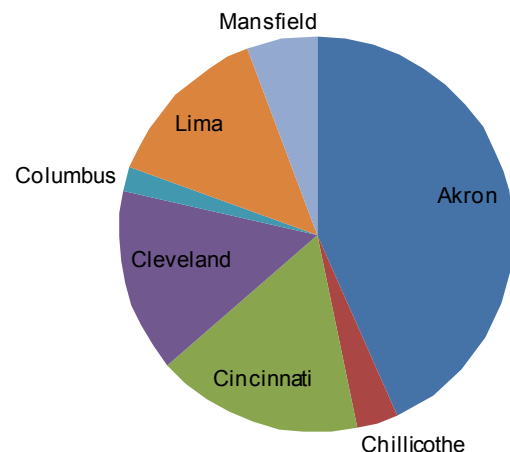
## HALFWAY HOUSE PROGRAM SERVICES PROVIDED



## Transitional Control and Electronic Monitoring

- ◆ The average length of stay in the Transitional Control program including time spent in a halfway house or on electronic monitoring was 123 days.
- ◆ 53% were employed full or part-time at the time of discharge from the Transitional Control program.
- ◆ Transitional Control offenders earned \$3,910,079; paid \$3,422 in restitution; \$25,649 in court costs; \$65,035 in child support and completed 21,477 community service hours.
- ◆ \$922,438 was paid by offenders into the Transitional Control rotary account.
- ◆ 621 offenders were monitored via Global Positioning Satellite or Electronic Monitoring. 367 of the offenders were under Parole/Post-Release Control supervision of the Adult Parole Authority; 254 of the offenders were Transitional Control participants stepped-down into home placements.

GPS Utilization by APA Region



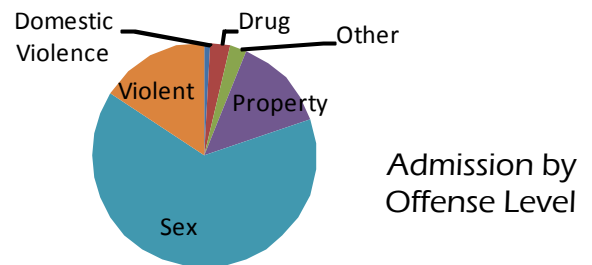
## *Residential Placement and Housing Services*

The Ohio Department of Rehabilitation and Correction (DRC) partners with Corporation for Supportive Housing to provide permanent supportive housing to prevent homelessness and reduce recidivism for individuals returning to Ohio communities. Participating programs in Fiscal Year 2009 were located in Cuyahoga, Franklin, Hamilton, Lucas and Montgomery counties. The program targets chronically homeless offenders in need of supportive services due to a mental illness, developmental disability, severe addiction or medical condition.

- ◆ 45 male and 6 female offenders entered supportive housing
- ◆ Average age at admission was 43 years old
- ◆ 75% of the participants were diagnosed as mentally ill ( 71% C1, 18% C2, 11% C3)
- ◆ 51% participants were supervised on Parole/PRC; 49% participants had no supervision requirements
- ◆ 75% convicted of at least one prior felony; 35% convicted of five or more prior felonies

The Bureau of Community Sanctions contracted for 54 Independent Housing beds in Columbus, Greenville and Lima during Fiscal Year 2009. Independent Housing serves homeless offenders under the supervision of the Adult Parole Authority. The program targets lower risk/lower need offenders or those who have successfully completed adequate programming in the institution and are stabilized.

- 240 male and 4 female offenders participated
- Average age at admission was 39 years old
- 47% convicted of at least one prior felony
- 9% convicted of five or more prior felonies



The Cleveland Transition Center (CTC) is a residential program developed in partnership with DRC, the City of Cleveland, and Oriana House, Inc. to meet the needs of Cleveland residents returning home from incarceration in a state institution. CTC provides offenders assistance in housing, employment, education, cognitive skills and chemical dependency treatment. The program targets offenders straight-released from prison back to Cleveland without any court or Adult Parole Authority supervision.

- ◆ 114 male and 23 female offenders participated
- ◆ Average age at admission was 40 years old; 77% African-American; 19% Caucasian
- ◆ 88% convicted of at least one prior felony; 56% convicted of five or more prior felonies
- ◆ 42% participants were supervised on Parole/PRC; 8% were supervised on Judicial Release; 50% participants had no supervision requirements
- ◆ Instant Offense at admission: 38% drug offenses; 39% violence offenses; 18% property offenses

### Year End Statistics:

- ◇ Received 2,389 placement requests for inmates with impending release dates; 61% of which were successfully placed
- ◇ Sex offenders were 29% of all referrals:
  - Tier III—430 (63%)
  - Tier II—188 (28%)
  - Tier I—64 (9%)
- ◇ Mentally ill offenders were 30% of all referrals:
  - C1 [Psychiatric Caseload—Seriously Mentally Ill (SMI)] - 384 (54%)
  - C2 [Psychiatric Caseload—Non-SMI] - 265 (37%)
  - C3 [General Caseload] - 62 (9%)

\*\*8% of referrals were both mentally ill and sex offenders\*\*

For additional information regarding Community Residential Services please contact:

Cynthia Ali, Assistant Chief—614-387-1456  
 Kara Peterson, Coordinator—614-752-1192  
 Michael Poggi, Coordinator—614-752-1195