



# Ohio Department of Rehabilitation and Correction

770 West Broad Street  
Columbus OH 43222

Ted Strickland, Gov.

[www.drc.ohio.gov](http://www.drc.ohio.gov)

Terry J. Collins, Director

**TO:** ALL CONCERNED

**FROM:** SENARATH DASSANAYAKA, SENIOR RESEARCHER  
BUREAU OF RESEARCH  
OFFICE OF POLICY

**DATE:** 3/16/2009

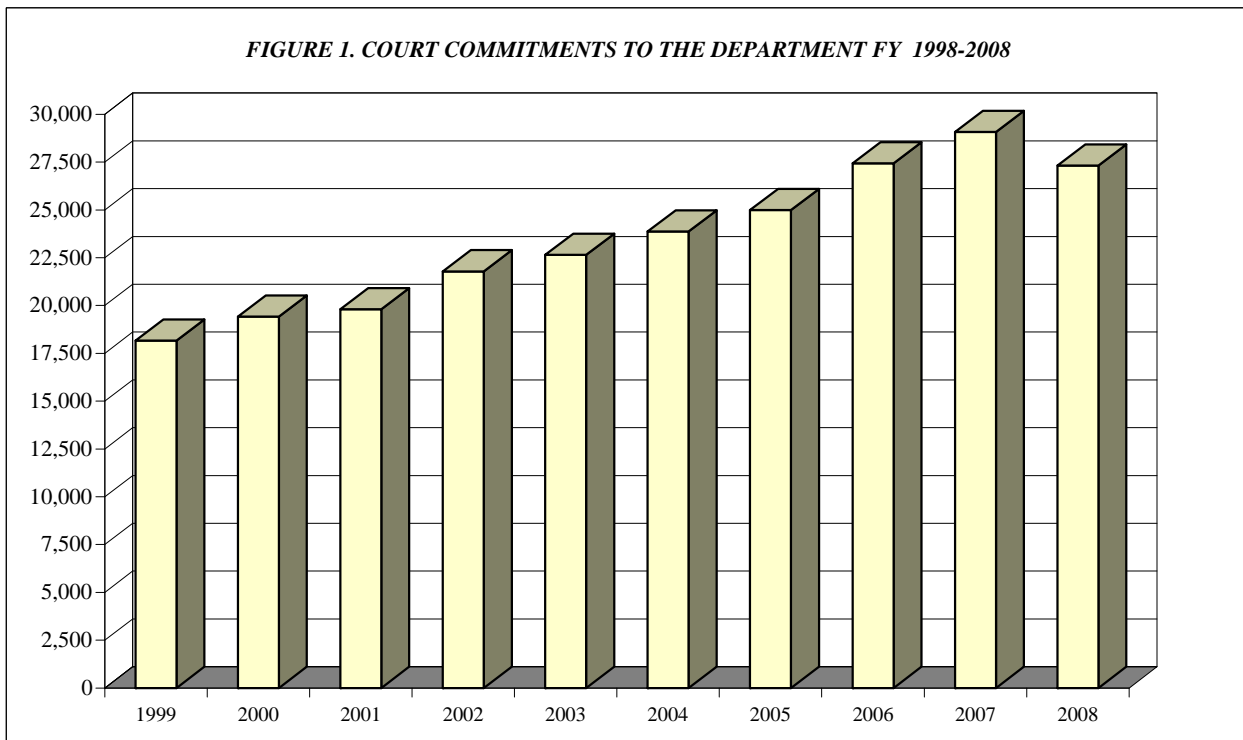
**SUBJECT:** FISCAL YEAR 2008 SUMMARY OF INSTITUTION STATISTICS

**TOTAL COURT COMMITMENTS TO THE OHIO DEPARTMENT OF REHABILITATION AND CORRECTION**

<b>OFFICIAL COMMITMENT TOTALS</b>			
CRC RECEPTION - MALE	13,756	MALE INTAKE	23,746
LORCI RECEPTION - MALE	9,990	FEMALE INTAKE	3,569
ORW RECEPTION - FEMALE	3,569	<b>TOTAL</b>	<b>27,315</b>
<b>TOTAL</b>	<b>27,315</b>		

<b>COURT COMMITMENTS TO THE DEPARTMENT FY 1998-2008</b>									
1999	2000	2001	2002	2003	2004	2005	2006	2007	2008
18,165	19,418	19,801	21,787	22,649	23,866	24,985	27,431	29,069	<b>27,315</b>

**FIGURE 1. COURT COMMITMENTS TO THE DEPARTMENT FY 1998-2008**

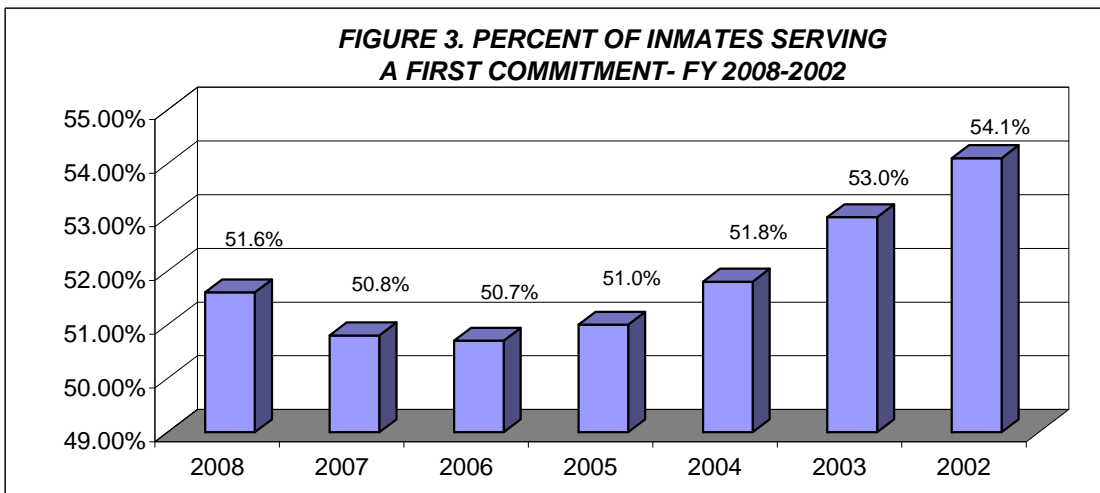
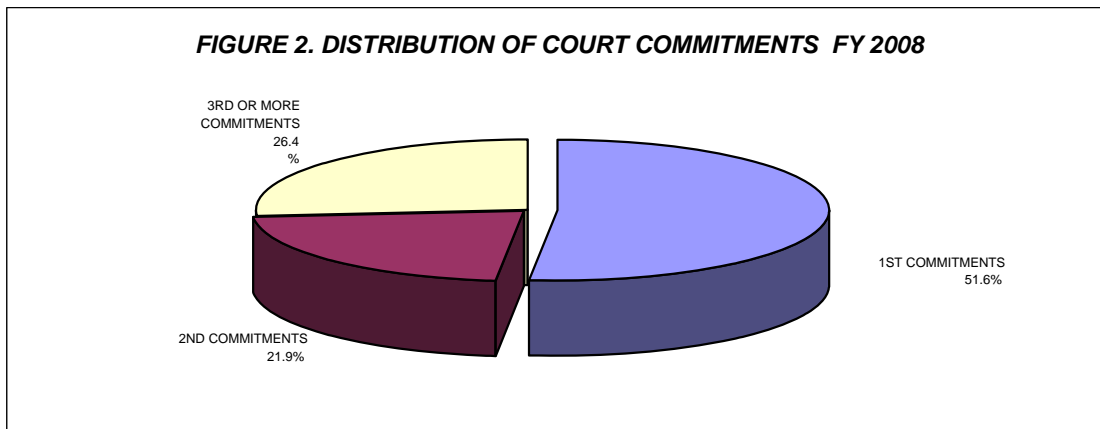


NUMBER OF COMMITMENTS TO THE DEPARTMENT								
FY 2008*	CRC MALE	LORCI MALE	MALE N	MALE %	ORW FEMALE	FEMALE %	TOTAL N	TOTAL %
1ST COMMITMENTS	7,178	4,462	11,640	49.0%	2462	69.0%	14,102	51.6%
2ND COMMITMENTS	3,097	2,305	5,402	22.7%	587	16.4%	5,989	21.9%
3RD OR MORE COMMIT.	3,481	3,223	6,704	28.2%	520	14.6%	7,224	26.4%
<b>TOTAL</b>	<b>13,756</b>	<b>9,990</b>	<b>23,746</b>	<b>100.0%</b>	<b>3,569</b>	<b>100.0%</b>	<b>27,315</b>	<b>100.0%</b>

NUMBER OF COMMITMENTS TO THE DEPARTMENT								
FY 2007*	CRC MALE	LORCI MALE	MALE N	MALE %	ORW FEMALE	FEMALE %	TOTAL N	TOTAL %
1ST COMMITMENTS	7,414	4,748	12,162	48.2%	2611	67.9%	14,773	50.8%
2ND COMMITMENTS	3,417	2,506	5,923	23.5%	677	17.6%	6,600	22.7%
3RD OR MORE COMMIT.	3,634	3,503	7,137	28.3%	559	14.5%	7,696	26.5%
<b>TOTAL</b>	<b>14,465</b>	<b>10,757</b>	<b>25,222</b>	<b>100.0%</b>	<b>3,847</b>	<b>100.0%</b>	<b>29,069</b>	<b>100.0%</b>

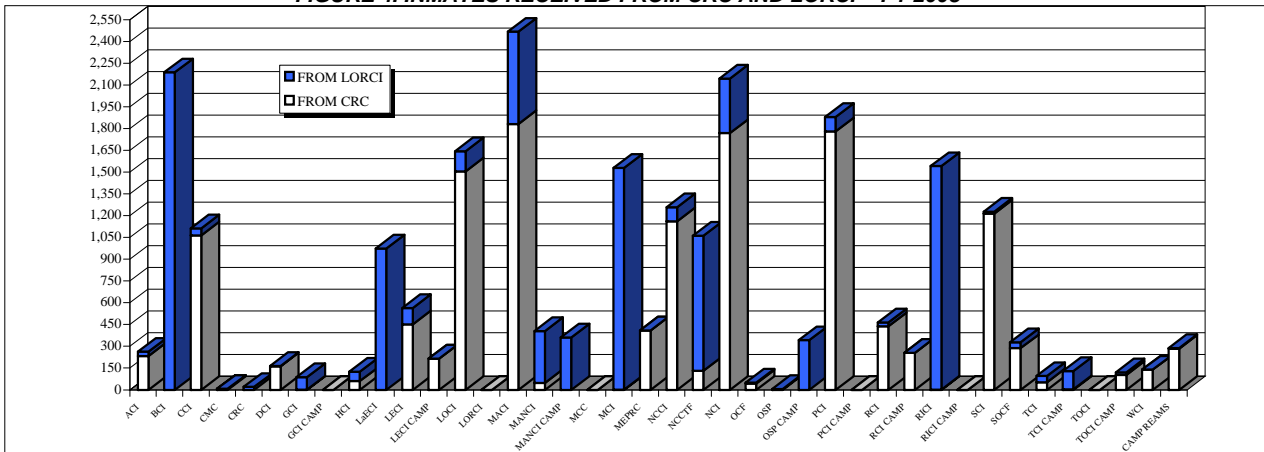
NUMBER OF COMMITMENTS TO THE DEPARTMENT								
FY 2006*	CRC MALE	LORCI MALE	MALE N	MALE %	ORW FEMALE	FEMALE %	TOTAL N	TOTAL %
1ST COMMITMENTS	6,902	4,694	11,596	46.0%	2325	66.3%	12,732	51.0%
2ND COMMITMENTS	3,051	2,386	5,437	21.6%	632	18.0%	5,602	22.4%
3RD OR MORE COMMIT.	3,471	3,422	6,893	27.3%	548	15.6%	6,651	26.6%
<b>TOTAL</b>	<b>13424</b>	<b>10502</b>	<b>23926</b>	<b>94.9%</b>	<b>3505</b>	<b>100.0%</b>	<b>24985</b>	<b>100.0%</b>

\* THIS TABLE IS PRODUCED FROM A DOTS SUMMARY OF PRIOR OHIO COMMITMENTS.



<b>INMATE TRANSFERS FROM MALE RECEPTION CENTERS</b>								
	<b>FROM CRC RECEPTION TO:</b>				<b>FROM LORCI RECEPTION TO:</b>			
	<b>2008</b>	<b>2007</b>	<b>2006</b>	<b>2005</b>	<b>2008</b>	<b>2007</b>	<b>2006</b>	<b>2005</b>
ACI	233	264	279	414	30	57	47	34
BCI	0	0	1	0	2188	2,223	2181	1598
CCI	1064	1,223	1178	1,144	49	22	43	55
CMC	5	7	3	2	2	3	3	4
CRC	0	0	0	0	20	24	22	44
DCI	162	202	108	100	2	2	3	0
GCI	1	0	2	4	86	101	183	198
GCI CAMP	0	0	0	3	0	0	50	114
HCF	60	90	77	0	65	78	65	72
LaECI	0	0	0	91	974	981	1110	913
LECI	451	256	507	350	113	11	56	34
LECI CAMP	216	268	358	186	0	0	0	0
LOCI	1505	1,356	1293	1,112	140	1	1	3
LORCI	0	0	0	1	0	13	22	0
MACI	1832	1,685	1848	1,675	636	623	598	553
MANCI	48	59	47	47	357	677	516	579
MANCI CAMP	0	0	5	0	361	252	241	321
MCC	0	0	64	0	0	1	314	364
MCI	1	4	122	1	1529	1,846	1058	1,178
MEPRC	409	435	423	448	0	0	0	0
NCCI	1161	1,236	990	1,187	98	64	137	79
NCCTF	132	124	54	83	930	890	1038	853
NCI	1769	2,195	2634	1,814	376	114	88	481
OCF	44	42	56	44	6	3	12	4
OSP	4	1	4	0	1	245	341	242
OSP CAMP	0	0	0	0	342	165	120	142
PCI	1781	1,844	1295	1,213	100	269	139	123
PCI CAMP	0	0	0	7	0	0	0	0
RCI	438	1,137	458	425	27	54	23	24
RCI CAMP	255	359	462	428	0	0	0	0
RICI	1	21	2	15	1541	1,691	1624	1,455
RICI CAMP	0	0	0	0	0	0	0	0
SCI	1214	1,415	1112	1,243	13	38	40	80
SCI CAMP	287	272	240	190	40	9	12	55
SOCF	52	69	38	26	43	44	24	10
TCI	3	7	3	4	126	204	157	149
TCI CAMP	0	5	8	0	0	0	0	82
TOCI	103	120	70	91	18	150	9	18
TOCI CAMP	139	153	172	139	0	0	0	0
WCI	283	290	144	93	5	9	6	19
<b>TOTAL</b>	<b>13653</b>	<b>15,139</b>	<b>14057</b>	<b>12,580</b>	<b>10218</b>	<b>10,864</b>	<b>10,283</b>	<b>9,880</b>

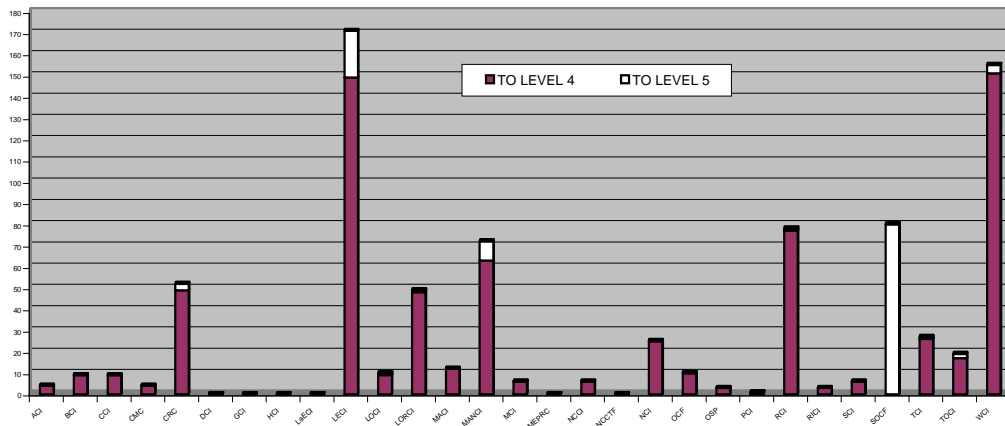
**FIGURE 4. INMATES RECEIVED FROM CRC AND LORCI - FY 2008**



**DISCIPLINARY AND ADMINISTRATIVE TRANSFERS**

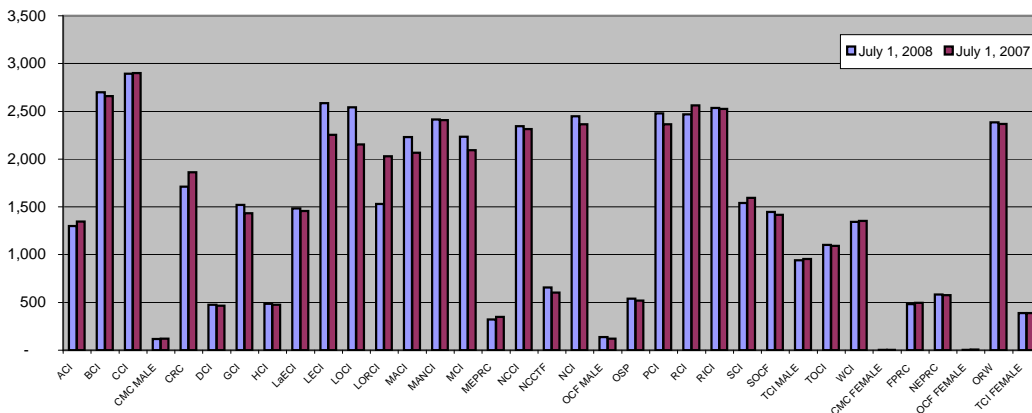
	FROM LESSER CUSTODY TO:				FROM HIGHER TO LESSER CUSTODY			
	LEVEL 5 (OSP)		LEVEL 4 (SOCF)		LEVEL 5 (OSP)		LEVEL 4 (SOCF)	
	2008	2007	2008	2007	2008	2007	2008	2007
ACI	0	0	4	11	0	0	2	0
BCI	0	0	9	10	0	0	4	4
CCI	0	0	9	4	0	0	3	0
CMC	0	0	4	1	1	0	0	4
CRC	3	0	49	72	2	1	6	23
DCI	0	0	0	0	0	0	0	0
GCI	0	0	0	1	0	0	0	0
HCF	0	0	0	0	0	0	0	0
LaECI	0	0	0	0	0	0	0	0
LECI	22	9	149	165	17	10	100	88
LOCI	1	0	9	19	0	1	3	6
LORCI	1	2	48	52	0	0	0	1
MACI	0	1	12	18	0	0	4	3
MANCI	9	5	63	86	3	21	28	43
MCI	0	1	6	20	0	0	0	2
MEPRC	0	0	0	0	0	0	0	0
NCCI	0	0	6	6	0	0	1	1
NCCTF	0	0	0	0	0	0	0	0
NCI	0	0	25	11	1	0	11	8
OCF	0	0	10	31	1	2	18	32
OSP	0	0	3	0	0	0	0	0
PCI	1	0	0	0	0	0	0	1
RCI	1	0	77	66	1	2	52	29
RICI	0	0	3	4	0	1	1	1
SCI	0	0	6	7	0	0	4	5
SOCF	80	84	0	0	48	47	0	0
TCI	1	0	26	31	10	3	17	9
TOCI	2	0	17	54	4	5	8	19
WCI	4	7	151	176	6	6	105	106
<b>TOTAL</b>	<b>125</b>	<b>109</b>	<b>686</b>	<b>845</b>	<b>94</b>	<b>99</b>	<b>367</b>	<b>385</b>

**FIGURE 5. TRANSFERS TO LEVEL 5 AND LEVEL 4 - FY 2008**



<b>INSTITUTION POPULATION TREND (PREVIOUS YEAR COMPARISON)</b>					
		<b>7/1/2008</b>	<b>7/1/2007</b>	<b>DIFFERENCE</b>	
ACI	(Allen Correctional Institution)	1,300	1,348	-48	-3.6%
BCI	(Belmont Correctional Institution)	2,700	2,659	41	1.5%
CCI	(Chillicothe Correctional Institution)	2,893	2,901	-8	-0.3%
CMC MALE	(Correctional Medical Center)	117	119	-2	-1.7%
CRC	(Correctional Reception Center)	1,712	1,863	-151	-8.1%
DCI	(Dayton Correctional Institution)	476	464	12	2.6%
GCI	(Grafton Correctional Institution)	1,522	1,435	87	6.1%
HCI	(Hocking Correctional Institution)	484	475	9	1.9%
LaECI	(Lake Erie Correctional Institution)	1,483	1,457	26	1.8%
LECI	(Lebanon Correctional Institution)	2,587	2,253	334	14.8%
LOCI	(London Correctional Institution)	2,542	2,153	389	18.1%
LORCI	(Lorain Correctional Institution)	1,531	2,028	-497	-24.5%
MACI	(Madison Correctional Institution)	2,232	2,067	165	8.0%
MANCI	(Mansfield Correctional Institution)	2,414	2,407	7	0.3%
MCI	(Marion Correctional Institution)	2,234	2,093	141	6.7%
MEPRC	(Montgomery Education & Pre-Release Center)	321	347	-26	-7.5%
NCCI	(North Central Correctional Institution)	2,343	2,313	30	1.3%
NCCTF	(North Coast Correctional Treatment Facility)	658	602	56	9.3%
NCI	(Noble Correctional Institution)	2,448	2,364	84	3.6%
OCF MALE	(Oakwood Correctional Facility)	137	121	16	13.2%
OSP	(Ohio State Penitentiary)	538	519	19	3.7%
PCI	(Pickaway Correctional Institution)	2,478	2,363	115	4.9%
RCI	(Ross Correctional Institution)	2,467	2,563	-96	-3.7%
RICI	(Richland Correctional Institution)	2,534	2,524	10	0.4%
SCI	(Southeastern Correctional Institution)	1,540	1,595	-55	-3.4%
SOCF	(Southern Ohio Correctional Facility)	1,448	1,417	31	2.2%
TCI	(Trumbull Correctional Institution)	940	956	-16	-1.7%
TOCI	(Toledo Correctional Institution)	1,102	1,092	10	0.9%
WCI	(Warren Correctional Institution)	1,342	1,353	-11	-0.8%
<b>MALE TOTAL</b>		<b>46,523</b>	<b>45,851</b>	<b>672</b>	<b>1.5%</b>
CMC FEMALE	(Correctional Medical Center)	3	4	-1	-25.0%
FPRC	(Franklin Pre-Release Center)	482	495	-13	-2.6%
NEPRC	(Northeast Pre-Release Center)	583	577	6	1.0%
OCF FEMALE	(Oakwood Correctional Facility)	4	7	-3	-42.9%
ORW	(Ohio Reformatory for Women)	2,386	2,369	17	0.7%
TCI FEMALE	(Trumbull Correctional Institution)	390	388	2	0.5%
<b>FEMALE TOTAL</b>		<b>3,848</b>	<b>3,840</b>	<b>8</b>	<b>0.2%</b>
<b>COMBINED MALE / FEMALE TOTAL</b>		<b>50,371</b>	<b>49,691</b>	<b>680</b>	<b>1.4%</b>

**FIGURE 6. COMPARISON OF INSTITUTION POPULATION COUNT ON 7/1/07 and & 7/1/08**



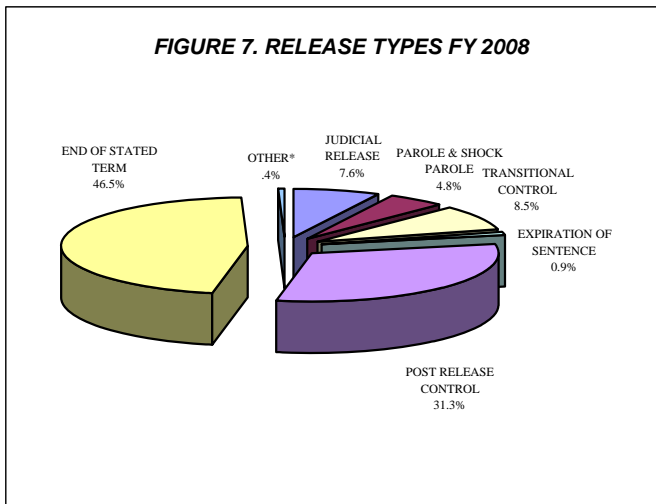
**RELEASES AND RETURNS:**

<b>INSTITUTIONAL STATISTICS</b>					
	<b>FY 2008</b>	<b>FY 2008</b>	<b>FY 2008</b>	<b>FY 2007</b>	<b>FY 2006</b>
	<b>MALE</b>	<b>FEMALE</b>	<b>TOTAL</b>	<b>TOTAL</b>	<b>TOTAL</b>
<b>RELEASED BY:</b>					
SUSPENDED SENTENCE	0	0	0	14	18
VACATED SENTENCE	2	0	2	8	6
REGULAR PAROLE	1344	47	1391	1814	2,253
SHOCK PAROLE	0	0	0	1	0
JUDICIAL RELEASE	1649	543	2192	1893	1,797
POST RELEASE CONTROL	7935	1084	9019	8497	7,944
TRANSITIONAL CONTROL	2253	207	2460	2287	2,297
EXPIRATION OF SENTENCE	251	2	253	288	494
END OF STATED TERM	11627	1779	13406	13269	12,833
APPEALS BOND	20	5	25	18	18
ESCAPES (from the Office of Prisons)	1	0	1	0	3
DEATHS (from the Bureau of Medical Services)	96	2	98	130	113
<b>TOTAL RELEASED</b>	<b>25178</b>	<b>3669</b>	<b>28847</b>	28219	27,776
<b>RETURNED BY:</b>					
PAROLE VIOLATION (TECH.) <sup>1</sup>	402	8	410	567	622
JUDICIAL RELEASE VIOLATION	741	124	865	912	848
POST RELEASE CONTROL VIOLATION <sup>1</sup>	1339	89	1428	1420	1,598
TRANSITIONAL CONTROL VIOLATION	171	27	198	165	245
REACTIVATED SUSPENDED SENTENCE	5	0	5	8	14
ESCAPES RETURNED	0	0	0	2	3
APPEALS BOND	15	1	16	13	14
<b>TOTAL RETURNED</b>	<b>2673</b>	<b>249</b>	<b>2922</b>	3,087	3,344

<sup>1</sup> Numbers from DOTS. PRC and Parole offenders being held at reception prior to a violation hearing have caused errors in the monthly report totals, so monthly totals are not summed for this report.

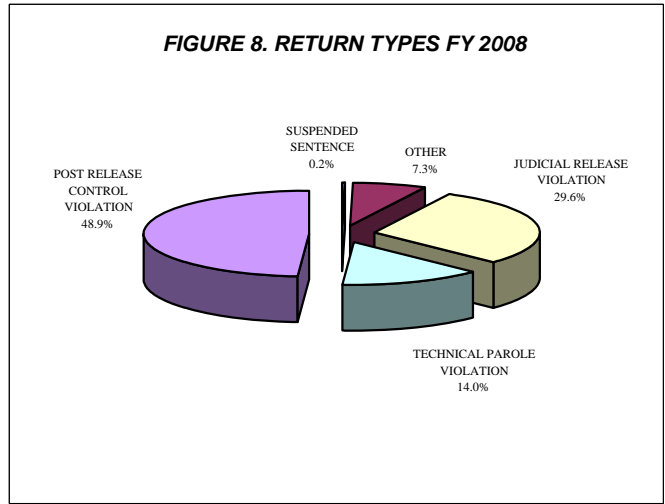
<b>PAROLE VIOLATORS RECOMMISSIONED<sup>2</sup></b>	494	14	508	612	771
<b>PRC FELONY VIOLATOR<sup>2</sup></b>	616	21	637	722	852

<sup>2</sup> PVR and PRC Felony Violator numbers from DOTS.



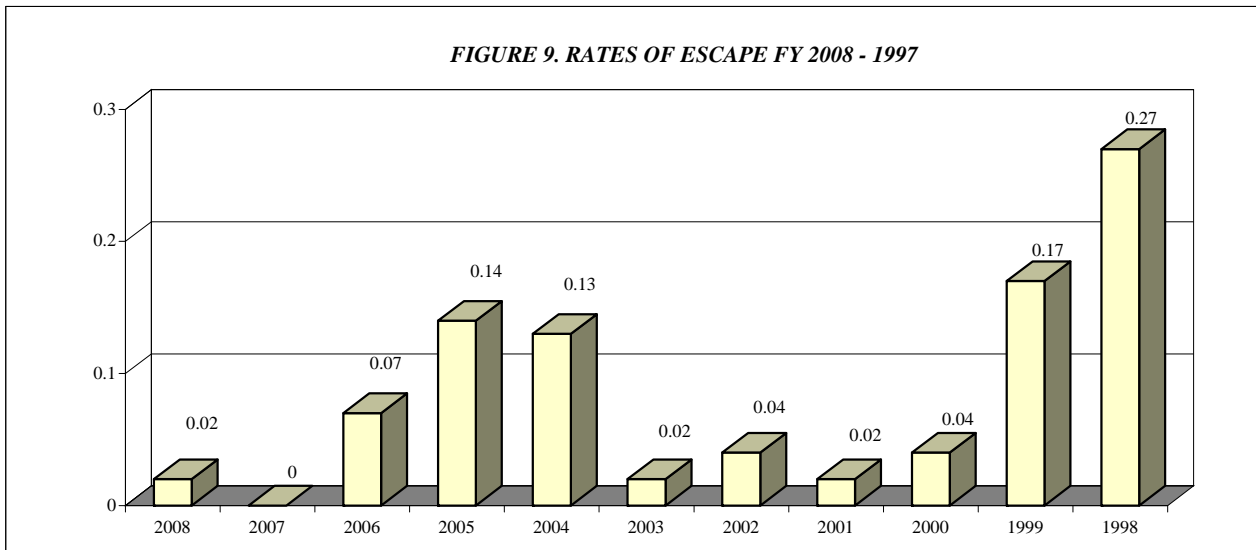
\*Other includes the following releases: vacated sentence, appeals bond, escapes and deaths.

\*\*Includes offenders released on suspended sentence.



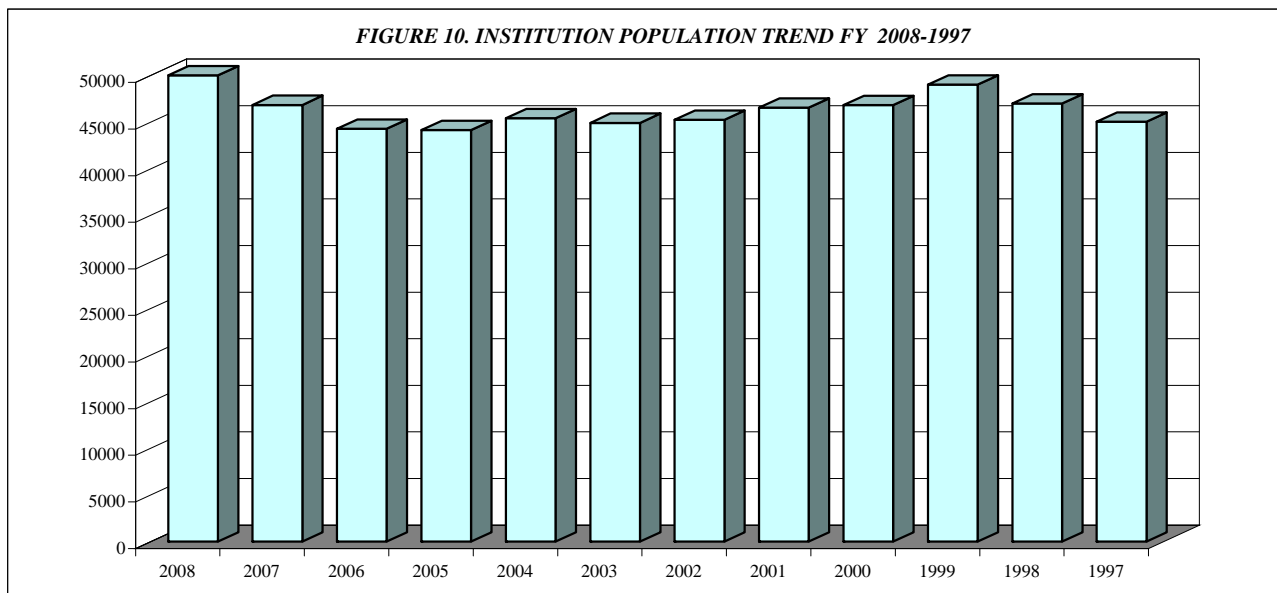
\*\*\*Other includes returns for the following: transitional control violation, return from appeals bond and captured escapes.

<b>ESCAPES AND RATES OF ESCAPE</b>											
	2008	2007	2006	2005	2004	2003	2002	2001	2000	1999	1998
ACI	0	0	0	0	0	0	0	0	0	0	2
BCI	0	0	0	0	0	0	0	0	0	0	0
CCI	0	0	0	0	0	0	0	0	0	2	0
CMC	0	0	0	0	0	0	0	0	0	0	0
CRC	0	0	0	0	0	0	0	0	0	0	0
DCI	0	0	0	1	0	0	0	0	0	0	0
FPRC	0	0	0	0	0	0	0	0	0	0	0
GCI	0	0	0	0	0	1	0	1	0	1	1
HCI	0	0	0	0	0	0	0	0	0	0	0
LaECI	0	0	0	0	0	0	0	0	0	0	0
LCI	0	0	0	0	0	0	0	0	0	0	0
LECI	0	0	1	0	0	0	1	0	0	0	0
LOCI	0	0	0	0	0	0	0	0	1	0	2
LORCI	0	0	0	0	0	0	0	0	0	0	0
MACI	0	0	0	0	0	0	0	0	0	1	0
MANCI	0	0	0	1	1	0	0	0	0	1	2
MCI	0	0	0	0	0	0	0	0	0	0	1
MEPRC	0	0	0	1	0	0	0	0	0	0	0
NEPRC	0	0	0	0	0	0	0	0	0	0	0
NCCI	0	0	0	0	0	0	0	0	0	0	0
NCCTF	0	0	0	0	0	0	0	0	0	0	0
NCI	0	0	0	0	0	0	0	0	0	0	0
OCF	0	0	0	0	0	0	0	0	0	0	0
OCI	0	0	0	0	0	0	0	0	0	0	0
ORW	0	0	0	0	0	0	0	0	0	0	0
OSP	0	0	0	1	0	0	0	0	0	0	0
PCI	0	0	2	0	3	0	0	0	1	1	1
RCI	0	0	0	2	1	0	0	0	0	1	2
RICI	0	0	0	0	0	0	0	0	0	0	0
SCI	1	0	0	0	1	0	1	0	0	1	2
SOCF	0	0	0	0	0	0	0	0	0	0	0
TCI	0	0	0	0	0	0	0	0	0	0	0
TOCI	0	0	0	0	0	0	0	0	0	0	0
WCI	0	0	0	0	0	0	0	0	0	0	0
<b>TOTAL</b>	<b>1</b>	<b>0</b>	<b>3</b>	<b>6</b>	<b>6</b>	<b>1</b>	<b>2</b>	<b>1</b>	<b>2</b>	<b>8</b>	<b>13</b>
<b>AVG. SYSTEM POPULATION FOR YEAR</b>	<b>49926</b>	<b>48415</b>	<b>45203</b>	<b>44,026</b>	<b>44,527</b>	<b>45,175</b>	<b>44,980</b>	<b>45,609</b>	<b>46,690</b>	<b>47,988</b>	<b>47,899</b>
<b>RATE OF ESCAPE PER 1000 INMATES</b>	<b>0.02</b>	<b>0.00</b>	<b>0.07</b>	<b>0.14</b>	<b>0.13</b>	<b>0.02</b>	<b>0.04</b>	<b>0.02</b>	<b>0.04</b>	<b>0.17</b>	<b>0.27</b>



**INSTITUTION POPULATION TRENDS:**

<b>END OF THE YEAR INSTITUTIONAL POPULATION TREND FOR JULY 1, 2007 THROUGH JULY 1, 1997</b>												
	<b>2008</b>	<b>2007</b>	<b>2006</b>	<b>2005</b>	<b>2004</b>	<b>2003</b>	<b>2002</b>	<b>2001</b>	<b>2000</b>	<b>1999</b>	<b>1998</b>	<b>1997</b>
ACI	1300	1,326	1,320	1,282	1,227	1,173	1,152	1,328	1,401	1,421	1,375	1,294
BCI	2700	2,507	2,184	2,148	2,120	2,080	2,040	1,901	2,423	2,650	2,355	2,252
CCI	2893	2,861	2,751	2,655	2,579	2,264	2,246	2,195	2,448	2,854	2,628	2,582
CMC MALE	117	112	98	110	106	101	99	146	132	146	135	153
CMC FEMALE	3	5	10	4	6	2	5	2	3	5	5	8
CRC	1712	1,860	1,751	1,602	1,916	1,858	1,558	1,733	1,667	2,304	2,155	2,142
DCI	476	413	410	412	459	474	472	473	474	483	486	485
FPRC	482	482	484	460	457	468	468	438	459	474	479	490
GCI	1522	1,433	1,405	1,424	1,346	1,334	1,342	1,450	1,593	1,699	1,635	1,621
HCF	484	468	464	460	447	423	408	417	436	447	433	440
LaECI	1483	1,476	1,378	1,373	1,388	1,369	1,362	999	0	0	0	0
LCI	0	0	0	0	496	1,566	1,485	1,549	1,650	1,937	1,990	2,125
LECI	2587	2232	1,963	1,952	1,728	1,625	1,680	1,875	2,192	2,307	2,225	2,103
LOCI	2542	2189	2,047	2,054	2,027	2,009	2,069	1,915	1,857	1,946	1,904	2,350
LORCI	1531	1923	1,479	1,298	1,954	1,632	1,443	1,548	1,676	2,116	2,041	1,993
MACI	2232	2056	1,957	2,056	2,110	2,063	2,009	2,093	2,471	2,601	2,483	2,552
MANCI	2414	2260	2,378	2,353	2,373	2,276	2,109	2,319	2,671	2,696	2,655	2,588
MCI	2234	1922	1,787	1,663	1,712	1,705	1,837	1,782	1,911	2,222	2,144	2,087
MEPRC	321	347	345	319	328	327	262	328	322	347	331	349
NEPRC	583	582	532	577	600	631	495	590	583	634	638	631
NCCI	2343	2275	2,303	2,240	2,199	2,080	1,955	2,145	2,280	2,312	2,226	2,252
NCCTF	658	604	546	530	533	567	554	549	0	0	0	0
NCI	2448	2346	2,103	2,149	1,964	1,854	1,850	2,014	2,054	2,397	2,128	0
OCF MALE	137	108	119	114	131	165	175	130	156	141	150	145
OCF FEMALE	4	3	3	1	0	8	5	8	9	5	0	0
OCI	0	0	0	0	0	0	1,743	1,920	1,935	2,038	2,056	2,242
ORW	2386	2,023	1,857	1,969	1,827	1,765	1,726	1,807	1,802	1,780	1,716	1,673
ORW MALES	0	0	0	0	0	0	0	0	0	0	0	0
OSP	538	535	466	460	505	508	558	610	616	285	0	0
PCI	2478	2043	1,960	2,152	2,251	2,057	1,815	1,903	1,920	1,959	1,950	1,956
RCI	2467	2294	2,261	2,228	2,333	2,114	2,224	2,359	2,508	2,751	2,771	2,731
RICI	2534	2411	2,291	2,273	2,238	2,271	2,043	2,183	1,238	0	0	0
SCI	1540	1467	1,583	1,636	1,563	1,434	1,332	1,718	1,677	1,769	1,743	1,755
SOCF	1448	1141	984	978	1,230	1,399	1,438	1,409	1,436	1,481	1,410	1,176
TCI MALE	940	956	963	1,365	1,396	1,429	1,395	1,411	1,429	1,457	1,442	1,389
TCI FEMALE	390	358	254	0	0	0	0	0	0	0	0	0
TOCI	1102	803	787	789	797	766	696	0	0	0	0	0
WCI	1342	1,018	1,047	1,048	1,056	1,120	1,194	1,290	1,377	1,365	1,306	1,472
<b>TOTAL</b>	<b>50,371</b>	<b>46,839</b>	<b>44,270</b>	<b>44,134</b>	<b>45,402</b>	<b>44,917</b>	<b>45,244</b>	<b>46,537</b>	<b>46,806</b>	<b>49,029</b>	<b>46,995</b>	<b>45,036</b>





<b>END OF THE YEAR INSTITUTIONAL POPULATION TREND FOR JULY 1, 1994 THROUGH JULY 1, 1986</b>											
	<b>1996</b>	<b>1995</b>	<b>1994</b>	<b>1993</b>	<b>1992</b>	<b>1991</b>	<b>1990</b>	<b>1989</b>	<b>1988</b>	<b>1987</b>	<b>1986</b>
ACI	1294	1404	1,417	1,171	1,111	979	917	753	644	59	0
BCI	2252	283	0	0	0	0	0	0	0	0	0
CCI	2582	2620	2,791	2,794	2,625	2,456	2,325	2,064	1,864	2,975	2,935
CLEV. P.R.	0	0	0	0	0	0	0	0	49	41	0
CMC MALE	153	147	148	0	0	0	0	0	0	0	0
CMC FEMALE	8	5	0	0	0	0	0	0	0	0	0
CRC	2142	2240	2,182	2,331	2,198	2,009	1,683	1,534	1,005	0	0
DCI	485	484	481	493	480	468	467	480	456	464	0
FPRC	490	471	456	428	364	356	344	322	0	0	0
GCI	1621	1575	1,620	1,317	1,307	1,121	1,054	793	0	0	0
HCI/HCF	440	435	449	441	397	405	328	317	322	323	323
LaECI	0	0	0	0	0	0	0	0	0	0	0
LCI	2125	1926	1,897	1,974	1,923	1,878	1,840	1,702	1,611	1,721	1,704
LECI	2103	2188	2,202	2,192	1,911	1,942	1,937	1,939	1,868	1,851	2,095
LOCI	2350	2311	2,366	2,426	2,459	2,281	2,172	2,086	1,864	2,211	2,178
LORCI	1993	2071	2,337	2,313	2,163	1,886	1,520	0	0	0	0
MACI	2552	2589	2,599	2,111	2,088	1,898	1,705	1,416	1,313	68	0
MANCI	2588	2230	2,380	2,542	2,306	1,830	0	0	0	0	0
MCI	2087	2224	2,284	2,210	1,789	1,788	1,951	1,951	1,964	2,162	2,121
MEPRC	349	342	208	0	0	0	0	0	0	0	0
NEPRC	631	655	638	651	530	380	458	368	33	0	0
NCCI	2252	2262	0	0	0	0	0	0	0	0	0
NCCTF	0	0	0	0	0	0	0	0	0	0	0
NCI	0	0	0	0	0	0	0	0	0	0	0
OCF MALE	145	211	48	0	0	0	0	0	0	0	0
OCF FEMALE	0	0	0	0	0	0	0	0	0	0	0
OCI	2242	2430	2,396	2,285	2,266	2,169	2,146	1,820	1,625	2,071	1,903
ORW	1673	1531	1,418	1,374	1,458	1,334	1,261	1,375	1,261	1,193	919
ORW MALES	0	190	249	241	0	0	0	0	0	0	0
OSP	0	0	0	0	0	0	1,128	2,359	2,339	2,738	2,680
PCI	1956	1906	1,890	2,028	1,972	1,542	1,712	1,420	1,393	1,242	1,250
RCI	2731	2828	2,834	2,687	2,506	2,278	2,108	1,688	1,475	313	0
RICI	0	0	0	0	0	0	0	0	0	0	0
SCI/SOTC	1755	1797	1,801	1,912	1,999	1,477	1,517	1,436	1,468	1,445	1,137
SOCF	1176	1009	1,160	1,073	1,832	1,552	2,202	2,107	2,106	2,412	2,376
TCI	1389	1272	955	940	0	0	0	0	0	0	0
TCI FEMALE	0	0	0	0	0	0	0	0	0	0	0
TOCI	0	0	0	0	0	0	0	0	0	0	0
WCI	1472	1522	1,578	1,462	1,432	1,324	1,087	146	90	0	0
<b>TOTAL</b>	<b>45,036</b>	<b>43,158</b>	<b>40,784</b>	<b>39,396</b>	<b>37,116</b>	<b>33,353</b>	<b>31,862</b>	<b>28,076</b>	<b>24,750</b>	<b>23,289</b>	<b>21,621</b>

**FIGURE 11: INSTITUTION POPULATION TREND 1996-1986**

