



# Ohio Department of Rehabilitation and Correction

1050 Freeway Drive North  
Columbus, Ohio 43229

Bob Taft, Governor

[www.drc.state.oh.us](http://www.drc.state.oh.us)

Reginald A. Wilkinson, Director

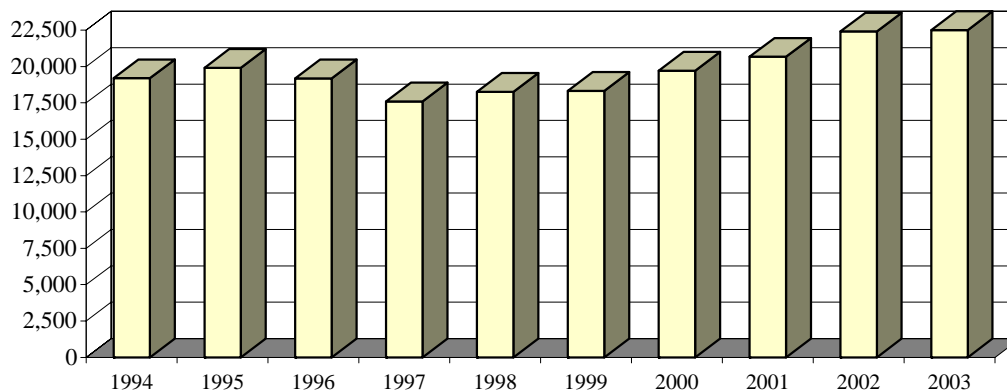
**TO:** ALL CONCERNED  
**FROM:** CORETTA PETTWAY & SENARATH DASSANAYAKA, RESEARCHERS  
 BUREAU OF RESEARCH  
 OFFICE OF POLICY  
**DATE:** 7/24/2004  
**SUBJECT:** CALENDAR YEAR 2003 SUMMARY OF INSTITUTION STATISTICS

**TOTAL COURT COMMITMENTS TO THE OHIO DEPARTMENT OF REHABILITATION AND CORRECTION:**

<b>OFFICIAL COMMITMENT TOTALS</b>			
CRC RECEPTION - MALE	11,126	MALE INTAKE	20,464
LORCI RECEPTION - MALE	9,139	FEMALE INTAKE	2,662
ORW RECEPTION - FEMALE	2,662	<b>TOTAL</b>	<b>23,126</b>
RECEIVED AT OTHER INSTITUTIONS	199		
<b>TOTAL</b>	<b>23,126</b>		

<b>COURT COMMITMENTS TO THE DEPARTMENT CY 1994-2003</b>									
1994	1995	1996	1997	1998	1999	2000	2001	2002	2003
19,198	19,915	19,184	17,600	18,252	18,325	19,721	20,669	22,411	23,126

**FIGURE 1. COURT COMMITMENTS TO THE DEPARTMENT CY 1994-2003**



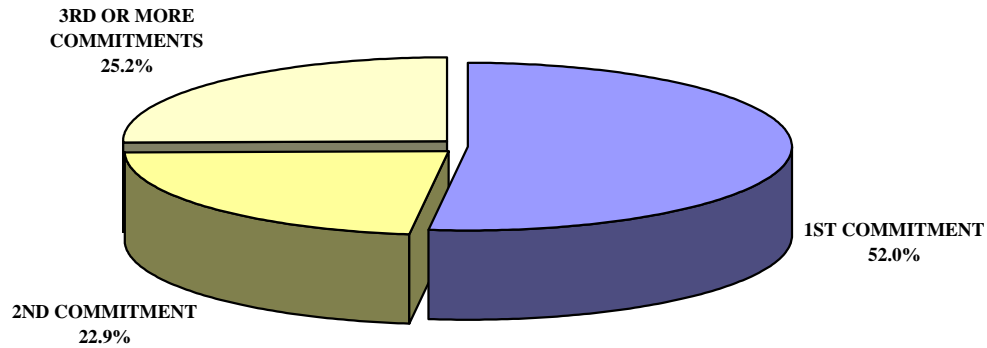
<b>NUMBER OF COMMITMENTS TO THE DEPARTMENT**</b>								
<b>CY 2003*</b>	<b>CRC MALE</b>	<b>LORCI MALE</b>	<b>MALE N</b>	<b>MALE %</b>	<b>ORW FEMALE</b>	<b>FEMALE %</b>	<b>TOTAL N</b>	<b>TOTAL %</b>
1ST COMMITMENT	5,846	4,412	10,258	50.1%	1,757	66.0%	12,015	52.0%
2ND COMMITMENT	2,612	2,232	4,844	23.7%	443	16.6%	5,287	22.9%
3 OR MORE COMMITMENTS	2,704	2,658	5,362	26.2%	462	17.4%	5,824	25.2%
<b>TOTAL</b>	<b>11,162</b>	<b>9,302</b>	<b>20,464</b>	<b>100.0%</b>	<b>2,662</b>	<b>100.0%</b>	<b>23,126</b>	<b>100.0%</b>

<b>NUMBER OF COMMITMENTS TO THE DEPARTMENT</b>								
<b>CY 2002*</b>	<b>CRC MALE</b>	<b>LORCI MALE</b>	<b>MALE N</b>	<b>MALE %</b>	<b>ORW FEMALE</b>	<b>FEMALE %</b>	<b>TOTAL N</b>	<b>TOTAL %</b>
1ST COMMITMENT	5,800	4,622	10,422	52.5%	1,702	66.5%	12,124	54.1%
2ND COMMITMENT	2,308	2,146	4,454	22.4%	435	17.0%	4,889	21.8%
3 OR MORE COMMITMENTS	2,355	2,619	4,974	25.1%	424	16.6%	5,398	24.1%
<b>TOTAL</b>	<b>10,463</b>	<b>9,387</b>	<b>19,850</b>	<b>100.0%</b>	<b>2,561</b>	<b>100.0%</b>	<b>22,411</b>	<b>100.0%</b>

<b>NUMBER OF COMMITMENTS TO THE DEPARTMENT</b>								
<b>CY 2001*</b>	<b>CRC MALE</b>	<b>LORCI MALE</b>	<b>MALE N</b>	<b>MALE %</b>	<b>ORW FEMALE</b>	<b>FEMALE %</b>	<b>TOTAL N</b>	<b>TOTAL %</b>
1ST COMMITMENT	5,344	4,297	9,641	52.9%	1,569	64.2%	11,210	54.2%
2ND COMMITMENT	2,035	2,065	4,100	22.5%	438	17.9%	4,538	22.0%
3 OR MORE COMMITMENTS	2,099	2,385	4,484	24.6%	437	17.9%	4,921	23.8%
<b>TOTAL</b>	<b>9,478</b>	<b>8,747</b>	<b>18,225</b>	<b>100.0%</b>	<b>2,444</b>	<b>100.0%</b>	<b>20,669</b>	<b>100.0%</b>

\* THIS TABLE IS PRODUCED FROM A DOTS SUMMARY OF PRIOR OHIO COMMITMENTS.  
 \*\* Percentages may not total 100 due to rounding

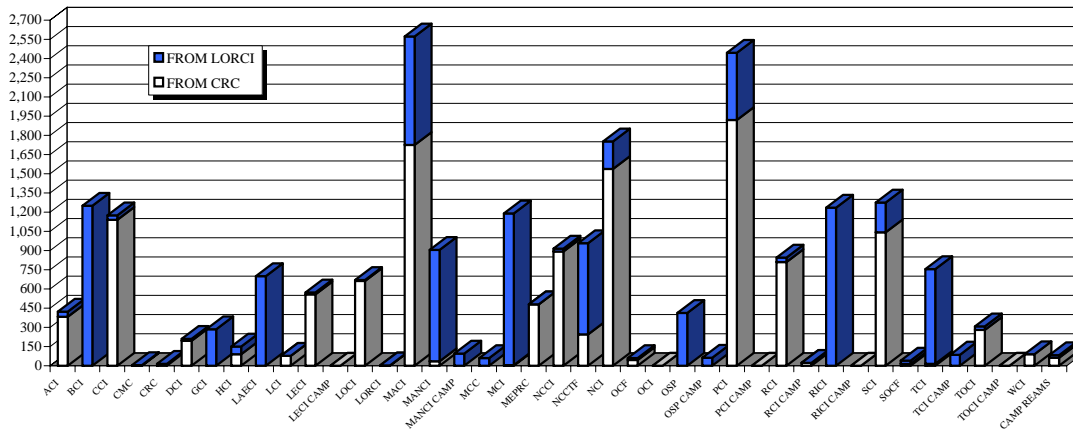
**FIGURE 2. DISTRIBUTION OF COURT COMMITMENTS CY 2003**



**INMATE TRANSFERS FROM MALE RECEPTION CENTERS**

	FROM CRC RECEPTION TO:				FROM LORCI RECEPTION TO:			
	2003	2002	2001	2000	2003	2002	2001	2000
ACI	383	297	147	114	39	32	29	8
BCI	1	1	2	1	1,249	1,104	1,122	945
CCI	1,140	523	465	419	36	48	24	8
CMC	3	28	3	9	1	12	3	8
CRC	0	0	0	0	16	27	18	24
DCI	196	277	252	222	13	3	0	0
GCI	0	43	22	8	286	106	65	29
HCI	91	70	63	38	59	45	46	59
LAECI	0	9	48	0	701	720	653	884
LCI	77	756	748	622	0	15	37	69
LECI	558	477	313	326	15	8	7	18
LECI CAMP	0	40	181	0	0	0	0	0
LOCI	662	629	708	736	7	4	3	9
LORCI	3	11	12	12	0	0	6	56
MACI	1,724	1,228	1,298	1,076	848	679	722	778
MANCI	34	64	71	6	870	571	334	167
MANCI CAMP	1	3	1	0	94	275	385	283
MCC	0	0	0	1	60	352	330	380
MCI	4	8	7	2	1,187	603	736	541
MEPRC	480	504	485	476	0	1	32	30
NCCI	892	366	342	217	22	60	206	98
NCCTF	245	404	405	512	712	705	718	538
NCI	1,538	1,318	1,191	1,129	214	247	73	300
OCF	45	38	27	25	14	28	21	19
OCI	0	2	484	683	0	4	89	111
OSP	1	1	0	23	411	177	42	51
OSP CAMP	0	0	0	0	62	310	280	283
PCI	1,921	1,747	1,523	1,497	525	915	1,179	873
PCI CAMP	0	38	51	7	0	0	0	0
RCI	810	616	304	432	34	26	23	10
RCI CAMP	23	76	211	103	0	0	0	0
RICI	0	15	16	12	1,235	1,135	1,001	1040
RICI CAMP	0	0	11	11	0	13	27	126
SCI	1,043	772	580	618	233	141	124	133
SOCF	16	22	24	63	24	45	64	16
TCI	14	6	4	0	741	435	257	152
TCI CAMP	0	0	0	38	86	322	411	536
TOCI	280	291	167	83	28	6	84	0
TOCI CAMP	0	23	106	0	0	8	66	0
WCI	89	184	95	77	2	6	4	16
CAMP REAMS	63	14	233	154	20	140	132	158
<b>TOTAL</b>	<b>12,337</b>	<b>10,901</b>	<b>10,600</b>	<b>9,752</b>	<b>9,844</b>	<b>9,328</b>	<b>9,353</b>	<b>8,756</b>

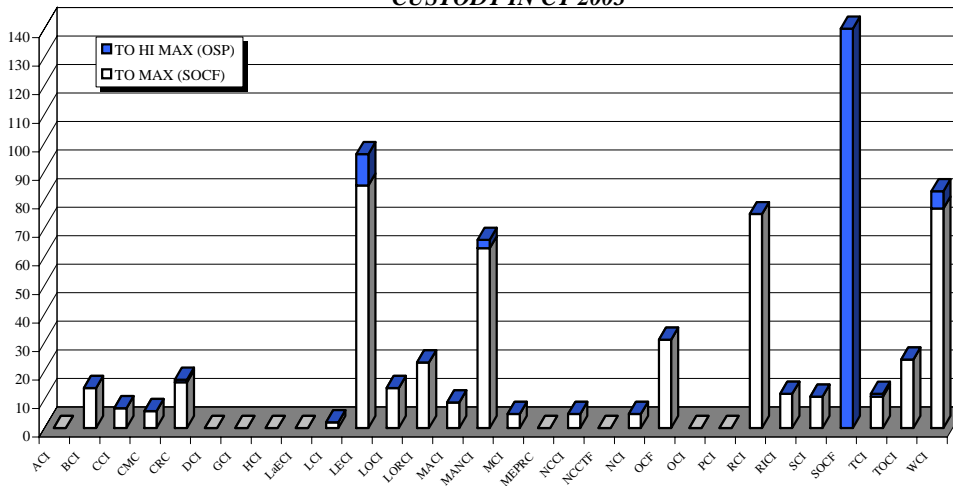
**FIGURE 3. INMATES RECEIVED FROM CRC AND LORCI CY 2003**



**DISCIPLINARY AND ADMINISTRATIVE TRANSFERS**

	FROM LESSER CUSTODY TO:				FROM HIGHER TO LESSER CUSTODY			
	HI MAX (LEVEL 5) (OSP)		MAXIMUM (LEVEL 4) (SOCF)		HI MAX (LEVEL 5) (OSP)		MAXIMUM (LEVEL 4) (SOCF)	
	2003	2002	2003	2002	2003	2002	2003	2002
ACI	0	0	0	9	0	0	9	2
BCI	0	0	14	23	0	0	0	13
CCI	0	0	7	11	2	0	6	1
CMC	0	0	6	0	2	0	6	2
CRC	1	2	16	22	0	0	0	9
DCI	0	0	0	0	0	0	0	0
GCI	0	0	0	5	0	0	0	1
HCI	0	0	0	0	0	0	0	0
LaECI	0	0	0	0	0	0	0	1
LCI	0	0	2	6	18	0	171	0
LECI	11	5	85	55	0	4	4	59
LOCI	0	0	14	8	0	0	0	0
LORCI	0	0	23	54	0	0	2	9
MACI	0	0	9	21	13	0	90	3
MANCI	3	2	63	71	0	2	1	68
MCI	0	0	5	14	0	0	0	1
MEPRC	0	0	0	0	0	0	2	0
NCCI	0	0	5	8	0	0	0	2
NCCTF	0	0	0	0	0	0	3	0
NCI	0	0	5	6	0	0	31	1
OCF	0	0	31	25	0	0	0	19
OCI	0	0	0	6	0	0	0	1
PCI	0	0	0	15	1	0	18	1
RCI	0	0	75	47	5	0	136	171
RICI	0	1	12	23	2	0	1	6
SCI	0	0	11	13	0	0	1	2
SOCF	140	84	0	0	69	115	0	0
TCI	1	0	11	13	4	0	61	50
TOCI	0	2	24	14	2	1	35	36
WCI	6	1	77	45	12	0	102	66
<b>TOTAL</b>	<b>162</b>	<b>97</b>	<b>495</b>	<b>514</b>	<b>130</b>	<b>122</b>	<b>679</b>	<b>524</b>

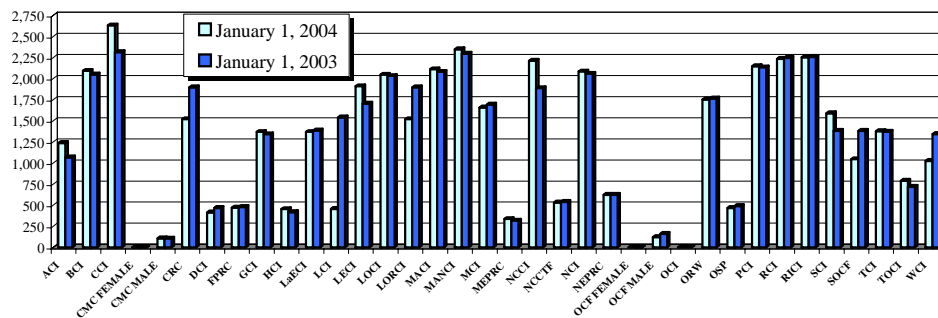
**FIGURE 4. TRANSFERS TO HIGH MAX (LEVEL 5) AND MAXIMUM (LEVEL 4) CUSTODY IN CY 2003**



**END OF CALENDAR YEAR INSTITUTIONAL POPULATION COUNT:**

<b>INSTITUTION POPULATION TREND (PREVIOUS YEAR COMPARISON)</b>		<b>1/1/2004</b>	<b>1/1/2003</b>	<b>DIFFERENCE</b>	
ACI	(Allen Correctional Institution)	1,239	1,067	172	16.1%
BCI	(Belmont Correctional Institution)	2,094	2,051	43	2.1%
CCI	(Chillicothe Correctional Institution)	2,633	2,315	318	13.7%
CMC MALE	(Correctional Medical Center)	108	106	2	1.9%
CRC	(Correctional Reception Center)	1,521	1,900	-379	-19.9%
DCI	(Dayton Correctional Institution)	415	468	-53	-11.3%
GCI	(Grafton Correctional Institution)	1,369	1,343	26	1.9%
HCI	(Hocking Correctional Institution)	455	418	37	8.9%
LaECI	(Lake Erie Correctional Institution)	1,369	1,387	-18	-1.3%
LCI	(Lima Correctional Institution)	458	1,543	-1,085	-70.3%
LECI	(Lebanon Correctional Institution)	1,912	1,706	206	12.1%
LOCI	(London Correctional Institution)	2,048	2,033	15	0.7%
LORCI	(Lorain Correctional Institution)	1,521	1,899	-378	-19.9%
MACI	(Madison Correctional Institution)	2,113	2,083	30	1.4%
MANCI	(Mansfield Correctional Institution)	2,349	2,297	52	2.3%
MCI	(Marion Correctional Institution)	1,659	1,694	-35	-2.1%
MEPRC	(Montgomery Education & Pre-Release Center)	337	318	19	6.0%
NCCI	(North Central Correctional Institution)	2,213	1,889	324	17.2%
NCCTF	(North Coast Correctional Treatment Facility)	532	540	-8	-1.5%
NCI	(Noble Correctional Institution)	2,086	2,060	26	1.3%
OCF MALE	(Oakwood Correctional Facility)	123	161	-38	-23.6%
OSP	(Ohio State Penitentiary)	468	491	-23	-4.7%
PCI	(Pickaway Correctional Institution)	2,149	2,136	13	0.6%
RCI	(Ross Correctional Institution)	2,236	2,248	-12	-0.5%
RICI	(Richland Correctional Institution)	2,254	2,258	-4	-0.2%
SCI	(Southeastern Correctional Institution)	1,590	1,383	207	15.0%
SOCF	(Southern Ohio Correctional Facility)	1,047	1,382	-335	-24.2%
TCI	(Trumbull Correctional Institution)	1,380	1,371	9	0.7%
TOCI	(Toledo Correctional Institution)	791	779	12	1.5%
WCI	(Warren Correctional Institution)	1,025	1,075	-50	-4.7%
<b>MALE TOTAL</b>		<b>41,494</b>	<b>42,401</b>	<b>-907</b>	<b>-2.1%</b>
CMC FEMALE	(Correctional Medical Center)	4	6	-2	-33.3%
FPRC	(Franklin Pre-Release Center)	473	479	-6	-1.3%
NEPRC	(Northeast Pre-Release Center)	623	625	-2	-0.3%
OCF FEMALE	(Oakwood Correctional Facility)	2	6	-4	-66.7%
ORW	(Ohio Reformatory for Women)	1,754	1,767	-13	-0.7%
<b>FEMALE TOTAL</b>		<b>2,856</b>	<b>2,883</b>	<b>-27</b>	<b>-0.9%</b>
<b>COMBINED MALE / FEMALE TOTAL</b>		<b>44,350</b>	<b>45,284</b>	<b>-934</b>	<b>-2.1%</b>

**FIGURE 5. COMPARISON OF INSTITUTION POPULATION COUNT ON 1/1/04 and 1/1/03**



**RELEASES AND RETURNS:**

<b>INSTITUTIONAL STATISTICS</b>					
	<b>CY 2003 FEMALE</b>	<b>CY 2003 MALE</b>	<b>CY 2003 TOTAL</b>	<b>CY 2002 TOTAL</b>	<b>CY 2001 TOTAL</b>
<b>RELEASED BY:</b>					
SUSPENDED SENTENCE	2	32	34	40	130
VACATED SENTENCE	1	4	5	15	22
REGULAR PAROLE	185	4,779	4,964	4,610	5,397
SHOCK PAROLE	1	1	2	6	15
JUDICIAL RELEASE	395	1,290	1,685	1,597	1,634
POST RELEASE CONTROL	692	7,845	8,537	9,057	8,755
TRANSITIONAL CONTROL	203	1,269	1,472	1,233	1,318
EXPIRATION OF SENTENCE	19	715	734	1,100	1,320
END OF STATED TERM	1,382	8,772	10,154	7,992	7,214
APPEALS BOND	7	18	25	33	37
ESCAPES (numbers provided by the Office of Prisons)	0	3	3	1	3
DEATHS (numbers provided by the Bureau of Medical Services)	5	101	106	117	119
<b>TOTAL RELEASED</b>	<b>2,892</b>	<b>24,829</b>	<b>27,721</b>	<b>25,801</b>	<b>25,964</b>

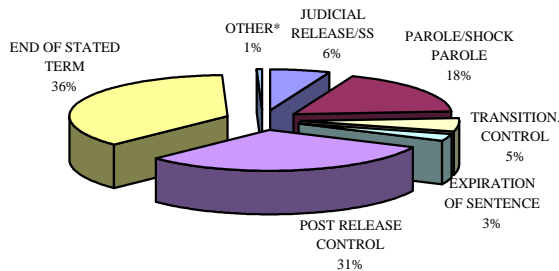
<b>RETURNED BY:</b>					
PAROLE VIOLATION (TECH.) <sup>1</sup>	24	906	930	1,058	1,146
JUDICIAL RELEASE VIOLATION	98	682	780	620	597
POST RELEASE CONTROL VIOLATION <sup>1</sup>	56	1,578	1,634	1,518	2,187
TRANSITIONAL CONTROL VIOLATION	30	165	195	128	202
REACTIVATED SUSPENDED SENTENCE	1	19	20	72	111
ESCAPES RETURNED (numbers provided by the Office of Prisons)	0	3	3	4	3
APPEALS BOND	2	13	15	10	17
<b>TOTAL RETURNED</b>	<b>211</b>	<b>3,366</b>	<b>3,577</b>	<b>3,410</b>	<b>4,263</b>

<sup>1</sup> Numbers taken from DOTS. PRC and Parole offenders being held at reception prior to a violation hearing have caused errors in the monthly report totals, so they are not summed for this report.

<b>PAROLE VIOLATORS RECOMMISSIONED<sup>2</sup></b>	14	681	695
<b>PRC FELONY VIOLATOR<sup>2</sup></b>	60	1,192	1,252

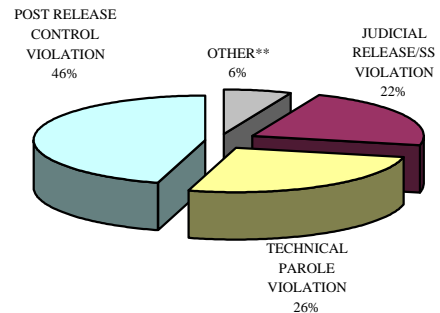
<sup>2</sup> PVR and PRC Felony Violator numbers from DOTS.

**FIGURE 6. RELEASE TYPES CY 2003**



\*Other includes the following releases: vacated sentences, appeals bond, escapes and deaths.

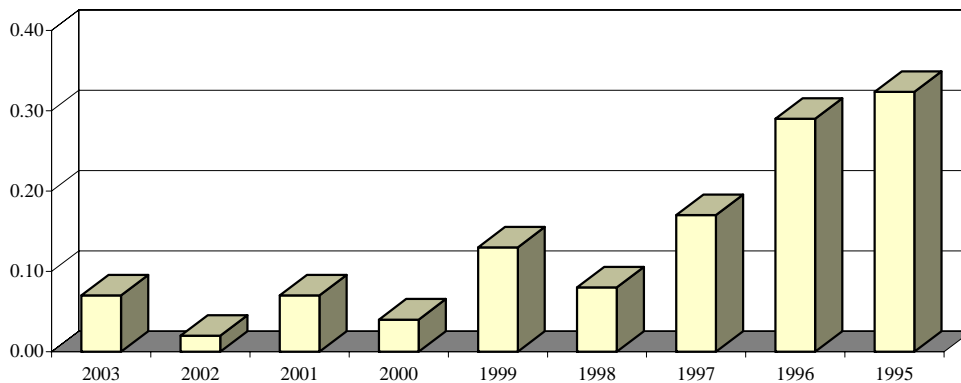
**FIGURE 7. RETURN TYPES CY 2003**



\*\*Other includes returns for the following: transitional control violation, return from appeals bond and captured escapees.

**ESCAPES AND RATES OF ESCAPE**

	2003	2002	2001	2000	1999	1998	1997	1996	1995
ACI	0	0	0	0	0	0	0	0	0
BCI	0	0	0	0	0	0	0	1	0
CCI	0	0	0	0	2	0	0	0	0
CMC	0	0	0	0	0	0	0	0	0
CRC	0	0	0	0	0	0	0	0	0
DCI	0	0	0	0	0	0	0	0	0
FPRC	0	0	0	0	0	0	0	0	0
GCI	0	0	1	0	0	1	0	2	0
HCI	0	0	0	0	0	0	0	0	0
LAECI	0	0	0	0	0	0	0	0	0
LCI	0	0	0	0	0	0	0	0	0
LECI	0	0	1	0	0	0	0	0	0
LOCI	0	0	0	2	0	0	2	0	2
LORCI	0	0	0	0	0	0	0	0	0
MACI	0	0	0	0	1	0	0	1	2
MANCI	0	0	0	0	1	0	2	3	3
MCI	0	0	0	0	0	0	2	0	1
MEPRC	0	0	0	0	0	0	0	0	1
NEPRC	0	0	0	0	0	0	0	0	0
NCCI	0	0	0	0	0	0	0	1	0
NCCTF	0	0	0	0	0	0	0	0	0
NCI	0	0	0	0	0	0	0	0	0
OCF	0	0	0	0	0	0	0	0	0
OCI	0	0	0	0	0	0	0	0	0
ORW	0	0	0	0	0	0	0	0	0
OSP	0	0	0	0	0	0	0	0	0
PCI	1	0	0	0	1	1	1	2	1
RCI	1	0	0	0	0	1	0	1	2
RICI	0	0	0	0	0	0	0	0	0
SCI	1	1	1	0	1	1	1	1	0
SOCF	0	0	0	0	0	0	0	0	2
TCI	0	0	0	0	0	0	0	1	0
TOCI	0	0	0	0	0	0	0	0	0
WCI	0	0	0	0	0	0	0	0	0
<b>TOTAL</b>	<b>3</b>	<b>1</b>	<b>3</b>	<b>2</b>	<b>6</b>	<b>4</b>	<b>8</b>	<b>13</b>	<b>14</b>
<b>AVG. SYSTEM POPULATION FOR YEAR</b>	45,084	45,005	45,196	46,196	47,039	48,581	46,965	45,109	43,283
<b>RATE OF ESCAPE PER 1000 INMATES</b>	0.07	0.02	0.07	0.04	0.13	0.08	0.17	0.29	0.32

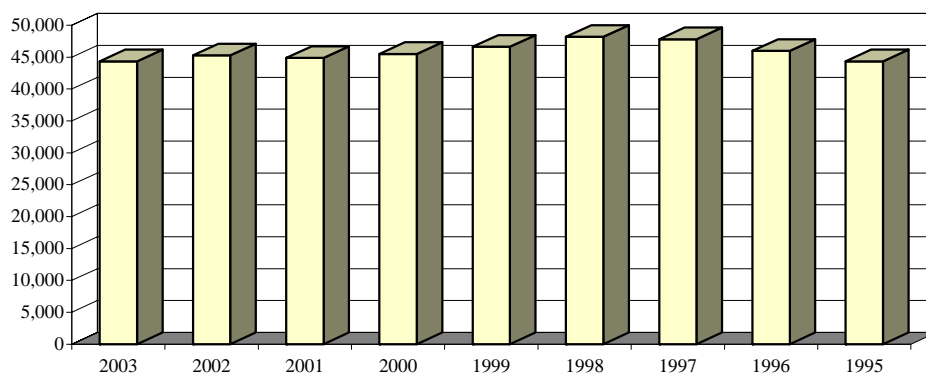


**FIGURE 8. RATES OF ESCAPE CY 2003-1995**

**INSTITUTION POPULATION TRENDS:**

<b>END OF THE YEAR INSTITUTIONAL POPULATION TREND FOR 12/31/03 THROUGH 12/31/95</b>									
	<b>2003</b>	<b>2002</b>	<b>2001</b>	<b>2000</b>	<b>1999</b>	<b>1998</b>	<b>1997</b>	<b>1996</b>	<b>1995</b>
ACI	1,239	1,067	1,122	1,175	1,406	1,397	1,381	1,336	1,415
BCI	2,094	2,051	2,017	1,981	2,427	2,533	2,433	2,283	1,891
CCI	2,633	2,315	2,187	2,192	2,244	2,731	2,714	2,580	2,621
CMC MALE	108	106	99	101	151	140	150	149	154
CMC FEMALE	4	6	4	2	2	4	4	6	4
CRC	1,521	1,900	1,513	1,777	1,840	1,982	2,267	1,971	2,074
DCI	415	468	456	445	460	467	489	485	484
FPRC	473	479	436	394	407	453	475	489	500
GCI	1,369	1,343	1,354	1,358	1,601	1,587	1,658	1,622	1,590
HCI/HCF	455	418	400	396	438	441	446	432	436
LaECI	1,369	1,387	1,382	1,369	0	0	0	0	0
LCI	458	1,543	1,467	1,500	1,530	1,907	2,009	2,082	2,110
LECI	1,912	1,706	1,666	1,778	1,976	2,221	2,273	2,105	2,198
LOCI	2,048	2,033	2,057	1,947	1,885	1,901	1,877	1,896	2,366
LORCI	1,521	1,899	1,467	1,568	1,606	2,053	2,062	2,003	1,863
MACI	2,113	2,083	1,899	2,060	2,290	2,613	2,545	2,530	2,311
MANCI	2,349	2,297	2,308	2,286	2,469	2,637	2,669	2,598	2,637
MCI	1,659	1,694	1,763	1,803	1,918	2,206	2,111	2,109	2,093
MEPRC	337	318	292	305	306	340	347	324	349
NCCI	2,213	1,889	1,916	1,938	2,258	2,314	2,316	2,216	2,274
NCCTF	532	540	542	549	0	0	0	0	0
NCI	2,086	2,060	1,763	1,832	1,854	2,344	2,377	1,452	0
NEPRC	623	625	606	569	546	592	643	633	645
OCF MALE	123	161	175	144	158	173	168	162	229
OCF FEMALE	2	6	10	4	6	7	7	9	0
OCI	0	0	1,636	1,908	1,917	2,000	2,039	2,139	2,245
ORW FEMALE	1,754	1,767	1,696	1,774	1,845	1,830	1,682	1,642	1,594
ORW MALE	0	0	0	0	0	0	0	0	0
OSP	468	491	512	593	643	492	0	0	0
PCI	2,149	2,136	1,834	1,785	1,883	1,940	1,920	1,919	1,923
RCI	2,236	2,248	2,202	2,289	2,398	2,805	2,797	2,767	2,618
RICI	2,254	2,258	2,016	2,073	2,267	102	0	0	0
SCI	1,590	1,383	1,352	1,368	1,679	1,726	1,742	1,819	1,751
SOCF	1,047	1,382	1,449	1,435	1,456	1,425	1,425	1,304	1,076
TCI	1,380	1,371	1,408	1,327	1,409	1,447	1,446	1,424	1,375
TOCI	791	779	718	222	0	0	0	0	0
WCI	1,025	1,075	1,144	1,258	1,344	1,361	1,336	1,476	1,512
<b>TOTAL</b>	<b>44,350</b>	<b>45,284</b>	<b>44,868</b>	<b>45,505</b>	<b>46,619</b>	<b>48,171</b>	<b>47,808</b>	<b>45,962</b>	<b>44,338</b>

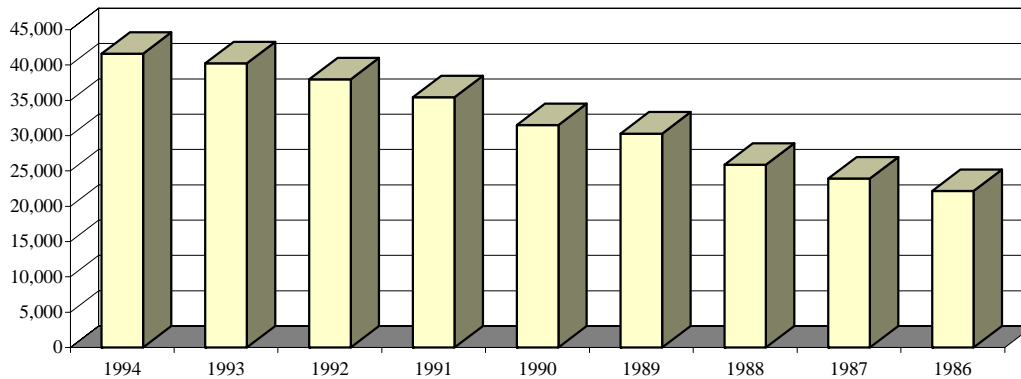
**FIGURE 9. INSTITUTION POPULATION TREND CY 2003-1995**





**END OF THE YEAR INSTITUTIONAL POPULATION TREND FOR 12/31/94 THROUGH 12/31/86**

	1994	1993	1992	1991	1990	1989	1988	1987	1986
ACI	1,481	1,355	1,105	1,007	975	885	712	635	0
BCI	224	0	0	0	0	0	0	0	0
CCI	2,780	2,821	2,802	2,634	2,460	2,217	1,976	1,886	2,924
CLEV. P.R.	0	0	0	0	0	0	0	43	0
CMC MALE	150	139	0	0	0	0	0	0	0
CMC FEMALE	6	7	0	0	0	0	0	0	0
CRC	2,204	2,318	2,207	2,223	1,423	1,540	1,333	873	0
DCI	478	484	485	481	454	469	473	435	0
EDP	0	0	0	0	343	385	193	0	0
FPRC	435	429	364	354	1,012	925	167	0	0
GCI	1,596	1,435	1,289	1,161	0	0	0	0	0
HCI/HCF	417	446	395	392	396	321	327	319	325
LCI	2,051	1,954	1,902	1,909	1,848	1,726	1,719	1,546	1,732
LECI	2,139	2,196	2,188	1,939	1,948	1,935	1,861	1,871	2,223
LOCI	2,335	2,400	2,394	2,447	1,484	0	0	0	0
LORCI	2,327	2,329	2,175	1,905	2,250	2,173	1,829	1,987	2,246
MACI	2,315	2,312	2,069	1,942	1,696	1,697	1,360	820	0
MANCI	2,320	2,455	2,341	2,119	1,411	0	0	0	0
MCI	2,207	2,307	2,104	1,856	1,775	1,937	1,941	1,961	2,145
MEPRC	337	0	0	0	0	0	0	0	0
NCCI	724	0	0	0	0	0	0	0	0
NEPRC	613	659	611	491	340	413	173	0	0
OCF MALE	97	0	0	0	0	0	0	0	0
OCF FEMALE	0	0	0	0	0	0	0	0	0
OCI	2,340	2,280	2,257	2,266	2,135	2,053	1,709	1,578	2,141
ORW FEMALE	1,490	1,443	1,389	1,412	1,213	1,569	1,280	1,183	1,153
ORW MALE	209	249	0	0	0	0	0	0	0
OSR	0	0	0	0	0	2,131	2,188	2,317	2,697
PCI	1,942	1,942	1,912	1,792	1,536	1,518	1,265	1,575	1,017
RCI	2,813	2,892	2,646	2,372	2,222	1,920	1,584	1,305	0
SCI/SOTC	2,044	1,905	2,018	1,705	1,533	1,466	1,528	1,453	1,185
SOCF	1,060	1,093	1,831	1,637	1,829	2,133	2,101	2,156	2,387
TCI	973	948	83	0	0	0	0	0	0
WCI	1,502	1,455	1,424	1,402	1,218	887	142	0	0
<b>TOTAL</b>	<b>41,609</b>	<b>40,253</b>	<b>37,991</b>	<b>35,446</b>	<b>31,501</b>	<b>30,300</b>	<b>25,861</b>	<b>23,943</b>	<b>22,175</b>



**FIGURE 10. INSTITUTION POPULATION TREND 1994-1986**